

HERITAGE PLAQUE PROGRAM

TENTH ANNIVERSARY



ICE CREAM
FRUITS
CHOCOLATE

Maple Ridge Heritage Commission

Copyright © 2002 Maple Ridge Community Heritage Commission

National Library of Canada Cataloguing in Publication Data

ISBN 0-9683399-1-3

Editor: Jim Charlebois

Book and Cover Design: Leon Phillips

Maple Ridge Community Heritage Commission

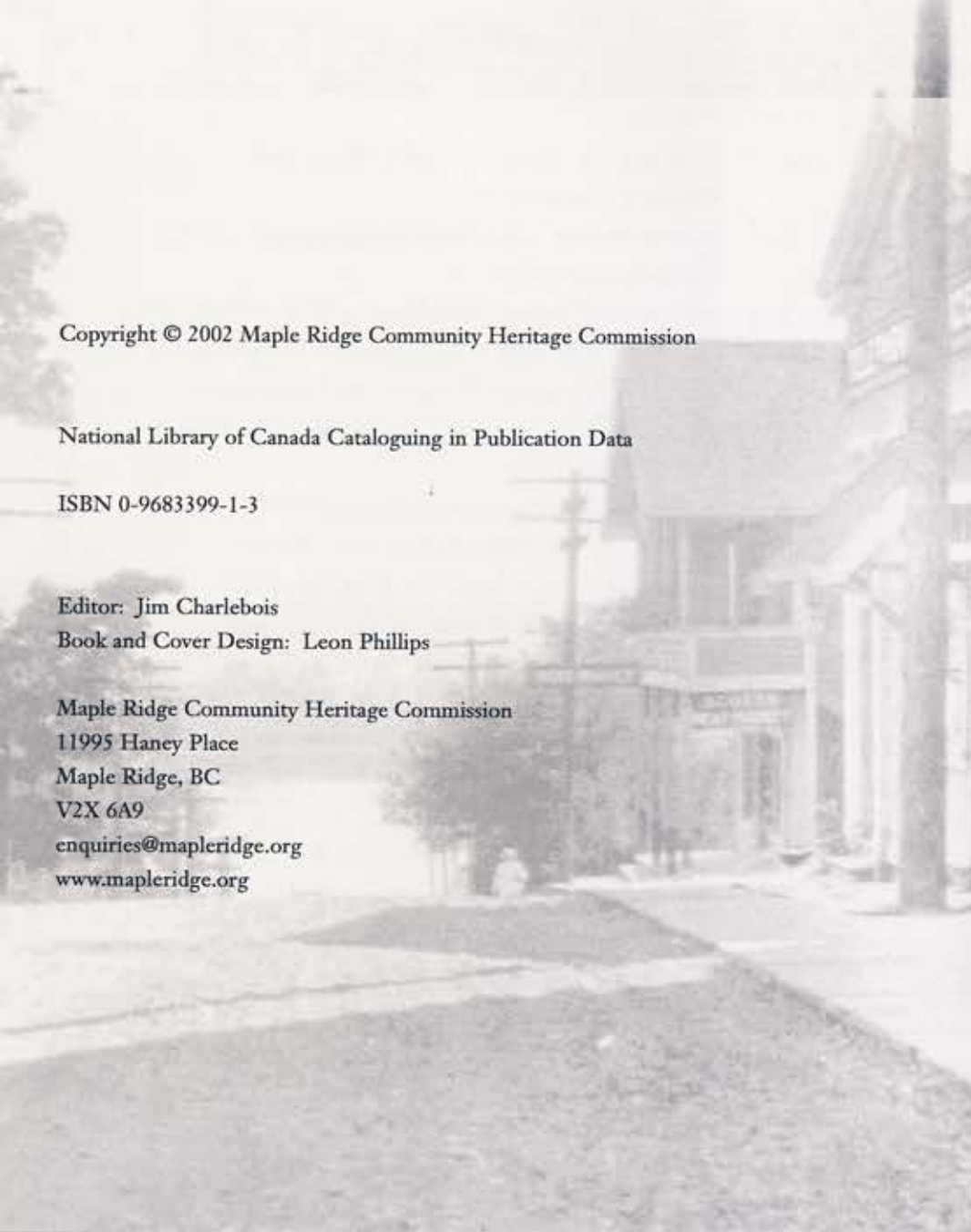
11995 Haney Place

Maple Ridge, BC

V2X 6A9

enquiries@mapleridge.org

www.mapleridge.org



HERITAGE PLAQUE PROGRAM
TENTH ANNIVERSARY



MacLean High School, Haney

MAPLE RIDGE
COMMUNITY
HERITAGE
COMMISSION



Centennial Pool Opening, 1958

Introduction	6
MacLean High School	8
St. Andrews Presbyterian Church	10
Haney Brick and Tile Company	12
Wharf Office	14
Port Haney Bank of Montreal	16
Prince David Lodge (Masonic Temple)	18
St. John the Divine Church	20
John Hammond House	22
Hammond Elementary School	24
Whonnock United Church	26
Maple Ridge Golf Course Tree	28
Abernethy and Lougheed Logging Company	30
Ruskin Elementary School	32
Spencer Farm Milk House	34
The Church of St. John the Evangelist	36
Smith Residence	38
Bank of Hamilton	40
Webster's Corners United Church	42
Webster's Corners Elementary School	44
Leslie Residence	46
Ruskin Community Hall	48
Byrnes Residence	50
Japanese Kindergarten	52
Whonnock General Store	54
Whonnock Post Office	56
Storey Green (Charleton General Store)	58
Acknowledgements	60
Historic Photographs List	62



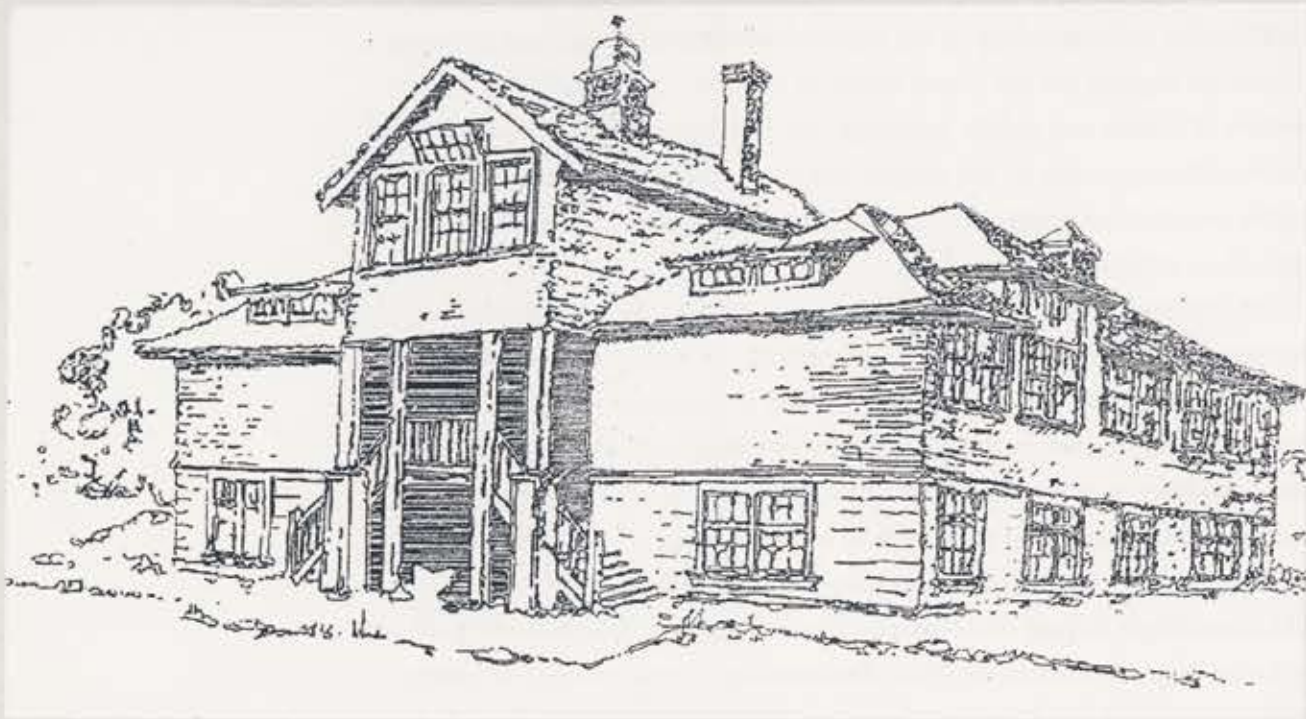
First Haney Hotel, c.1914

The Heritage Plaque Program was launched in 1992 in order to help build public understanding of the value of our built heritage, and to create a climate of support for the preservation of valuable older buildings. The owners of homes and public buildings that have received plaques have been universally supportive of the project and are proud to be included in our public recognition events. Residents of the local communities have also been pleased to attend the ceremonies.

The Program began with the selection of some of the most important heritage buildings in the District—notably St. John the Divine Church, the oldest church in the Province—and evolved to highlight buildings and sites that have contributed to the rich history of the municipality. In recent years, there has been a concerted effort to recognize buildings throughout the municipality, celebrating the diversity of the District's heritage resources.

On February 14, 1992, the first plaque was unveiled near the site of MacLean High School on Dewdney Trunk Road, the first secondary school to be built in the District in 1922. Remarkably, a good number of former students were on hand for the ceremony, sharing memories of their former school. Many of these same individuals were on hand for a rededication ceremony in September 2001, following the construction of the new municipal library. In the ten years the program has been underway, 25 plaques have been dedicated.

The Community Heritage Commission plans to continue the Heritage Plaque Program focusing on the diversity of buildings and sites in the various communities within Maple Ridge. The Commission would welcome suggestions for future plaque locations throughout the District.



MACLEAN HIGH SCHOOL

Dewdney Trunk Road

Original Plaque Date: February 14, 1992

Rededicated: September 12, 2001

The purpose of the Heritage Plaque program is to recognize significant heritage sites in the community. This is the former site of MacLean High School, the first high school in Maple Ridge.

Approved by Education Minister MacLean in 1922, MacLean High School served students in the Maple Ridge area from 1922 until 1954.

The original school consisted of two rooms and a lab. The school was added onto several times and was eventually converted to the Public Safety Building.





ST. ANDREWS PRESBYTERIAN CHURCH

22279-116 Avenue

Plaque Date: July 29, 1992



Built in 1888 on land donated by Thomas Haney. The frame structure was built with volunteer labour and faced with locally made brick. The first church service was held by Reverend A. Tait on March 20, 1889. In 1925, after union with the Methodist Church on River Road, it became St. Andrews United Church. A steeple was added to the structure to house the bell from the Maple Ridge Methodist Church.

The church was closed in 1956 when a new building was erected on Dewdney Trunk Road and was known as St. Andrews United Church. To preserve the building, the Maple Ridge Historical Society and B.C. Heritage Trust funded renovations of the building in 1983.

Referred to as St. Andrews Heritage Church, the building is owned by the District of Maple Ridge and cared for by the Maple Ridge Historical Society.





HANEY BRICK AND TILE COMPANY

22520-116th Avenue

Plaque Date: August 16, 1992

Owners E.G. Baynes and W. M. Horie opened the Port Haney Brick Company in 1907. Manager Harold Burnet and family lived in the house, built the same year.

The brick company grew and expanded, adding drain tile to its products and changing its name to the Haney Brick and Tile Company. The solid brick office building was put up as a showcase for the company's products in 1930.

After the closure of the brick company in 1977, the Baynes family donated two buildings and the surrounding land to the Municipality of Maple Ridge for recreational purposes. The Maple Ridge Museum opened in this building in 1984.





WHARF OFFICE
Foot of 224th Street

Plaque Date: September 12, 1992

This building was originally erected on 8th Avenue (224 Street) around 1926 as a real estate and insurance office. It also served as a bus shelter for a time. The building had to be moved when the land on which it was located was purchased for a new post office in the 1950's. The building was moved to the banks of the Fraser River where it served until the early 1980's as an office for the Beckstrom Towing Company which moved log booms and chip barges along the river.

The building was donated by Northview Enterprises and was restored through the efforts of the Heritage Advisory Committee of Municipal Council and the Historical Society with financial assistance from Municipal Council and the Heritage Trust of the Ministry of Municipal Affairs, Recreation and Culture.

The building illustrates the unique west coast early commercial style of the area with narrow profile drop siding, corner boards, and the "boomtown" false front.





PORT HANEY BANK OF MONTREAL

22355 River Road

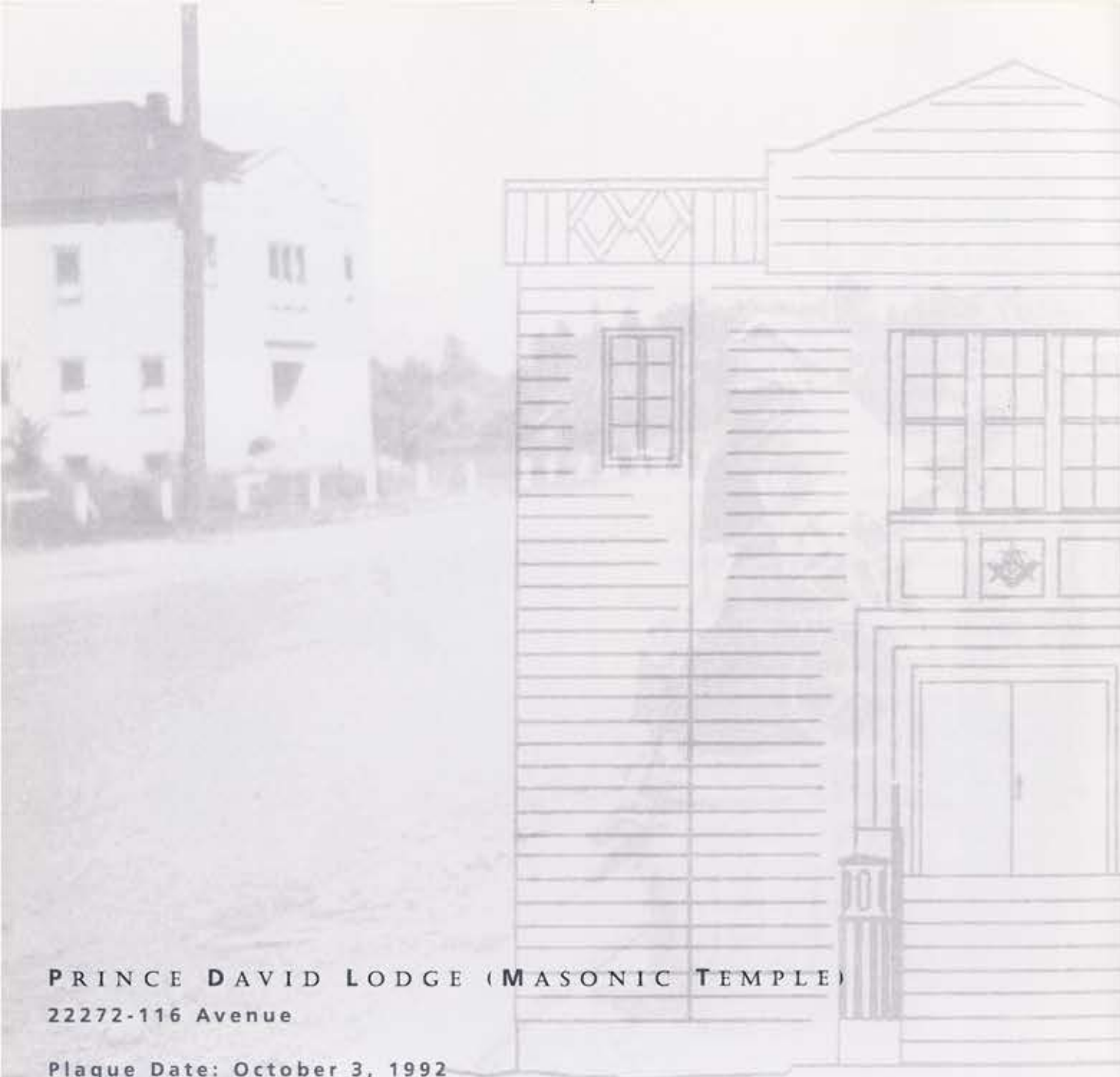
Plaque Date: October 1, 1992

This building was constructed as a Bank of Montreal in 1911 and opened October 1 of that year. The large two storey wood frame structure with its decorative parapet is a typical mainstreet commercial building. The bank manager and his family were housed on the spacious second floor.

This was the third Bank of Montreal built in British Columbia and it operated as such until Port Haney was razed by fire in 1932. The building was later used for multi-residential purposes including post World War II housing for veterans and their families awaiting new homes.

The building, having no cement foundation, had seriously deteriorated over the years until it was purchased by the Gehrings in 1973 and underwent a lengthy, labour intensive restoration by Don Gehring. With restoration complete, a sympathetic addition was built and the structure was opened as the Billy Miner Pub in May 1982.





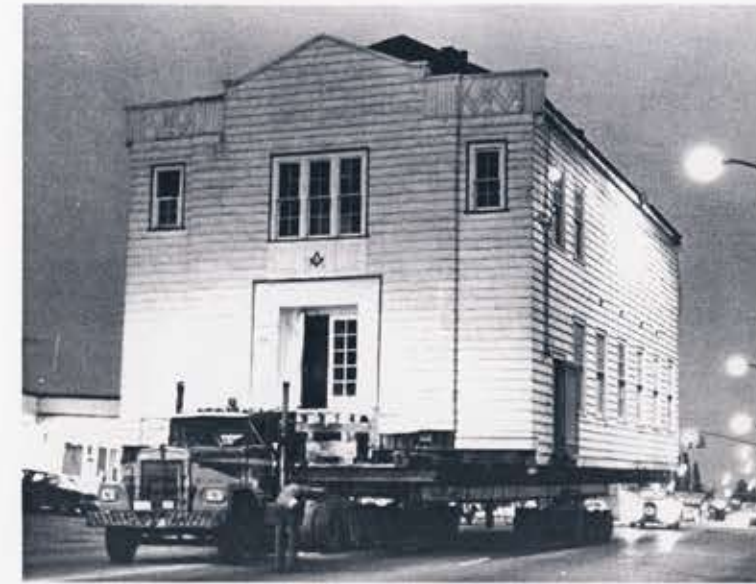
PRINCE DAVID LODGE (MASONIC TEMPLE)

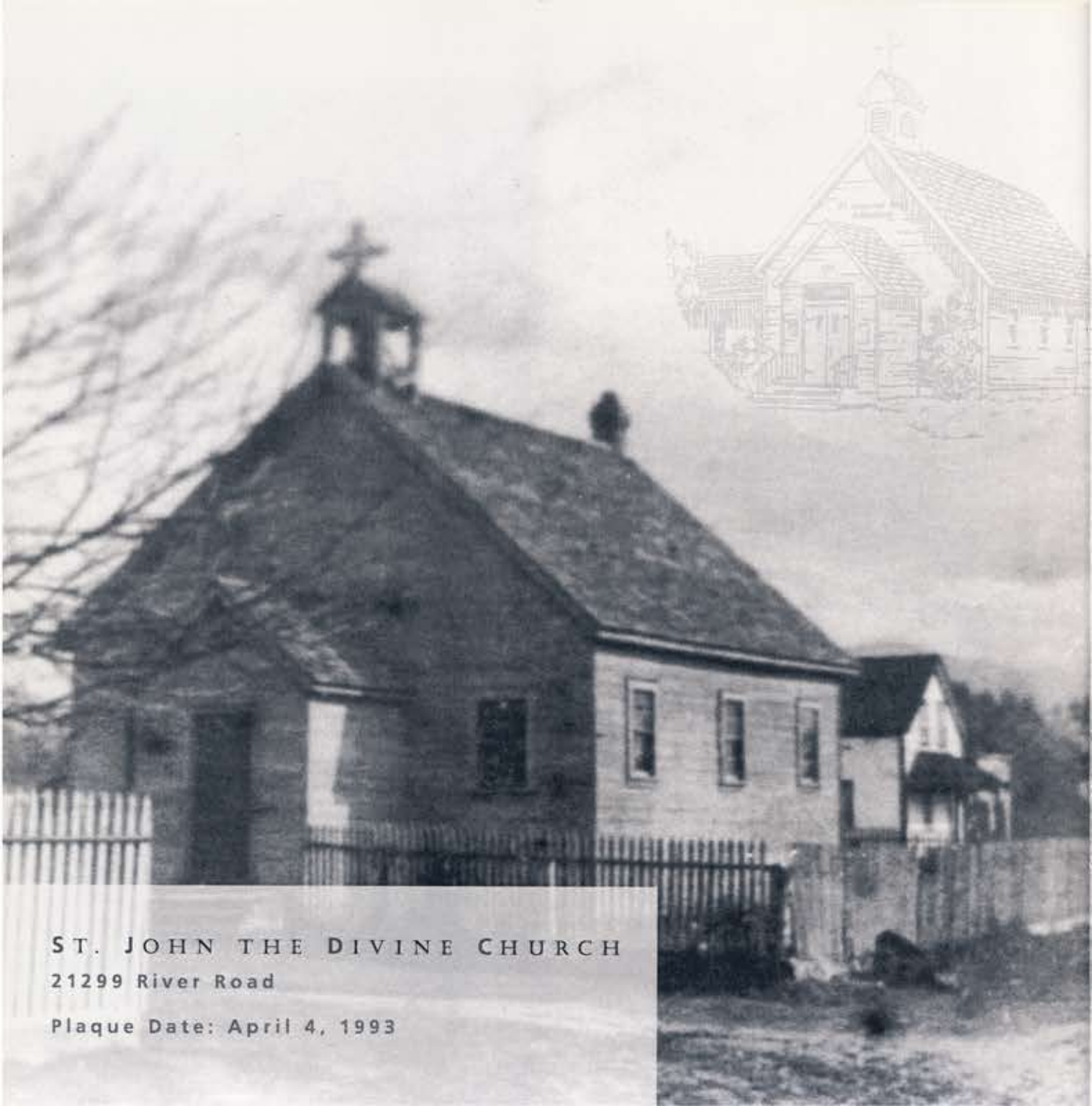
22272-116 Avenue

Plaque Date: October 3, 1992

Prince David Lodge, A.F. & A.M., No. 101 G.R.B.C. was organized in 1922 with Wor. Bro. R.W. Holland as master and 56 charter members. The lodge met in several places until this hall was built in 1931. The building was designed by architects McCarter & Nairne of Vancouver and erected by contractor Dugald Brown, a member of the Lodge.

It was originally located on the north side of the Lougheed Highway about one hundred yards east of the Haney Boulevard, 224th Street and was moved to its current site in 1980 to make way for development in central Haney. The Hall is used regularly by the Lodge, the Eastern Star, Demolay, Job's Daughters and several non-masonic organizations.





ST. JOHN THE DIVINE CHURCH

21299 River Road

Plaque Date: April 4, 1993

In 1859, St. John the Divine Church was built in Fort Langley by the Royal Engineers. With the coming of the C.P.R. the population in Maple Ridge began to increase and in response, the church was dismantled, floated across the Fraser River on a raft of its own timbers, hauled up the hill and reassembled on the corner of River Road and Laity Street in the fall of 1882. The first service at the new site was held December 20th, 1882.

In 1983, the church was moved a short distance to its present site further back on the same property by the Canadian Forces School of Military Engineering. There have been several additions to the structure since then.

St. John the Divine is the oldest surviving church in B.C.





JOHN HAMMOND HOUSE

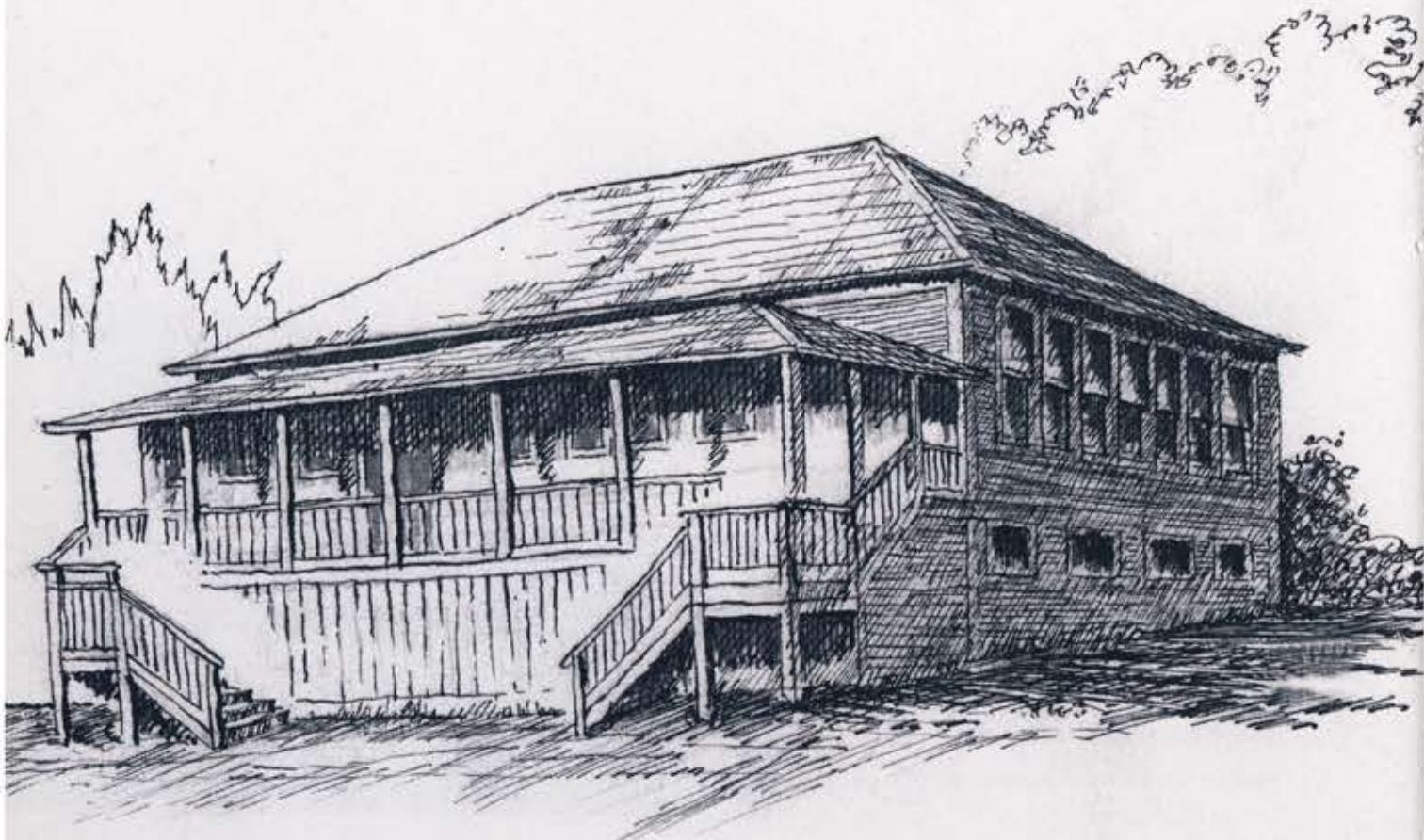
20541 Lorne Avenue

Plaque Date: August 15, 1993

Built in the late 19th century, the house was home to the John Hammond family. The Hammond brothers pioneered the area in 1872. With the arrival of the railway, they donated land for the town site that bears their name.

This building was built in the early colonial architectural style and retains the original tall narrow profile windows made of small pane glazing. The building displays the traditional heavy surrounds on the windows and doors, corner boards and narrow profile drop siding.





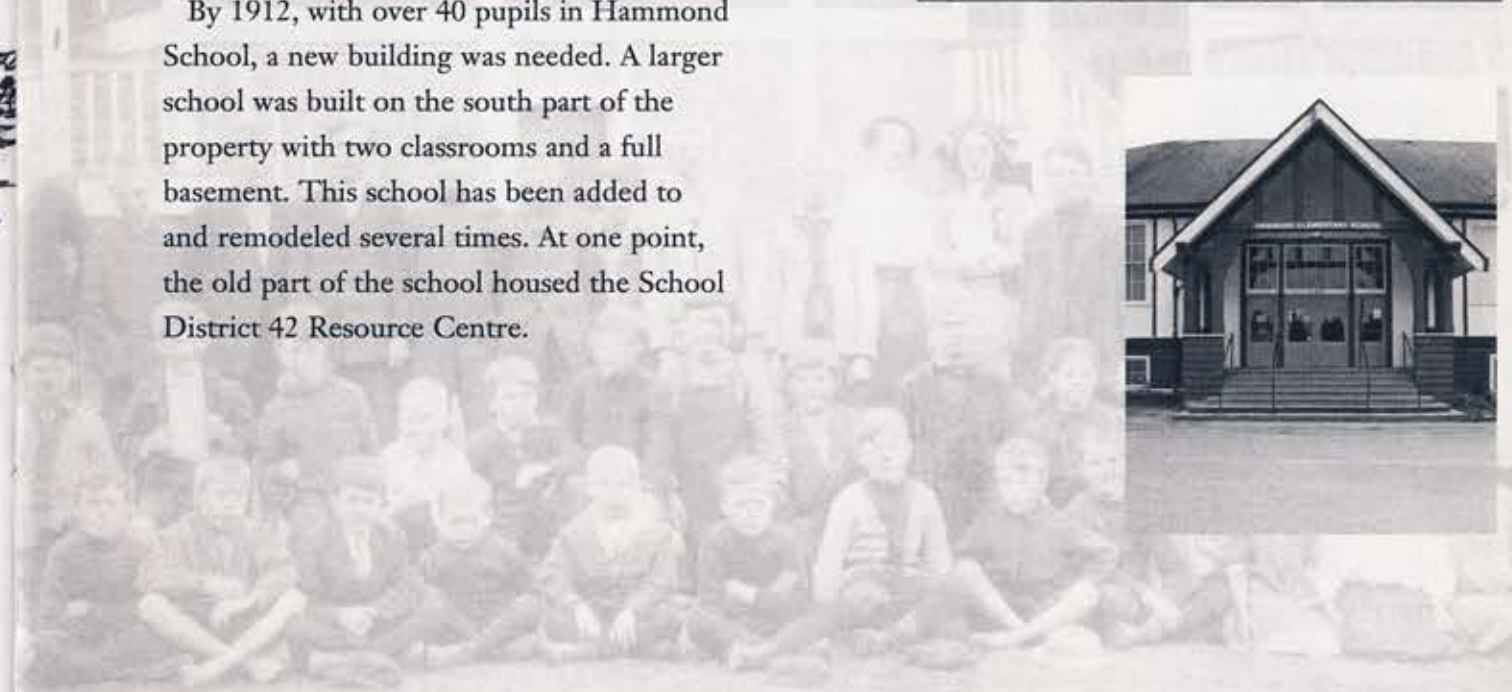
HAMMOND ELEMENTARY SCHOOL

11520-203rd Street

Plaque Date: September 23, 1993

The first public school in Port Hammond was built in 1898 on this site which was part of John Hammond's property. The three school trustees for Hammond School were J. Callaghan, Postmaster A.L. Lazenby and R.H. Sharpe.

By 1912, with over 40 pupils in Hammond School, a new building was needed. A larger school was built on the south part of the property with two classrooms and a full basement. This school has been added to and remodeled several times. At one point, the old part of the school housed the School District 42 Resource Centre.





WHONNOCK UNITED CHURCH

27091 River Road

Plaque Date: April 17, 1994

Built in 1914 on land donated by John Brodie, Mr. Robert A. Hamilton's plan was utilized for the church building. It was constructed by carpenter Olaus Lee who was assisted by voluntary labour.

The church was dedicated on the second Sabbath of September, 1914. The minister of the congregation was the Reverend George Fisher. Following the union of Presbyterian, Methodist and Congregational churches in 1925, Whonnock Presbyterian Church became the Whonnock United Church.

The church hall addition was built in 1933 and the belfry was attached to the church building roof.

This church building has been maintained by the faithful congregation and has been a house of worship from 1914 to the present time.





MAPLE RIDGE GOLF COURSE TREE

Plaque Date: 1994

This plaque commemorates the 120th anniversary of the incorporation of the Township of Maple Ridge.

The first Council meeting was held on this site beneath the maple trees after which the Township was named.

This maple tree was planted on September 12th, 1994 as a symbol of our roots and heritage.

As this tree grows...
so will our community and future generations.





ABERNETHY AND LOUGHEED LOGGING COMPANY

22350 Callaghan Avenue

Plaque Date: September 25, 1994

The site of Allco Park and the Alouette River Correctional Centre has a rich history.

During the 1920's "ALLCO" was the headquarters logging camp for the Abernethy and Lougheed Logging Company, the largest of its kind in the province. It was a modern operation employing up to seven hundred men with satellite camps at Mike Lake, Marion Lake and Alouette Lake. Although very successful it ceased operation in 1931.

Historically, timber was considered to be the most important resource to the community. Today the river has become the focal point.

This heritage plaque was dedicated on B.C. Rivers Day, September 25, 1994, recognizing the need for people to work together in partnership to preserve the river for future generations.

The plaque was provided by the District of Maple Ridge Heritage Advisory Committee in recognition of the heritage significance of the site.



RUSKIN ELEMENTARY SCHOOL

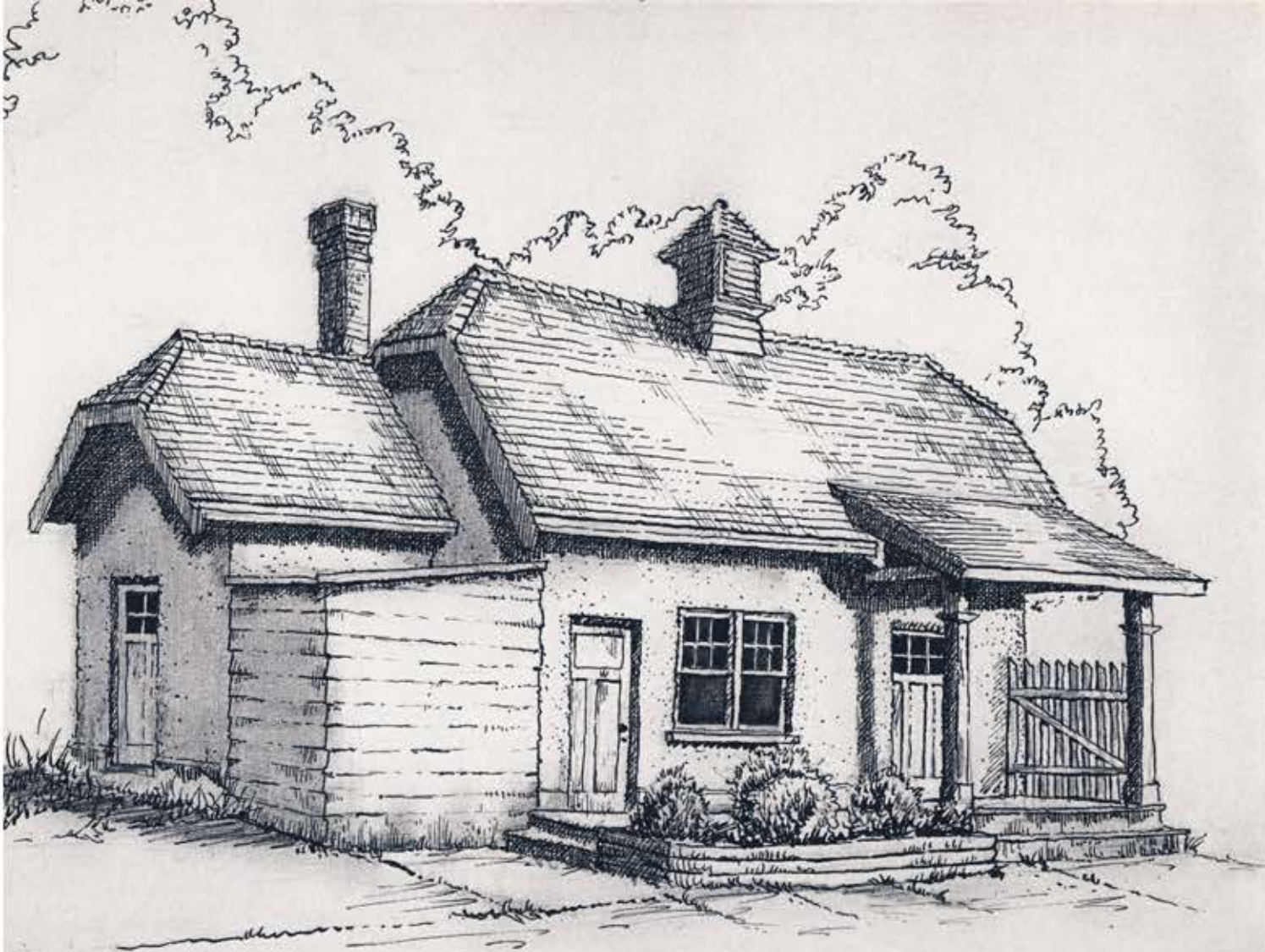
28348 96th Avenue

Plaque Date: May 18, 1995

The two room Ruskin School was built in 1916 to replace the original 1896 one room school. The two acre site on which the school stands was donated by property owner Charles Whettam. In the fall of 1919, Ruskin School became a superior school, taking students up to second year of high school.

Ruskin School is the only surviving school from this era in the Maple Ridge-Pitt Meadows School District.





SPENCER FARM MILK HOUSE
Maple Ridge Fair Grounds, 105th Avenue

Plaque Date: July 29, 1995

This milk house is the last remaining building on what was the David Spencer dairy farm of 400 acres which was purchased in 1919. The barns were built in 1922. Colonel Victor Spencer specialized in pure-bred Jersey cattle.

The annual agricultural fairs have been held on these grounds since 1959 with the Spencer barns used for animal displays. The old "red barn" was dismantled in 1974 and replaced with the dairy now used as the fair office.





THE CHURCH OF ST. JOHN THE EVANGELIST

27123 River Road

Plaque Date: August 27, 1995

The Anglican Parish of Whonnock, B.C. originated with the construction of the Church of St. Paul on land given by a Mr. Noble Oliver. The building was financed by an anonymous gift of \$800 and constructed by a Vancouver firm. Essential liturgical furnishings were donated and monthly services began with a Rev. Haddon of New Westminster. In 1921 a new church was built and the parish name was changed to that of St. John the Evangelist. The first church hall at St. John's was built and dedicated in the 1930's and was replaced with Cameron Hall in 1985. The parish has existed sometimes independently, sometimes in association with other parishes in Maple Ridge or Mission but, today, stands alone as an independent parish wholly supported by a small but faithful congregation.





SMITH RESIDENCE

11391-207th Street

Plaque Date: August 10, 1996

The land on which this house sits was originally owned by William Hammond. Early property owners included Elizabeth Lytte (1903 to 1913), Fannie Dale (1913 to 1919) and William Smith, who owned the property for forty years from 1919 to 1959. Mr. Smith built the Hammond Hotel. The house was built on the property in 1920.

The house has been nicely restored and is an excellent example of the conservation and practical use of a heritage home in the community.





BANK OF HAMILTON

20617 Maple Crescent

Plaque Date: August 10, 1996

The first bank in Maple Ridge was the Bank of Hamilton which opened in Port Hammond in 1908. A fire in 1916 destroyed the bank and other buildings in the area. The bank operated temporarily in a private home until this building was constructed in 1917.

In 1924 the Bank of Hamilton amalgamated with the Bank of Commerce and operated until 1934 when it closed as a result of the Depression. The Bank of Montreal took over the building and operated from 1934 to 1935. From 1935 to 1948 the building was used as a private residence. The Bank of Montreal re-opened in 1948 and operated until 1992. The building was adapted for use as a shop and today makes a unique contribution to the village atmosphere in Hammond.





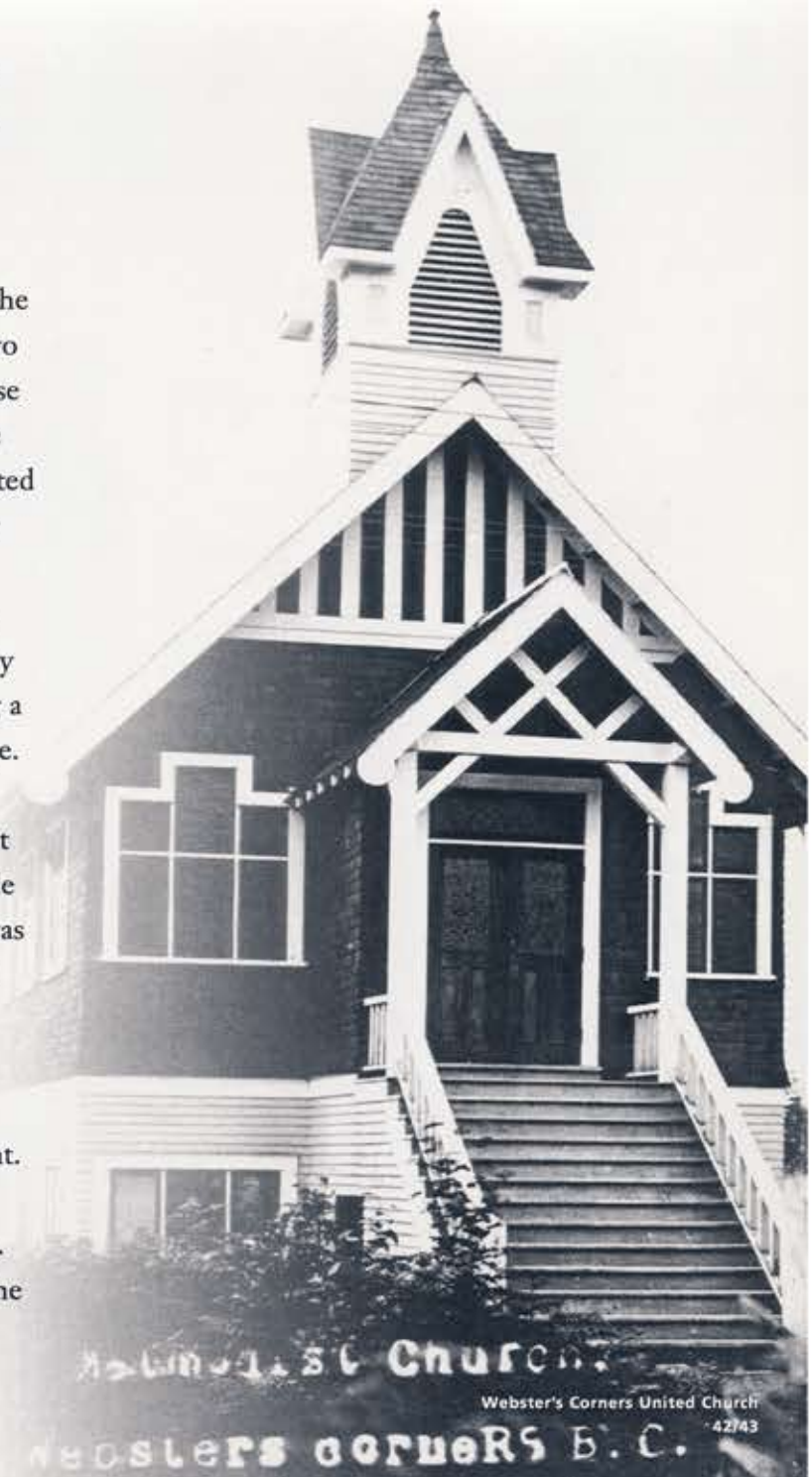
WEBSTER'S CORNERS UNITED CHURCH

25102 Dewdney Trunk Road

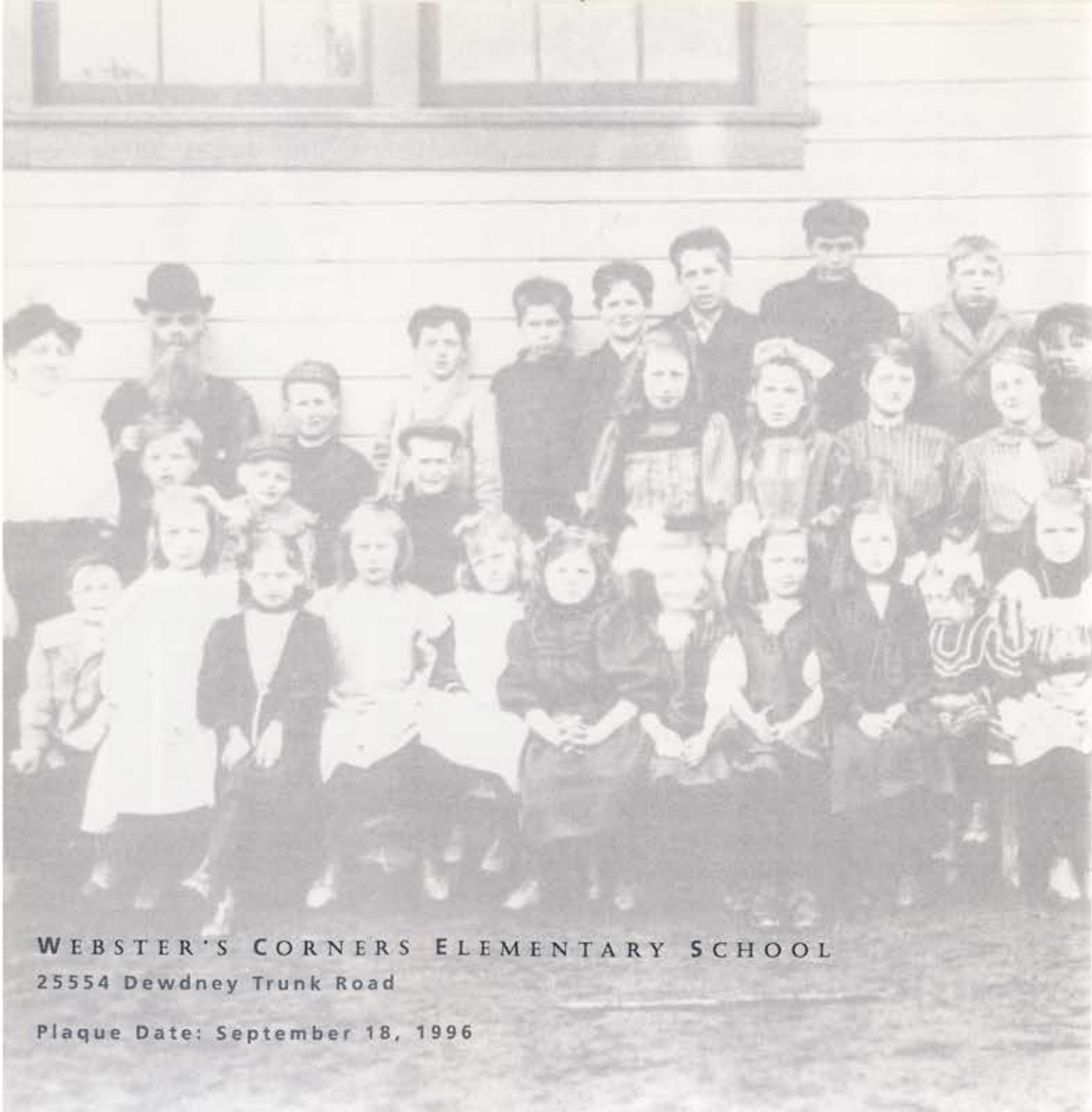
Plaque Date: September 15, 1996

The church was built by the Methodists in 1912 on land donated by Mr. Biggs. When the building was two thirds finished the Methodists were advised that the church would need to be moved because the land survey had mistakenly included 33 feet of the property of a neighbouring banker. The two Ansell families contributed \$200 to purchase the extra land and building continued. The church was built almost entirely with donated labour and materials. The only paid labour was one carpenter from Haney.

Reverend D. Scott was the first minister. The church also functioned as a community facility for banquets and concerts by fitting a platform over the alter steps to form a stage. In the 1920's the church was raised and a basement was added. By 1925 the basement was still not finished and winter drafts made the floor very cold. A Ladies Aid Society was formed to raise funds to finish and insulate the basement. The work was finally completed in 1926 and the ladies of the congregation were so excited they held a grand supper in the still dirt-floor basement. Church union led to the name change to Webster's Corners United Church in 1926. Eighty-five years after it was constructed the Church still holds services for a small but dedicated congregation.



Methodist Church
Webster's Corners United Church
42/43
Webster's Corners B.C.



WEBSTER'S CORNERS ELEMENTARY SCHOOL

25554 Dewdney Trunk Road

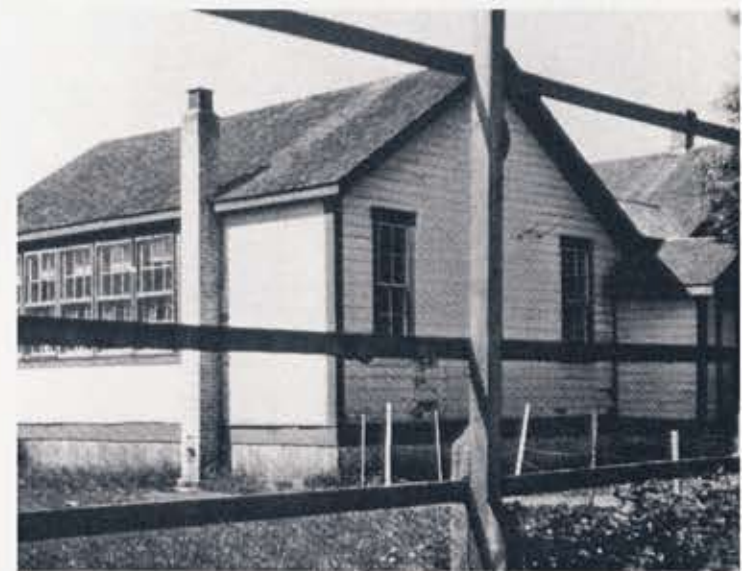
Plaque Date: September 18, 1996

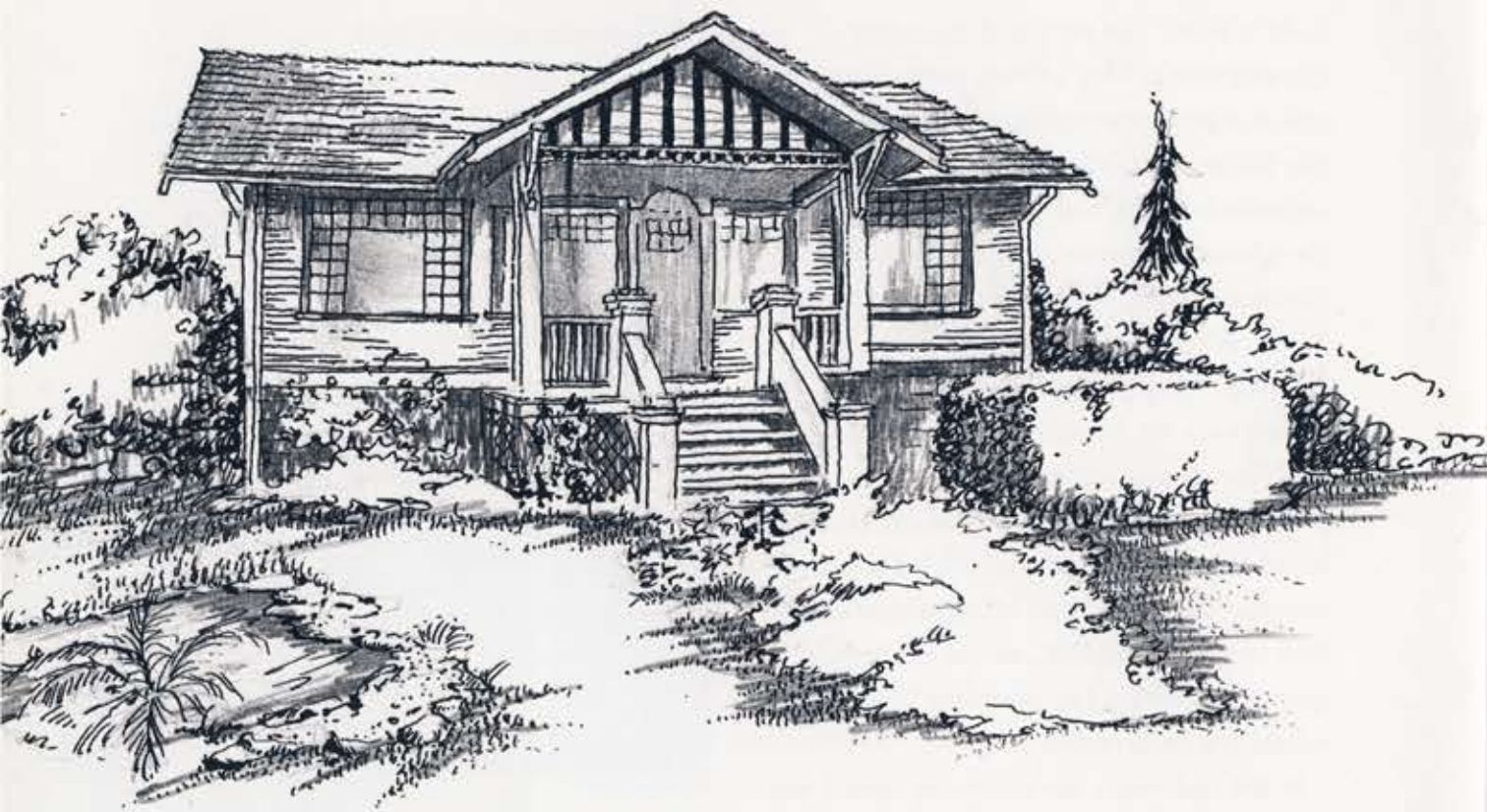
The first school in Webster's Corners was built in 1896. The people of Webster's Corners met in May 1896 to elect trustees and to plan for the building of the school. Mr. Webster was elected chairman and individuals by the names of Alexander, Carr, Creighton, Dockstader, Lockwood, Martin, Mighton, Smith, Storey, Sword, Thompson, Ward, Wilcox and Wilson were also involved. They pledged from one to five dollars each for the school and by January 1897 the total contribution was \$55.00. A stove and pipes, a woodshed and two cords of wood were also contributed. The Trustees accepted Ebner Knight's offer for one acre of land located at the N.E. corner of the N.E. quarter of Section 14, Township 12 and the school was built on this site.

In the early years the one-room school was often closed due to lack of enrollment until the arrival of the Finnish settlers and their children in 1905. The school was replaced by a larger one in 1908 and the District Board offered the original building to the residents. J.M. Webster moved it across the street and

added it to the post office. An addition was built onto the school in 1921.

The third school was built in 1929 and soon became a focus for the local community. In 1996 Webster's Corners Elementary School celebrated its 100th Anniversary in the fourth and newly built school.





LESLIE RESIDENCE

21695 River Road

Plaque Date: July 19, 1997

This Craftsman style home was built between 1923 and 1924 by Mr. Bill White for the owners, Mr. and Mrs. Earl Leslie and their five children. Mr. Leslie passed away in 1930. When Mrs. Leslie passed away in 1932 the property was acquired by Mr. Tom Little who lived in the home until his death in 1946 or 1947.

The home still has many of its original interior and exterior features including clapboard siding, doors, glass, plaster walls, wood flooring, moulding, and plate rails and has been carefully restored by the current owners.

The Council of the District of Maple Ridge designated the home as a protected heritage property on May 27, 1997.





RUSKIN COMMUNITY HALL

28395-96th Avenue

Plaque Date: July 12, 1998

Ruskin Community Hall was built in 1923 after the first community hall burned down in 1922. The first hall was the old Ruskin schoolhouse which was pulled across the road to this site. Mr. Albert Miller prepared the plans for the new hall. The Abernethy and Lougheed Logging Company donated the hemlock lumber which was delivered to the wharf at Ruskin and hauled up the hill to the site. The Stoltz Manufacturing Company donated the roof and shingle material. Many volunteers and local residents participated in the building work. Today the Hall is still an important local meeting place for the Ruskin community.





BYRNES RESIDENCE

28395-96th Avenue

Plaque Date: February 20, 1999

This is one of two neighbouring homes that were constructed as speculative rental houses in 1931 and 1932 by contractors Ralph Daniels, Ray Steves and Richard Whiting, for Mrs. Winnifred Gordon. This home was used for rental purposes until Mr. and Mrs. Brian Byrnes purchased and moved into it in 1946. The Byrnes family later purchased the neighbouring house in the 1960's, and it continues to be used for guest and family accommodation.

These homes are situated on two lots in historic Whonnock Centre and are surrounded by mature shrubs, trees and rhododendrons, and an extensively landscaped yard, which provide an excellent setting for these heritage dwellings. While these homes have the appearance of sharing one common site, they were built and remain on individual lots.

The homes are typical of homes constructed during that era with gabled roofs, open verandahs and barn shake roof covers. The building materials used during the construction were common at that time, and the original cabinetry, cedar and fir flooring, fir and pine ceilings, windows and fixtures remain within the homes.

These homes and grounds have been beautifully maintained and provide an excellent example of heritage conservation within Whonnock and the District of Maple Ridge.





JAPANESE KINDERGARTEN

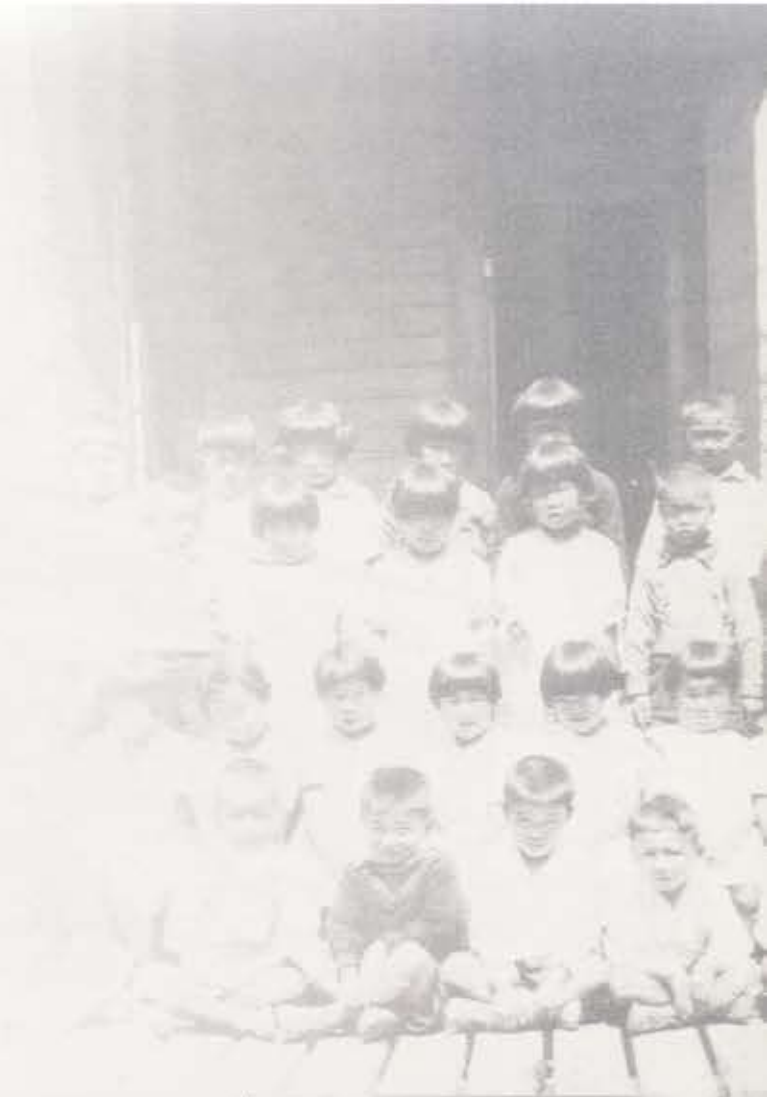
11739 223rd Street

Plaque Date: February 12, 2000

In 1926 the Japanese community built an agricultural hall called the *No-Kai*, which was used for all their meetings, parties and community events. The building was originally located at 23171 Dewdney Trunk Road, and in 1936, a separate kindergarten was added to the complex. In 1989, the former kindergarten was threatened with demolition, and moved by the District of Maple Ridge to its current location.

The Fraser Information Society, Community Education on Environment and Development (C.E.E.D.) Centre won a District of Maple Ridge Heritage Award for Commercial Heritage in 1996 for their maintenance of this historic building.

The former Japanese Kindergarten represents a surviving link with the District of Maple Ridge's early Japanese community, and for that reason is presented with this Heritage Plaque.

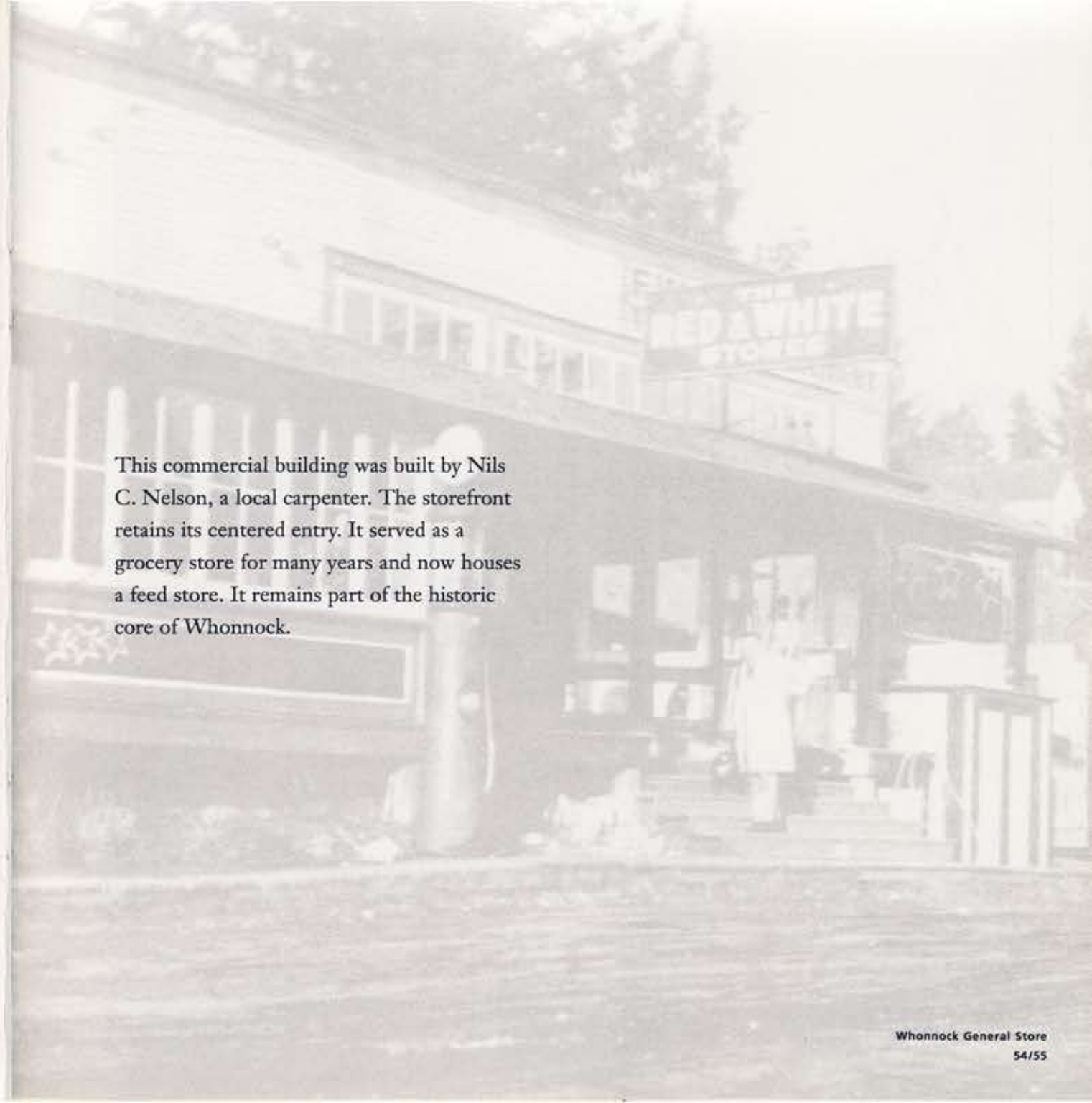




WHONNOCK GENERAL STORE

26927 River Road

Plaque Date: November 25, 2000



This commercial building was built by Nils C. Nelson, a local carpenter. The storefront retains its centered entry. It served as a grocery store for many years and now houses a feed store. It remains part of the historic core of Whonnock.



WHONNOCK POST OFFICE

26927 River Road

Plaque Date: November 25, 2000

Postal service was established in Whonnock in 1885. This small postal station was built by R.S. Whiting; it was rebuilt in 1928 and again for the final time in 1932. It stands in the very centre of the Whonnock commercial area and is symbolic of the community that it has served for many years.





STOREY GREEN (CHARLETON GENERAL STORE)

26927 River Road

Plaque Date: November 25, 2000



Mary Berry Charlton was one of Haney's most ambitious and determined women. She came to Maple Ridge with her husband Alfred Charlton in about 1901, when they ran Charlton's Store on the Port Haney wharf. He enlarged the dock, serving as Postmaster and steamship agent. Alfred drowned in 1907 while crossing the frozen Fraser River, but Mary, now with two young sons, carried on his work.

A cousin William Storey came to help her with the store, where she continued to serve as postmistress. They married in 1918. Mary Storey went on to build a number of stores and buildings in the community, including the Bank of Montreal, a new general store and post office across the street from the train station, and another post office building in upper Haney. Mary Storey served as president of the Haney Women's Institute, and participated in the Ladies Tennis Club and Maple Ridge Golf Club.

Storey Green was created as part of the Fraser River Walk in 1992, and enhanced by the work of the Maple Ridge Garden Club and Communities in Bloom.



2001 Maple Ridge Community Heritage Commission Members:

Councilor Linda King	<i>Council Liaison</i>
Sheila Nickols	<i>Maple Ridge Historical Society</i>
Amber Kostuchenko	<i>Maple Ridge Historical Society</i>
Edwin Landale	<i>Community at Large</i>
Fred Braches	<i>Community at Large</i>
Ken Swain	<i>Community at Large</i>
Jim Charlebois	<i>Planner, Staff Liaison</i>
Sandra Belley	<i>Committee Assistant</i>

The Community Heritage Commission's mandate is to advise Council on heritage conservation matters and undertakings and provide support for activities that benefit and advance heritage conservation in the District of Maple Ridge.

Its mission is to provide leadership to the community through recognition, partnerships, resources and the sharing of information to preserve our valuable heritage.



The Maple Ridge Community Heritage Commission wishes to thank the following individuals for their contribution to the success of the Heritage Plaque Program and the production of this book.

Val Patenaude, *Maple Ridge Museum Curator*

For her assistance in bringing to light the rich photographic history of the original communities within Maple Ridge.

and

Harry Blackwell, *Architect*

For the distinctive style and characteristics of the drawings he completed for the majority of the plaques acknowledged in this book.

The Commission gratefully acknowledges the financial support of the Maple Ridge Council, without which the success of the Heritage Plaque Program and the production of this book would not have been possible.

The Commission also recognizes the contribution of all previous members of the Heritage Advisory Committee, whose dedication to the protection of the heritage resources of our community have helped ensure the success of the Heritage Plaque Program.

- Cover Image Bank of Hamilton (Maple Crescent) c.1917, Port Hammond (P227)
- Opening page River Road c.1920, Port Haney (P1062)
- Inside Cover MacLean High School, Haney (P4328)
- Table of Contents (p.4) Centennial Pool Opening 1958, Haney (P3032)
- Introduction (p.6) First Haney Hotel c.1914, Port Haney
 - p. 9 background: Mrs. Jessie Brown & Beth Brown, Haney (P 04415); inset: MacLean High School, (P4328)
 - p. 11 top: St. Andrews Church and Manse c.1920, (P970)
 - p. 13 bottom: Haney Brick and Tile Office c.1940, (P1309)
 - p. 15 background: Princess Margaret Royal visit 1958, Haney (P1175)
 - p. 17 background: Bank of Montreal original location c.1910, Port Haney (P00048)
 - p.18/19 background: Masonic Hall original location (Lougheed & 224th) 1936, (P00386); top: Moving Masonic Hall to new location 1980's, (P02063)
 - p. 20 St. John the Divine Church c.1900, (P01052)
 - p. 25 background: Port Hammond Elementary School 1912, (P04473)
 - p. 29 Maple Ridge Golf Course Maple Tree 1994
 - p. 31 background: Abernethy & Lougheed Office c.1925 (P04103)
 - p. 33 background: Ruskin Elementary School class photograph 1938, (P01869); inset: Ruskin Elementary School 1977, (P02684)

- p. 37 background: St. John the Evangelist Church (date unknown), Whonnock (P02257)
- p. 41 background: Bank of Hamilton (Maple Crescent) c.1917, Port Hammond (P227)
- p. 43 top: Webster's Corners United Church c.1918, (P00409)
- p. 44/45 background: Webster's Corners Elementary School class photograph 1908 (James Webster in left of photo next to teacher), (P02915); inset: Rear View of double schoolhouse 1951, (P03143)
- p. 48/49 background: Ruskin Hall (date unknown) (P02484); background: Community gathering 1943, (P01838)
- p. 51 background: Brian Byrnes c.1938, Whonnock (P413)
- p. 52 background: Japanese Kindergarten class photograph c.1930, (P1072); inset left: CEED Centre 1990; inset right: Japanese School (unknown date), (P02735)
- p. 55 background: Whonnock Red & White Store, late 1920's, (P417)
- p. 57 inset: Whonnock Post Office c.1925, (P0418)
- p. 59 background: Port Haney riverfront, 1901-09, (P00395); inset: Charleton General Store, 1905-1910, (P00398)
- p. 60/61 background: Port Haney c.1908, (P407)
- p. 62/63 background: Clappison Butchers 1929, Port Haney, (P1057)
- p. 64 background: Ontario Street 1926, (P399)

Historic photographs courtesy of the Maple Ridge Museum.