

# Seasonal Curbside Patio Program Design Guidelines

---

April, 2025

v1.1



Prepared by:  
**DIALOG**<sup>®</sup>

# Introduction

## What?

The Seasonal Curbside Patio Program provides eligible businesses across Maple Ridge the opportunity to use public sidewalks and streets\* for seating and dining areas, retail displays, customer waiting areas, meeting space, planters, and similar uses to enliven the community. This user-friendly “how-to” document is filled with creative ideas, construction know-how tips, and guidelines to help local businesses navigate this new program.

## Why?

Maple Ridge is full of creative, thriving businesses and restaurants, and these contribute to the vibrancy of our City’s streets and public spaces. Many businesses are looking to expand their outdoor spaces to offer more dining options, greater seating capacity, and a more welcoming entry into their place of work. By taking advantage of outdoor space in the public realm, these businesses will be able to benefit while at the same time contributing to more vibrant streets.

## When?

Applications are accepted anytime - there is no deadline. Patios that encroach into the street (Type C/D) may be operated between April 1 and October 31 each year, while Type A/B patios may be operated year round.

## How?

This guide will help owners navigate the new program, showcasing a number of standard patio types that they can select from. They will then be provided all of the basics – how to go about building them and what to keep an eye out for – as well as how to apply to the City.



Source: Noel - Adobe Stock.



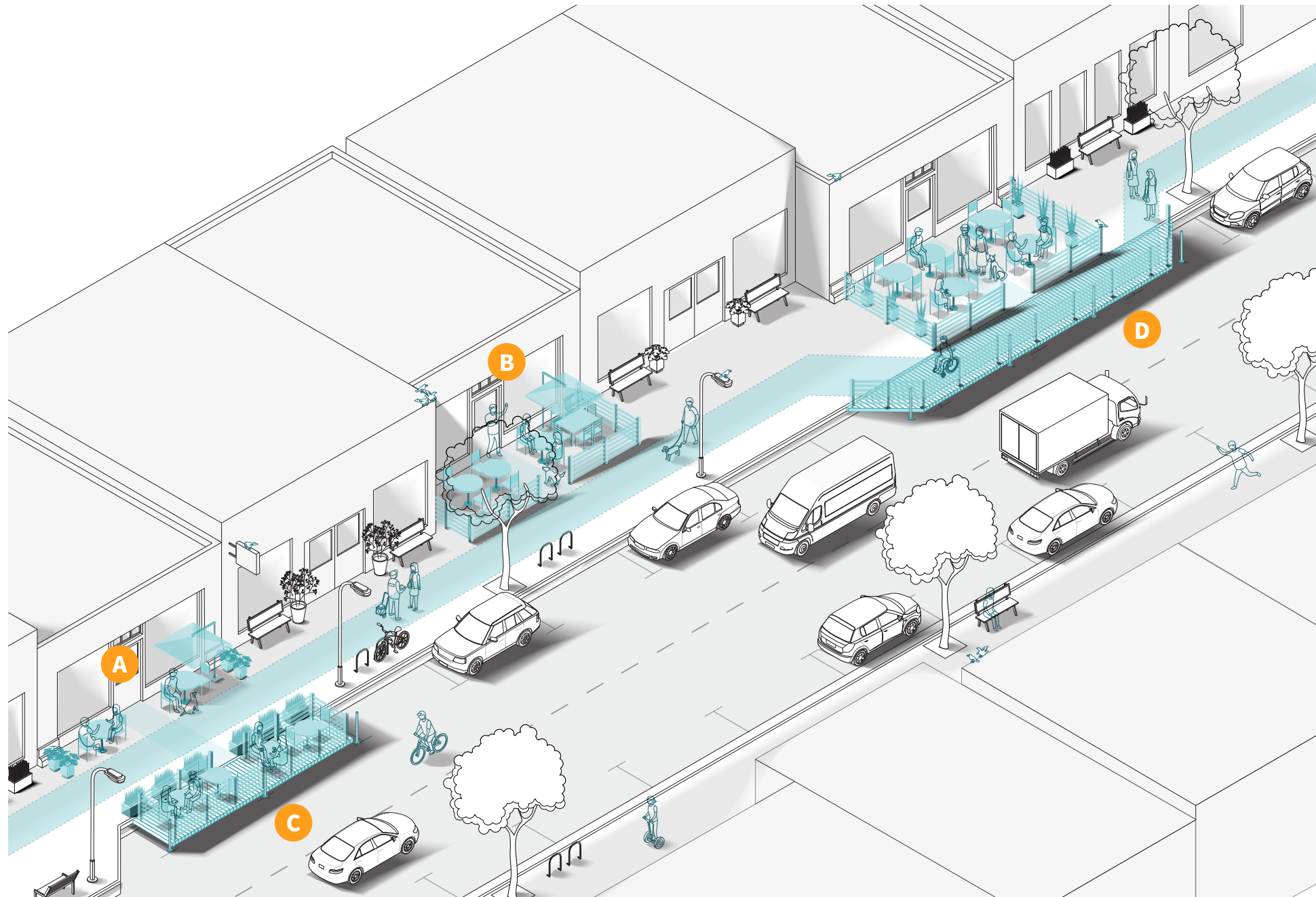
\* This guide applies to patios located on public property – on sidewalks and in curbside parking lanes. Patios located on private property, within an existing building envelope, or behind the property line are not covered and will be governed by the Building Permit process.

## Table of Contents

Introduction	2
Patio Basics	3
The Typologies	4
Patio Type A	5
Patio Type B	6
Patio Type C	7
Patio Type D	8
Safety + Accessibility	9
Planning + Construction	10
How to Apply	11
Appendix	12



# The Typologies



**!** This guide applies to patios located on public property – on sidewalks and in curbside parking lanes. Patios located on private property, within an existing building envelope, or behind the property line are not covered and will be governed by the Building Permit process.

## Patios for Every Place

The Seasonal Patio Curbside Program allows for four general patio types, each with varying degrees of complexity. You can select one of these four as a starting point in creating your outdoor space.

### Patio Type A

Type A is the most basic option - this is the least permanent route. It consists of putting basic furniture out front of the business.



Tier 1

### Patio Type B

Type B is similar to A, but includes a perimeter fence (or raised platform). Fencing could be simple or semi-permanent and is usually required for licensed service areas.

### Patio Type C

Type C is a semi-permanent patio that takes up the curbside parking space. Pedestrian traffic remains on sidewalk, and the parking space is used for people instead of cars.

### Patio Type D

Type D is a semi-permanent patio that takes up the whole sidewalk; pedestrian traffic is routed onto a new boardwalk in the curbside parking area (protected from the roadway).



Tier 4

# Patio Type A

## The Sidewalk Café

When you just want to put some small tables and chairs outside to provide seating for take-out treats, set up a small retail display, or set out planters to brighten up your storefront and encourage a bit of interaction with the sidewalk, the Sidewalk Café is the way to go. This simple option allows for basic furnishings to be placed in front of your business, and the main requirement is that the adjacent sidewalk and entries/exits are kept clear.



### When to Use

When you want to quickly and easily create outdoor space that is flexible and easy to disassemble. This option also works in the most spatially constrained areas.



### Where to Locate

On the sidewalk directly in front of your business. This can either be tight against the building face, or set out slightly to allow for movement or planters.



### Spatial Requirements

The width of the patio is limited to the area directly in front of your business, and the depth must allow for a minimum 1.8m clearance of the sidewalk in front.

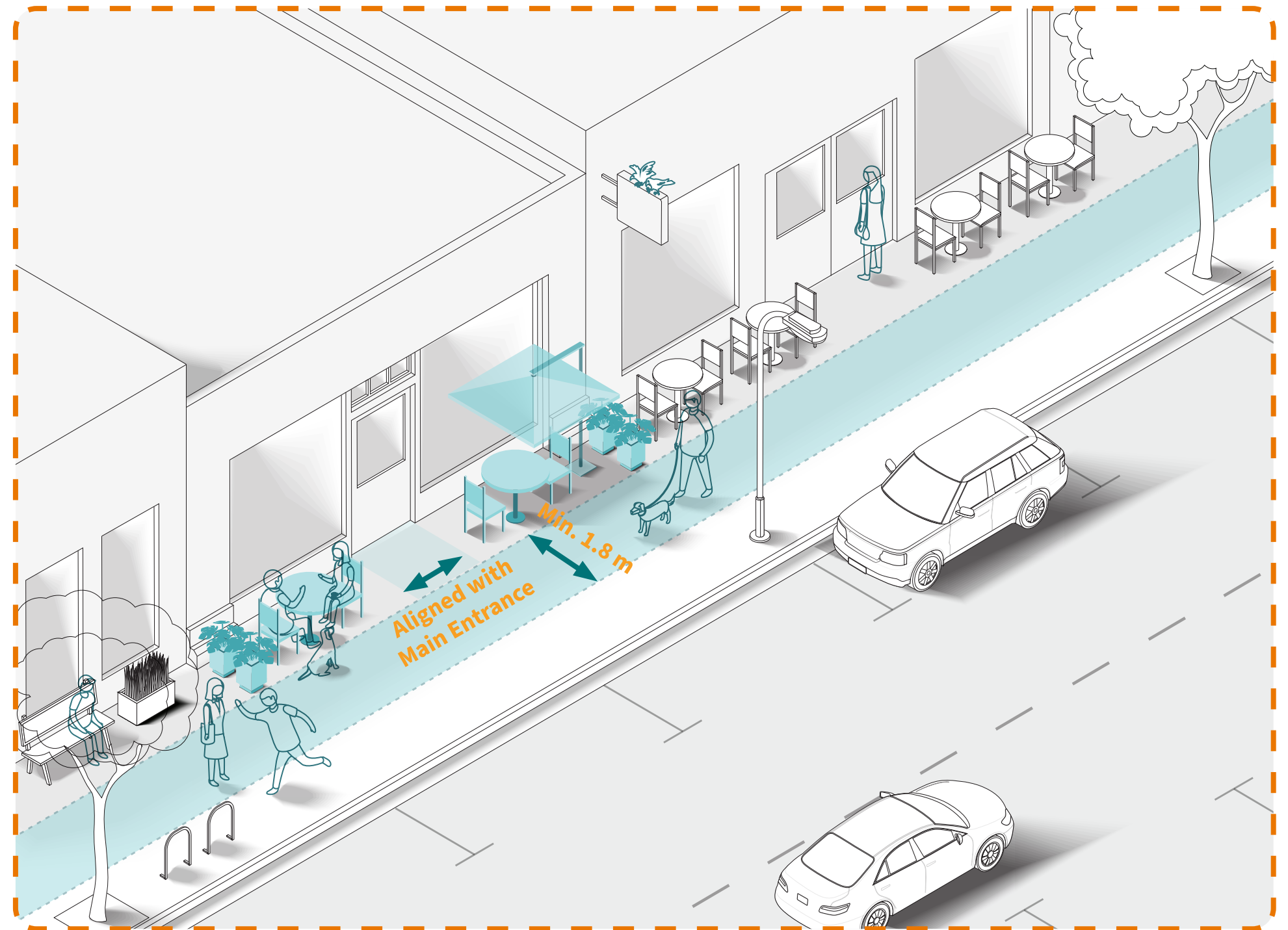


### Additional Considerations

No fencing is required, and no built structures or platforms are needed. Type A is not suitable for licensed patios. Umbrellas are allowed as long as they do not impede people walking nearby. Tables, chairs, and umbrellas should be taken in at the end of each day, to be replaced each morning.

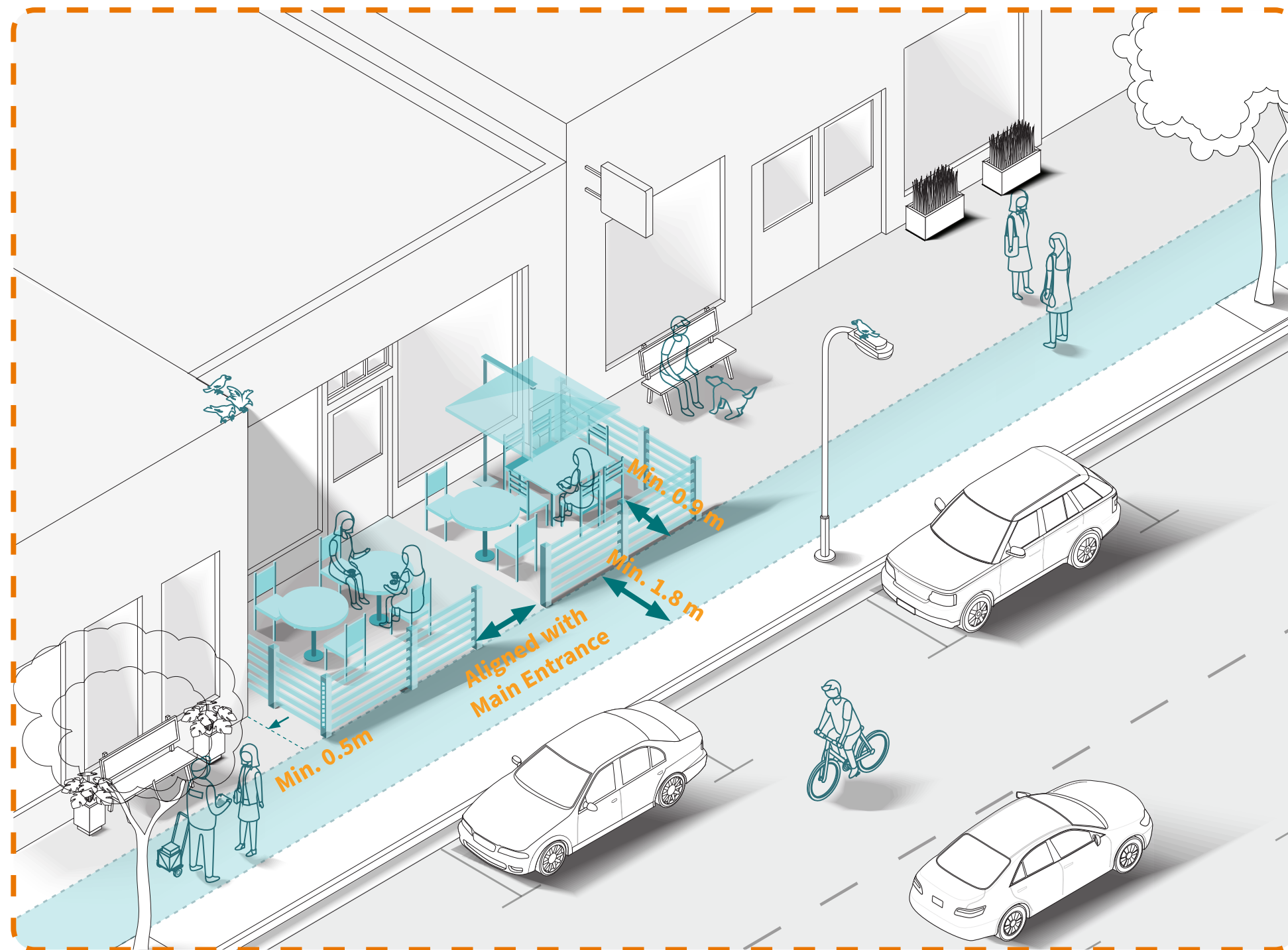
**Type A may be year-round with approval from the City.**

## Type A Diagram



# Patio Type B

## Type B Diagram



### The Front Porch

The Front Porch is slightly more complex than Type A, and includes placing furnishings out front as well as a perimeter fence (or an accessible raised platform). It can be wider than the Sidewalk Café, and allows for more options - such as bigger tables, more chairs, heaters, planters, etc. It is a great option for outdoor dining experiences offered by bistros or breweries.



#### When to Use

When you want to include a larger patio space out front of your business (or need fencing for alcohol licensing reasons), and the sidewalk is wide enough to allow for pedestrians to pass.



#### Where to Locate

On the sidewalk directly in front of your business, extending out into the wider sidewalk zone. Pedestrians remain on the sidewalk and are routed between the patio and the curb.



#### Spatial Requirements

The width of the patio is limited to the area directly in front of your business, and the depth must allow for a minimum 1.8m clearance of the sidewalk in front of any fencing. Space between fencing / furnishings to allow for min. aisle width of 0.9m.



#### Additional Considerations

Any fencing should be provided around the exterior of the patio zone, and should allow for proper entry and exiting of nearby doorways. A raised platform may be provided subject to proper accessibility requirements. For added accessibility friendliness, consider adding reflective markers on the corner patio posts nearest to the diversion.

**Type B may be year-round with approval from the City.**

# Patio Type C

## The Parking Pop-Up

If your desire is to create a more creative, expanded zone for seating or retail display - or you are tight on sidewalk space - then the Parking Pop-Up is a good option. It is located in an on-street parallel parking spot, and can be situated on the asphalt or on a raised platform. This type of patio must include guardrails around the perimeter as protection from traffic.



### When to Use

When you want additional patio space, but the sidewalk in front of your business is limited - and you have access to a parallel parking spot nearby.



### Where to Locate

Within one parking stall in the on-street parallel parking lane near the front of your business. Your patio may extend beyond the width of your business frontage if the parking stall does not align with your business.



### Spatial Requirements

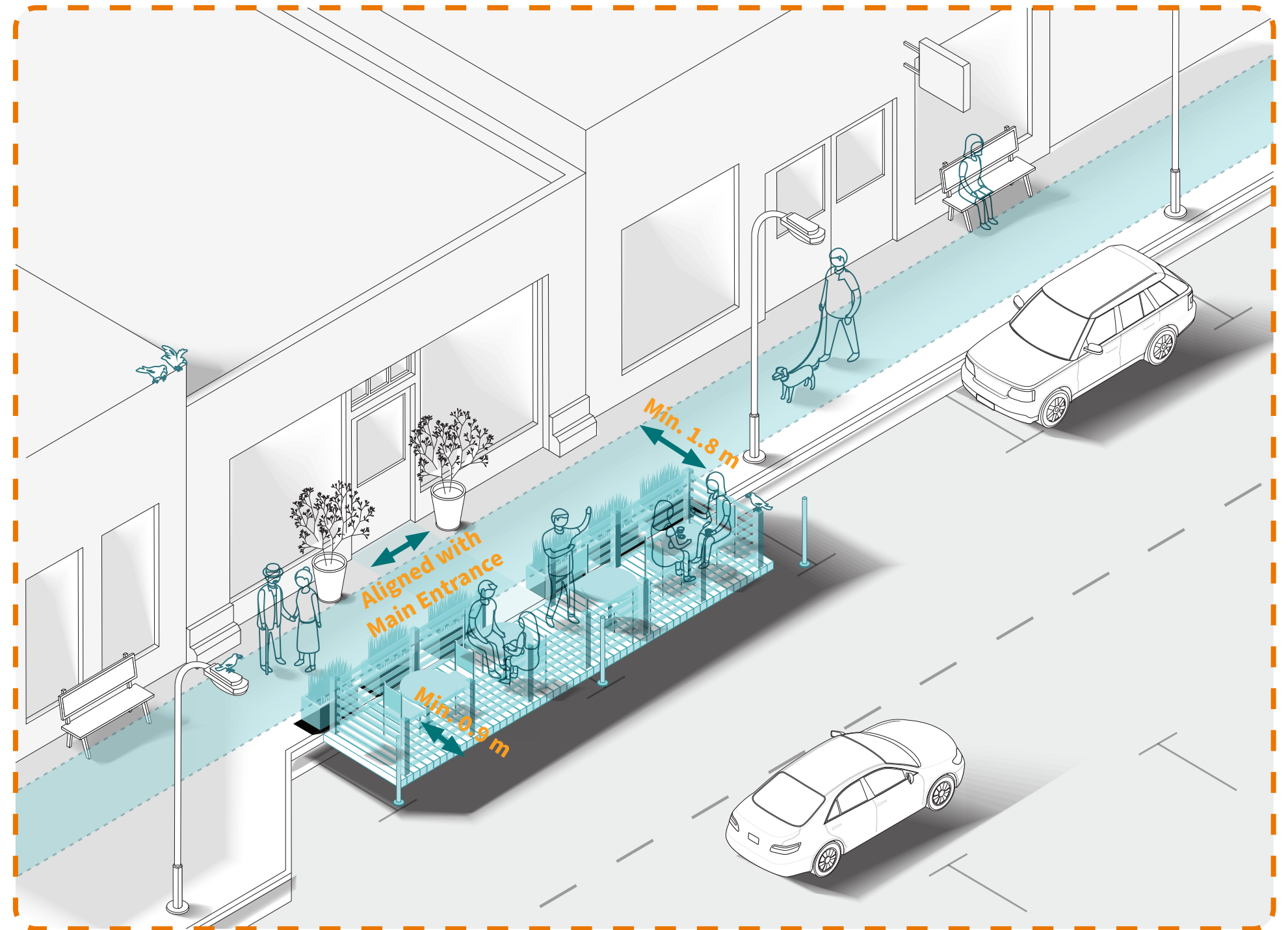
The patio - incl. a 0.5m buffer on either side - must be a minimum one parking space in length (typ. 6.25m). Its depth - incl. a 0.5m buffer on the travel lane side - is a maximum one parking space wide (typ. 2.4m) and must not extend into the travel lane.



### Additional Considerations

Fencing is required around the perimeter of the seating zone to separate it from the adjacent travel lane. The patio may extend onto the adjacent sidewalk provided 1.8m clearance is maintained. A raised platform is encouraged where possible, but regardless - any patio is subject to proper accessibility requirements with proper ramping.

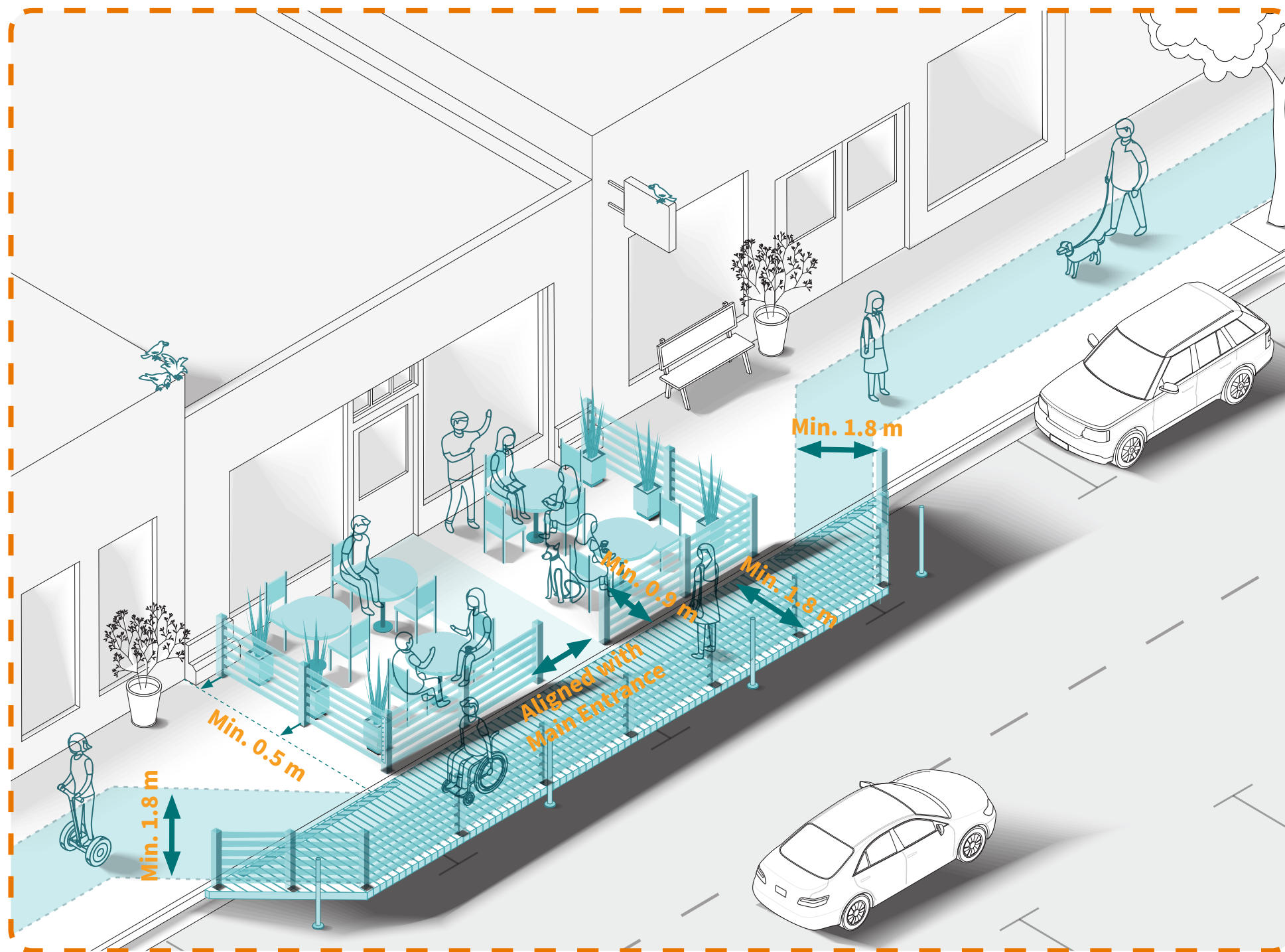
## Type C Diagram



**Note:** Patios located in angled parking spaces will be reviewed and approved on a case-by-case basis.

# Patio Type D

## Type D Diagram



**Note:** Diversions located in angled parking spaces will be reviewed and approved on a case-by-case basis.

## The Full Sidewalk

The most complex patio option is the Full Sidewalk. If you want to maximize outdoor space then this is the choice for you. A fully enclosed patio is created across the sidewalk, and to accommodate pedestrians it is paired with a diversion boardwalk around the exterior. The pedestrian traffic that is routed onto this new boardwalk requires perimeter fencing.



### When to Use

When you want to maximize the outdoor space for your business and you have both a larger sidewalk out front as well as a parallel parking spot out front.



### Where to Locate

On the sidewalk directly in front of your business, extending over the wider sidewalk zone. Pedestrians are diverted into a boardwalk bypass in the adjacent parallel parking lane.



### Spatial Requirements

The width of the patio is limited to the area directly in front of your business unless you come to an agreement with your neighbours. Fencing must be offset 0.5m from the neighbouring property.



### Additional Considerations

Boardwalk structures and the patio must include a guardrail. You should consider providing a level, at-grade platform for the diversion to allow for a continuous, accessible path of travel. The patio and diversion must allow for an unobstructed path of travel for pedestrians and all entries/exits. For added accessibility friendliness, consider adding tactile strips at the sidewalk / boardwalk interface and reflective markers on the corner patio posts nearest to the diversion.

# Safety + Accessibility

## Safe and Equal Access for All

For all of the patio types, there are important safety requirements to make sure conflict areas are reduced and any uses in the curbside parking areas are properly protected. It is important to also note accessibility requirements so that patios provide barrier-free access to all users. These points are in addition to typical requirements to be found in other municipal documents.



Source: Adobe Stock.



### Road Safety

Patios requiring a pedestrian diversion or seating in a curbside lane are not allowed on any road with a posted maximum speed higher than 50 km/h, and only allowed to replace roadway space if located in an existing on-street parking space. The side adjacent to vehicle traffic must be at least 0.5m from any adjacent travel or bike lane.



### Intersections + Sightlines

Patios must be min. 6.0m from the corner of an intersection (stop/yield sign or signals) or an intersection with a marked pedestrian crosswalk. Maintain min. 3.0m from the edge of a driveway. They must maintain traffic sightlines as noted in Highway and Traffic Bylaw 6704-2009.



### Fencing

Fencing must be min. 0.75m and a max. of 1.0m in height. It must not be anchored directly into City paving, and it should be strong enough when pushed upon to support the weight of an individual who needs to brace oneself to prevent a fall. In certain circumstances the City may require cane-detectable edges at posts for the visually impaired.



### Locked Spaces

Any fencing or enclosures should provide clear entry and exit points, and no lockable gates or dead ends are allowed.



### Fire Safety

All building materials and entry/egress routes must be as per applicable fire codes. Fire hydrants require 1.8m clear in the front (in special circumstances 1.0m may be accepted to the side/rear). Building fire connections require min. 0.5m clearance to the side and 1.8m to the front.



### Lighting + Heating

Portable heating is allowed provided it complies with relevant standards and does not connect to a building-based fuel source. Any propane tanks used cannot exceed 20lb capacity and must be securely stored overnight. String lights may only be affixed to private property with authorization; any lights should not impact residential units.



### Exiting

Patios cannot block any building exit, including any emergency exits, or impede the exit path to safety. Patios with a railing must have at least one exit through the railing (not back into the building). Exits must be at least 1.5m wide and obstacle free. Exits must be clearly visible to patrons, or clearly marked with exit signs.



### Utilities

Patios cannot be located overtop of underground utility vaults, and must not obstruct utility connections/disconnects, lines, meters, or obstruct access to utilities in any manner. In-ground vaults, above ground kiosks, valves, manholes, and other City or third party utilities require a min. 0.3m buffer.



### Accessible Paths of Travel

Pathway widths to accommodate continuous, barrier free pathways through or around patios must be provided. Sidewalk clearances of 1.8m must be maintained either on-sidewalk or through a pedestrian diversion. All passageways through any fencing or between furnishing items must be at least 0.9m wide, accessible, and obstacle free.



### Ramps / Inclines + Turning Radii

Changes in grade must meet Americans with Disabilities Act (ADA) Standards. Where the vertical separation between two surfaces is more than 13mm, a ramp or incline is required - at a maximum slope of 1:12. All passageways, intersections, and spaces between items should allow for wheelchair users to turn/proceed without barriers.



### Surfacing + Cane-Detectable Fencing

All constructed platforms should include slip-resistant surfacing, including for any seating areas as well as pedestrian diversions. Cane-detectable fencing or bounding is required for Patio Types B, C, and D to ensure safe passage of visually impaired persons.



### Accessible Parking

Accessible Parking Spaces are reserved for vehicles with disabled parking placards and cannot be used for any pedestrian diversions or patio spaces. Patios and diversions must not block access to these parking spaces.

# Planning + Construction

## Building for Success

All patios are encouraged to be built with creativity, and to be constructed with a similar materials palette to create vibrant streets with a somewhat consistent look and feel throughout the community. This page provides some simple “how-to’s” for choosing materials, colours, and construction techniques. It also includes helpful tips on how to avoid common mistakes and how to adhere any important technical requirements.



### Make a Plan

Once you have picked one of the patio types for your business, sit down and come up with a basic plan. The details of a plan will vary with each patio type you choose and complexity.



### Tools + Expertise

Decide on the complexity of the construction required and assemble all tools. Construction must be safe and durable, and all patios are subject to inspection by the City.

### Materials + Colours

To ensure consistency and vibrancy across our streets, materials are encouraged to be concrete, wood, and black for any metal railings/posts. Colour can be introduced through the use of plantings, and the corners of the installation must be marked with yellow high intensity retro-reflective tape or reflectors. Other elements as required are to be black or a neutral colour.



## 1 General Requirements

The construction of all patio spaces must meet the following general requirements:



### Drainage

For clear passage of water along the curb gutter, platforms/diversions in the curbside space must include a drainage channel (10 cm tall x min. 41 cm wide). Both ends to be covered by a mesh to prevent debris from accumulating.



### Signage

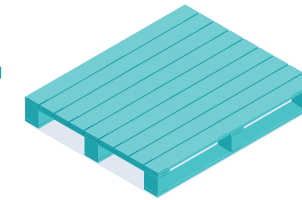
No signage is allowed to be affixed to any fencing or structures within the patio or diversion areas. Fencing must be kept clear of any branded content or advertising.



### Overhead Structures

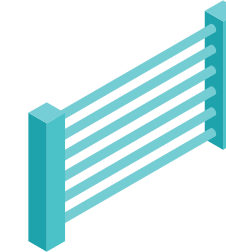
Under the Seasonal Patio Program, no overhead structures or tarps are allowed. This includes any rain protection beyond single-post umbrellas or those affixed to a building.

## 2



### Platform

If your patio requires a built platform for seating or a pedestrian diversion, construct it out of non-slip decking. It must provide a continuous surface with no steps or wide gaps between boards, and not impede drainage. Platforms must be able to be removed in 24 hrs. and not be anchored into the ground.



### Fencing

Fencing to be constructed of wood or black metal and be 0.75-1.0m high; spaces between horizontal or vertical elements less than 10cm or greater than 20cm. Fencing must not be bolted into or permanently affixed to City-owned surfaces, and must be removable within 24 hours if needed.

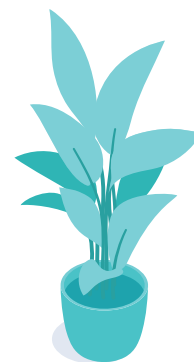
## 3



### Furnishings

A wide range of furnishings are allowed, and should be included to create a comfortable and welcoming space. Some requirements include:

- Seating should be durable and comfortable for individuals and groups of all ages and abilities.
- Umbrellas must be 2.1m above the adjacent surface and not impede any sightlines or overhang adjacent lanes.
- Planters must not be taller than 1.0m and be easily movable within 24 hours if needed.
- Heaters and lighting are allowed as per requirements on previous pages.



## 4

### Common Mistakes + Further Resources

Building a patio can be creative and fun, but may also be prone to mistakes. Listed below are a few items to avoid, as well as some further resources.



### Level Surfaces

The construction of platforms or fence post footings must not create trip hazards, and all changes in areas must be flush and not include small ledges.



### Constructibility and Permanence

Balancing safe and accessible spaces with a 24-hour removal requirement can be tricky - aim to use materials and joining techniques that can be easily disassembled.



### Following Guidelines

Some of the more complex patios listed above may need to conform to local building codes. Make sure you are aware of all relevant construction guidelines.

# How to Apply

## Process and Design

To create a Seasonal Patio in front of your business, first review the contents of this document and decide on what style of patio you would like to create. Then follow this simple step-by-step guide for the application process with the City.

### Prepare a Patio Plan

1

All applications for the Seasonal Curbside Patio Program must include a patio plan. The scale and complexity of this plan will vary based on which Patio Type you have chosen - with Type A being the simplest and Type D being the most complex. A sample patio site plan is included in the Appendix of this document.

## Permitting and Cost

Front Porch, Parking Pop-Up, and Full Sidewalk (with Pedestrian Diversion) Patios (Types B/C/D) will require Highway Use Permits to regulate their location, operation, maintenance, and insurance. Sidewalk Cafes (Type A) do not require a Highway Use Permit, but an application must still be made and an insurance certificate must be supplied (due to their low impact on public space these can expect a quick approval). The current cost of a Highway Use Permit and more information on fees and charges is available from the City of Maple Ridge's website.

### Complete the Application Form

2

Further detail on the Seasonal Curbside Patio Program Application Form is available from the City of Maple Ridge's website. To complete the Application Form, you will need to submit all relevant information for your business along with the plan completed in Step 1, photos of your proposed patio location, and a Certificate of Insurance.

### Pay the Application Fee and Submit

3

You must pay for a Highway Use Permit from the City, and then you can submit your application. The City will review your application and may let you know if any revisions are required. Once you have an approved permit you may install your patio at the start of the season.

Please contact [patios@mapleridge.ca](mailto:patios@mapleridge.ca) with questions, or to submit your patio application.



**Businesses applying to the Seasonal Curbside Patio Program are required to carry a minimum of \$2 million in liability insurance for all Type A/B and Type C/D (unlicensed) patios. Type C/D patios licensed for liquor service require \$5 million in liability insurance. All insurance must name the City of Maple Ridge as additional insured.**

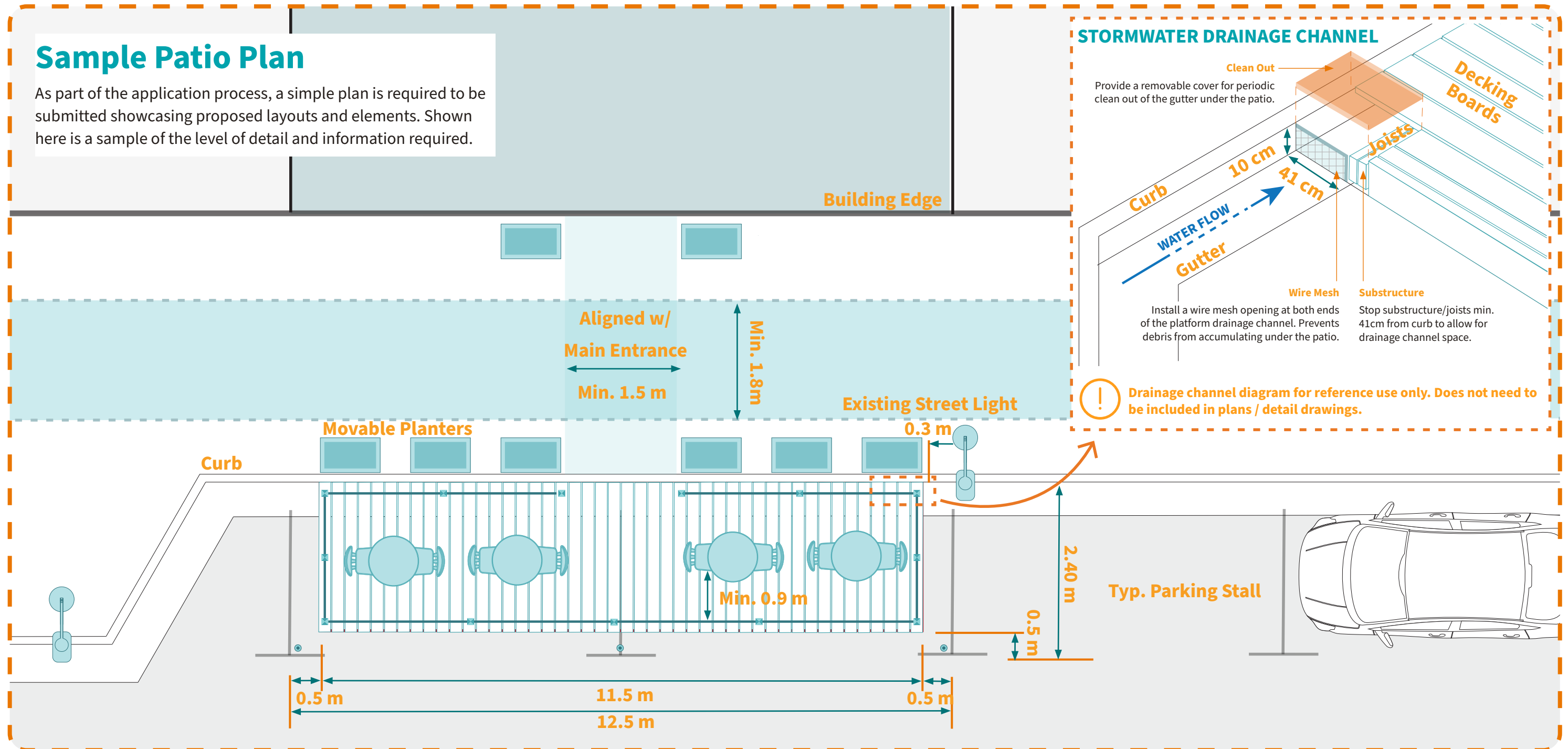


Source: HildaWeges - Adobe Stock.

# Appendix

## Sample Patio Plan

As part of the application process, a simple plan is required to be submitted showcasing proposed layouts and elements. Shown here is a sample of the level of detail and information required.



# Appendix

## Further Information

Patios are allowed for eligible businesses located in any of the following zones: C-1, C-2, C-3, C-4, C-5, CRM, H-1, H-2, and CD-1-17. Visit [gis.mapleridge.ca/ridgeview](https://gis.mapleridge.ca/ridgeview) or call 604-467-7341 to confirm your zoning.

## Bylaw Compliance

All patio operators must comply with all applicable City bylaws, including but not limited to:

- Business Licensing and Regulation Bylaw No. 6815-2011
- Fees & Charges Bylaw No. 7575-2019
- Fire Prevention Bylaw No. 4111-1998
- Highway and Traffic Bylaw No. 6704-2009
- Noise Control Bylaw No. 5122-1994
- Sign Bylaw No. 7630-2020
- Smoking Regulation Bylaw No. 6968-2013
- Unsightly Premises Bylaw No. 6533-2007

## Contact

Please contact [patios@mapleridge.ca](mailto:patios@mapleridge.ca) with questions, or to submit your patio application.



**Details of the Seasonal Curbside Patio Program, including this document, are subject to amendment from time to time. Please visit the City of Maple Ridge website for the latest version of materials.**



Source: City of Maple Ridge.

