

2020 - 2030 Maple Ridge

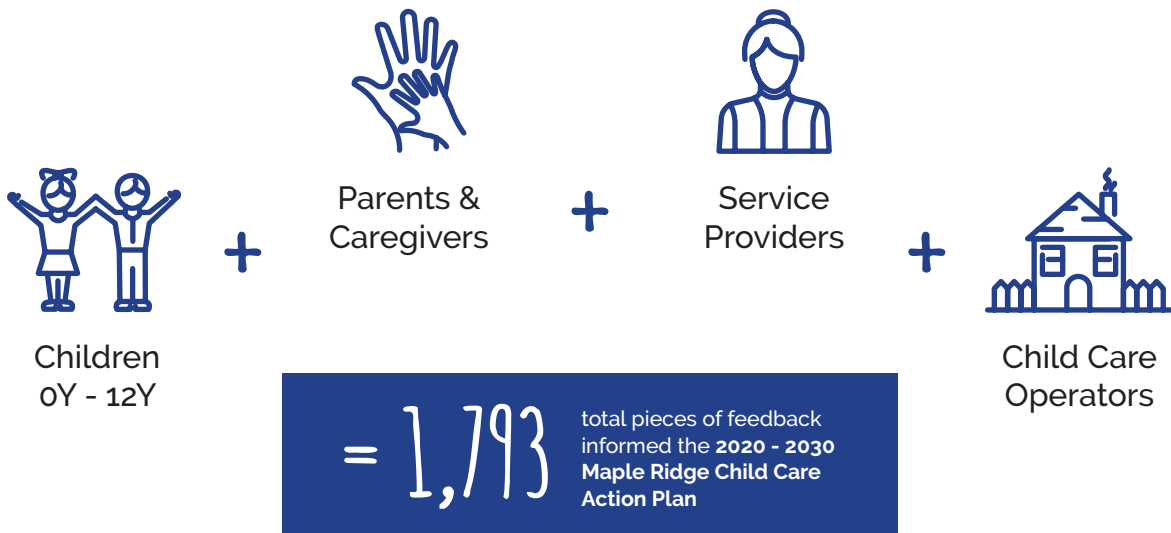
CHILD CARE

ACTION PLAN



NEEDS ASSESSMENT RESULTS AT-A-GLANCE

The City of Maple Ridge received a \$25,000 grant in Spring 2019 from the Provincial Community Child Care Planning Program (Union of BC Municipalities) to create a Child Care Action Plan. A Needs Assessment was conducted in 2019/2020, collecting feedback from local children, parents/caregivers, service providers and child care operators. The results of the assessment, along with supporting data, informed the **2020 - 2030 Maple Ridge Child Care Action Plan**. Here are some assessment results at-a-glance!



TOP 3 CHALLENGES

FOR PARENTS & CAREGIVERS

1. Cost
2. Availability of part-time child care
3. Hours of operation



TOP 3 BARRIERS

THAT SERVICE PROVIDERS PERCEIVE

1. Cost & affordability
2. Availability of child care spaces
3. Cultural gaps in providing programming & care



TOP 3 WISHES

FROM PARENTS & CAREGIVERS

1. More spaces/availability
2. Lower cost
3. More onsite before/after school spaces



TOP 3 SUGGESTIONS

FROM SERVICE PROVIDERS

1. More special needs funding
2. More child care flexibility
3. Training for ECED

PROGRAMS THAT PARENTS & CAREGIVERS WOULD LIKE TO SEE MORE OF...



drop-in programs



registered programs



sports



parent support



library programs located closer to the child care programs their children access



TOP 5 PRIORITIES FOR MAPLE RIDGE

1. Affordability
2. Availability of child care spaces to meet families' needs
3. Accessible and flexible solutions, including part-time care, extended and non-traditional hours
4. Location of child care centres in schools, or new residential areas
5. Increase awareness of Child Care Supports & Community Resources to support and provide resources

