



CANDIDATE

2026 Nomination Package

School Trustee



Election@MapleRidge.ca | 604-467-7423 | MapleRidge.ca/Candidate

Contents

Letter from the Chief Election Officer	3
2026 Election Calendar	4
Instructions For Completion Of The Nomination Documents.....	5
Instructions For Completion Of The Statement Of Disclosure.....	9
Instructions For Completion Of Additional Documents	10
Information About Campaigning In The 2026 Local General Election.....	12
Information On The Campaign Financing Disclosure Statements In The 2026 Local General Election ...	14
TAB 1 - Candidate Nomination Package	15
Nomination Documents (Forms CS1-CS6)	15
Statement of Disclosure.....	15
Candidate Information Release Form	15
Request for Copy of List of Registered Electors.....	15
Candidate Bio (submit electronically after filing, due by Sept 18).....	15
TAB 2 - City of Maple Ridge & SD42 Reference Material.....	16
Notice of Nomination.....	16
100 metre Radius Maps for Election Signage	16
TAB 3 - Additional Reference Material	17
City of Maple Ridge.....	18
School Trustee Links	18
Elections BC	18
Province of BC	19

Letter from the Chief Election Officer

Re: Candidacy for Mayor and Councillor in the General Local Election on October 17, 2026

Dear Prospective Candidate,

Enclosed is an information package to guide candidates considering running in the City of Maple Ridge 2026 General Local Election. Please review the package carefully.

It is intended to help you understand the nomination process, your responsibilities as a candidate, and rules that apply to campaign financing and election-related activities. Reviewing these materials will help ensure that your nomination documents and campaign financing disclosure forms are submitted correctly, and that your campaign complies with applicable legislation.

The nomination package is organized into three tabs:

- **Tab 1** contains the forms that candidates may need to complete during the nomination period, including both required and optional forms. Instructions for completing and submitting these forms begin on page 5.
- **Tab 2** contains reference materials specific to the School Trustee Election. The first page of Tab 2 lists the documents included in that section and provides links to additional reference materials available online but not included in this package.
- **Tab 3** contains links to reference materials for prospective candidates throughout BC.

Prospective candidates are strongly encouraged to review all materials in Tabs 2 and 3, as well as the online resources referenced in those sections. If you are unable to view any of the links, or need assistance with the materials, please contact the Election Office.

New Candidate Information for 2026 Election:

Please note that there are new campaign financing and advertising rules for the 2026 General Local Elections. These rules apply to all candidates, elector organizations, and third-party advertisers, and are administered by Elections BC. Candidates should review the information provided by Elections BC at

<https://elections.bc.ca/local-elections/2026-general-local-elections/>

All communication between candidates and the City will take place by email. Any material received by the City on behalf of a candidate will be scanned and sent electronically. If a document cannot be emailed, you will be notified that it is available for pick up at the reception desk at municipal hall between 8:00 a.m. and 4:00 p.m., Monday to Friday, except statutory holidays. If you require alternate pickup, please contact the undersigned.

During the election period, candidates often have questions and inquiries about the City of Maple Ridge and its operations. To ensure that all candidates have equal access to information, requests will be handled as follows:

- If the request relates to publicly available information, such as bylaws, financial statements, or material received at a Regular Council meeting, this material will be provided.
- If the request relates to matters discussed at a closed meeting or to information that is confidential, the information will not be released.
- If the request requires staff research, the candidate will be asked to submit the question to the Chief Election Officer who will arrange for a written response.
- Any information provided in response to a candidate's request will be shared with ALL candidates.

The City does not organize all-candidates' meetings. However, if the City receives information about all-candidates' meetings organized by third parties, that information will be posted on the City website.

Please contact the Election Office at **election@MapleRidge.ca** if you have any questions related to your candidacy and the election.

Sincerely,

Carolyn Mushata

Carolyn Mushata
Chief Election Officer

2026 ELECTION CALENDAR

Date	Event
March 10	Last day to meet six-month BC residency requirement for candidates seeking nomination
April 16	Last day to meet six-month BC residency requirement for voters registering on general voting day
June 17	Candidate nomination packages ready for distribution
June 17	Candidate Information Session – 6:00 p.m., Council Chamber, 11995 Haney Place
June 24	Trustee Candidate Information Session – 6:00 p.m., District Education Office, 22225 Brown Avenue, Maple Ridge
August 26	Trustee Candidate Information Session – 6:00 p.m., District Education Office, 22225 Brown Avenue, Maple Ridge
September 1	Nomination period begins at 9:00 a.m. List of registered electors available for public inspection
September 11	4:00 p.m. deadline for: <ul style="list-style-type: none"> • Nomination period • All candidates are officially declared • Period of objection to registered electors
September 15	Period to challenge candidate nomination and elector organization endorsements ends at 4:00 p.m.
September 16	Last day to meet 30-day City property ownership requirement for non-resident voters (resident voters no longer require 30 day residency)
September 17	Mail Ballot Applications available
September 18	4:00 p.m. deadline for: <ul style="list-style-type: none"> • Decision on challenge of candidate nominations/elector organization endorsements • Withdrawal of candidate • Withdrawal of candidate endorsement by elector organization or candidate
September 21	Chief Election Officer declares election at 4:00 p.m.
October 7	Mail Ballots available
October 7	Advance Voting 8:00 a.m. to 8:00 p.m. Albion Community Centre – 24165 104 Ave St. Luke’s Hall – 20285 Dewdney Trunk Rd
October 10	Advance Voting 8:00 a.m. to 8:00 p.m. Ridge Meadows Seniors Activity Centre - 12150 224 St
October 14	Advance Voting 8:00 a.m. to 8:00 p.m. Albion Community Centre - 24165 104 Ave St. Luke’s Hall - 20285 Dewdney Trunk Rd
October 15	Advance Voting 8:00 a.m. to 8:00 p.m. Albion Community Centre - 24165 104 Ave St. Luke’s Hall - 20285 Dewdney Trunk Rd Fraserview Community Hall – 22610 116 Ave
October 17	General Voting Day 8:00 a.m. to 8:00 p.m. Whonnock Elementary School - 27471 112 Ave Albion Community Centre - 24165 104 Ave Garibaldi Secondary School - 24789 Dewdney Trunk Rd Yennadon Elementary School - 23347 128 Ave Ridge Meadows Seniors Centre - 12150 224 St Laity View Elementary School - 21023 123 Ave Hammond Elementary School - 11520 203 St Thomas Haney Secondary School - 23000 116 Ave
October 21	Deadline for declaration of official election results at 4:00 p.m.
November 4	New Board Oath of Office Ceremony Trustee Orientation
November 18	Inaugural Board of Education meeting
January 15, 2027	Deadline for <u>all candidates</u> to file campaign financing disclosure statements with Elections BC
February 16, 2027	Last day to file <u>LATE</u> campaign financing disclosure statements with Elections BC, subject to a \$500 fine.



INSTRUCTIONS FOR COMPLETION OF THE NOMINATION DOCUMENTS

Filing the Nomination Documents

Public Notice is given to the electors of Maple Ridge that nominations for the offices of:

- Mayor (1 to be elected)
- Councillor (6 to be elected)
- School Trustee (5 to be elected)

All Four (4) year terms commencing **November 2026 to October 2030** will be received as follows:

The statutory period for receiving nomination documents begins at
9:00 a.m. on Tuesday, September 1, 2026,
and ends at
4:00 p.m. on Friday, September 11, 2026.

Nomination documents may be delivered by hand, mail, other delivery service, or by email (election@mapleridge.ca) to the Chief Election Officer or designate, 11995 Haney Place, Maple Ridge, BC, V2X 6A9. City Hall is open Monday to Friday, 8:00 a.m. to 4:00 p.m., except for statutory holidays.

Candidates must make a solemn declaration on the documents. The declaration can be taken by a lawyer, notary or Commissioner for Taking Affidavits for British Columbia, but is most commonly taken by the Chief Election Officer or designate at the time the nomination papers are filed. Emailed nomination papers must include the completed, **witnessed** solemn declaration. **It is strongly recommended you file in person.** You can make an appointment on the City website MapleRidge.ca/elections (appointment calendar for Sept 1- 11 will be available starting in mid-August)

Qualifications for Office

- 18 years of age or older;
- Canadian Citizen;
- Resident of British Columbia for at least 6 months; and
- Not disqualified by the **Local Government Act** or any other enactment from voting in an election in B.C. or from being nominated for, being elected to, or holding office, or to otherwise disqualified by law.

Nomination Deposit

The City of Maple Ridge does *not* require a nomination deposit to be paid to run for election to the Office of Mayor, Councillor, or School Trustee.



CANDIDATE Nomination Package

Nomination Documents (all of which are included in Tab 1).

The required nomination documents consist of:

- Candidate Cover Sheet and Checklist Form (CS1);
- Nomination Documents (CS2 – 3 pages);
- Other Information Provided by Candidate (CS3);
- Statement of Disclosure (under the *Financial Disclosure Act*)
- Candidate Authorization Release Form

Optional forms

- Appointment of Candidate Financial Agent (CS4); and
- Appointment of Candidate Official Agent (CS5); and
- Appointment of Candidate Scrutineer (CS6)
- Candidate Acknowledgement of Receipt of List of Registered Electors
- Candidate Profile for the City website (to be submitted online Sept 1-16 at MapleRidge.ca under the Info for Candidates section)

Candidate Cover Sheet and Checklist Form (Form CS1)

Print your legal surname and given names in the appropriate boxes of the Candidate Cover Sheet and Checklist Form (Tab 1).

Section B is a checklist of the documents that should be completed and accompany your nomination package, if applicable.

Nomination Documents (Form CS2 – 3 pages)

Complete the name and address boxes as appropriate.

Use your legal name when completing the form. If the name you commonly use is different from your legal name, and you would like that name to appear on the ballot, enter your usual name in the space provided. For example, if your legal name is Robert Smith, but you are commonly known as Bob Smith and wish to appear on the ballot that way, enter Bob Smith in the usual name field.

Note: the following information cannot appear on the ballot: an indication that the candidate is holding or has held an elected office; the candidate's occupation; or an indication of a title, honour, degree or decoration received or held by the candidate (section 115(3) of the *Local Government Act*).

Nomination Documents will be posted on the City's website, and the forms may also be inspected at the City offices. The Candidates' address will be redacted online.



Nominators' Section

What is a “qualified elector”?

An elector of the City of Maple Ridge must meet ALL of the following qualifications:

1. you are a Canadian citizen;
2. you have been a resident of B.C. for the past six months;
3. you are a resident in the City of Maple Ridge;
4. you are age 18 or older or, you will be turning 18 on or before General Voting Day (October 17, 2026); and
5. you are not disqualified by any enactment from voting in a Local Government election or otherwise disqualified by law.

Have a minimum of two (2) qualified electors of the City of Maple Ridge complete and sign the form.

If there is uncertainty as to the qualifications of any of the electors signing your nomination documents, you may risk a challenge of your nomination. To avoid this, you could choose to have more than two (2) electors sign your nomination documents (page 2 of Form CS2 has been provided for this purpose). If one or more of your electors is not qualified, your nomination will be valid *as long as it is made by at least the minimum number of qualified electors*.

Sign and date the bottom of page 1 of form CS2 of the nomination documents indicating that you consent to the nomination.

On page 3, indicate the position for which you are running (Mayor or Councillor). Ensure you meet the qualifications listed as items 2 through 8 and indicate in the appropriate checkbox if you are acting as your own Financial Agent or whether you have appointed a Financial Agent and print their name, if applicable.

If you are being endorsed by an Elector Organization, please indicate the name of the Elector Organization in the appropriate box. **The Principle Official of the Elector Organization must sign and date the document.** Elector Organization must be register with Elections BC in order to be recognized on the ballot.

Complete the section to indicate whether you are acting as your own Financial Agent or have appointed one.

You must not consent to endorsement by more than one (1) Elector Organization in an election for the same office.



Important! You must sign the declaration on page 3 of Form CS2 in front of:

- **The Chief Election Officer or designate** at the time of filing the nomination documents or:
- **A lawyer, notary, or Commissioner for Taking Affidavits** for British Columbia (there may be a charge for this service)

Other Information Provided by Candidate (Form CS3)

Complete the boxes as appropriate.

Provision of the residential address of candidates on nomination documents is a requirement of the *Local Government Act* (section 87(1)(d)). If there is an additional address at which you would like to receive candidate information/correspondence, please indicate the additional address in the appropriate box(es).

Appointment of Candidate Financial Agent Form (Form CS4) - optional

If you are acting as your own Financial Agent, you do not need to submit this form. If you are appointing a Financial Agent, complete the boxes as appropriate. **Ensure both you and your Financial Agent sign and date the form.**

Note: If you choose to appoint a Financial Agent after you have already submitted your nomination papers, please submit the form to the election office as soon as practicable after the appointment has been made.

Appointment of Candidate Official Agent Form (Form CS5) - optional

You do not need to appoint an official agent. You may **choose** to appoint an official agent to act on your behalf throughout the election process. Complete the boxes as appropriate to appoint your official agent. Ensure you sign and date the form and submit to the Election Office as soon as practicable after the appointment has been made.

Important! Candidate representatives must carry copies of their appointment papers whenever they represent you at an election proceeding.

Should you wish to change/rescind an appointment, simply advise the Chief Election Officer in writing and submit a new application form.



Appointment of Candidate Scrutineer Form (Form CS6) - optional

This form is optional. It does not get submitted with your nomination documents.

Instead, if you are appointing scrutineers, they must bring the completed form with them to the voting location. They must present it to the Presiding Election Official as soon as they arrive in order to be allowed at the voting place. You may appoint as many scrutineers as you like; however, you are only permitted to have one scrutineer at a time per ballot box in use at a voting place (one per voting place). Fill out and sign a separate form for each scrutineer you appoint.

Scrutineers may observe proceedings but may not interfere with the voting process.

INSTRUCTIONS FOR COMPLETION OF THE STATEMENT OF DISCLOSURE

Under the British Columbia *Financial Disclosure Act*, candidates for the position of Mayor, Councillor and School Trustee must complete and file a Statement of Disclosure form (Tab 1) with their nomination documents.

The Statement of Disclosure is *different* from the Campaign Financing Disclosure Statement, which must be filed *after* the election.

Note that Campaign Financing and Advertising Rules are the jurisdiction of Elections BC and not the local Chief Election Officer.

Please be sure to complete each section of the Disclosure forms, and then sign and date page 3. If you have nothing to add in a section, please put a dash or n/a to indicate you did not miss that section.

If you have questions about the Statement of Financial Disclosure form, Elections BC Staff are available to assist you.

Note that the Statement of Disclosure document will be posted on the City's website, and the forms may also be inspected at the City office. The candidates address will be redacted.



INSTRUCTIONS FOR COMPLETION OF ADDITIONAL DOCUMENTS

Candidate Information Release Authorization Form

This form authorizes the release of your contact information (i.e. phone number, email, etc.). This information is typically sought by the media and/or voters. Print your legal given names and surname on the first line of the appropriate form, indicate the office you are running for (Mayor, Councillor or School Trustee) and complete the appropriate boxes with **only** the additional information you wish to release to the public. Sign and fill out the bottom portion of the form.

INSTRUCTIONS REGARDING LIST OF REGISTERED ELECTORS

Applying for a Copy of the List

Under section 77(8) of the *Local Government Act*, each person who has been nominated may request one copy of the list of registered electors without charge. If you wish to receive a copy of the voters list, a signed Candidate Acknowledgement of Receipt of List of Registered Electors form (Tab 1) must be filed with the Chief Election Officer of the City of Maple Ridge before the list is released to the candidate.

Confidentiality of the List

The list of registered electors contains personal information which, as defined in the *Freedom of Information and Protection of Privacy Act*, is confidential. The list of registered electors is supplied to declared candidates solely for municipal election purposes.

Candidates (or persons accepting the list on behalf of a candidate) are responsible for protecting the confidentiality of the information and for ensuring that all people in their organization who have access to the list do likewise. The list must be stored in a secure manner so that **only authorized individuals** have access to the information.

All persons who have access to the information are individually responsible for protecting the confidentiality of that information.

The candidate's copy of the list of registered electors is **not available for public inspection**. Only authorized individuals in a candidate's office may use the list to assist citizens in determining whether they are on the list and whether their voter information is up to date. Citizens may not directly access the list of registered electors from a candidate to look up information.



As noted on the Candidate Acknowledgement of Receipt of List of Registered Electors, **information in the list of registered electors may not be used, copied, or distributed, in whole or in part by or for any person, in any form whatsoever, except in relation to municipal election purposes.**

Destruction of the List

When no longer required, or within eight weeks of the declaration of final results of the election (whichever date is sooner) all copies of the list of registered electors must be destroyed. For electronic files, a secure deletion of the file must be done to ensure that the file cannot be restored by any means; this includes copies of the file placed on computer hard drives or on back-up storage devices. If you want to return to City for deletion, please return no later than November 27, 2026.

Candidate Profile for City website

Every candidate for Mayor, Councillor and School Trustee will be given the option of submitting profile information to be displayed on the City of Maple Ridge website. Profiles will be posted after the Declaration of Election (4pm on Mon, Sept 21) and remain up until shortly after the election. Profiles must be submitted between Sept 1- 16, 2026. Online submission instructions will appear on the MapleRidge.ca/elections website starting in mid- August.

The profile can include:

- A brief biography
 - Statements must be in English only and a maximum of 150 words. Any text over this limit will not be included. Statements must be confined to information about the candidate, the candidate's policies, and the candidate's intentions if elected. *While we will not edit to correct grammar or spelling, The Chief Election Officer reserves the right to edit profile information to prevent inflammatory or offensive language.*
- A JPEG photo of the candidate (head and shoulders style recommended)
- Contacts and/or social media links of your choice (such as phone number, email, website, Facebook, Instagram, X etc.)

Pictures or write ups not submitted will have a "photo not submitted" or "write up not submitted" note on the candidates page. Only contacts / social media links provided in the profile will be posted on this page.



INFORMATION ABOUT CAMPAIGNING IN THE 2026 LOCAL GENERAL ELECTION

Campaigning and Campaign Advertising

This section contains information to guide your campaigning and campaign advertising activities.

In accordance with the *Local Elections Campaign Financing Act*, for the 2026 General Local Election, the following expense limits apply during the campaign period (September 19, 2026 - October 17, 2026)

Maple Ridge	Mayor	Councillor	School Trustee
Candidates	\$80,115.35	\$40,617.95	\$40,816.70
Third Party Advertising	\$4,005.77	\$4,005.77	\$2,515.08

Third Party Sponsors are individuals or organizations that undertake election advertising independent from a candidate or elector organization campaign but do not contribute directly to a candidate's campaign. Third party sponsors are subject to regulation under the *Local Elections Campaign Financing Act*. If you are aware of third parties that want to campaign on your behalf (i.e. take out advertisements, run radio announcements, etc.) please advise them to contact Elections BC to ensure compliance.

Two important advertising restrictions to note are:

1. No election advertising (including signs) of any kind may appear within 100 metres of a building where voting is underway (diagrams showing the 100-metre perimeter around voting places are included in Tab 2 for reference); and
2. No individual or organization can transmit (or sponsor) advertising to the public on general voting day October 17, 2026 (*LECFA* Sect 45)

For exact City of Maple Ridge boundaries please see the City of Maple Ridge website

[*Ridgeview program*](#)

Elections BC is responsible for legislation concerning Campaign Advertising (Tab 3).



Election Signage

The City of Maple Ridge regulates election signage within municipal boundaries, as stated in *Election Bylaw 8096-2026*. ([Maple Ridge Election Procedures Bylaw No.8096-2026](#))

Signs may be erected starting 28 days before the election (Sept 19) and must be removed within four days after the election (Oct 21). You may place election signs on private property with the permission of the owner. Please refer to the bylaw for specific details regarding allowable size and location restrictions

Election Signs are also not allowed on:

- On Translink property (i.e. Golden Ears Way)
- On School District 42 grounds (No political signs or activities)

A reminder that the Section 44 of the *Local Elections Campaign Financing Act* (The “Act”) requires all advertising including campaign signs include the phrase “**authorized by**”, **the financial agent’s name and contact info** (a BC phone number, email address or mailing address). Please refer to the Act for specific details.

City of Maple Ridge Political Activity Policy

Policy 3.18 sets out provisions and a conduct framework for Candidates, Elected Officials, Third Party Advertisers, Interested Parties, and City Staff for the use of City Facilities and City Resources during Elections in order to maintain the City’s political neutrality.

Please refer to the Policy for guidelines on things such as the use of City Facilities for campaigning, use of City branding, equal access to information and other such topics.



INFORMATION ON THE CAMPAIGN FINANCING DISCLOSURE STATEMENTS IN THE 2026 LOCAL GENERAL ELECTION

Campaign Financing Disclosure Statements required in accordance with the *Local Elections Campaign Financing Act* must be filed with Elections BC no more than 90 days after the election (January 15, 2027).

Standardized forms for this purpose will be sent to all participants by Elections BC and will also be available on the Elections BC website.

All aspects of campaign financing are administered by Elections BC and all questions and inquiries should be referred to them

You can also find information in the Guide to Local Elections Campaign Financing in BC on the [Election BC website](#) – it is also available on Tab 3. If you have any questions regarding campaign finances or the filing of the statement, please contact Elections BC.

Important! Failure to file a complete campaign financing disclosure statement or supplementary report may lead to penalties, up to and including disqualification from holding office until after the next general local election.

Your Campaign Financing Disclosure Statement and any supplementary reports will be available for public inspection from the time they are filed at the Elections BC office and on the Elections BC website for at least five (5) years.

Section 18 of the *Local Elections Campaign Financing Act* requires that a separate bank account in the name of the campaign be opened, and that all contributions and expenses flow through that account.



TAB 1 - Candidate Nomination Package

***To be submitted to Chief Election Officer during the nomination
period***

September 1, 2026 at 9:00 a.m. to

September 11, 2026, by 4:00 p.m.

Nomination Documents (Forms CS1-CS6)

Statement of Disclosure

Candidate Information Release Form

Optional Forms

Request for Copy of List of Registered Electors

Candidate Bio (submit electronically after filing, due by Sept 18)

TAB 2 - City of Maple Ridge & SD42 Reference Material

Notice of Nomination

100 metre Radius Maps for Election Signage

City of Maple Ridge Reference Material Available Online

City of Maple Ridge Political Activity Policy No. 3.18 ([Link](#))

Maple Ridge Election Procedures Bylaw No. 8096-2026 ([Link](#))

Maple Ridge Web Map ([Link](#))

School Trustee Reference Material Available Online

British Columbia School Trustee – Candidate Guide ([Link](#))

School Trustee Election Procedure in British Columbia ([Link](#))

Maple Ridge – Pitt Meadows School District No. 42 Trustee Elections 2026 ([Link](#))

*Maple Ridge – Pitt Meadows School District No. 42 Local School
Trustee Elections 2026 ([Link](#))*

TAB 3 - Additional Reference Material

Additional Reference Material available online

Elections BC – Handbook for Local Candidates ([Link](#))

Elections BC – What to know before you start campaigning ([Link](#))

Elections BC – Online Learning ([Link](#))

Province of BC – What Every Candidate Needs to Know ([Link](#))

Province of BC - Thinking About Running for Local Office ([Link](#))

Voter’s Guide to Local Elections in B.C. ([Link](#))

Local Government in BC – A Community Effort ([Link](#))

Excerpts from the Local Government Act ([Link](#))

List of Disqualified Candidates ([Link](#))

Guide to Local Election Campaign Financing in BC (Elections BC) ([Link](#))

Financial Disclosure Act ([Link](#))

Local Elections Campaign Financing Act ([Link](#))

Province of BC – General Local Elections ([Link](#))

External Agency Contact information

Elections BC

elections.bc.ca

1-800-661-8683

electionsbc@elections.bc.ca

Links

CITY OF MAPLE RIDGE

City of Maple Ridge – Ridgeview Web Map

<https://apps.vertigisstudio.com/web/?app=58c7b2da978d47cca53f48a5492ad9e2>

Elections Procedures Bylaw No. 8096-2026

<https://www.mapleridge.ca/media/file/8096-2026-maple-ridge-election-procedures-bylaw-no-8096-2026pdf>

City of Maple Ridge Political Activity Policy No. 3.18

<https://www.mapleridge.ca/media/file/political-activity-policy-318>

SCHOOL TRUSTEE LINKS

British Columbia School Trustee – Candidate Guide

<https://bcsta.org/wp-content/uploads/BCSTA-CandidatesGuide-2026-Final-3.31.2026.pdf>

School Trustee Election Procedure in British Columbia

https://www2.gov.bc.ca/assets/gov/education/administration/legislation-policy/legislation/schooltrustee/school_trustee_election_procedures.pdf

Maple Ridge – Pitt Meadows School District No. 42 Trustee Elections 2026

<https://www.sd42.ca/assets/media/Local-Elections-2026.pdf>

Maple Ridge – Pitt Meadows School District No. 42 Local School Trustee Elections 2026

<https://www.sd42.ca/local-elections/>

ELECTIONS BC

Guide to Local Election Campaign Financing in B. C. (Elections BC)

<https://elections.bc.ca/docs/lecfa/guide-to-local-elections-campaign-financing-in-bc-for-candidates-and-their-financial-agents.pdf>

Financial Disclosure Act

https://www.bclaws.gov.bc.ca/civix/document/id/complete/statreg/96139_01

Local Elections Campaign Financing Act

<https://www.bclaws.gov.bc.ca/civix/document/id/complete/statreg/14018#section18>

Elections BC – What to know before you start campaigning

<https://elections.bc.ca/docs/lecfa/local-candidate-quick-reference-sheet.pdf>

List of Disqualified Candidates

<https://elections.bc.ca/local-elections/disqualification-lists/>

Online Learning

<https://elections.bc.ca/local-elections/online-learning/>



PROVINCE OF BC

Province of BC – General Local Elections

<https://www2.gov.bc.ca/gov/content/governments/local-governments/governance-powers/general-local-elections>

Elections BC – Handbook for Local Candidates

<https://elections.bc.ca/wp-content/uploads/2026/03/451001-Candidate-Handbook.pdf>

Province of BC – What Every Candidate Needs to Know

https://www2.gov.bc.ca/assets/gov/british-columbians-our-governments/local-governments/governance-powers/what_every_candidate_needs_know.pdf

Province of BC - Thinking About Running for Local Office

https://www2.gov.bc.ca/assets/gov/british-columbians-our-governments/local-governments/governance-powers/thinking_about_running_local_office.pdf

Voter's Guide to Local Elections in B.C.

https://www2.gov.bc.ca/assets/gov/british-columbians-our-governments/local-governments/governance-powers/voter_guide_english.pdf

Local Government in BC – A Community Effort

https://www.ubcm.ca/sites/default/files/2021-05/2015_CommunityEffortBooklet.pdf

Excerpts from the Local Government Act

https://www.bclaws.gov.bc.ca/civix/document/id/complete/statreg/r15001_00



CANDIDATE NOMINATION PACKAGE – SCHOOL TRUSTEE

IMPORTANT: The following forms are for candidates in school trustee elections. A separate set of forms are available for regional trustee candidates in School District No. 93 (Conseil scolaire francophone).

Use the Candidate Cover Sheet and Checklist Form CS1 to ensure that the Candidate Nomination Package – School Trustee is complete and meets the legislative requirements of the *School Act*, *Local Government Act*, *Local Elections Campaign Financing Act*, *Financial Disclosure Act* and/or *Vancouver Charter*.

The Candidate Cover Sheet and Checklist Form CS1 serve as a guide to the forms that must be submitted by a Candidate, their Official Agent and/or their Financial Agent to the Chief Election Officer as part of the nomination process.

Ensure that, for each item checked off on the Checklist Form CS1 (Section B), the relevant form is completed and attached.

NOTE: Candidate Nomination documents can be submitted to the Chief Election Officer in-person, by mail, by fax or by email. School district contact information is available online at: <https://bcschoolcontacts.gov.bc.ca> and local government contact information is available online at: <https://www/civinfo.bc.ca/directories>

The Candidate Cover Sheet and Checklist Form CS1 are for the Chief Election Officer's reference only and do not constitute part of the Candidate Nomination Package – School Trustee.

Completing only the Candidate Cover Sheet and Checklist Form CS1 **does not** constitute completion of the Candidate Nomination Package – School Trustee, nor does it satisfy the legislative requirements set out in the *School Act*, *Local Government Act*, *Local Elections Campaign Financing Act*, *Financial Disclosure Act* and/or *Vancouver Charter*.

COMPLETION INSTRUCTIONS:

1. Record the Candidate's full name.
2. Use section B of the Candidate Cover Sheet and Checklist Form CS1 to identify which forms have been completed and are included in the Candidate Nomination Package – School Trustee.
3. Return the completed package to the Chief Election Officer.

As per *Local Elections Campaign Financing Act* requirements, the following forms will be forwarded to Elections BC by the Chief Election Officer:

- CS2 – Nomination Documents (only page 3);
- CS3 – Other Information Provided by Candidate; and,
- CS4 – Appointment of Candidate Financial Agent.

After election results have been declared, please send any changes to documents previously provided to Elections BC to:

Elections BC
PO Box 9275 Stn Prov Govt
Victoria BC V8W 9J6
Toll-free fax: 1-866-466-0665
Email: electoral.finance@elections.bc.ca

CS1 – Candidate Cover Sheet and Checklist Form

PLEASE PRINT IN BLOCK LETTERS

SECTION A

CANDIDATE'S LAST NAME	FIRST NAME	MIDDLE NAME(S)
NAME OF OFFICE FOR WHICH CANDIDATE IS SEEKING ELECTION BOARD OF EDUCATION TRUSTEE		

SECTION B

This information package includes the following completed forms, appointments, consents and declarations:

- CS2 – Nomination Documents**
- CS3 – Other Information Provided by Candidate**
- CS4 – Appointment of Candidate Financial Agent** (if Candidate is not acting as own Financial Agent)
- CS5 – Appointment of Candidate Official Agent** (if applicable)
- CS6 – Appointment of Candidate Scrutineer** (if applicable)
- Statement of Disclosure: *Financial Disclosure Act*** (required under the *Financial Disclosure Act*)

Disclaimer: All attempts have been made to ensure the accuracy of the forms contained in the Candidate Nomination Package – School Trustee; however, the forms are not a substitute for provincial legislation and/or regulations.

Please refer directly to the latest consolidation of provincial statutes at BC Laws (www.bclaws.ca) for applicable election-related provisions and requirements.

CS2 - Nomination Documents

PLEASE PRINT IN BLOCK LETTERS

JURISDICTION (NAME OF SCHOOL DISTRICT)		TRUSTEE ELECTORAL AREA (TEA NUMBER OR AT LARGE)
We, the following electors of the above-named jurisdiction, hereby nominate:		
NOMINEE'S LAST NAME	FIRST NAME	MIDDLE NAME(S)
USUAL NAME OF PERSON NOMINATED IF DIFFERENT FROM ABOVE AND PREFERRED BY THE PERSON NOMINATED TO APPEAR ON THE BALLOT		
RESIDENTIAL ADDRESS (STREET ADDRESS)	CITY/TOWN	POSTAL CODE
MAILING ADDRESS IF DIFFERENT FROM RESIDENTIAL ADDRESS (STREET ADDRESS/PO BOX NUMBER)	CITY/TOWN	POSTAL CODE
As a Candidate for the office of:		
POSITION BOARD OF EDUCATION TRUSTEE	JURISDICTION (NAME OF SCHOOL DISTRICT)	TRUSTEE ELECTORAL AREA (TEA NUMBER OR AT LARGE)

Each of us **affirms** that to the best of our knowledge, the above-named person nominated for office:

1. Is or will be on general voting day for the election, 18 years of age or older.
2. Is a Canadian citizen.
3. Has been a resident of British Columbia, as determined in accordance with section 42 of the *School Act*, for at least six months immediately preceding today's date.
4. Is not disqualified under the *School Act* or any other enactment from being nominated for, being elected to or holding office as a trustee, or be otherwise disqualified by law.

A nominator MUST be a qualified elector of the trustee electoral area where the candidate is running. Elector qualifications are listed in section 40 and 41 of the *School Act*.

NOMINATOR'S NAME (FIRST, MIDDLE AND LAST NAMES)	NOMINATOR'S NAME (FIRST, MIDDLE AND LAST NAMES)
RESIDENTIAL ADDRESS (CITY/TOWN, STREET ADDRESS, POSTAL CODE) IF NOMINATING AS A RESIDENT ELECTOR	RESIDENTIAL ADDRESS (CITY/TOWN, STREET ADDRESS, POSTAL CODE) IF NOMINATING AS A RESIDENT ELECTOR
PROPERTY ADDRESS (CITY/TOWN, STREET ADDRESS, POSTAL CODE) IF NOMINATING AS A NON-RESIDENT PROPERTY ELECTOR	PROPERTY ADDRESS (CITY/TOWN, STREET ADDRESS, POSTAL CODE) IF NOMINATING AS A NON-RESIDENT PROPERTY ELECTOR
<input type="checkbox"/> BY CHECKING THIS BOX YOU CONFIRM THAT YOU ARE A QUALIFIED ELECTOR IN THE JURISDICTION THE CANDIDATE IS RUNNING FOR OFFICE	<input type="checkbox"/> BY CHECKING THIS BOX YOU CONFIRM THAT YOU ARE A QUALIFIED ELECTOR IN THE JURISDICTION THE CANDIDATE IS RUNNING FOR OFFICE
NOMINATOR'S SIGNATURE	NOMINATOR'S SIGNATURE

Please see over for additional space when more than two nominators are required. Copies can be made as needed.

I consent to the above nomination for office:	
NOMINEE'S SIGNATURE	DATE: (YYYY/MM/DD)

CANDIDATE NOMINATION PACKAGE – SCHOOL TRUSTEE

Each of us **affirms** that to the best of our knowledge, the above-named person nominated for office:

1. Is or will be on general voting day for the election, 18 years of age or older.
2. Is a Canadian citizen.
3. Has been a resident of British Columbia, as determined in accordance with section 42 of the *School Act*, for at least six months immediately preceding today's date.
4. Is not disqualified under the *School Act* or any other enactment from being nominated for, being elected to or holding office as a trustee, or be otherwise disqualified by law.

**A nominator MUST be a qualified elector of the trustee electoral area where the candidate is running.
Elector qualifications are listed in section 40 and 41 of the *School Act*.**

NOMINATOR'S NAME (FIRST, MIDDLE AND LAST NAMES)	NOMINATOR'S NAME (FIRST, MIDDLE AND LAST NAMES)
RESIDENTIAL ADDRESS (CITY/TOWN, STREET ADDRESS, POSTAL CODE) IF NOMINATING AS A RESIDENT ELECTOR	RESIDENTIAL ADDRESS (CITY/TOWN, STREET ADDRESS, POSTAL CODE) IF NOMINATING AS A RESIDENT ELECTOR
PROPERTY ADDRESS (CITY/TOWN, STREET ADDRESS, POSTAL CODE) IF NOMINATING AS A NON-RESIDENT PROPERTY ELECTOR	PROPERTY ADDRESS (CITY/TOWN, STREET ADDRESS, POSTAL CODE) IF NOMINATING AS A NON-RESIDENT PROPERTY ELECTOR
<input type="checkbox"/> BY CHECKING THIS BOX YOU CONFIRM THAT YOU ARE A QUALIFIED ELECTOR IN THE JURISDICTION THE CANDIDATE IS RUNNING FOR OFFICE	<input type="checkbox"/> BY CHECKING THIS BOX YOU CONFIRM THAT YOU ARE A QUALIFIED ELECTOR IN THE JURISDICTION THE CANDIDATE IS RUNNING FOR OFFICE
NOMINATOR'S SIGNATURE	NOMINATOR'S SIGNATURE

NOMINATOR'S NAME (FIRST, MIDDLE AND LAST NAMES)	NOMINATOR'S NAME (FIRST, MIDDLE AND LAST NAMES)
RESIDENTIAL ADDRESS (CITY/TOWN, STREET ADDRESS, POSTAL CODE) IF NOMINATING AS A RESIDENT ELECTOR	RESIDENTIAL ADDRESS (CITY/TOWN, STREET ADDRESS, POSTAL CODE) IF NOMINATING AS A RESIDENT ELECTOR
PROPERTY ADDRESS (CITY/TOWN, STREET ADDRESS, POSTAL CODE) IF NOMINATING AS A NON-RESIDENT PROPERTY ELECTOR	PROPERTY ADDRESS (CITY/TOWN, STREET ADDRESS, POSTAL CODE) IF NOMINATING AS A NON-RESIDENT PROPERTY ELECTOR
<input type="checkbox"/> BY CHECKING THIS BOX YOU CONFIRM THAT YOU ARE A QUALIFIED ELECTOR IN THE JURISDICTION THE CANDIDATE IS RUNNING FOR OFFICE	<input type="checkbox"/> BY CHECKING THIS BOX YOU CONFIRM THAT YOU ARE A QUALIFIED ELECTOR IN THE JURISDICTION THE CANDIDATE IS RUNNING FOR OFFICE
NOMINATOR'S SIGNATURE	NOMINATOR'S SIGNATURE

NOMINATOR'S NAME (FIRST, MIDDLE AND LAST NAMES)	NOMINATOR'S NAME (FIRST, MIDDLE AND LAST NAMES)
RESIDENTIAL ADDRESS (CITY/TOWN, STREET ADDRESS, POSTAL CODE) IF NOMINATING AS A RESIDENT ELECTOR	RESIDENTIAL ADDRESS (CITY/TOWN, STREET ADDRESS, POSTAL CODE) IF NOMINATING AS A RESIDENT ELECTOR
PROPERTY ADDRESS (CITY/TOWN, STREET ADDRESS, POSTAL CODE) IF NOMINATING AS A NON-RESIDENT PROPERTY ELECTOR	PROPERTY ADDRESS (CITY/TOWN, STREET ADDRESS, POSTAL CODE) IF NOMINATING AS A NON-RESIDENT PROPERTY ELECTOR
<input type="checkbox"/> BY CHECKING THIS BOX YOU CONFIRM THAT YOU ARE A QUALIFIED ELECTOR IN THE JURISDICTION THE CANDIDATE IS RUNNING FOR OFFICE	<input type="checkbox"/> BY CHECKING THIS BOX YOU CONFIRM THAT YOU ARE A QUALIFIED ELECTOR IN THE JURISDICTION THE CANDIDATE IS RUNNING FOR OFFICE
NOMINATOR'S SIGNATURE	NOMINATOR'S SIGNATURE

CS2 - Nomination Documents

PLEASE PRINT IN BLOCK LETTERS

I do solemnly declare as follows:

1. I am qualified under section 32 of the *School Act* to be nominated, elected and to hold the office of:

POSITION

BOARD OF EDUCATION TRUSTEE

2. I am or will be on general voting day for the election, 18 years of age or older.
3. I am a Canadian citizen.
4. I have been a resident of British Columbia, as determined in accordance with section 42 of the *School Act*, for the past six months immediately preceding today's date.
5. I am not disqualified by the *School Act* or any other enactment from being nominated for, being elected to or holding office as a trustee, or otherwise disqualified by law.
6. To the best of my knowledge, the information provided in these nomination documents is true.
7. I fully intend to accept the office if elected.
8. I am aware of and understand the requirements and restrictions of the *Local Elections Campaign Financing Act* and intend to fully comply with those requirements and restrictions.

NOMINEE'S SIGNATURE

DECLARED BEFORE ME: CHIEF ELECTION OFFICER OR COMMISSIONER FOR TAKING AFFIDAVITS FOR BRITISH COLUMBIA

AT: (LOCATION)

DATE: (YYYY/MM/DD)

I am acting as my own Financial Agent

NOMINEE'S SIGNATURE

I have appointed as my Financial Agent

FINANCIAL AGENT'S NAME (IF APPLICABLE)

ELECTOR ORGANIZATION CANDIDATE ENDORSEMENT AND CONSENT

NAME OF ELECTOR ORGANIZATION (AS REGISTERED WITH ELECTIONS BC):

PRINCIPLE OFFICIAL'S LAST NAME

FIRST NAME

MIDDLE NAME(S)

The above-named Elector Organization Agrees to Endorse:

CANDIDATE'S LAST NAME

FIRST NAME

MIDDLE NAME(S)

PRINCIPLE OFFICIAL'S SIGNATURE

DATE: (YYYY/MM/DD)

I consent to the endorsement by the above-named Elector Organization

CANDIDATE'S SIGNATURE

DATE: (YYYY/MM/DD)

CS3 - Other Information Provided by Candidate

PLEASE PRINT IN BLOCK LETTERS

Office for which individual is a nominee:

POSITION BOARD OF EDUCATION TRUSTEE	JURISDICTION (NAME OF SCHOOL DISTRICT)	TRUSTEE ELECTORAL AREA (TEA NUMBER OR AT LARGE)
NOMINEE'S LAST NAME	FIRST NAME	MIDDLE NAME(S)
USUAL NAME OF PERSON NOMINATED IF DIFFERENT FROM ABOVE AND PREFERRED BY THE PERSON NOMINATED TO APPEAR ON THE BALLOT		
MAILING ADDRESS (STREET ADDRESS/PO BOX NUMBER) AS PROVIDED IN THE NOMINATION DOCUMENTS	CITY/TOWN	POSTAL CODE
ADDRESS FOR SERVICE (STREET ADDRESS OR EMAIL ADDRESS)	CITY/TOWN	POSTAL CODE
TELEPHONE NUMBER	EMAIL ADDRESS (IF AVAILABLE)	

Additional Addresses for Service Information

OPTIONAL

MAILING ADDRESS (STREET ADDRESS/PO BOX NUMBER) IF EMAIL WAS PROVIDED AS ADDRESS FOR SERVICE	CITY/TOWN	POSTAL CODE
FAX NUMBER	EMAIL ADDRESS IF MAILING ADDRESS WAS PROVIDED AS ADDRESS FOR SERVICE	

Please ensure that name and mailing address information is the same as that entered on FORM CS2 - NOMINATION DOCUMENTS

CS4 - Appointment of Candidate Financial Agent

PLEASE PRINT IN BLOCK LETTERS

CANDIDATE'S LAST NAME	FIRST NAME	MIDDLE NAME(S)
POSITION BOARD OF EDUCATION TRUSTEE	JURISDICTION (NAME OF SCHOOL DISTRICT)	TRUSTEE ELECTORAL AREA (TEA NUMBER OR AT LARGE)
I hereby appoint as my Financial Agent for the:		
GENERAL VOTING DATE: (YYYY/MM/DD)	<input type="checkbox"/> General Local Election	<input type="checkbox"/> By-election
FINANCIAL AGENT'S LAST NAME	FIRST NAME	MIDDLE NAME(S)
MAILING ADDRESS (STREET ADDRESS/PO BOX NUMBER)	CITY/TOWN	POSTAL CODE
TELEPHONE NUMBER	EMAIL ADDRESS (IF AVAILABLE)	
EFFECTIVE DATE OF APPOINTMENT: (YYYY/MM/DD)		
CANDIDATE'S SIGNATURE	DATE: (YYYY/MM/DD)	

I hereby consent to act as the Financial Agent for the above-named Candidate for the:		
GENERAL VOTING DATE: (YYYY/MM/DD)	<input type="checkbox"/> General Local Election	<input type="checkbox"/> By-election
FINANCIAL AGENT ADDRESS FOR SERVICE (STREET ADDRESS OR EMAIL ADDRESS)	CITY/TOWN	POSTAL CODE
Additional Addresses for Service Information		OPTIONAL
MAILING ADDRESS (STREET ADDRESS/PO BOX NUMBER) IF EMAIL WAS PROVIDED AS ADDRESS FOR SERVICE	CITY/TOWN	POSTAL CODE
FAX NUMBER	EMAIL ADDRESS IF MAILING ADDRESS WAS PROVIDED AS ADDRESS FOR SERVICE	
FINANCIAL AGENT'S SIGNATURE	DATE: (YYYY/MM/DD)	

CS5 - Appointment of Candidate Official Agent

PLEASE PRINT IN BLOCK LETTERS

CANDIDATE'S LAST NAME	FIRST NAME	MIDDLE NAME(S)
POSITION BOARD OF EDUCATION TRUSTEE	JURISDICTION (NAME OF SCHOOL DISTRICT)	TRUSTEE ELECTORAL AREA (TEA NUMBER OR AT LARGE)
I hereby appoint as my Official Agent for the:		
GENERAL VOTING DATE: (YYYY/MM/DD)	<input type="checkbox"/> General Local Election	<input type="checkbox"/> By-election
OFFICIAL AGENT'S LAST NAME	FIRST NAME	MIDDLE NAME(S)
MAILING ADDRESS (STREET ADDRESS/PO BOX NUMBER)	CITY/TOWN	POSTAL CODE
<input type="checkbox"/> I hereby delegate to the above-named official agent the authority to appoint scrutineers.		
CANDIDATE'S SIGNATURE	DATE: (YYYY/MM/DD)	

CS6 - Appointment of Candidate Scrutineer

PLEASE PRINT IN BLOCK LETTERS

CANDIDATE'S LAST NAME	FIRST NAME	MIDDLE NAME(S)
POSITION BOARD OF EDUCATION TRUSTEE	JURISDICTION (NAME OF SCHOOL DISTRICT)	TRUSTEE ELECTORAL AREA (TEA NUMBER OR AT LARGE)
I hereby appoint as my Scrutineer for the:		
GENERAL VOTING DATE: (YYYY/MM/DD)	<input type="checkbox"/> General Local Election	<input type="checkbox"/> By-election
SCRUTINEER'S LAST NAME	FIRST NAME	MIDDLE NAME(S)
MAILING ADDRESS (STREET ADDRESS/PO BOX NUMBER)	CITY/TOWN	POSTAL CODE
CANDIDATE'S SIGNATURE	DATE: (YYYY/MM/DD)	

You must complete a Statement of Disclosure form if you are:

- a nominee for election to provincial or local government office*, as a school trustee or as a director of a francophone education authority
- an elected local government official
- an elected school trustee, or a director of a francophone education authority
- an employee designated by a local government, a francophone education authority or the board of a school district
- a public employee designated by the Lieutenant Governor in Council

*("local government" includes municipalities, regional districts and the Islands Trust)

Who has access to the information on this form?

The *Financial Disclosure Act* requires you to disclose assets, liabilities and sources of income. Under section 6 (1) of *the Act*, statements of disclosure filed by nominees or municipal officials are available for public inspection during normal business hours. Statements filed by designated employees are not routinely available for public inspection. If you have questions about this form, please contact your solicitor or your political party's legal counsel.

What is a trustee? – s. 5 (2)

In the following questions the term "trustee" does not mean school trustee or Islands Trust trustee. Under the *Financial Disclosure Act* a trustee:

- holds a share in a corporation or an interest in land for your benefit, or is liable under the *Income Tax Act* (Canada) to pay income tax on income received on the share or land interest
- has an agreement entitling him or her to acquire an interest in land for your benefit

Person making disclosure:	<input type="text" value="last name"/>	<input type="text" value="first & middle name(s)"/>
Street, rural route, post office box:	<input type="text"/>	
City:	<input type="text"/>	Province: <input type="text"/>
		Postal Code: <input type="text"/>
Level of government that applies to you:	<input type="radio"/> provincial <input type="radio"/> local government <input type="radio"/> school board/francophone education authority	

If sections do not provide enough space, attach a separate sheet to continue.

Assets – s. 3 (a)

List the name of each corporation in which you hold one or more shares, including shares held by a trustee on your behalf:

Liabilities – s. 3 (e)

List all creditors to whom you owe a debt. Do not include residential property debt (mortgage, lease or agreement for sale), money borrowed for household or personal living expenses, or any assets you hold in trust for another person:

creditor's name(s)

creditor's address(es)

Income – s. 3 (b-d)

List each of the businesses and organizations from which you receive financial remuneration for your services and identify your capacity as owner, part-owner, employee, trustee, partner or other (e.g. director of a company or society).

- Provincial nominees and designated employees must list all sources of income in the province.
- Local government officials, school board officials, francophone education authority directors and designated employees must list only income sources within the regional district that includes the municipality, local trust area or school district for which the official is elected or nominated, or where the employee holds the designated position.

your capacity

name(s) of business(es)/organization(s)

Real Property – s. 3 (f)

List the legal description and address of all land in which you, or a trustee acting on your behalf, own an interest or have an agreement which entitles you to obtain an interest. Do not include your personal residence.

- Provincial nominees and designated employees must list all applicable land holdings in the province.
- Local government officials, school board officials, francophone education authority directors and designated employees must list only applicable land holdings within the regional district that includes the municipality, local trust area or school district for which the official is elected or nominated, or where the employee holds the designated position.

legal description(s)

address(es)

Corporate Assets – s. 5

Do you individually, or together with your spouse, child, brother, sister, mother or father, own shares in a corporation which total more than 30% of votes for electing directors? (Include shares held by a trustee on your behalf, but not shares you hold by way of security.)

no yes

If yes, please list the following information below & continue on a separate sheet as necessary:

- the name of each corporation and all of its subsidiaries
- in general terms, the type of business the corporation and its subsidiaries normally conduct
- a description and address of land in which the corporation, its subsidiaries or a trustee acting for the corporation, own an interest, or have an agreement entitling any of them to acquire an interest
- a list of creditors of the corporation, including its subsidiaries. You need not include debts of less than \$5,000 payable in 90 days
- a list of any other corporations in which the corporation, including its subsidiaries or trustees acting for them, holds one or more shares.

_____ *signature of person making disclosure*

_____ *date*

Where to send this completed disclosure form:

Local government officials:

... to your local chief election officer

- with your nomination papers, and

... to the officer responsible for corporate administration

- between the 1st and 15th of January of each year you hold office, and
- by the 15th of the month after you leave office

School board trustees/Francophone Education Authority directors:

... to the secretary treasurer or chief executive officer of the authority

- with your nomination papers, and
- between the 1st and 15th of January of each year you hold office, and
- by the 15th of the month after you leave office

Nominees for provincial office:

- with your nomination papers. If elected you will be advised of further disclosure requirements under the *Members' Conflict of Interest Act*

Designated Employees:

... to the appropriate disclosure clerk (local government officer responsible for corporate administration, secretary treasurer, or Clerk of the Legislative Assembly)

- by the 15th of the month you become a designated employee, and
- between the 1st and 15th of January of each year you are employed, and
- by the 15th of the month after you leave your position

**CITY OF MAPLE RIDGE
 2026 GENERAL LOCAL ELECTIONS
 CANDIDATE INFORMATION RELEASE AUTHORIZATION**

Your nomination documents are available to the public to view as soon as they are submitted. Consent provided with this form simply allows the local government to provide additional information, as appearing below, to the public and/or media.

The information you choose to share will be posted on websites operated by CivicInfo BC (www.civicinfo.bc.ca). This is the primary source through which the media, the public, provincial ministries, researchers, and others are able to obtain province-wide local election information.

Note: Changes have been made to election publishing requirements to better protect candidates' personal information, such as their telephone number or address, including a requirement to redact this information in public notices and nomination documents published online. The name of the jurisdiction where the candidate resides will be included in public notices and in online nomination documents.

Electors may view unredacted nomination documents at the local government office; however, an elector must sign a declaration that they will not use the information included in them except for purposes of the Local Government Act, Vancouver Charter, or Local Elections Campaign Financing Act.

I, _____, (please print name of person nominated) having submitted nomination documents for election to the office of _____, give my consent to share the following information. This information may be shared by email, posting on a website, phone, fax, or by any other means of electronic communication.

Address:	
Phone:	Alternate Phone:
Email:	
Website:	
Twitter:	Facebook:

 (Signature of Candidate)

Gender (Check one):

Female Male Non-binary Other/undisclosed

Previous Elected Experience (Check one):

- Incumbent – Served on Council or Board in the same role since the last general election
- Served on Council or Board in a different role since the last general election
- Served on Council or Board before but not during this past term
- No Council or Board experience, but has been elected to office elsewhere (school, local, provincial, or federal).
- None.

City of Maple Ridge

CANDIDATE ACKNOWLEDGEMENT OF RECEIPT OF LIST OF ELECTORS

The list of electors contains personal information as defined in the *Freedom of Information and Protection of Privacy Act* and this information is confidential. The *Local Government Act* provides for significant penalties for the misuse of the list of elector information. Candidates (or a person accepting the list of electors on behalf of a candidate) are responsible for protecting the confidentiality of the list of electors and for ensuring that all people in their organization, on a paid or unpaid basis, (the "Campaign Workers") who have access to the list of electors, do likewise.

The list of electors must be stored in a secure manner, so that only authorized Campaign Workers have access to the information. All persons who have access to the list of electors' information are individually responsible for protecting the confidentiality of that information.

I, the undersigned, acknowledge that:

- I have received a copy of the list of electors;
- The information contained in the list of electors is confidential, is subject to the restrictions of the *Local Government Act*, and is supplied exclusively and solely for election purposes;
- I have an overall responsibility to maintain the security and the confidential nature of the contents of this list;
- *(Include the following only if providing access by voter management software)* I have received access to the list of electors by electronic means and am still responsible for any paper or electronic copies of list of electors that I have generated as a result of that access;
- I understand and accept that the information may **not be used, copied, or distributed**, in whole or in part, by or for any person, in any form whatsoever, except for election purposes;
- I ensure that Campaign Workers will be made aware of the permitted uses for the list of electors and of the confidential nature of this list;
- I will notify the Chief Election Officer as soon as possible after becoming aware if any Campaign Worker has used the list of electors other than for the permitted uses;
- If I provide any Campaign Worker with access to, or a copy of personal information, I will track and retain the following information in a personal information register:

- Date of provision, access or distribution;
 - The number of duplicates of the list of electors;
 - To whom the personal information was provided;
 - How the personal information was provided (e.g., access to database, provision of electronic copy of records, provision of a paper copy of record, etc.)
 - Confirmation that the individual or entity agrees to be bound by the same; and
 - Confirmation of date that the personal information was returned to me;
- In the case of loss or theft or, or unauthorized access, to personal information, I will carry out the following procedures:
 - Contain the breach and identify the source of the breach;
 - Report the loss, theft, or unauthorized access to the Chief Election Officer;
 - Carry out any additional instructions provided by the Chief Election Officer;
 - Retrieve, if possible, all the personal information that was lost,
 - Document the circumstances that led to the incident; and
 - Review processes and procedures to prevent future incidents
- I will ensure that any Campaign Worker with access to, or a copy of personal information has returned the personal information to me after general voting day.
- I will return **all** copies, paper or electronic, of the list of electors to the Chief Election Officer no later than November 27, 2026.

Candidate Name: _____

Official Agent Name (if applicable): _____

Candidate/Agent Signature _____

Declared before me at _____, BC _____

this ____ day of _____, ____.

Chief Election Officer or
Deputy Chief Election Officer

List Provided

Date provided: _____ CEO/DCEO Initials _____

Items Returned

Date returned: _____ CEO/DCEO Initials _____

Candidate Profile

Every candidate will be given the option of submitting candidate profile information for the local government election. The biographies will be posted as they are received, during the candidate nomination period from September 1-18, and displayed until shortly after the election on the City of Maple Ridge website. You will be able to submit your Profile digitally via a link on the [Information For Candidates webpage](#) starting September 1, 2026. Candidates who do not submit a biography or photo will have “Biography not submitted” or “Photo not submitted” displayed on their Candidate Profile page.

Biography Requirements

Your statement must be no more than 150 words, maximum and written in English

Statements must be confined to information about the candidate, the candidate’s policies, and the candidate’s intentions if elected. The Chief Election Officer may remove all or part of a candidate’s profile if they consider it prudent or advisable to do so.

Photographs

Please provide a head-and-shoulders photograph of yourself sized to 1920 x 2400 px (4:5 ratio), portrait orientation (vertical), in JPEG format and no more than 5MB in size.

Links

You may also supply links to your website and/or social media channels. Please provide full urls, and not just handles so that clickable links can be added to your candidate profile page.

Links to redacted versions of your Nomination Documents and your Disclosure papers will also accompany your profile.

Deadline

Deadline for all submissions is 4pm, September 16. If you have any questions or concerns, please contact the Election Office at Election@MapleRidge.ca or call 604-467-7423.



Candidate Profile Form

Lastname, First Name *(as you would like it displayed)*

Candidate for: *(Please enter Mayor, Councillor or School Trustee)*

Instructions: Please fill in this document. Please do not edit the size, font or colour of text. By filling out this form and returning it to us, you are authorizing the City to post this document or its contents on our website for the election period.

Pictures or write ups not submitted will have a “photo not submitted” or “write up not submitted” note on the candidates page.

Candidate biography must be submitted in English, and no more than **150 words**. Overlength submissions will be truncated. Grammar and punctuation will not be corrected.



Head and Shoulders Photo: 4x5”

Please attach a 1920 x 2400 px (4:5 ratio) jpeg photo to your submission.

Website URL: <https://>

Social Media URLs (include up to four): <https://>

Contact info:



City of Maple Ridge
Election Office

11995 Haney Place
Maple Ridge BC V2X 6A9

Election@MapleRidge.ca
604-467-7423

MAPLE RIDGE 2026 GENERAL LOCAL ELECTION

NOTICE OF NOMINATION

Public Notice is given to the electors of Maple Ridge that nominations for the offices of:

Mayor (1 to be elected)
Councillor (6 to be elected)
School Trustee (5 to be elected)
All, four (4) year terms commencing November 2026 to October 2030

will be received by the Chief Election Officer or designate as follows:

From: **9:00 am Tuesday, September 1, 2026**

To: **4:00 pm Friday, September 11, 2026**

at Maple Ridge City Hall,

located at 11995 Haney Place, Maple Ridge, B.C.

during regular office hours (Monday to Friday, 8:00 am to 4:00 pm except statutory holidays)

It is strongly recommended that nominations be submitted in person. However, nominations can be submitted by mail or other delivery services or email at election@mapleridge.ca

Nomination forms are available on the City of Maple Ridge website at www.mapleridge.ca or at Maple Ridge City Hall during regular office hours.

QUALIFICATIONS FOR OFFICE

A person is qualified to be nominated, elected, and to hold office as a member of local government if they meet the following criteria:

- 18 years of age or older;
- Canadian citizen;
- Resident of British Columbia for at least six (6) months immediately before the relevant time;
- Not disqualified by the *Local Government Act* or any other enactment from voting in an election in British Columbia or from being nominated for, being elected to, or holding office, or to otherwise disqualified by law.

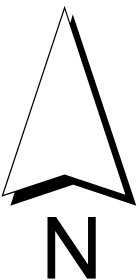
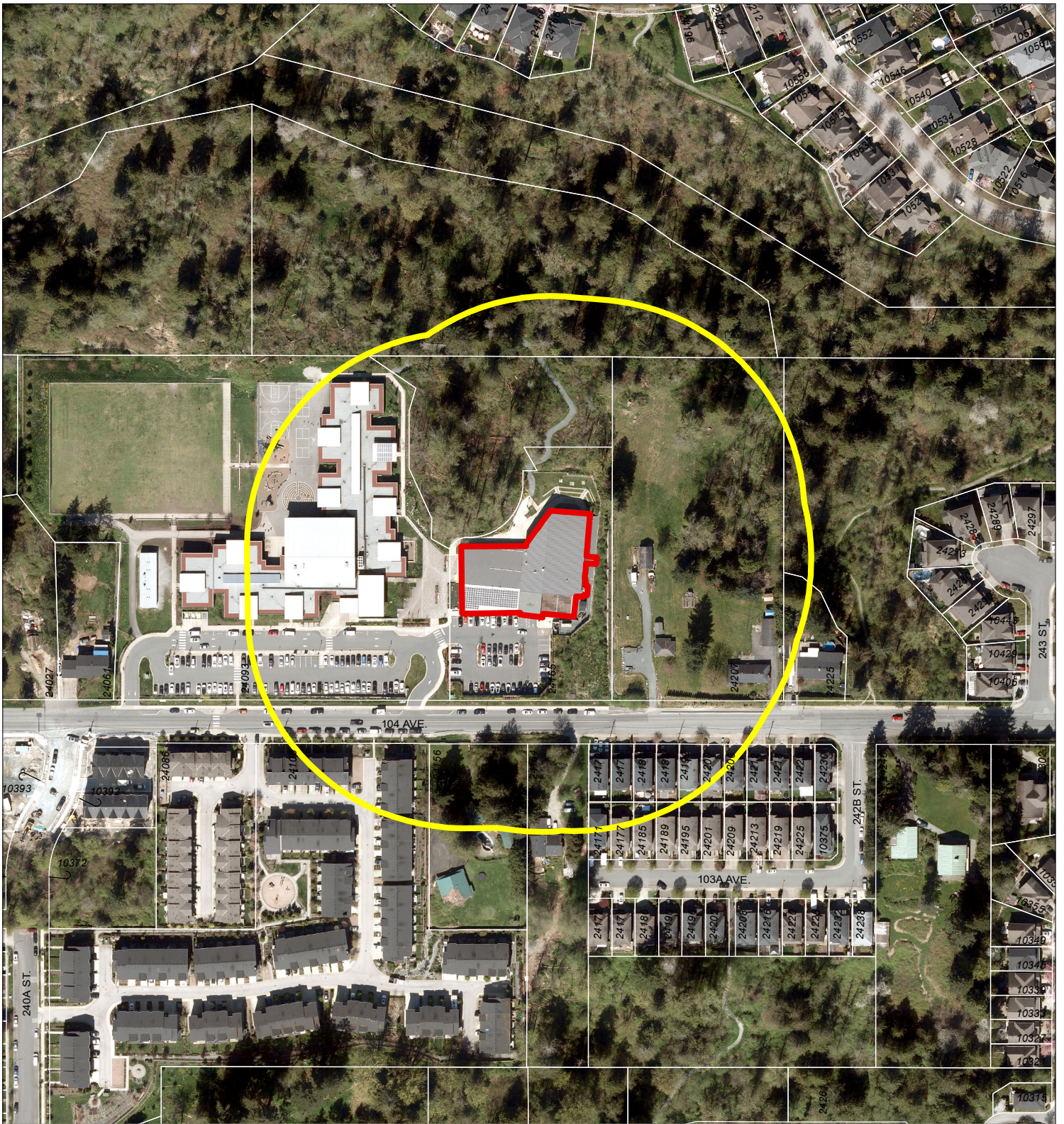
CAMPAIGN PERIOD CANDIDATE and THIRD-PARTY ADVERTISING EXPENSE LIMITS

In accordance with the *Local Elections Campaign Financing Act*, for the 2026 General Local Election, the following expense limits apply during the campaign period (September 19, 2026 - October 17, 2026)

Maple Ridge	Mayor	Councillor	School Trustee
Candidates	\$80,115.35	\$40,617.95	\$40,816.70
Third Party Advertising	\$4,005.77	\$4,005.77	\$2,515.08

For more information on **campaign period expense limits and third-party advertising limits**, please contact Elections BC.:

Phone: 1-800-661-8683 | **Email:** electoral.finance@elections.bc.ca | **Website:** elections.bc.ca



Scale: 1:2,500

Legend

- Voting Location
- 100m Buffer of Voting Location

Albion Community Centre
24165 104 Ave

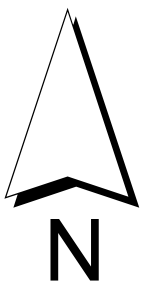
ELECTIONS OFFICE



Maple Ridge

FILE: VotingStations2026.mxd
DATE: Apr 30, 2026

BY: DT



Scale: 1:2,500

Legend



Voting Location



100m Buffer of Voting Location

Fraserview Village Hall
22538 116 Ave

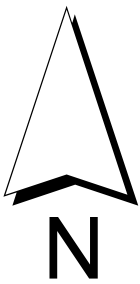
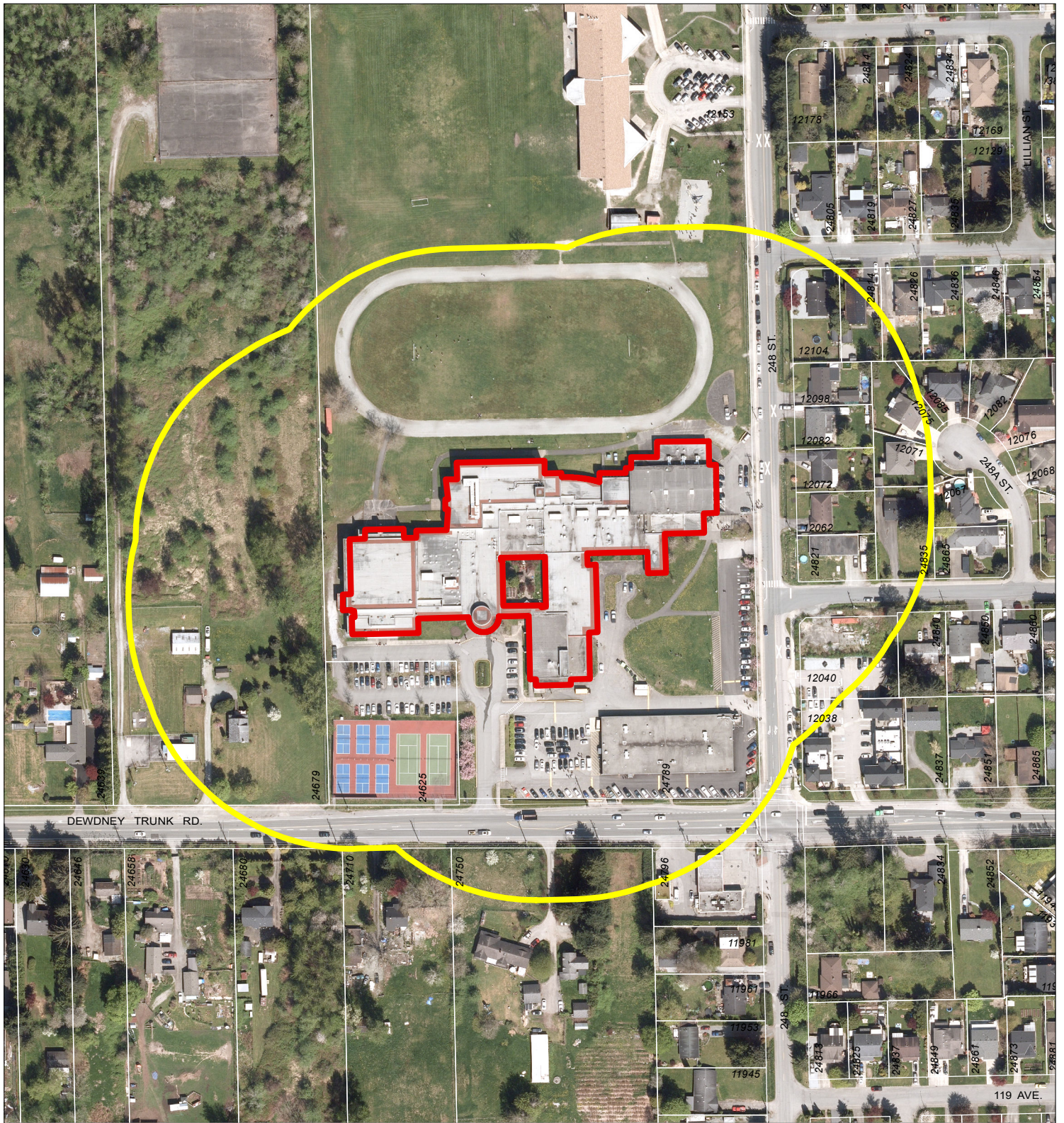
ELECTIONS OFFICE



Maple Ridge

FILE: VotingStations2026.mxd
DATE: Apr 30, 2026

BY: DT



Scale: 1:2,500

Legend

- Voting Location
- 100m Buffer of Voting Location

Garibaldi Secondary
24789 Dewdney Trunk Rd

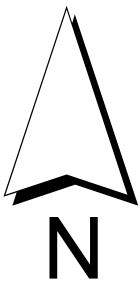
ELECTIONS OFFICE



Maple Ridge

FILE: VotingStations2026.mxd
DATE: Apr 30, 2026

BY: DT



Scale: 1:2,500

Legend

- Voting Location
- 100m Buffer of Voting Location

Hammond Elementary
11520 203 St

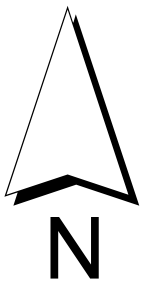
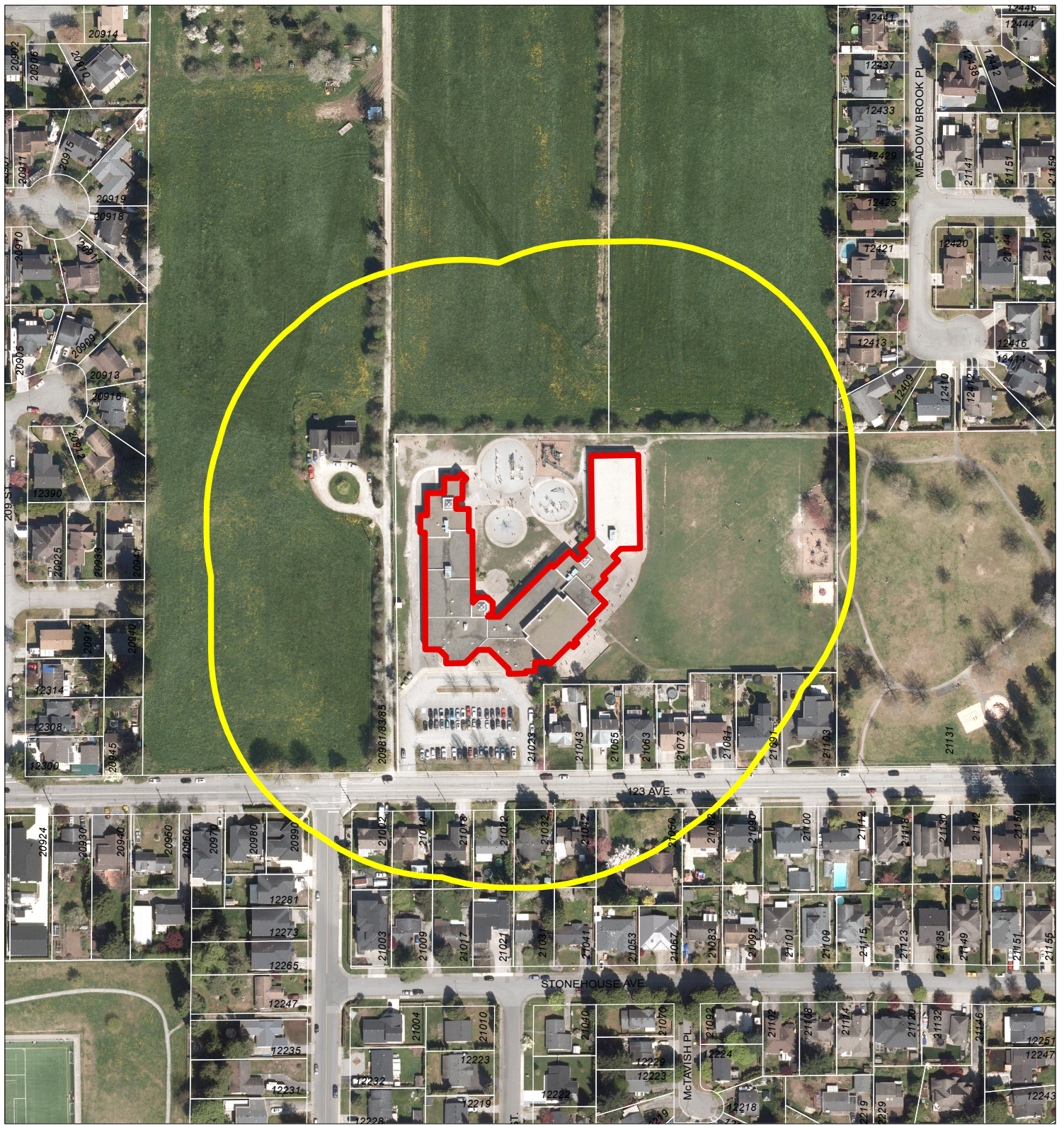
ELECTIONS OFFICE



Maple Ridge

FILE: VotingStations2026.mxd
DATE: Apr 30, 2026

BY: DT



Scale: 1:2,500

Legend

- Voting Location
- 100m Buffer of Voting Location

Laity View Elementary
21023 123 Ave

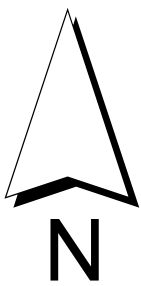
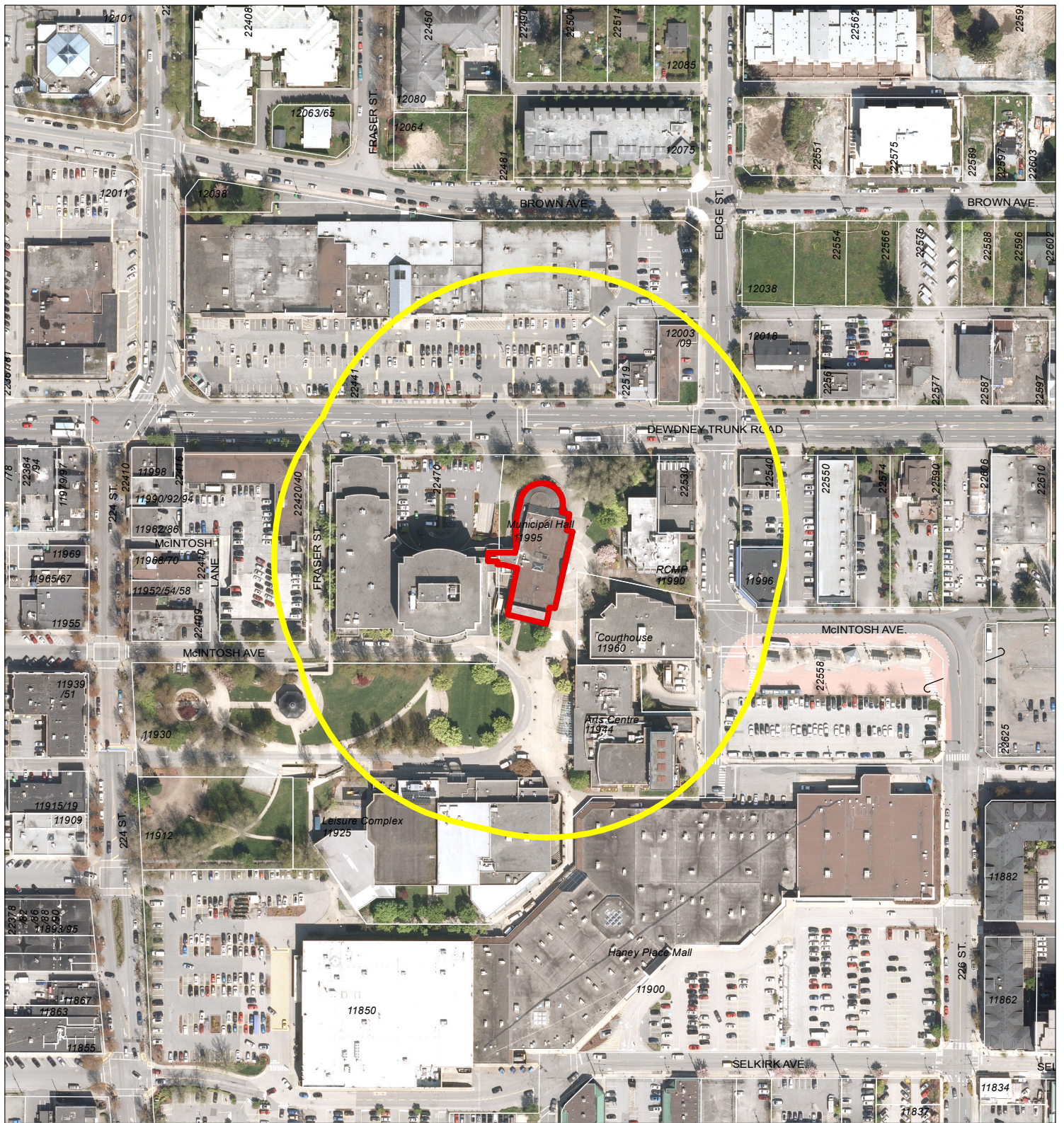
ELECTIONS OFFICE



Maple Ridge

FILE: VotingStations2026.mxd
DATE: Apr 30, 2026

BY: DT



Scale: 1:2,500

Legend

- Voting Location
- 100m Buffer of Voting Location

Municipal Hall
11995 Haney Place

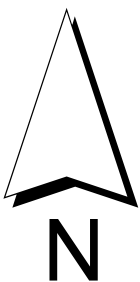
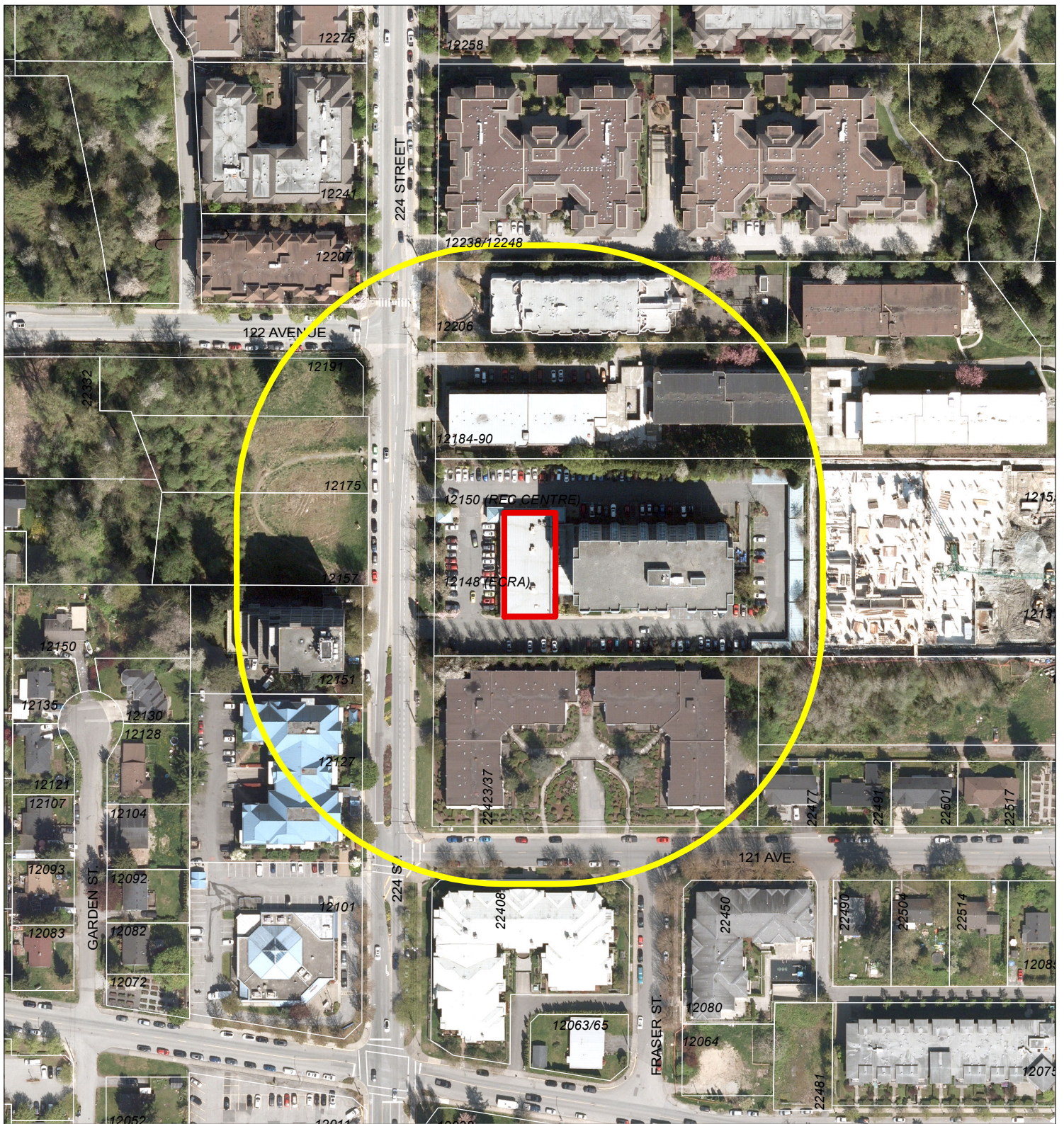
ELECTIONS OFFICE



Maple Ridge

FILE: VotingStations2026.mxd
DATE: Apr 30, 2026

BY: DT



Scale: 1:2,000

Legend

- Voting Location
- 100m Buffer of Voting Location

Ridge Meadows Seniors Activity Centre
12150 224 St

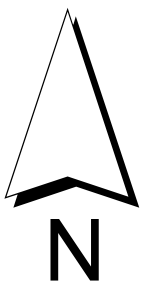
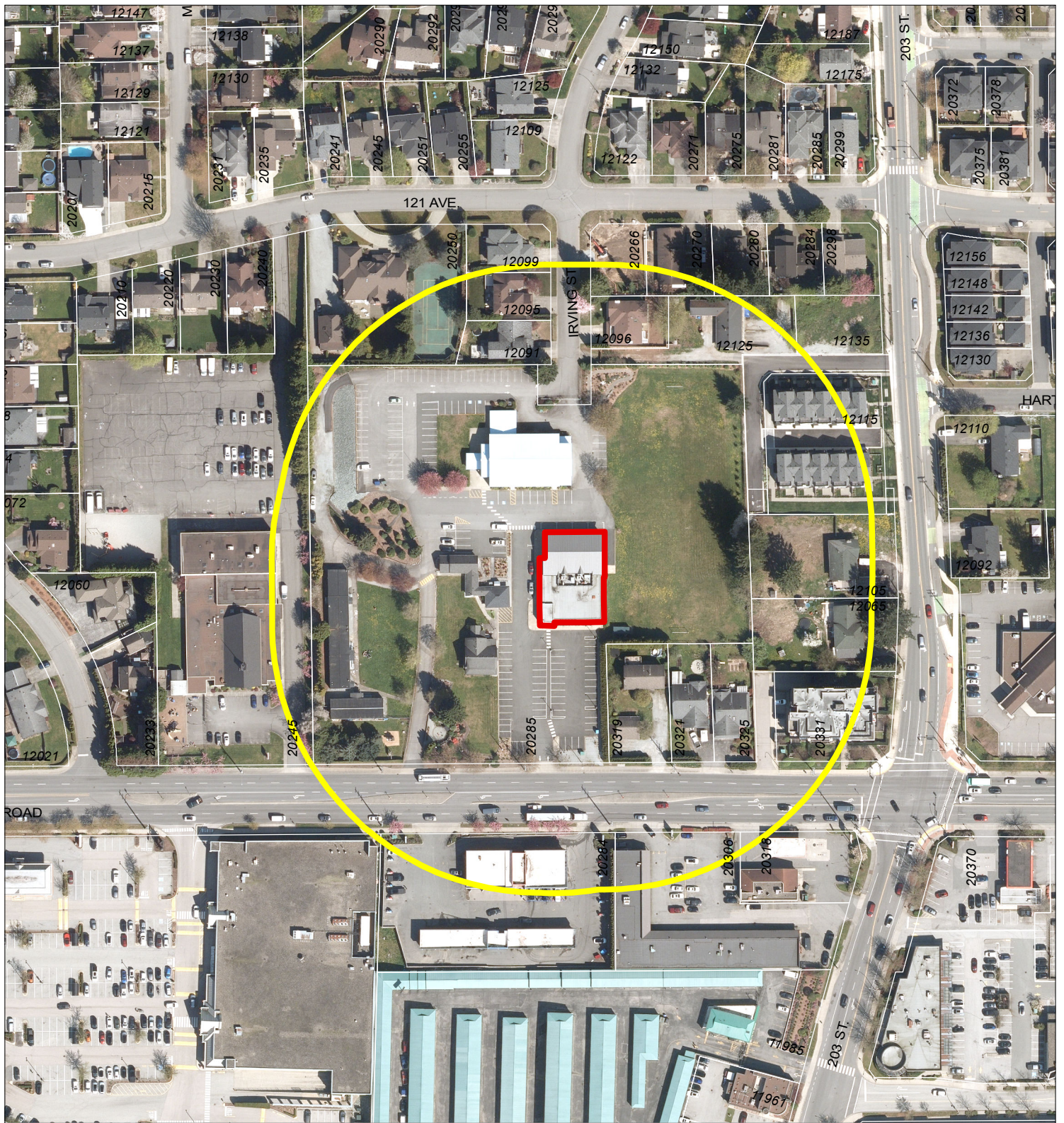
ELECTIONS OFFICE



Maple Ridge

FILE: VotingStations2026.mxd
DATE: Apr 30, 2026

BY: DT



Scale: 1:2,000

Legend

- Voting Location
- 100m Buffer of Voting Location

St. Luke's Hall
20285 Dewdney Trunk Rd

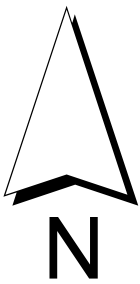
ELECTIONS OFFICE



Maple Ridge

FILE: VotingStations2026.mxd
DATE: Apr 30, 2026

BY: DT



Scale: 1:2,500

Legend

- Voting Location
- 100m Buffer of Voting Location

Thomas Haney Secondary
23000 116 Ave

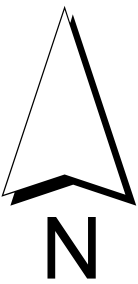
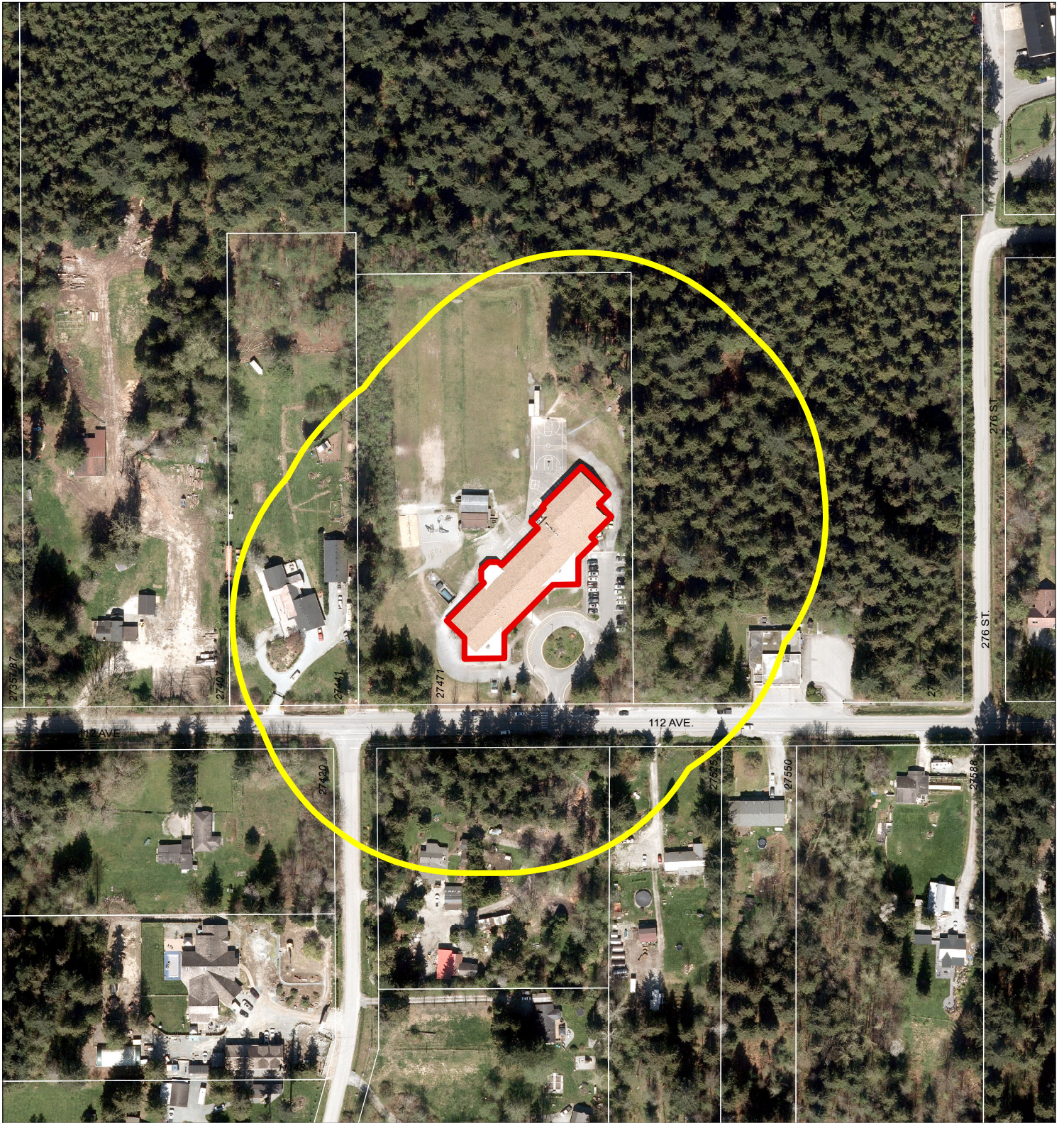
ELECTIONS OFFICE



Maple Ridge

FILE: VotingStations2026.mxd
DATE: Apr 30, 2026

BY: DT



Scale: 1:2,500

Legend

- Voting Location
- 100m Buffer of Voting Location

Whonnock Elementary
27471 112 Ave

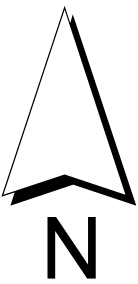
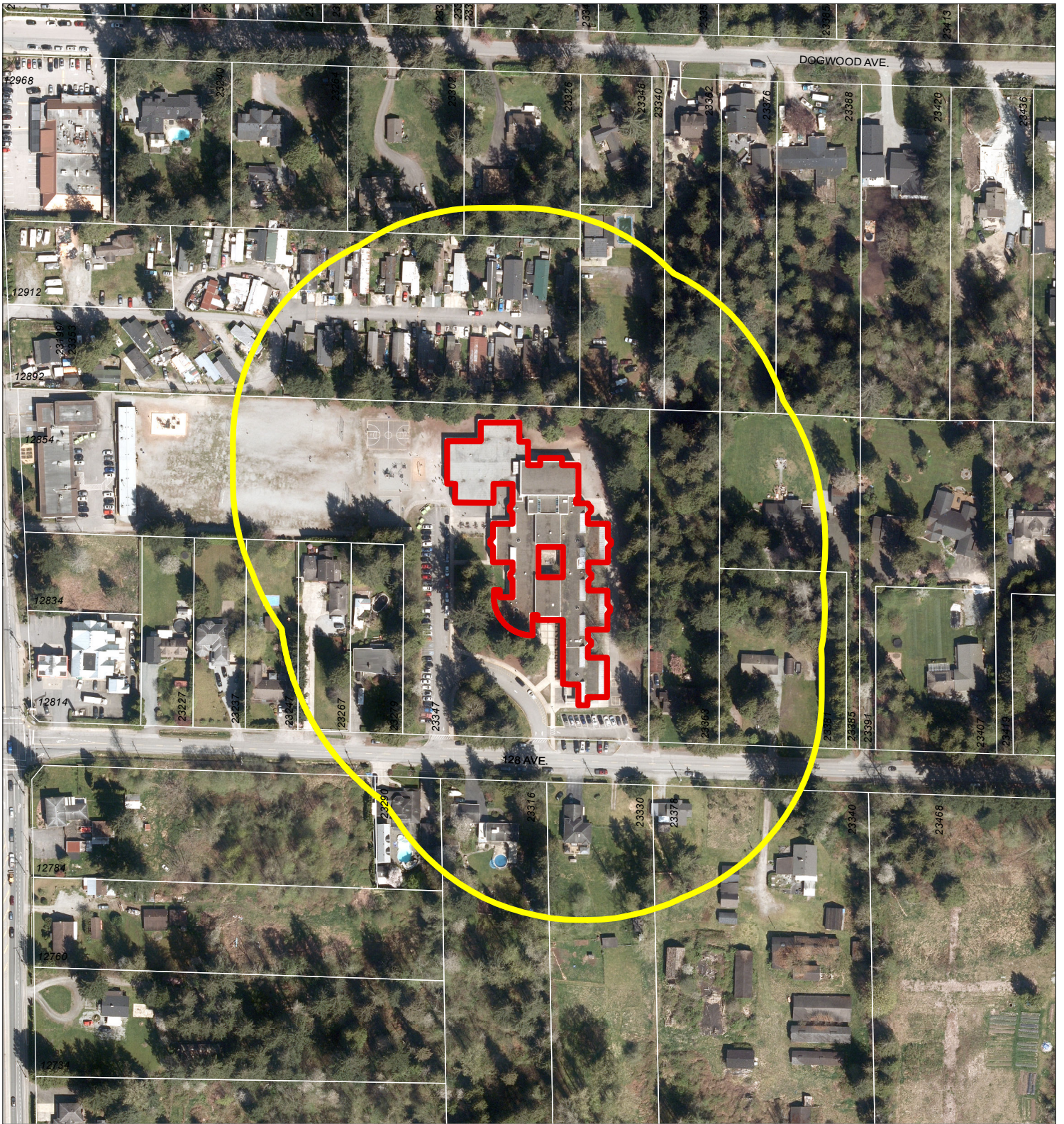
ELECTIONS OFFICE



Maple Ridge

FILE: VotingStations2026.mxd
DATE: Apr 30, 2026

BY: DT



Scale: 1:2,500

Legend

- Voting Location
- 100m Buffer of Voting Location

Yennadon Elementary
23347 128 Ave

ELECTIONS OFFICE



Maple Ridge

FILE: VotingStations2026.mxd
DATE: Apr 30, 2026

BY: DT