

2025 Budget Highlights



KEY BUDGET PRIORITIES



Housing and Transportation



Infrastructure and Environment



Community Safety



Economic Development

Message from Council

Maple Ridge's 2025 draft budget reflects the growing needs of our vibrant community - prioritizing investments in public safety, housing, transportation, environmental sustainability, and essential services.

Council understands the pressures many of our residents face around affordability. That's why we've asked staff to continue to

dig deeper—seeking additional savings and efficiencies—while ensuring we strike the right balance to maintain and enhance critical services that matter to our residents.

We encourage you to learn more about the proposed 2025 budget and share your feedback by Feb. 16 at [Engage. MapleRidge.ca/Budget2025](https://Engage.MapleRidge.ca/Budget2025).



Share your feedback
Jan 23 - Feb 16

From left: Councillor Onyeka Dozie, Councillor Sunny Schiller, Councillor Judy Dueck, Mayor Dan Ruimy, Councillor Jenny Tan, Councillor Ahmed Yousef, Councillor Korleen Carreras

[ENGAGE.MAPLERIDGE.CA/BUDGET2025](https://Engage.MapleRidge.ca/Budget2025)



2025 Operating Budget

\$175 M

The City's \$175-million operating budget for 2025 is focused on sustaining core municipal services while addressing key community priorities outlined in the 2023-2026 Council Strategic Plan and identified through community engagement in June and October 2024.

Impacted by a range of rising costs beyond its control, the City has taken proactive steps to help minimize the impact on taxpayers. These measures include re-prioritizing projects, distributing costs across multiple years, and applying for additional grant funding to support strategic initiatives.

Highlights

Learn more at Engage.MapleRidge.ca/Budget2025

FUNDED BY: Taxes Grants / Reserves

Housing and Transportation



To continue addressing provincial legislation & support Rapid Transit:

- Housing Action Plan implementation
- Official Community Plan update
- Bus Rapid Transit project

Community Safety



To continue improving community safety:

- Social planning pilot
- Social planning service
- Increase Community Safety Officer hours
- Increase Fire Service training support
- Enhance Animal Control service

Infrastructure and Environment



To increase infrastructure and enhance our natural environment:

- Capital Design & Construction team enhancement
- Increase capital program delivery
- Household Hazardous Waste Round-Up Day
- Tree planting program
- Urban forestry service

Community Events and Recreation



To provide diverse, inclusive, and accessible recreation opportunities:

- Major community event
- Event traffic control
- Mobile community events
- Maintain City-led events
- Increase community event grants
- Increase pool lifeguarding

Corporate Governance



To enhance corporate governance and support community needs:

- Data and Analytics Strategy
- Risk Management Program
- Corporate Strategic Plan
- Intergovernmental Relations Strategy implementation
- City marketing and brand awareness

Economic Development



To support a diversified and thriving economy:

- Industrial land planning
- Increase economic development marketing
- Attract filming opportunities

Tax Impact

2025 Proposed Property Tax Impact for Average Home

Assessed at \$1,100,000

	2024	\$ Change	% Change	2025
Total Municipal Taxes*	\$ 2,794	\$154	5.5%	\$2,948

* Property tax increase of 5.5% increase is subject to change and includes:

- 2.75%: Existing services and enhancements
- 1.35%: Police & Fire Enhancements
- 0.8%: Infrastructure sustainability
- 0.6%: Parks, Recreation & Culture improvements

Average Home** Municipal Levies

	2024	2025
General Purpose	\$2,794	\$2,948
User Fees		
Water (fixed rate)	787	822
Sewer (fixed rate)	580	716
Total Property Taxes and User Fees*	\$4,161	\$4,486

* Does not include collection for others (School District 42, BC Assessment Authority, TransLink, Greater Vancouver Regional District, Municipal Finance Authority)

** Average residence valued at \$1,100,000



How Do We Compare?*

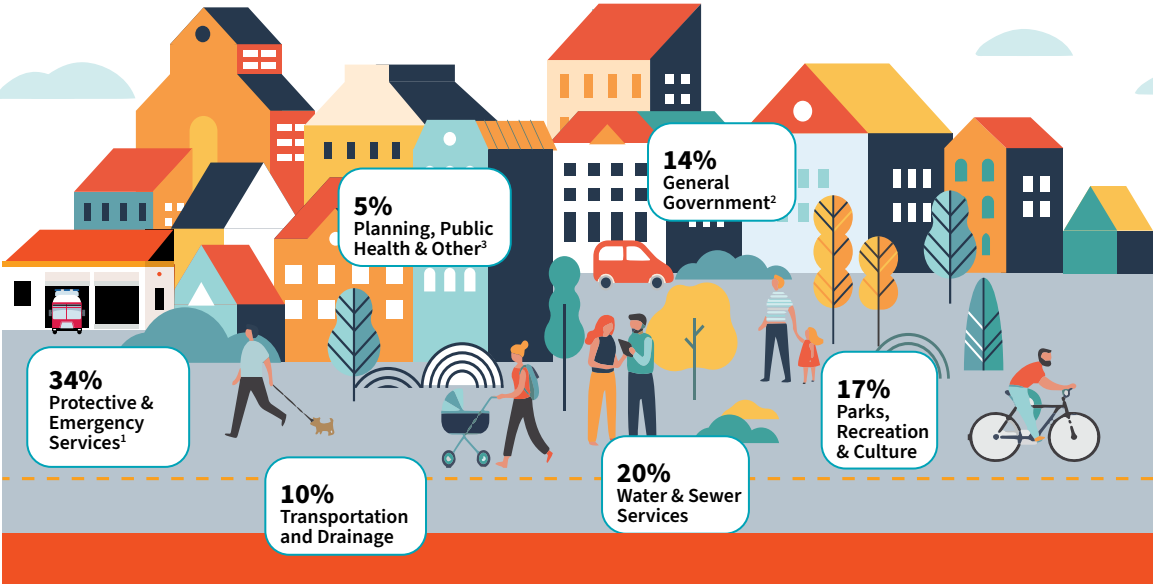
JURISDICTION	PTI **
Pitt Meadows	7.50%
Coquitlam	6.83%
New Westminster	6.60%
Mission	5.85%
Port Moody	5.71%
MAPLE RIDGE	5.50%
Port Coquitlam	4.30%

* Based on reported 2025 increases as of Jan 6, 2025
** Property Tax Increase (PTI)



How Tax Dollars Are Invested

Taxes help pay for a wide variety of civic services. This example is based on the 2025 operating budget.



¹ Includes police, fire, bylaws, Community Safety Officers

² Includes admin, legal, economic development, finance, HR, IT, communications

³ Includes development services, recycling, social planning and cemetery

2025 Capital Budget

\$67 M

The approved 2025–2029 capital plan will allocate \$67 million in 2025 to enhance and maintain essential infrastructure in Maple Ridge, including buildings, roads, equipment, and other assets crucial to the delivery of public services.

Capital projects for 2025 will be funded through a combination of development fees, reserve funds, and various grants, including the provincial Growing Communities Fund.

Capital Program Highlights

Learn more at MapleRidge.ca/CapitalPlan

**Silver Valley
Park
Development**



**Grant
Mountain
Reservoir
Twinning**



ACT Roof Replacement



**Gee Street
Neighbourhood
Utility
Improvements**



**Westside
Spray Park**



**Phase 2
Maple Ridge
Park
Improvements**



**Merkley Park
Baseball
Diamond
Improvements**



**Eric Langton
Synthetic
Field**



**Continue process
to plan, design,
& deliver a new
recreation facility &
additional ice rink(s)**



**Bike lane on 232 St.
from Abernethy to
Fern Crescent**



**Port Haney Waterfront
Improvements**

