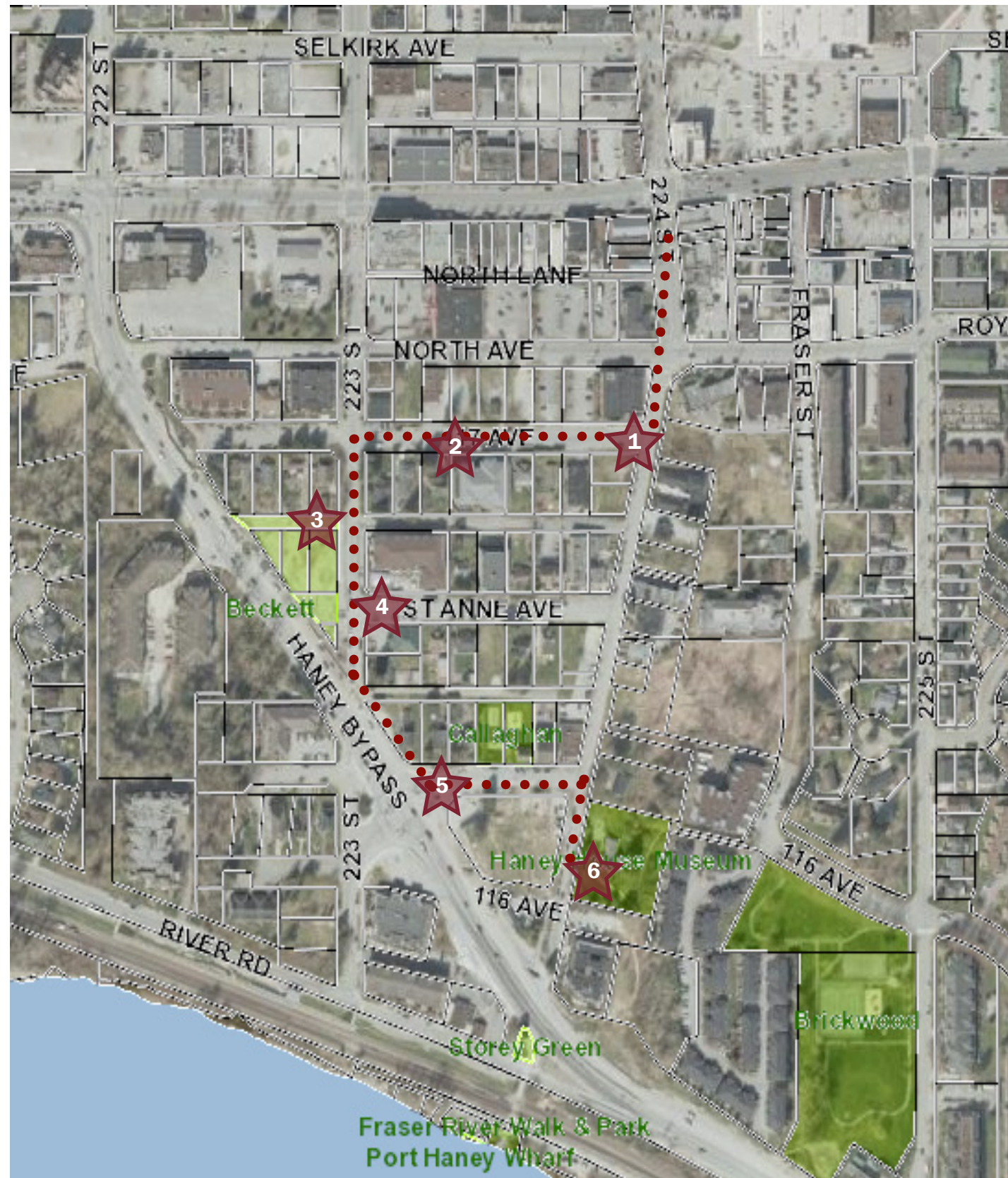


# Port Haney Land Use Policy Review Self-Guided Walking Tour

As a part of the Port Haney Land Use Policy Review, a Self-Guided Walking Tour route with reflective questions has been put together to encourage the exploration of the Port Haney Area. There are six stops on the route. Please take a moment to safely pause at each stop to take in your surroundings. Pay attention to the sights, sounds, and activities going on around you.

While space has been provided below for notes, please enter your Walking Tour observations online through the Walking Tour form available at [www.mapleridge.ca/2626](http://www.mapleridge.ca/2626). We will be collecting responses until June 30th, 2022.



If you have any questions or comments regarding the Self-Guided Walking Tour, Online Survey, or Port Haney Land Use Policy Review, please email the Planning Department at [planning@mapleridge.ca](mailto:planning@mapleridge.ca) or call 604-467-7341.

## Stop 1 - Corner of 224th & 117th

How do the building heights impact the feel of this place?  
What types of businesses would you like to see in the area?  
How are people using the space(s) around you?

## Stop 2 - Regency Place

What would have made your walk to this place more enjoyable?  
How do the building heights impact the feel of this place?  
How are people using the space(s) around you?

## Stop 3 - Beckett Park

What activities or places make you want to stay here?  
What would attract more people to this place?  
How are people using the space(s) around you?

## Stop 4 - Corner of St. Anne and 223rd

How do the building heights impact the feel of this place?  
What would enhance the connection with the past in this place?  
How are people using the space(s) around you?

## Stop 5 - Callaghan Street

How do the building heights impact the feel of this place?  
Can you see the river? Is it important to keep the view?  
How are people using the space(s) around you?

## Stop 6 - Haney House

What would attract more people to this place? What changes could impact this heritage resource? How are people using the space(s) around you? How do the vegetation and landscaping connect you with this place?

Notes

Thank you for completing the Walking Tour!

If you haven't already had the opportunity to fill out the Port Haney Land Use Policy Review Online Survey, please visit [www.mapleridge.ca/2626](http://www.mapleridge.ca/2626) to complete the survey. This survey will close June 27th, 2022.

