



Rain Garden

SMP Objectives

Help improve ongoing issues with water volumes, flow rates, and water quality

Issues:

- Flooding due to inadequate outfall size
- Maintenance access restrictions
- Water quality

Solutions:

Outfall improvements, bio-swailes, raingardens, green roofs, green walls, bio-ponds and wetlands to help deal with these issues.

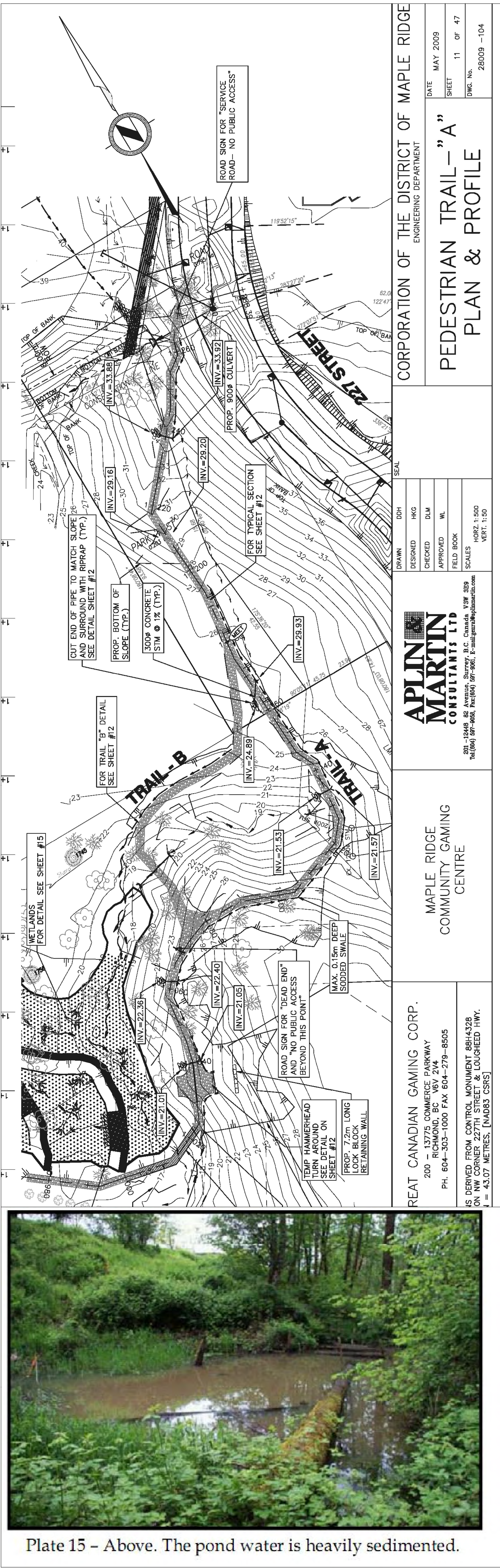
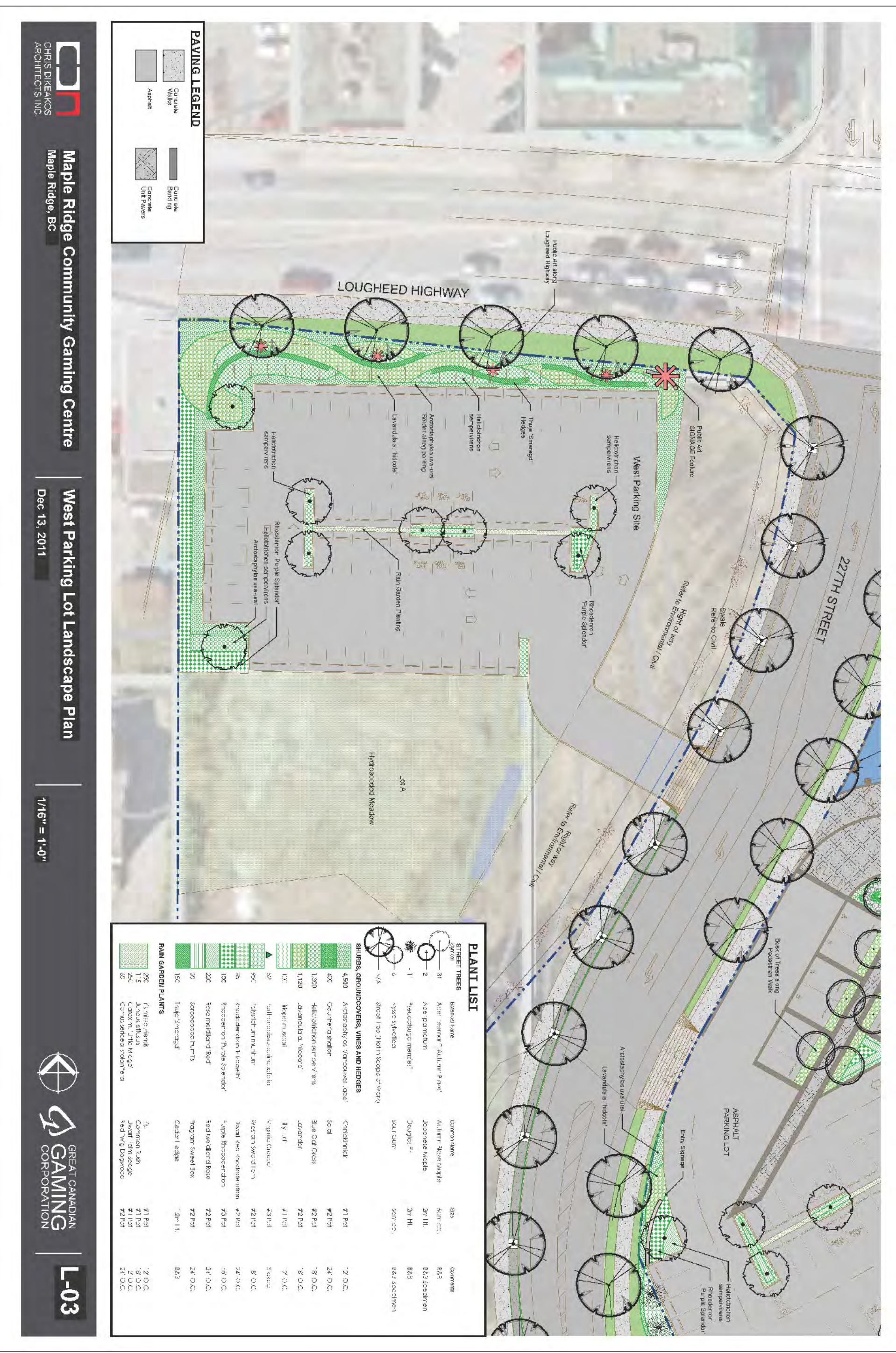
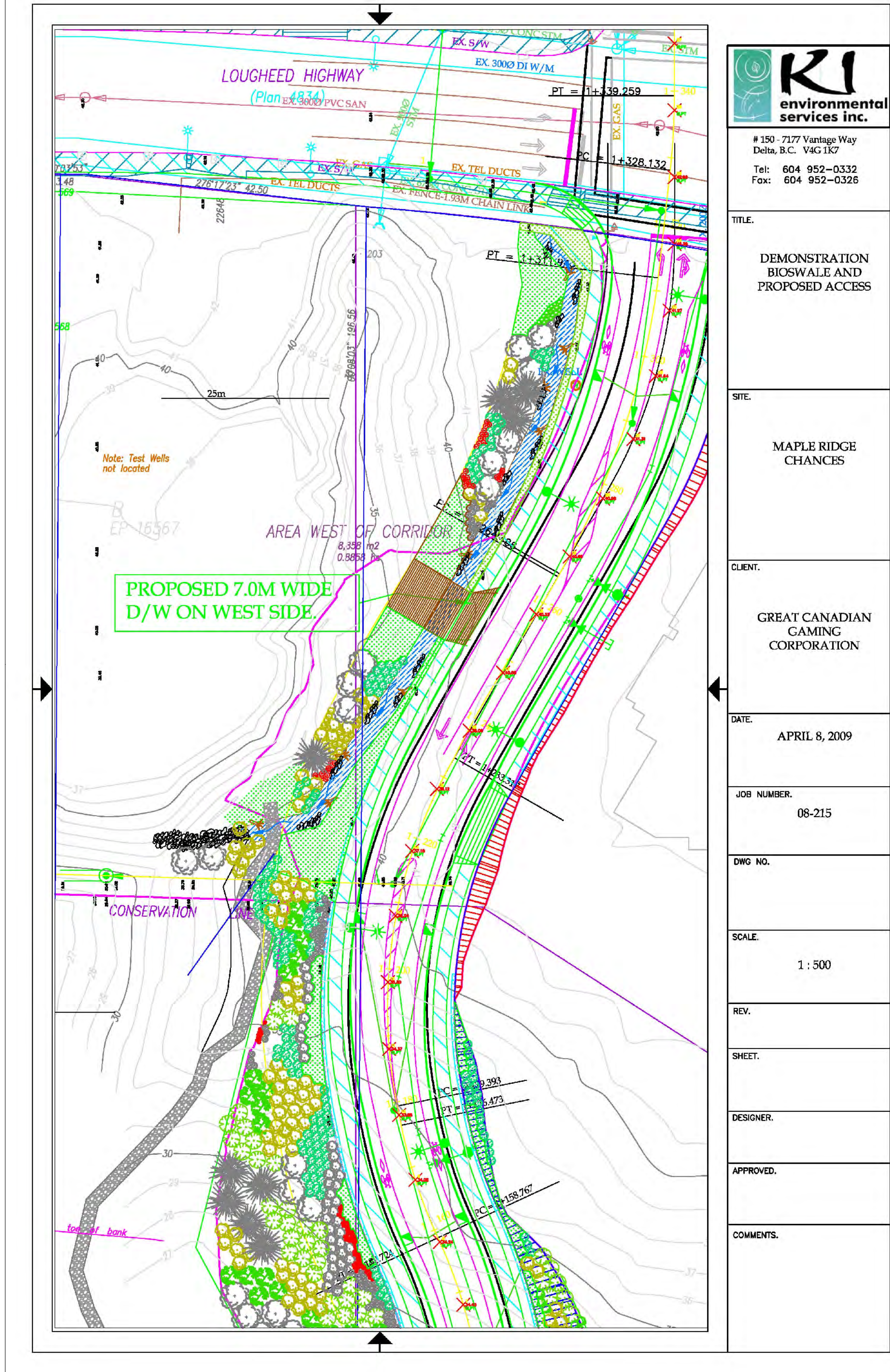


Plate 15 - Above. The pond water is heavily sedimented.

Stormwater Management & Erosion Control