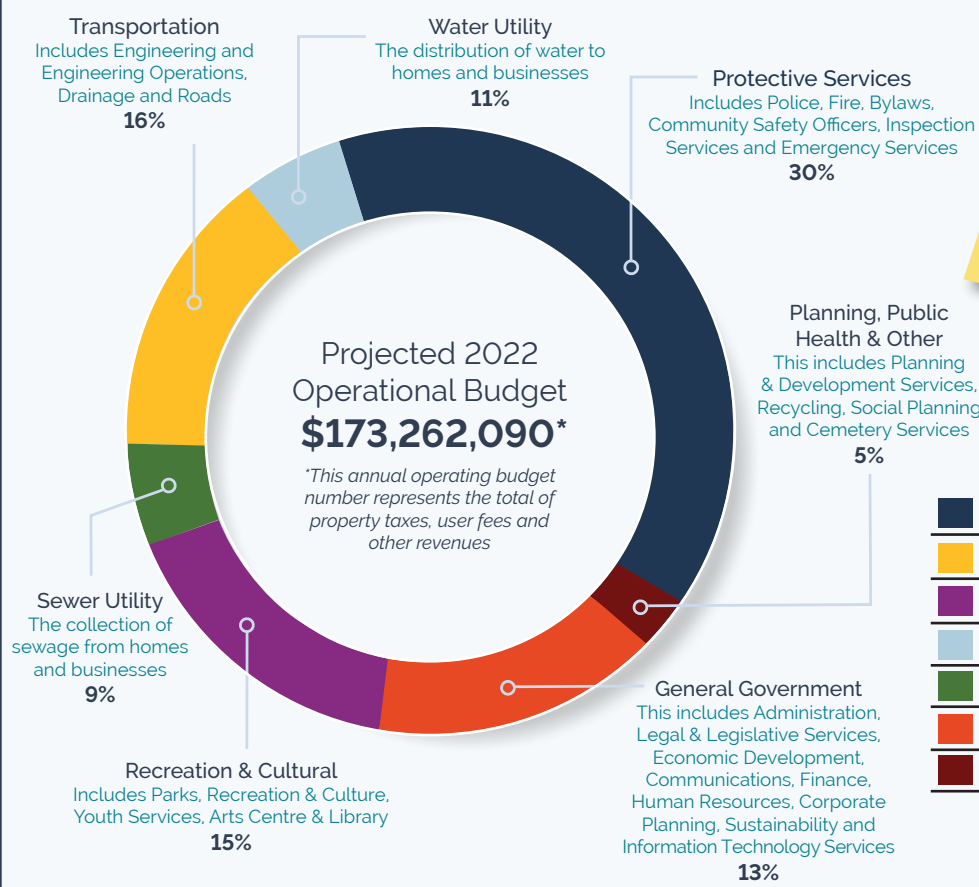


# 2022 PROJECTED USE OF FUNDS

## OPERATIONAL BUDGET



How your tax dollars are spent

Protective Services	52,284,717
Transportation	27,487,924
Recreation & Cultural	26,669,074
Water Utility	19,652,587
Sewer Utility	15,576,404
General Government	23,238,572
Planning, Public Health & Other	8,352,812

Each year Council is presented with a Five-Year Financial Plan and Corporate Business Plan to operate the City. This chart lays out the projected 2022 Use of Funds for operational activities for Maple Ridge and represents a breakdown of how your tax dollars are spent. This table does not include 'Capital' spending that is planned for 2022. The **information below** outlines what is collected as part of the 2022 Property Tax Notice and one-time special levy to address the long-term impacts of the Federal Government's RCMP contract settlement. In June of 2022 the City will release its Annual Report and Citizens Report for the year ending December 31, 2021. These reports allow you to explore the City's finances in depth. They can be viewed at [mapleridge.ca/317](http://mapleridge.ca/317).

# WHAT'S ON YOUR 2022 PROPERTY TAX NOTICE

### WHAT ARE YOU PAYING AND WHERE DOES THE MONEY GO?

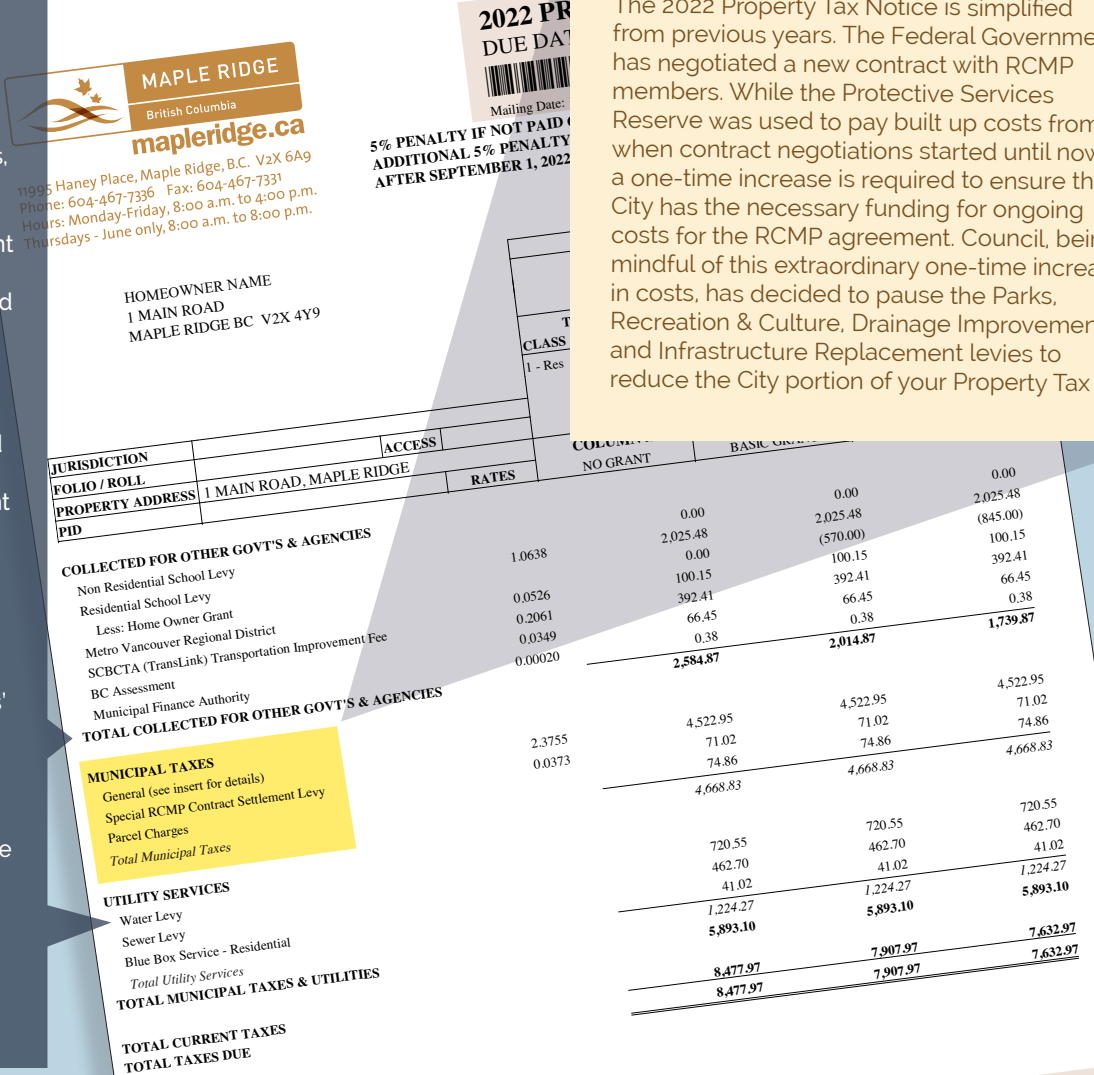
Not all the money you pay goes to the City. Your 2022 Property Tax Notice includes assessments, fees and levies for the Province of BC, Metro Vancouver Regional District, TransLink, BC Assessment Authority and Municipal Finance Authority. This cost is summarized in the 'Total Other Government taxes' line of your notice.

You will find a 'Utility Services' section that includes a water and sewer levy for properties that receive these services. A significant portion of the water and sewer levies are transferred to Metro Vancouver to fund the regional infrastructure and operation of those services.

The funds in the 'Municipal Taxes' section go to City services as outlined at the top of this page titled 'How Your tax Dollars Are Spent.' There is a 'Special RCMP Contract Settlement Levy' and we direct you to the information box on the right for an explanation of this one-time levy.

### CHANGES TO THE 2022 TAX NOTICE

The 2022 Property Tax Notice is simplified from previous years. The Federal Government has negotiated a new contract with RCMP members. While the Protective Services Reserve was used to pay built up costs from when contract negotiations started until now, a one-time increase is required to ensure the City has the necessary funding for ongoing costs for the RCMP agreement. Council, being mindful of this extraordinary one-time increase in costs, has decided to pause the Parks, Recreation & Culture, Drainage Improvement and Infrastructure Replacement levies to reduce the City portion of your Property Tax bill.



# 2022 COUNCIL STRATEGIC PLAN UPDATE



*We are pleased to present the 2022 Council Strategic Plan Update on the five pillars of our vision for the community. The last four years have seen us make significant progress on the goals that we established when we were first elected in the fall of 2018.*

*For more information on our Strategic Priorities please visit [mapleridge.ca/2369](https://mapleridge.ca/2369) where you can review our Strategic Plan and the most up-to-date metrics on our work to deliver the shared vision we have for Maple Ridge.*

*On behalf of Council, I would like to thank citizens for their continued engagement as we work together to make Maple Ridge the best little City in BC.*

**Mayor Mike Morden**

## COMMUNITY SAFETY

**GOAL:** Ensure that citizens feel safe and are not afraid to engage in their community, that criminal activity is prevented or minimized, that people who need services can access them easily, that agencies understand and are accountable for their role and that all of this occurs within the capacity of local first responders and service providers.

### ACTIONS

- Integrated Safety Ambassador Program
- Community Resource Hub with senior government funding and inter-agency collaboration
- Community Safety Officer 16/7 service model deployment
- Supportive Recovery Housing Bylaw
- Restorative Justice, Integrated Court and Diversion Initiatives
- CSSI Public Engagement including neighbourhood consultation

## GROWTH

**GOAL:** Implement strategic plans related to local infrastructure and the economy including commercial and industrial land base, transportation corridors, transit, neighbourhood plans and key amenities.

### ACTIONS

- Economic Development Strategy
- Strategic Transportation Plan
- Connected Community Strategy
- Area Planning for: Lougheed Transit Corridor, Yennadon Employment Lands, North-East Albion, Town Centre Area Plan update
- Abernethy Way extension & 240 Street bridge – Phase 3
- Community Development & Enterprise Services Committee
- Building Permit Function Review to improve processes, timing and customer service

## COMMUNITY PRIDE AND SPIRIT

**GOAL:** Engage the public in positive activities as participants and as volunteers, to enhance the vibrancy of the community.

### ACTIONS

- Hammond Heritage Incentives Survey
- Parks, Recreation & Culture Master Plan Development Process
- Community Inclusion Framework
- Youth and Age-Friendly Community strategies
- Summer Games Legacy Fund Disbursement
- Six new Public Art Installations
- Unsightly & Untidy Premises Bylaw
- Celebrate the Night in-person event

## INTER-GOVERNMENT RELATIONS

**GOAL:** Build strong relationships with the region, other levels of government and local First Nations to set a foundation for problem solving and innovation to achieve defined strategic results.

### ACTIONS

- Strategic Grant Funding secured for:
  - \$140,000 – Albion Park Play Structure
  - \$200,000 – Silver Valley Gathering Place
  - \$1.2M - Strengthening Communities' Services Program
  - \$150,000 – Local Government Development Approvals Grant
  - \$3.4M – TransLink Transportation Funding
- Community Resource Hub including First Nations partnership
- Metro 2050 & Transportation 2050 Plan input
- First Nations collaboration on Strategic & Master Plans including the Heritage Plan, Thornhill area and Lougheed Transit Corridor

## NATURAL ENVIRONMENT

**GOAL:** Be alert to opportunities to care for the natural environment, to mitigate impacts on wildlife and to utilize natural assets to grow eco-tourism opportunities.

### ACTIONS

- Sanitary Sewer Inflow and Infiltration Reduction Strategy
- Endorsed in principle Green Infrastructure Management Strategy
- Fraser River Escarpment review
- Trails Management Strategy
- Adopted new Green House Gas Emissions targets
- Phase 3 LED street-light conversion project

If you have any questions about this update we encourage you to email us at [mayorandcouncil@mapleridge.ca](mailto:mayorandcouncil@mapleridge.ca).

We also encourage you to take a moment to review the information on the other side of this update outlining how your tax dollars are spent. Our goal is to be transparent about the cost drivers to deliver service levels that citizens expect.