

Welcome!

LEAD Maple Ridge

Let's Talk Community Safety



MAPLE RIDGE
British Columbia

Before Getting Started

- We are here to share perspectives, listen, and learn
- There will be **zero tolerance** for those who negatively characterize, stereotype, or discriminate against individuals (based on race, ethnicity, national origin, sexual orientation, gender identity, religious affiliation, or different ability)
 - Anyone who does so will be removed at the discretion of our technical team and moderator
- Be as present as possible – turn on video to participate in discussion
- If you've asked a question or shared a comment, ensure that new voices are heard before you contribute again

Agenda

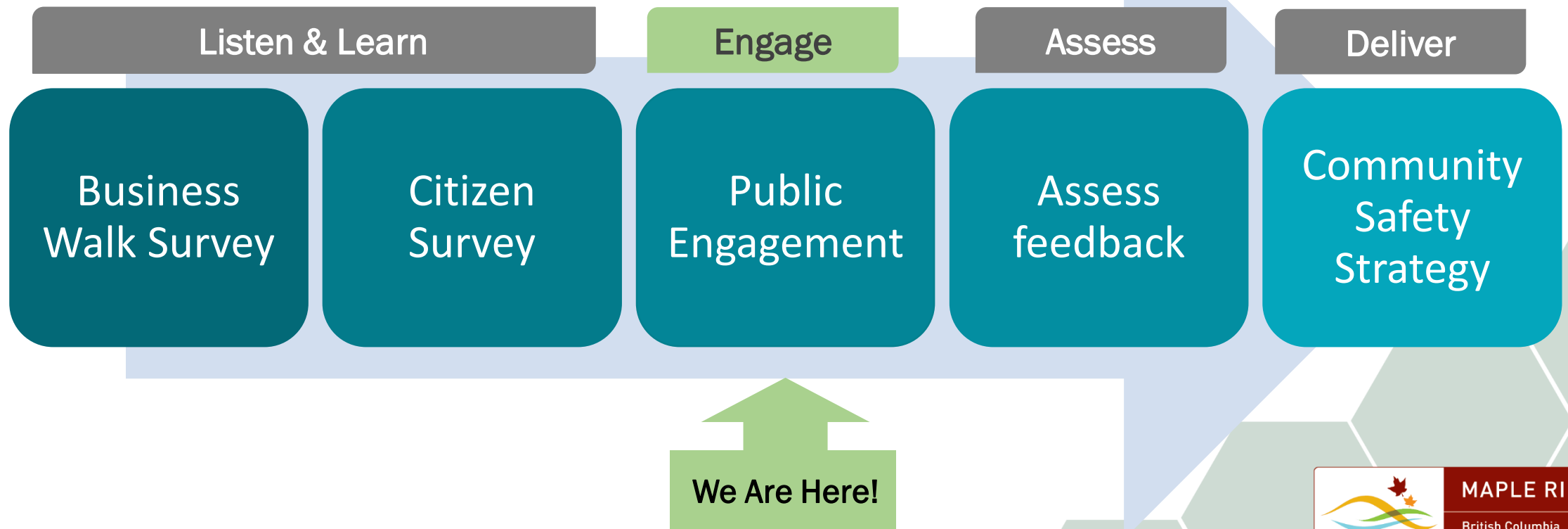
- Panel Introductions
- Panel Presentations
 - Community Social Safety Initiative (CSSI)
 - CSSI Expert Consultants
 - Maple Ridge Fire Department
 - Ridge Meadows RCMP Detachment
- Question and Answer Period
- Next Steps

The Panel

- **Christina Crabtree**, General Manager of Corporate Services
- **Chad Cowles**, Manager of Community Social Safety Initiative, Bylaw Services
- **Lisa Zosiak**, Manager of Community Planning
- **James Clelland**, Assistant Chief Fire Prevention, Maple Ridge Fire Department
- **Adam Gander**, Inspector, Ridge Meadows RCMP Detachment
- **Julie Klaussner**, Constable (Media Relations), Ridge Meadows RCMP Detachment
- **Rob Thiessen**, CSSI Expert Consultant, retired Executive Director of Hope for Freedom Society
- **Fraser McRae**, CSSI Expert Consultant, retired RCMP OIC in Surrey and Maple Ridge

The Process

We are looking for feedback on how we can help make you feel safe, protected, engaged, and support your well-being in public spaces



Community Safety Action Plan

Citizens Feel Safe and Are Engaged in the Community

- Clean Streets and Walkways
- Vibrant Downtown
- Enhanced Volunteer Programs

Citizens are Protected

- Visibility/Response
- Protective Services

Citizens' well-being is supported

- Alternate Forms of Justice
- Corrections
- Housing



Citizens Feel Safe and Engaged in the Community

Clean Street and Walkways

- Lock Out Crime Through Environmental Design
- Enhanced early morning cleanup services
- Needle removal training
- Community Safety Officers



Community Social Safety File Closure Rate
(Homelessness & Safer Streets Calls)



88%

Citizens Feel Safe and Engaged in the Community

Enhanced Volunteer Programs

- Enhanced Block Watch Communications
- Integrated Safety Ambassador Team (ISAT)

Vibrant Downtown

- Light Alleyways
- Downtown Activations
- Town Centre Visioning

Citizens are Protected

Visibility and Response

- Tiered enforcement and enhanced visibility
- RCMP Proactive Foot-beat file
- RCMP Extended On Site Visibility
- Uniformed Community Response Unit Bike Patrol
- Safer Streets Bylaw

Citizen Well-Being is Supported

Alternate Forms of Justice

- Restorative Justice
- Transitional Services
- Integrated Court

Housing

- Housing Action Plan
- Social Service Mapping Inventory
- Supportive Recovery Bylaw



CSSI Expert Consultants

1. What is your impression of the level of consultation and engagement of the CSSI to this point?
2. What internal and external partnerships and cooperation have you observed?
3. Can you speak to your impressions of the livability in this community?
4. Can you describe the degree of the social challenges we face?
5. Do you feel that our community looks different since the roll-out of the CSSI?

LEAD Community Safety Panel

MAPLE RIDGE FIRE

Reactive Support

- **Fire Truck Response**

- Calls to Emergencies

- Yearly Average

5800 responses

- 2021 Jan – to date

3766 responses

- **Types of calls:**

- Regular: Fires, Vehicle Accidents, Medicals, Alarms

- Periodic: Windstorms, Flooding, Assists

- Technical Rescue: Swift Water, Rope, Confined Space, Crane

Proactive Support

- **Systematic Inspections**
 - Approximately 2600 public occupancies
 - New Business License Inspections
- **Interdepartmental Reviews**
 - Plan reviews in conjunction with other CMR departments (Planning, Engineering, Building)
- **Wildfire Protection**
 - Wildfire Protection Plan and review of development plans

Proactive Support

- **Public Education**
 - School / Youth programs (Youth Academy)
 - Hot Summer Nights / Open House / tours
 - Charitable association
- **Emergency Management**
 - Emergency Plans
 - Emergency Operations Centre
 - Emergency Support Services



Ridge Meadows RCMP

One Team Stronger Together

RIDGE MEADOWS RCMP DETACHMENT

LEARNING EVENT VIRTUAL PANEL ON COMMUNITY SAFETY

July 29, 2021





SENIOR LEADERSHIP TEAM



Superintendent Wendy Mehat, Officer in Charge



Inspector Adam Gander, Operations Support



Inspector Jayson Lucash, Operations



PROJECT C.O.R.E. (Community Policing; Outreach; Response and Enforcement)

- In February 2021, Ridge Meadows RCMP launched the Project C.O.R.E. initiative with the goal of increasing connections with community partner resources and enhancing safety in the downtown Maple Ridge area. The results have been impressive and exceeded expectations.



226 business visits



85 offences investigated



8 community services referrals accepted



332 community interactions



85 violation tickets issued



114 total patrols



I.S.A.T. (Integrated Safety Ambassador Team)

- In June, 2021 Mayor and Council endorsed the development of a volunteer ambassador program focusing on community safety, business outreach and city spirit as outlined in the City of Maple Ridge Community Social Safety Initiative. This is the first joint ambassador program in BC.
- This is a joint volunteer ambassador program between the RCMP Crime Prevention Unit and the City's Community Safety Officer Section from the Licences and Bylaws Department. This program will increase information sharing, data collection, and referrals relating to the mandate of the program.
- This model serves as a conduit between our community and safety enforcement services and provides the public with a recognizable volunteer team that is highly knowledgeable and approachable.
- The initiative provides a one-stop service with interactions with businesses and citizens as a streamlined approach to address safety concerns.





ROAD SAFETY

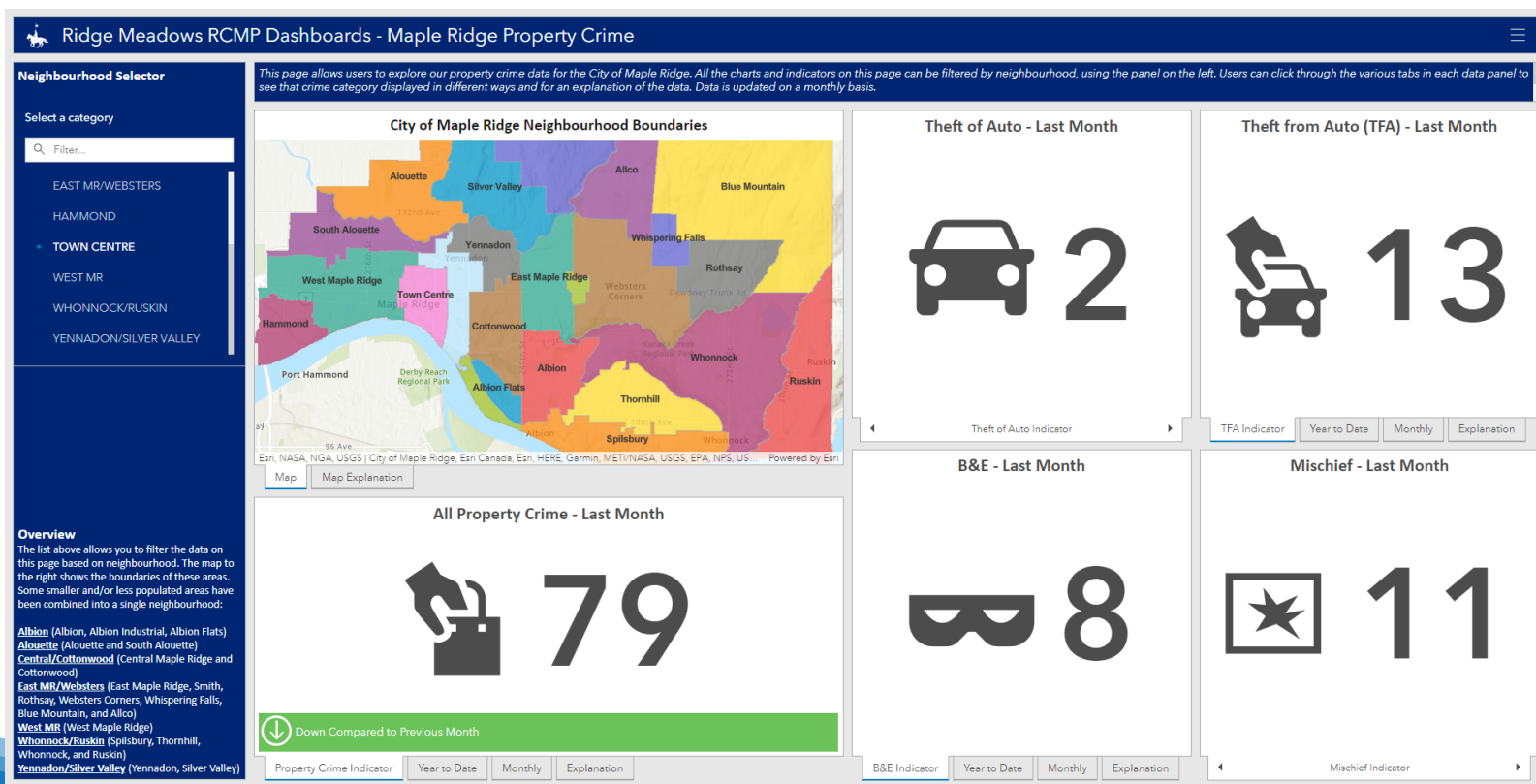
- The Road Safety Target Team has launched two new road safety initiatives in response to public feedback throughout the year and during last year's strategic planning, aimed at slowing speeders.
- The Black Cat is a specialized recorder which collects traffic and driving behavioural information. It provides accurate and unbiased traffic information through data collection.
- The Scarecrow is a life-sized picture cut-out of one of Ridge Meadows RCMP's constables standing in a "traffic radar" pose. This encourages drivers to check their speed and slow down.
- On-going high risk drivers enforcement including Project Domino (528 impaired drivers in 2020) and excessive speeding.





DASHBOARD

- This month the RCMP/Police Services launched new dashboards to report statistics and data in a way that is more efficient, effective and transparent to the public.
- Currently 3 dashboards: Crime Overview, Road Safety, Performance & Service Delivery, Crime Prevention (coming soon)



Questions and Answers



How To Provide Input

- Participate in the community dialogue
 - Email: leadtogether@mapleridge.ca
- Visit the project website: www.mapleridge.ca/2370
- Fill out the survey!
 - Available online or paper on request till July 31st.

Thank You!

Let's Talk Community Safety

mapleridge.ca/2370

leadtogether@mapleridge.ca



MAPLE RIDGE
British Columbia