

# Welcome!

## LEAD Maple Ridge

*Let's Talk Community Safety*



MAPLE RIDGE  
British Columbia

# Before Getting Started

- We are here to share perspectives, listen, and learn
- There will be **zero tolerance** for those who negatively characterize, stereotype, or discriminate against individuals (based on race, ethnicity, national origin, sexual orientation, gender identity, religious affiliation, or different ability)
  - Anyone who does so will be removed at the discretion of our technical team and moderator
- Be as present as possible – turn on video to participate in discussion
- If you've asked a question or shared a comment, ensure that new voices are heard before you contribute again



# Test Poll Question

***What is your favourite  
kind of cake?***



# Agenda

- Staff Introductions
- Background information of the Community Social Safety Initiative (CSSI)
- Overview of the CSSI Action Plan
- Challenges and opportunities
- Next Steps

# Who We Are

- **Christina Crabtree**  
General Manager of Corporate Services
- **Chad Cowles**  
Manager of Community Social Safety Initiative
- **Lisa Zosiak**  
Manager of Community Planning
- Representatives from Community Planning, Engineering and Parks.

# Why We Are Here

- We listened to businesses, organizations, and community, neighbourhood members regarding their safety concerns.
- Council listened as well and created an interim Community Social Safety Action Plan while the City organized this process.
- Community Safety is a top strategic priority for Mayor and Council.
- Now we are looking to further develop and expand the Community Social Safety Action Plan with your help.



# Background Information

## Community Social Safety Initiative (CSSI)

### WHAT

Feeling safe and  
engaged

Feeling protected

Feeling support for  
personal well-being

### HOW

L  
Listen

E  
Engage

A  
Assess

D  
Deliver

### WHY

Build Community  
Resilience

Achieve  
Community  
Well-Being

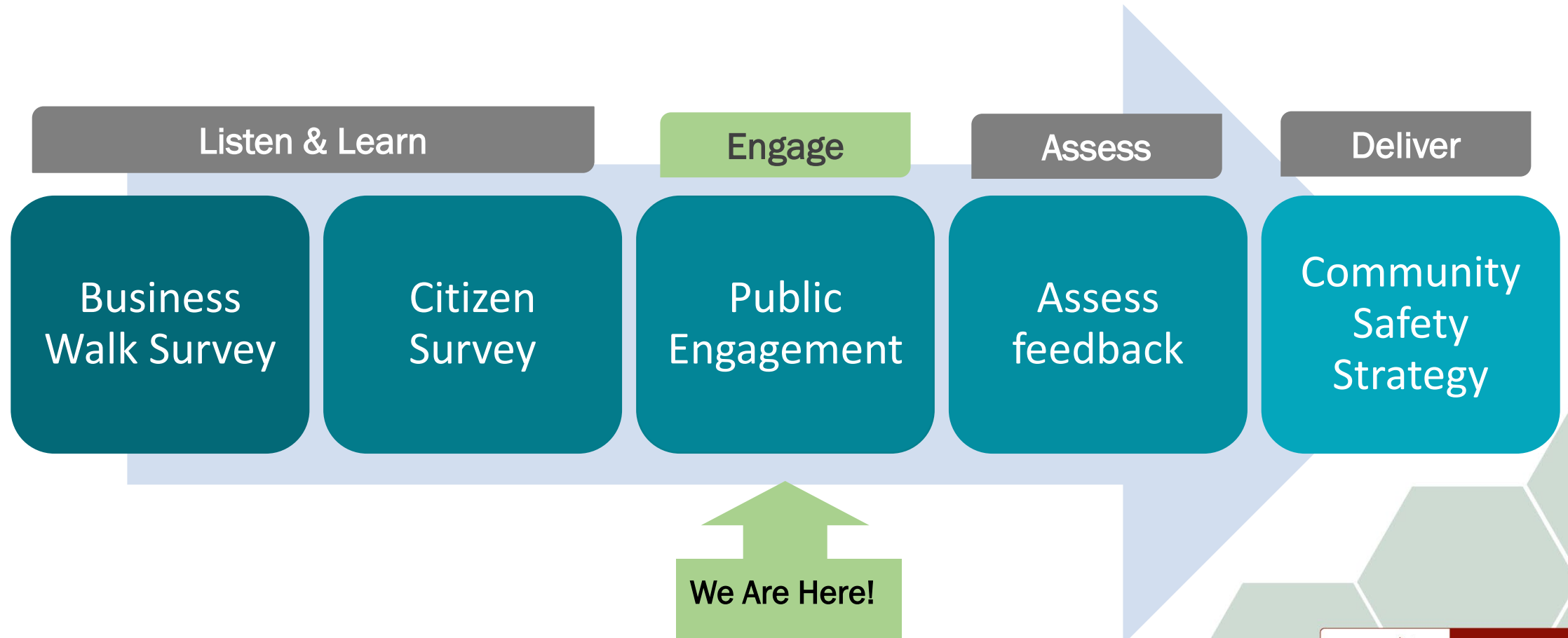
Increase Support for  
Each Other



MAPLE RIDGE

British Columbia

# LEAD Process





# What Have We Done So Far?

# Community Safety Action Plan

## 1. Citizens Feel Safe and Are Engaged in the Community

- Clean Streets and Walkways
- Vibrant Downtown
- Enhanced Volunteer Programs

## 2. Citizens are Protected

- Visibility/Response
- Protective Services

## 3. Citizens' well-being is supported

- Alternate Forms of Justice
- Corrections
- Housing



# Community Safety Action Plan

## 1. To Help Citizens Feel Safe and are Engaged in the Community

### **Clean Street and Walkways**

- Lock Out Crime Through Environmental Design
- Enhanced early morning cleanup services
- Needle removal training
- Created Community Safety Officers section

# Community Safety Action Plan

## 1. To Help Citizens Feel Safe and are Engaged in the Community (continued)

### Enhanced Volunteer Programs

- Enhanced Block Watch Communications
- Integrated Safety Ambassador Team (ISAT)

### Vibrant Downtown

- Light Alleyways
- Downtown Activations
- Town Centre Visioning

# Community Safety Action Plan

## 2. To Help Protect Citizens

### Visibility and Response

- Tiered enforcement and enhanced visibility
- RCMP Proactive Foot-beat file
- RCMP Extended On Site Visibility
- Uniformed Community Response Unit Bike Patrol
- Safer Streets Bylaw

# Community Safety Action Plan

## 3. To Help Support Citizen's Well-Being

### Alternate Forms of Justice

- Restorative Justice
- Transitional Services
- Integrated Court



# Community Safety Action Plan

## 3. To Help Support Citizen's Well-Being



# Housing Initiatives

- Implementation of the Housing Action Plan
- Social Housing Plan
- Social Service Inventory Mapping
- Zoning Bylaw amendments to regulate supportive recovery houses





# #1 Poll Question

***Were you aware of the Community Social Safety Action Plan initiatives before tonight?***



## #2 Poll Question

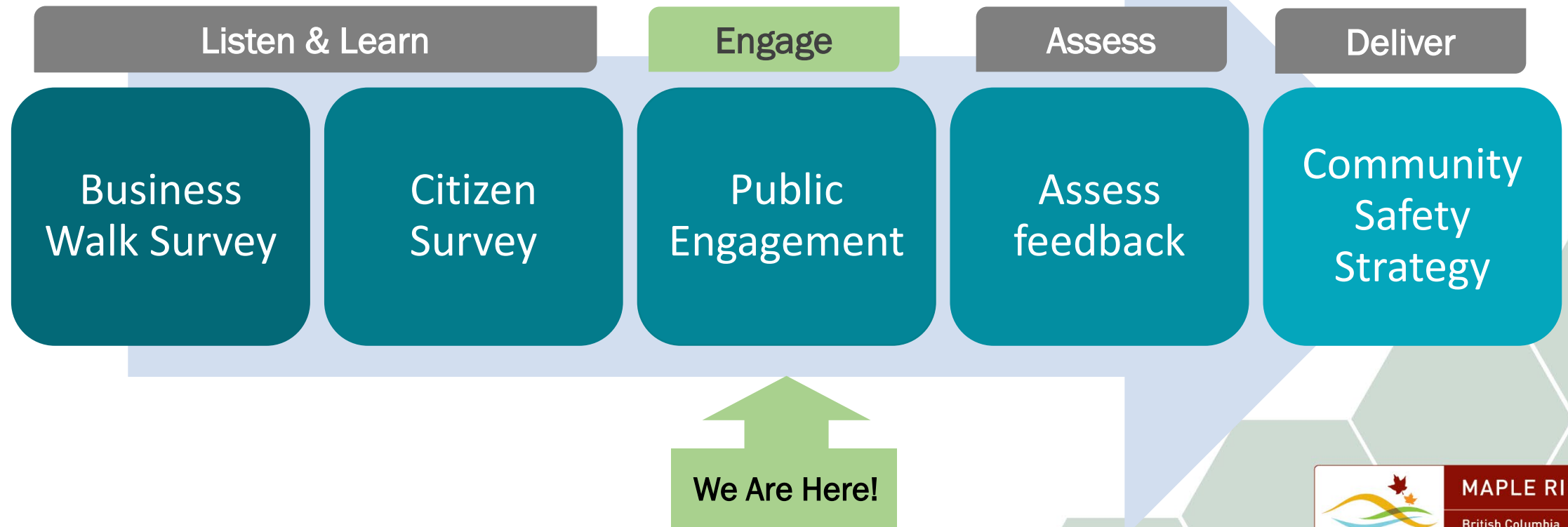
***Do you think these initiatives have been effective so far?***

# Discussion, Comments & Questions



# Next Steps

We are looking for feedback on how we can help make you feel safe, protected, engaged, and support your well-being in public spaces



# How To Provide Input

- Participate in the community dialogue
  - Email: [leadtogether@mapleridge.ca](mailto:leadtogether@mapleridge.ca)
- Visit the project website: [www.mapleridge.ca/2370](http://www.mapleridge.ca/2370)
- Fill out the survey!
  - Available online or paper on request till July 31<sup>st</sup>.
- Attend one of the Virtual Neighbourhood Meetings
  - 1 more meetings after tonight (July 28<sup>th</sup>)
- Attend the Virtual Learning Event: Q&A with an Expert Panel
  - July 29<sup>th</sup> from 7:00 – 8:30pm over zoom.
- Speak with staff at a Community Pop-Up

# Thank You!

**Let's Talk Community Safety**

**[mapleridge.ca/2370](https://mapleridge.ca/2370)**

**[leadtogether@mapleridge.ca](mailto:leadtogether@mapleridge.ca)**

