

Welcome!

LEAD Maple Ridge

Let's Talk Community Safety



MAPLE RIDGE
British Columbia

Before Getting Started

- We are here to share perspectives, listen, and learn
- There will be **zero tolerance** for those who negatively characterize, stereotype, or discriminate against individuals (based on race, ethnicity, national origin, sexual orientation, gender identity, religious affiliation, or different ability)
 - Anyone who does so will be removed at the discretion of our technical team and moderator
- Be as present as possible – turn on video to participate in discussion
- If you've asked a question or shared a comment, ensure that new voices are heard before you contribute again



Test Poll Question

***What is your favourite
kind of cake?***



Agenda

- Staff Introductions
- Background information of the Community Social Safety Initiative (CSSI)
- Overview of the CSSI Action Plan
- Challenges and opportunities
- Next Steps

Who We Are

- **Christina Crabtree**
General Manager of Corporate Services
- **Chad Cowles**
Manager of Community Social Safety Initiative
- **Lisa Zosiak**
Manager of Community Planning
- Representatives from Community Planning, Engineering, Recreation & Culture, and Park Operations.

Why We Are Here

- We listened to businesses, organizations, and community, neighbourhood members regarding their safety concerns.
- Council listened as well and created an interim Community Social Safety Action Plan while the City organized this process.
- Community Safety is a top strategic priority for Mayor and Council.
- Now we are looking to further develop and expand the Community Social Safety Action Plan with your help.



Background Information

Community Social Safety Initiative (CSSI)

WHAT

Feeling safe and
engaged

Feeling protected

Feeling support for
personal well-being

HOW

L
Listen

E
Engage

A
Assess

D
Deliver

WHY

Build Community
Resilience

Achieve
Community
Well-Being

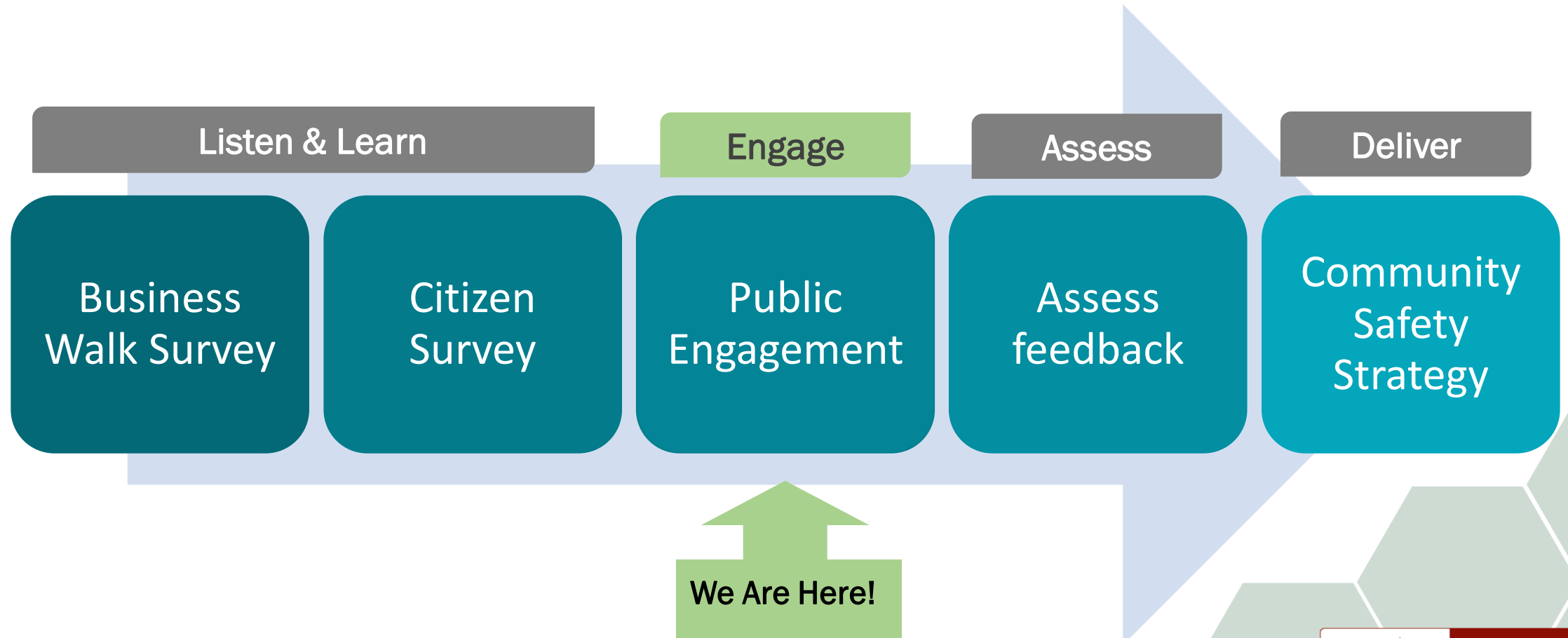
Increase Support for
Each Other



MAPLE RIDGE

British Columbia

LEAD Process



What Have We Done So Far?

Community Safety Action Plan

1. Citizens Feel Safe and Are Engaged in the Community

- Clean Streets and Walkways
- Vibrant Downtown
- Enhanced Volunteer Programs

2. Citizens are Protected

- Visibility/Response
- Protective Services

3. Citizens' well-being is supported

- Alternate Forms of Justice
- Corrections
- Housing



Community Safety Action Plan

1. To Help Citizens Feel Safe and are Engaged in the Community

Clean Street and Walkways

- Lock Out Crime Through Environmental Design
- Enhanced early morning cleanup services
- Needle removal training
- Created Community Safety Officers section

Community Safety Action Plan

1. To Help Citizens Feel Safe and are Engaged in the Community (continued)

Enhanced Volunteer Programs

- Enhanced Block Watch Communications
- Integrated Safety Ambassador Team (ISAT)

Vibrant Downtown

- Light Alleyways
- Downtown Activations
- Town Centre Visioning

Community Safety Action Plan

2. To Help Protect Citizens

Visibility and Response

- Tiered enforcement and enhanced visibility
- RCMP Proactive Foot-beat file
- RCMP Extended On Site Visibility
- Uniformed Community Response Unit Bike Patrol
- Safer Streets Bylaw

Community Safety Action Plan

3. To Help Support Citizen's Well-Being

Alternate Forms of Justice

- Restorative Justice
- Transitional Services
- Integrated Court



Community Safety Action Plan

3. To Help Support Citizen's Well-Being



Ours to Share!



Ministry of Social Development and Poverty Reduction



Ministry of Public Safety and Solicitor General



Chamber of Commerce
Maple Ridge Pitt Meadows



Housing Initiatives

- Implementation of the Housing Action Plan
- Social Housing Plan
- Social Service Inventory Mapping
- Zoning Bylaw amendments to regulate supportive recovery houses



#1 Poll Question

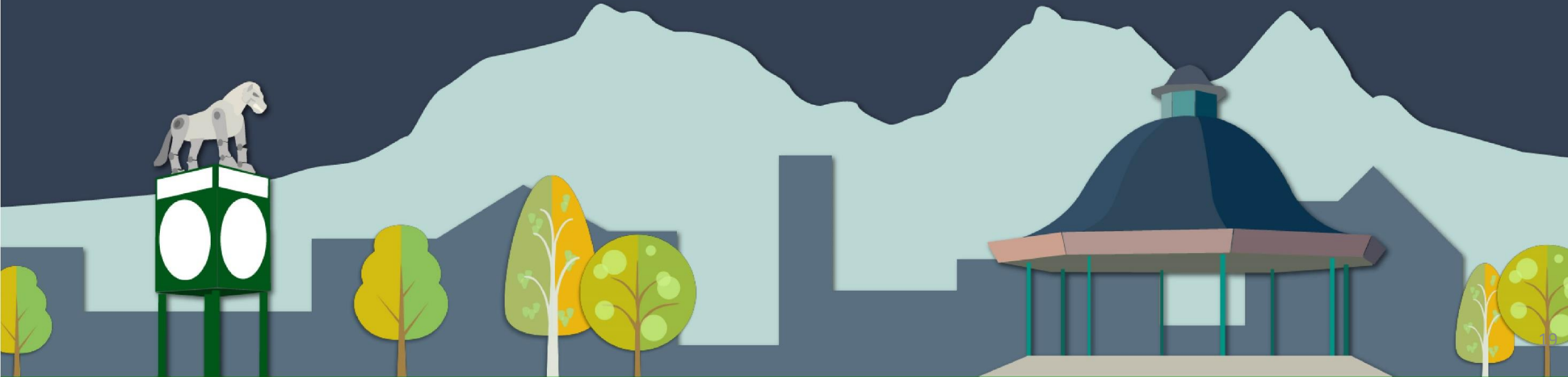
Were you aware of the Community Social Safety Action Plan initiatives before tonight?



#2 Poll Question

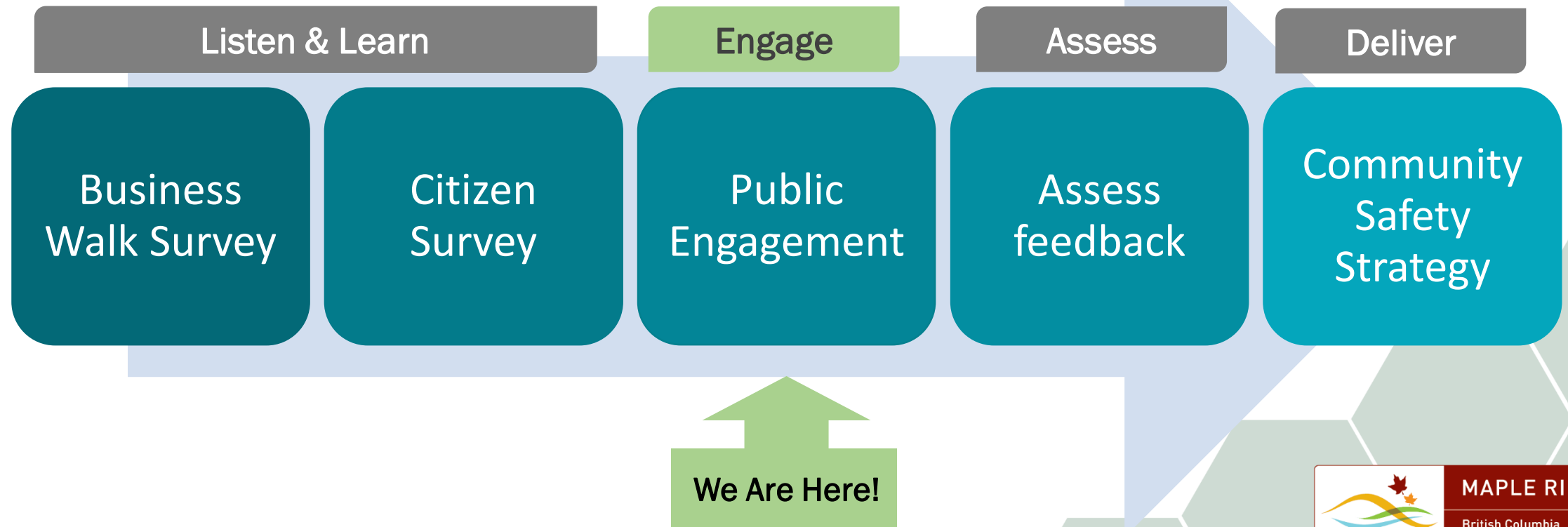
Do you think these initiatives have been effective so far?

Discussion, Comments & Questions



Next Steps

We are looking for feedback on how we can help make you feel safe, protected, engaged, and support your well-being in public spaces



How To Provide Input

- Participate in the community dialogue
 - Email: leadtogether@mapleridge.ca
- Visit the project website: www.mapleridge.ca/2370
- Fill out the survey!
 - Available online or paper on request till July 31st.
- Attend one of the Virtual Neighbourhood Meetings
 - 4 more meetings after tonight (July 21st till the 28th)
- Attend the Virtual Learning Event: Q&A with an Expert Panel
 - July 29th from 7:00 – 8:30pm over zoom.
- Speak with staff at a Community Pop-Up

Thank You!

Let's Talk Community Safety

mapleridge.ca/2370

leadtogether@mapleridge.ca



MAPLE RIDGE
British Columbia