

Welcome!

LEAD Maple Ridge

Let's Talk Community Safety



MAPLE RIDGE

British Columbia

Before Getting Started

- We are here to share perspectives, listen, and learn
- There will be **zero tolerance** for those who negatively characterize, stereotype, or discriminate against individuals (based on race, ethnicity, national origin, sexual orientation, gender identity, religious affiliation, or different ability)
 - Anyone who does so will be removed at the discretion of our technical team and moderator
- Be as present as possible – turn on video to participate in discussion
- If you've asked a question or shared a comment, ensure that new voices are heard before you contribute again



Test Poll Question

***What is your favourite
kind of cake?***



Agenda

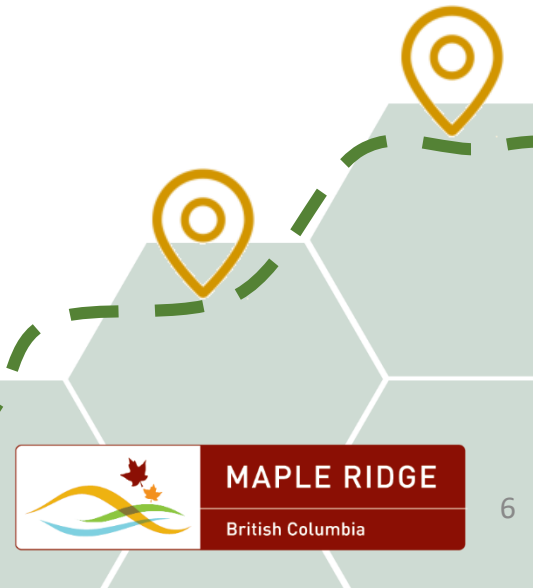
- Staff Introductions
- Background information of the Community Social Safety Initiative (CSSI)
- Overview of the CSSI Action Plan
- Challenges and opportunities
- Next Steps

Who We Are

- **Christina Crabtree**
General Manager of Corporate Services
- **Chad Cowles**
Manager of Community Social Safety Initiative
- **Lisa Zosiak**
Manager of Community Planning
- Representatives from Community Planning, Engineering, Parks, Recreation & Culture.

Why We Are Here

- We listened to businesses, organizations and community, neighbourhood members regarding their safety concerns.
- Council listened as well and created an interim Community Social Safety Action Plan while the City organized this process.
- Community Safety is a top strategic priority for Mayor and Council.
- Now we are looking to further develop and expand the Community Social Safety Action Plan with your help.



Types of Safety

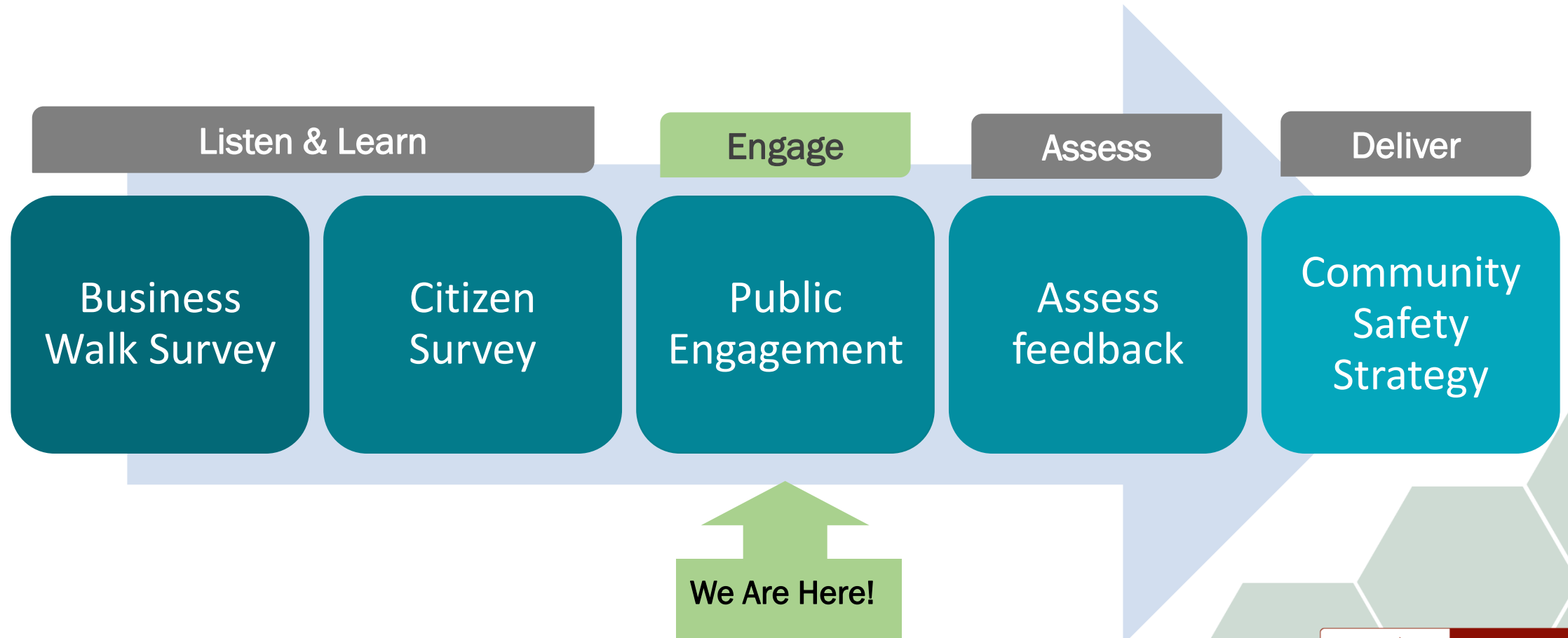
- **Community Safety** – *related to experiences in public spaces*
- **Public Safety** - *agencies like police, fire, ambulance and search and rescue teams*
- **Transportation Safety** – *related to how you move around the city*
- **Personal Safety** – *related to your feeling of safety when at work, home or community*

Background Information





LEAD Process



What Have We Done So Far?

Community Safety Action Plan

1. Citizens Feel Safe and Are Engaged in the Community

- Clean Streets and Walkways
- Vibrant Downtown
- Enhanced Volunteer Programs

2. Citizens are Protected

- Visibility/Response
- Protective Services

3. Citizens' well-being is supported

- Alternate Forms of Justice
- Corrections
- Housing



MAPLE RIDGE

British Columbia

Community Safety Action Plan

1. To Help Citizens Feel Safe and are Engaged in the Community

Town Centre Clean Street and Walkways

- Lock Out Crime Through Environmental Design
- Enhanced early morning cleanup services
- Needle removal training
- Created Community Safety Officers section

Community Safety Action Plan

1. To Help Citizens Feel Safe and are Engaged in the Community (continued)

Enhanced Volunteer Programs

- Enhanced Block Watch Communications
- Integrated Safety Ambassador Team (ISAT)

Vibrant Downtown

- Light Alleyways
- Downtown Activations
- Town Centre Visioning

Community Safety Action Plan

2. To Help Protect Citizens

Visibility and Response

- Tiered enforcement and enhanced visibility
- RCMP Proactive Foot-beat file
- RCMP Extended On Site Visibility
- Uniformed Community Response Unit Bike Patrol
- Safer Streets Bylaw

Community Safety Action Plan

3. To Help Support Citizen's Well-Being

Alternate Forms of Justice

- Restorative Justice
- Transitional Services
- Integrated Court



Community Safety Action Plan

3. To Help Support Citizen's Well-Being



Ours to Share!



Housing Initiatives

- Implementation of the Housing Action Plan
- Social Housing Plan
- Social Service Inventory Mapping
- Zoning Bylaw amendments to regulate supportive recovery houses



#1 Poll Question

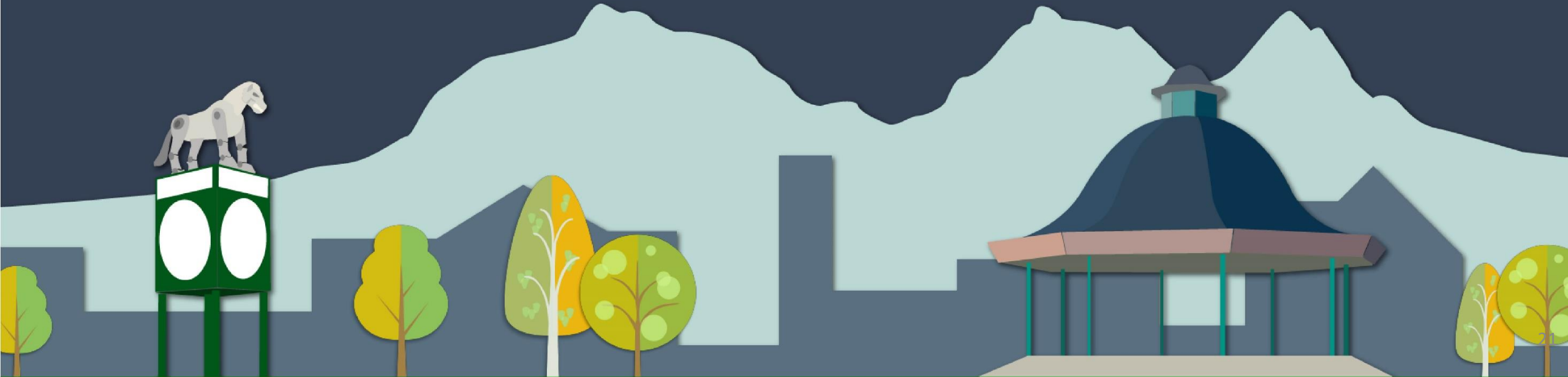
***Were you aware of the Community
Social Safety Action Plan initiatives
before tonight?***



#2 Poll Question

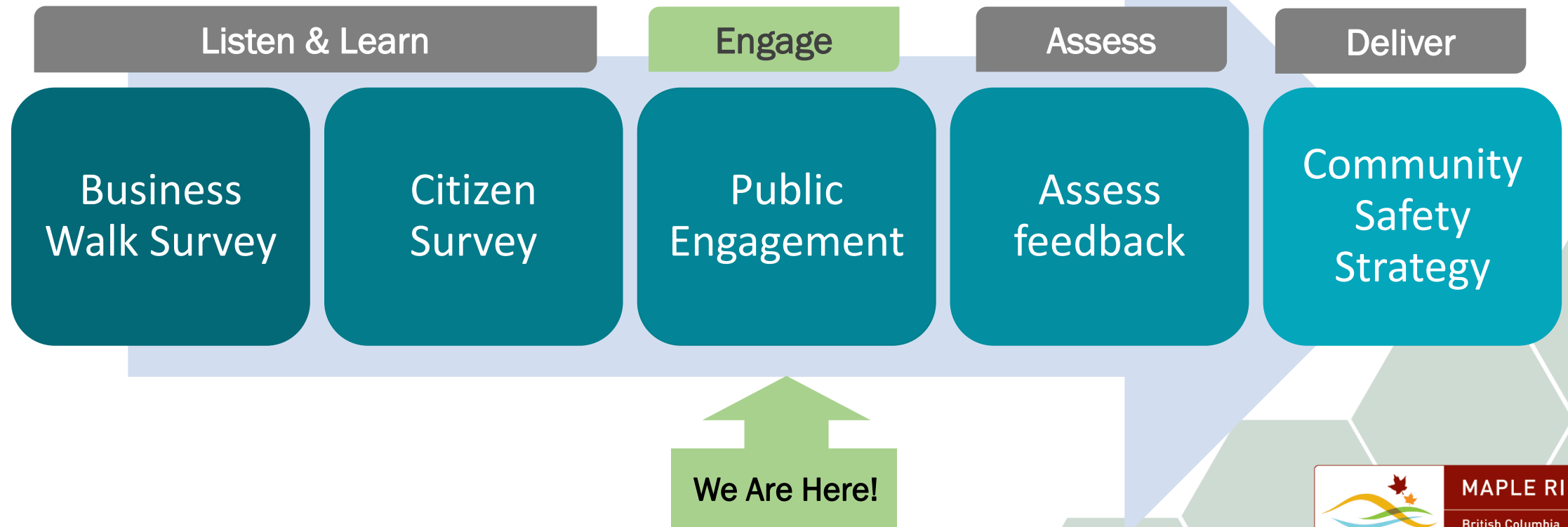
Do you think these initiatives have been effective so far?

Discussion, Comments & Questions



Next Steps

We are looking for feedback on how we can help make you feel safe, protected, engaged, and support your well-being in public spaces



How To Provide Input

- Participate in the community dialogue
- Visit the project website: www.mapleridge.ca/2370
- Fill out the survey!
 - Available online or paper on request till July 31st.
- Attend one of the Virtual Neighbourhood Meetings
 - 7 more meetings after tonight (till the 28th)
- Attend the Virtual Learning Event: Q&A with an Expert Panel
 - July 29th from 7:00 – 8:30pm over zoom.
- Speak with staff at a Community Pop-Up

Thank You!

Let's Talk Community Safety

mapleridge.ca/2370

leadtogether@mapleridge.ca



MAPLE RIDGE
British Columbia