

# GROWING TOGETHER

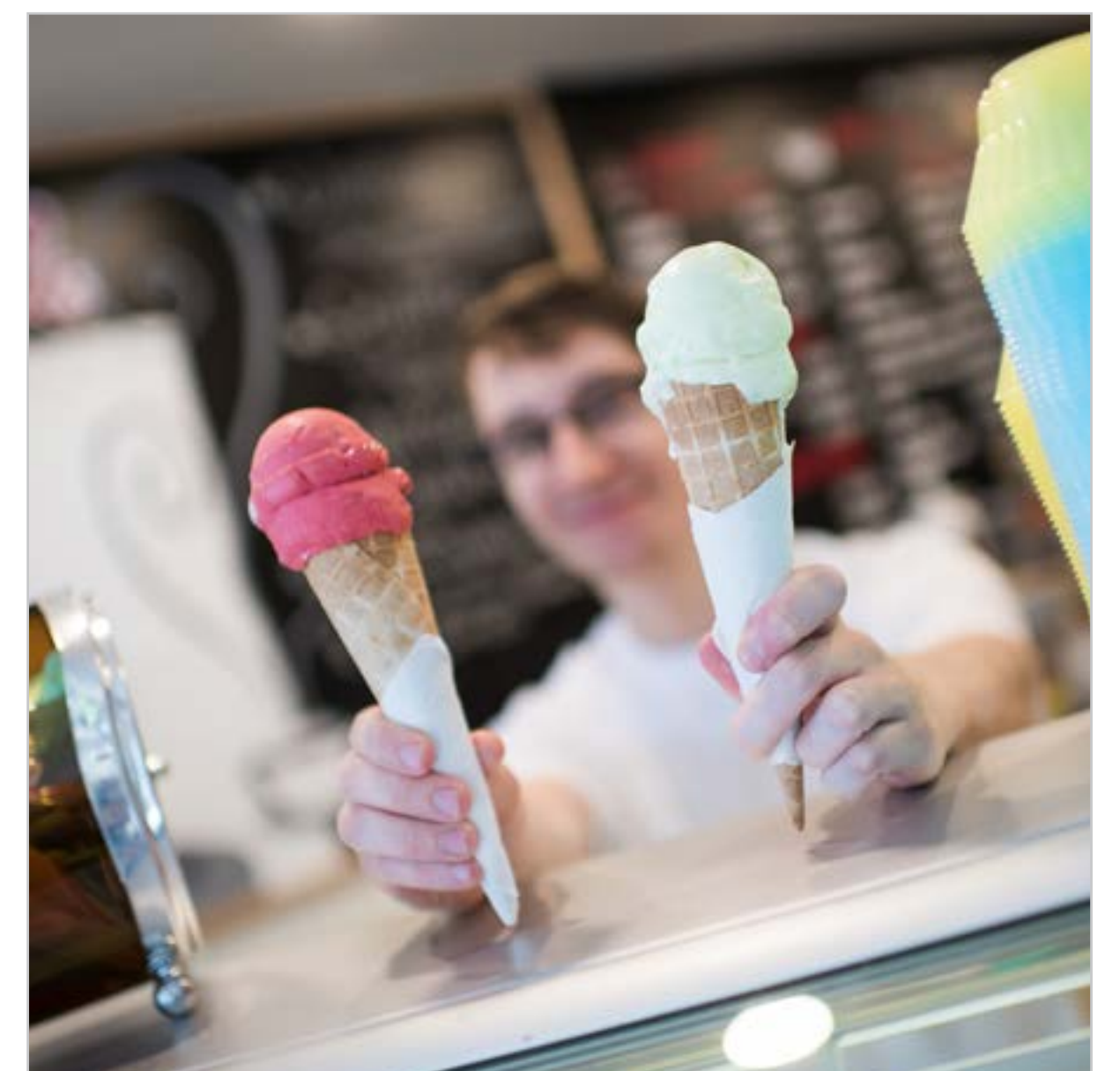
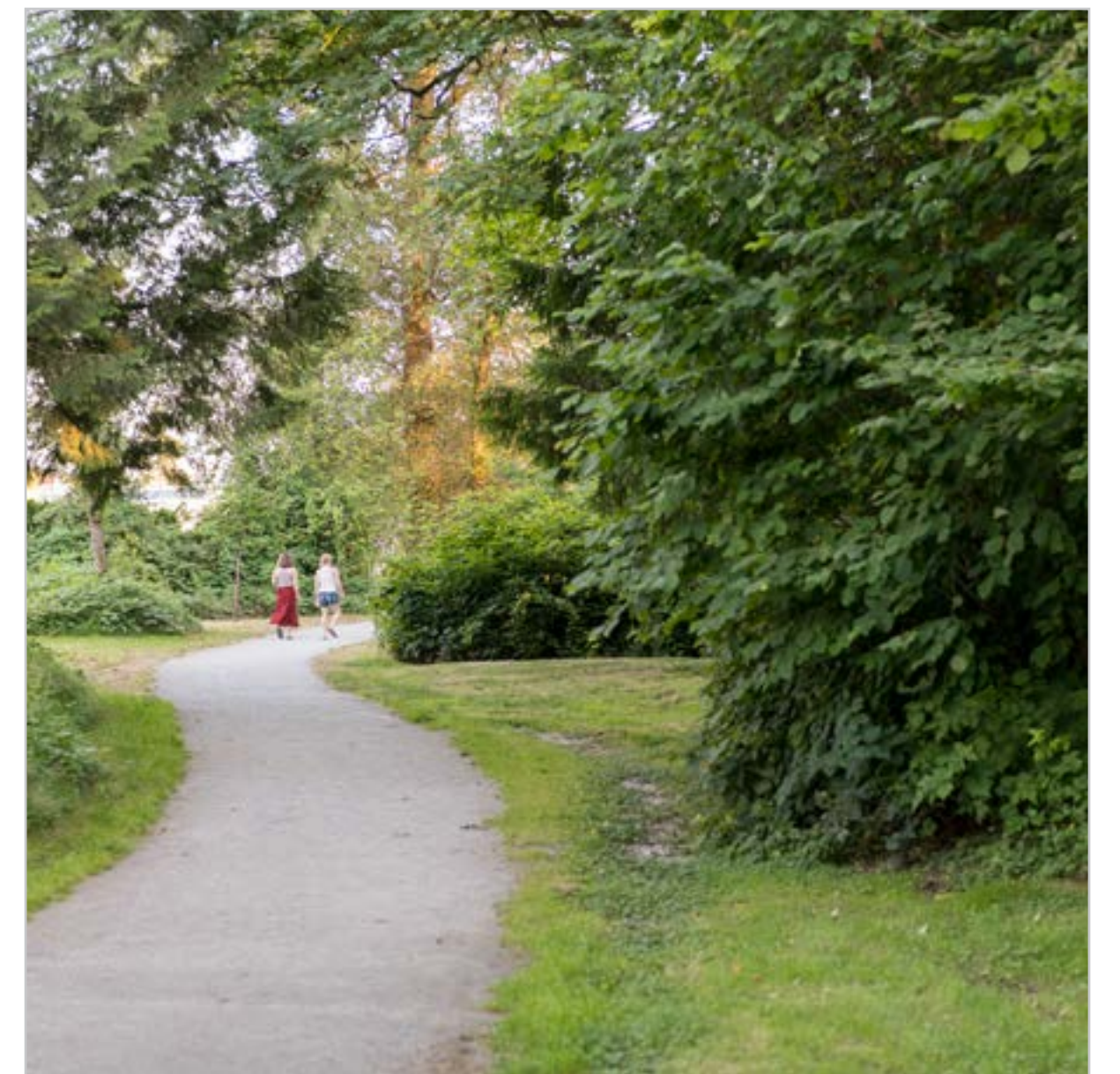
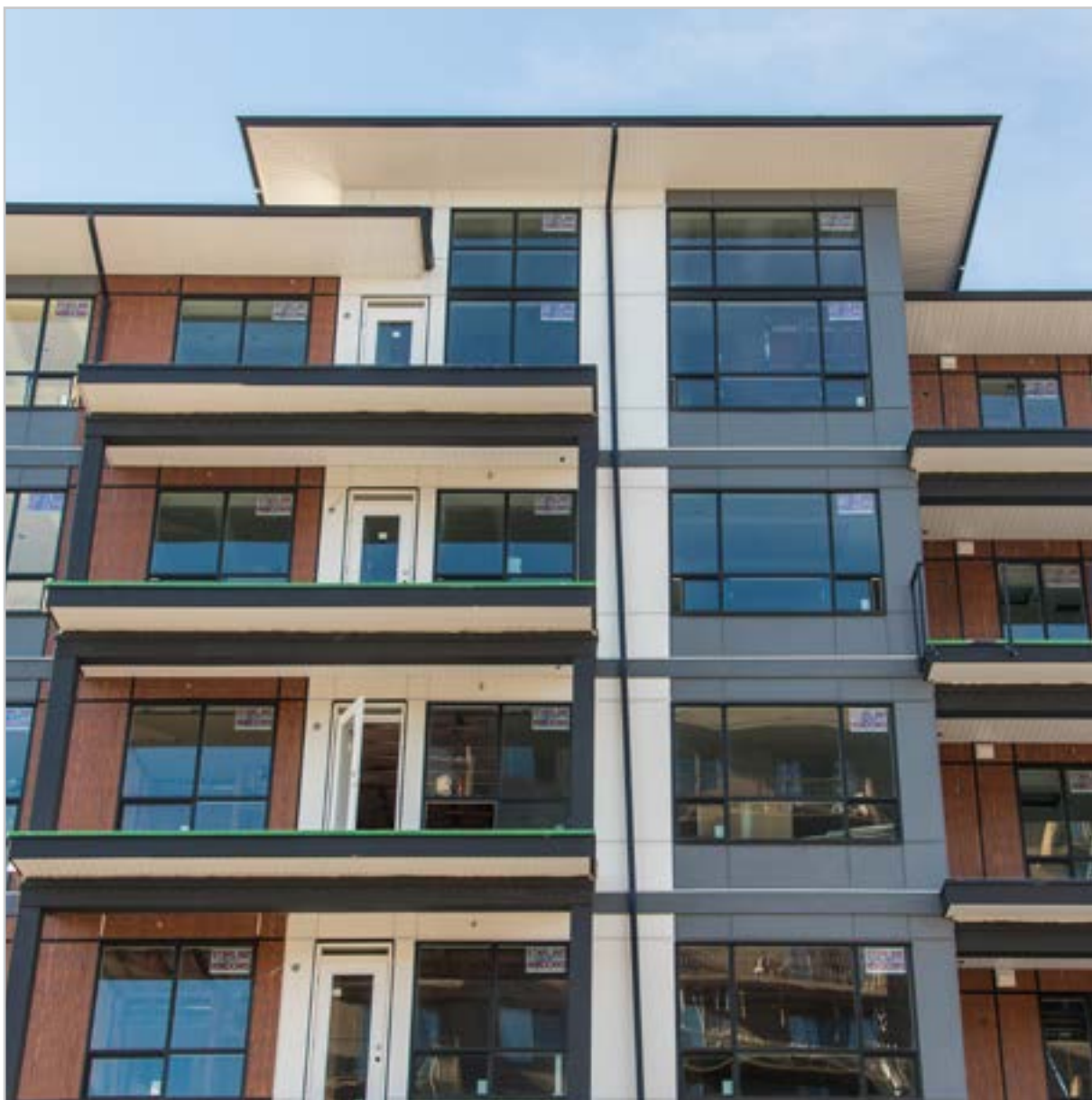
## VISIONING YOUR TOWN CENTRE

### Why are we doing this?

The Town Centre Area Plan was adopted in 2008 with a vision for creating more density, mixed-uses, and green spaces while creating a pedestrian-oriented environment.

With this Plan in place, the Town Centre of Maple Ridge has been experiencing a significant amount of redevelopment and change over the past five to ten years.

Maple Ridge Council has recognized this growth and wants to ensure that the evolution of the Town Centre is positive and leads to greater vibrancy within this core part of the community.



**What do you like most about your Town Centre?**

Share your thoughts!  
Put your idea on a sticky note and have it placed on the board!

**What are your top 3 challenges for the Town Centre?**

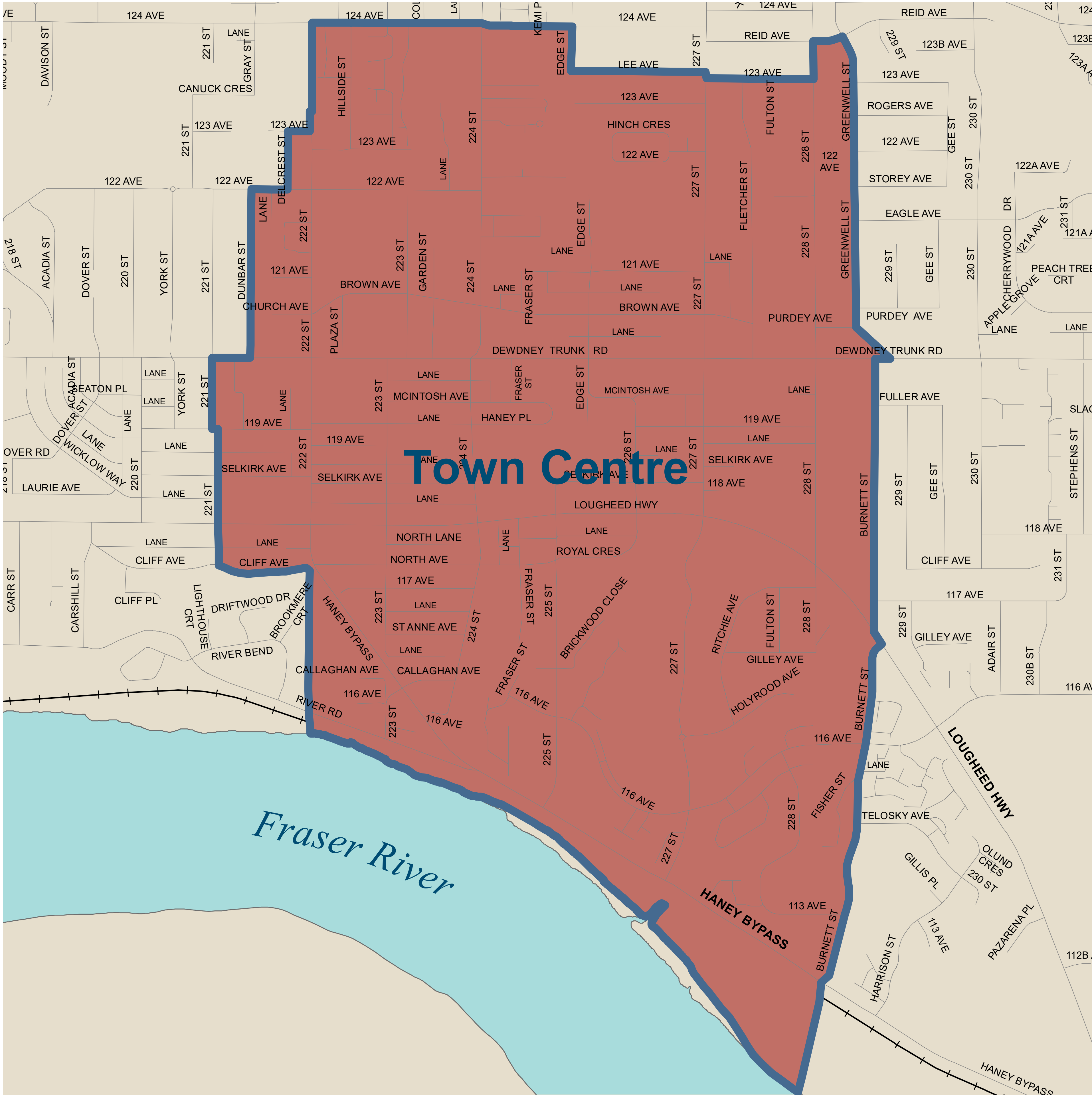
Share your thoughts!  
Put your idea on a sticky note and have it placed on the board!

LIVE

WORK

PLAY

# GROWING TOGETHER



**WHAT ATTRIBUTES OF A GREAT PLACE DO YOU THINK SHOULD BE ADDED TO OUR TOWN CENTRE?**

Share your thoughts!  
Put your idea on a sticky note and have it placed on the board!

