



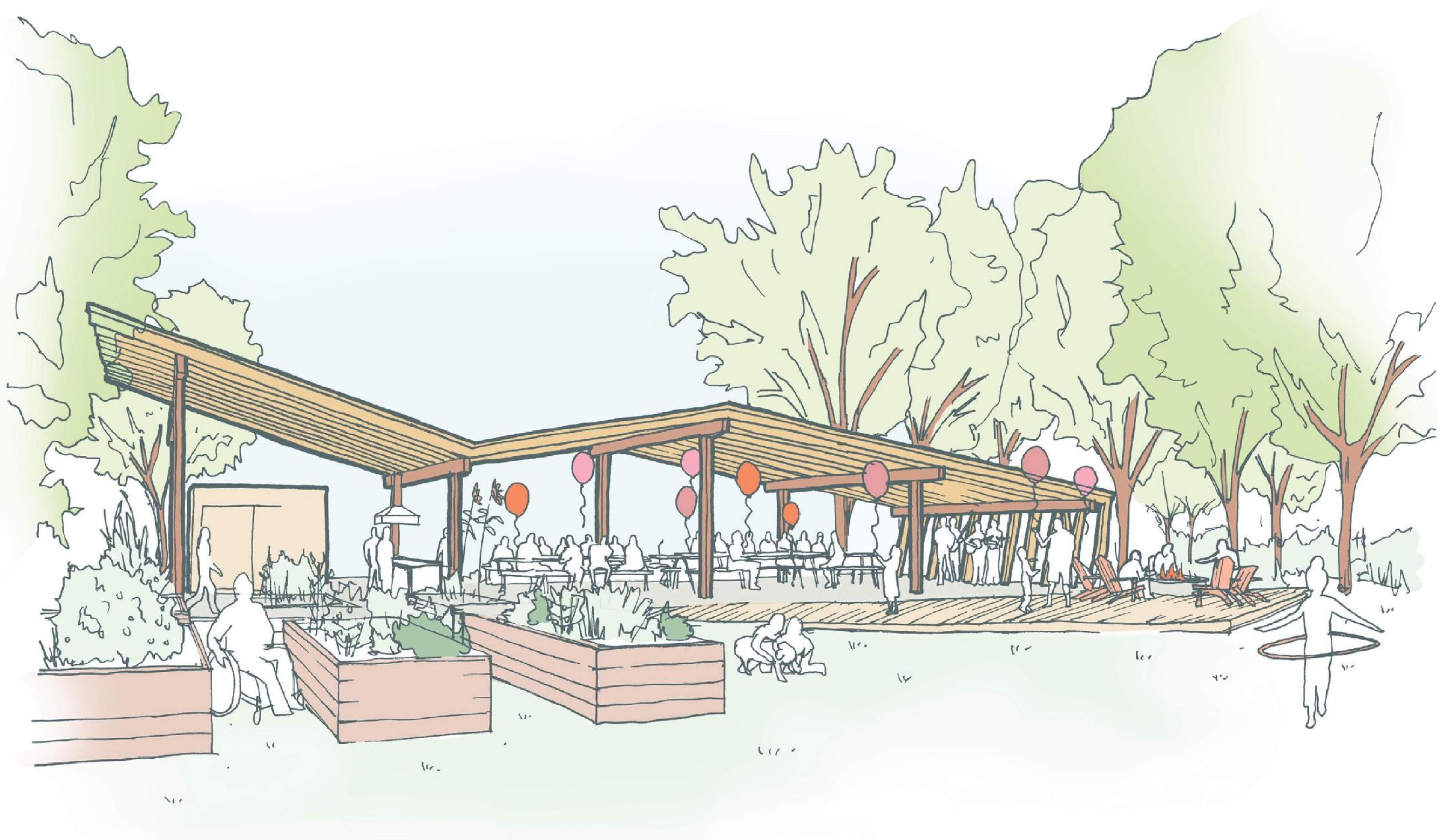
## PROJECT DESCRIPTION

The Parks, Recreation & Culture Infrastructure projects include a gathering place project in the Silver Valley area with the first being in the Blaney Hamlet neighbourhood. This gathering place is proposed to be located adjacent to the new neighbourhood park on 230A Street. Additional land was acquired in 2020 to support this initiative.

In addition to developing a gathering place at this location, the City is exploring developing youth action amenities along with a bike skills park as a sponsored feature.

We would like to hear your thoughts on desired amenities and programming for the gathering place, as well as to hear what kind of youth action amenities may be desired.

Due to Covid-19, public consultation will be through online engagement as well as select opportunities to meet in person with physical distancing protocols in place. Please see [www.mapleridge.ca/1441](http://www.mapleridge.ca/1441) for the process to connect in person.





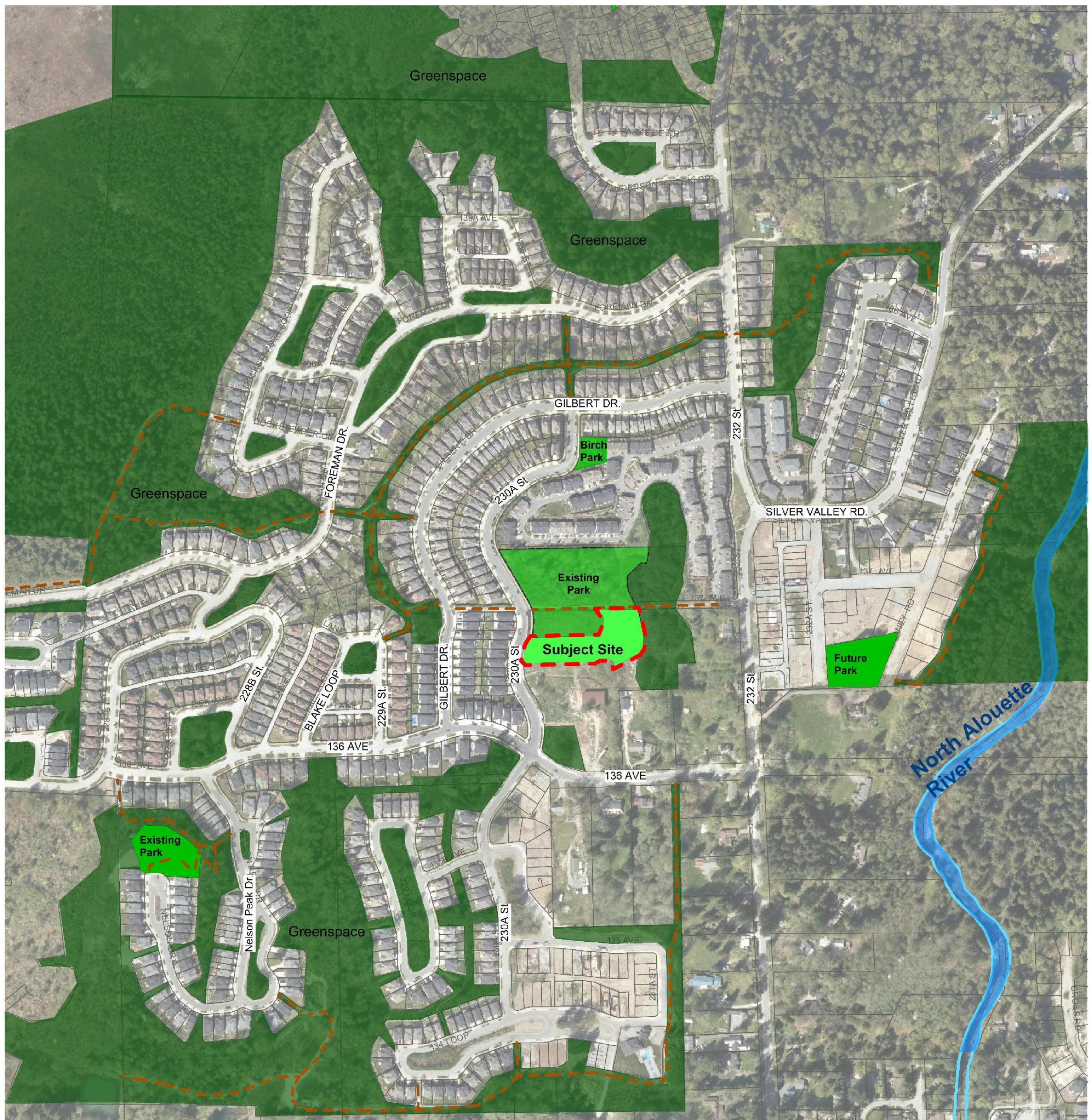


## NEIGHBOURHOOD CONTEXT

The subject site is located in the Blaney Hamlet neighbourhood of Silver Valley, immediately to the south of the neighbourhood park developed in 2019.

### Legend

- Trails and Walkways
- Existing and Future Parks
- Greenspace areas
- Subject Site





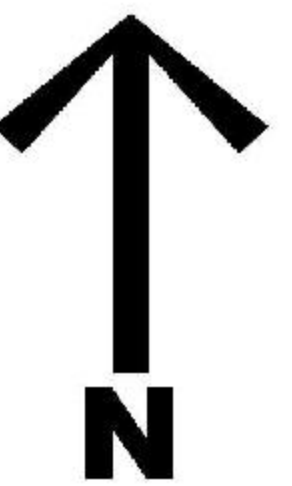


## PRELIMINARY PARK PROGRAM

The program includes the three main components of this project, the gathering place, youth action amenities and bike skills area. The adjacent lands to the south, once developed are anticipated to include a roadway as shown as well as connections into the site. Existing nearby environmental features will also be considered within the design process to address storm water management and drainage.

### Legend

— Project Limit





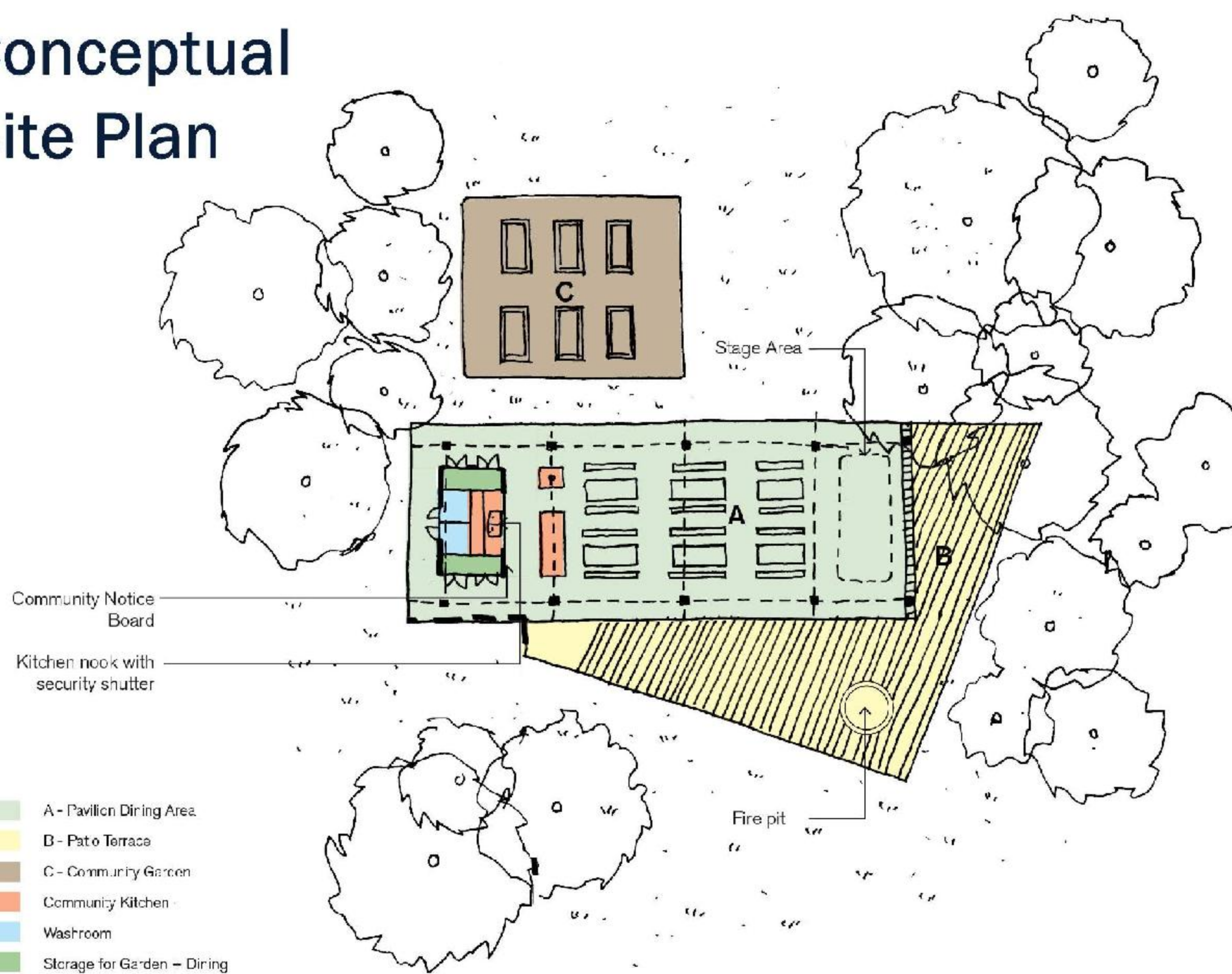


## GATHERING PLACE

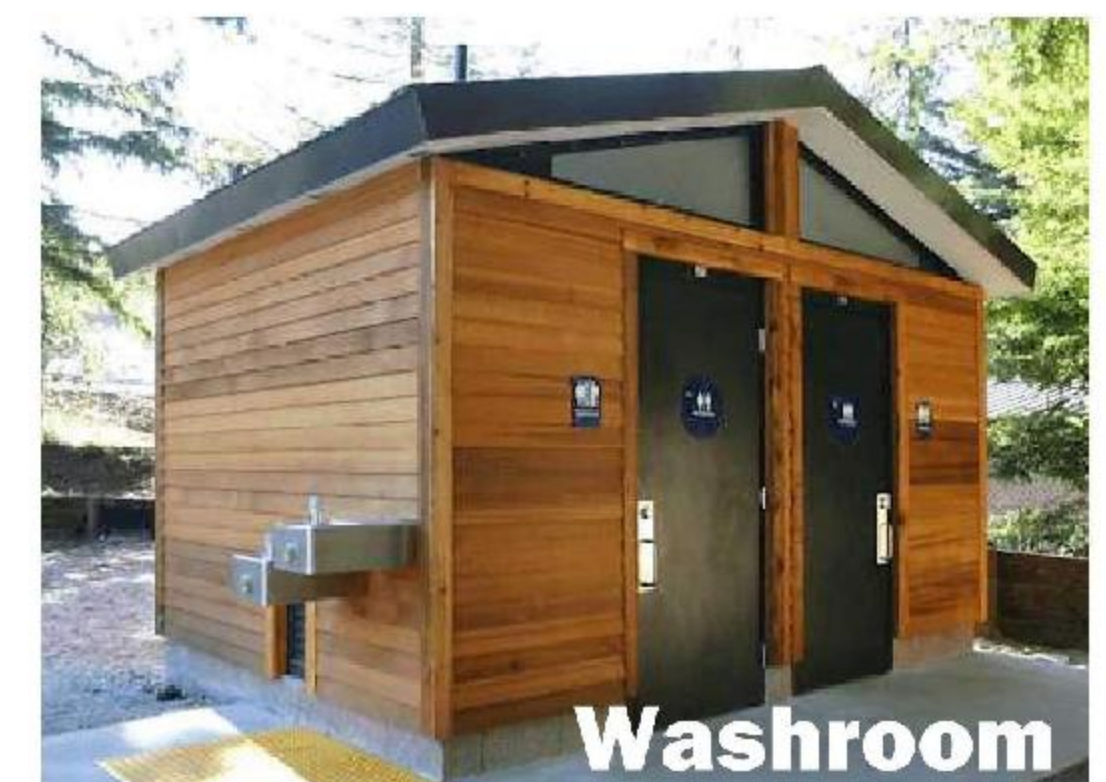
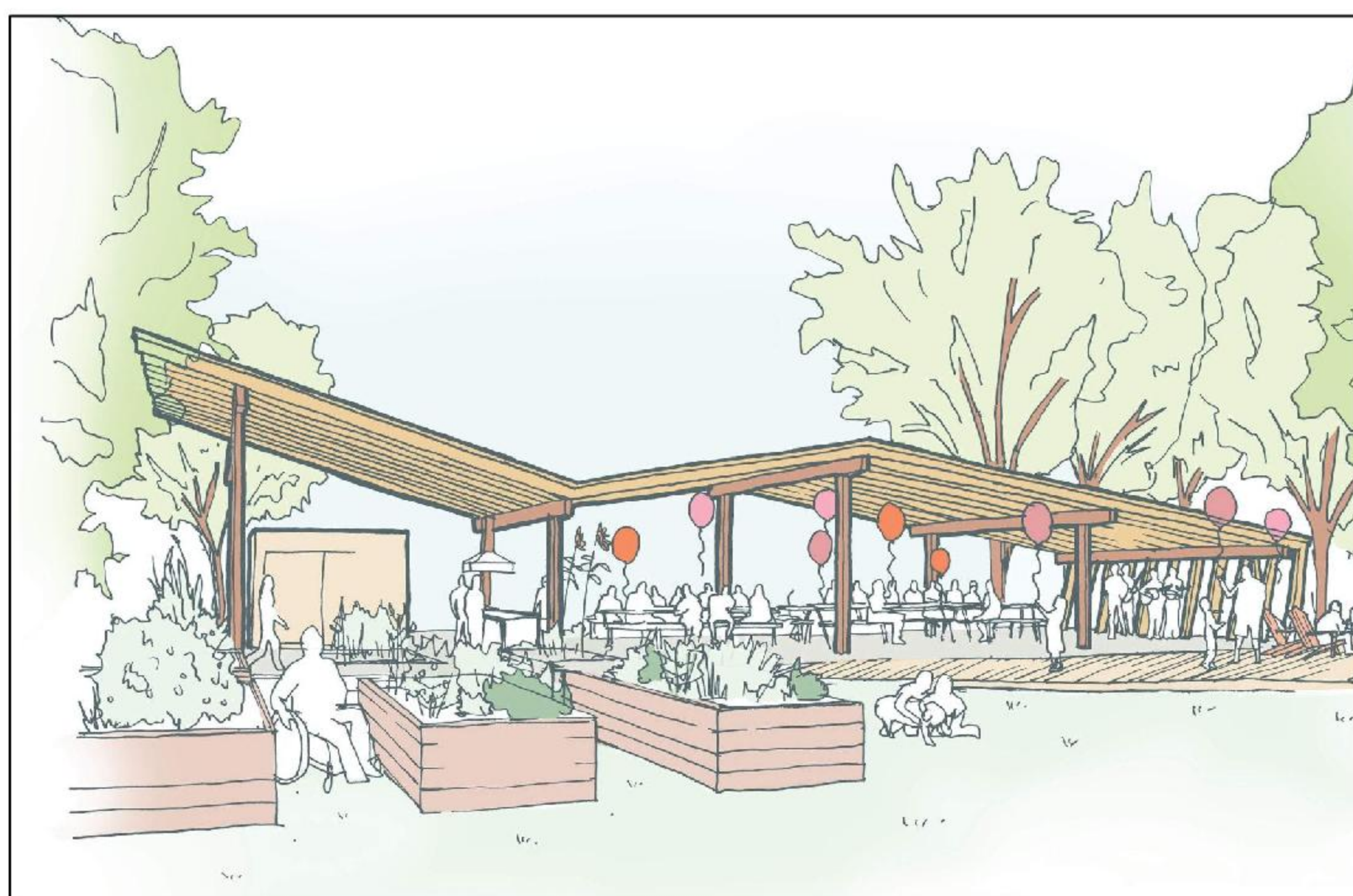
The gathering place is envisioned to be an outdoor pavilion intended to support Silver Valley residents by providing opportunity for activities, neighbourhood celebrations, community gardens and social gatherings.

**How do you envision using the gathering place?**

### Conceptual Site Plan



### Precedent Images







## YOUTH ACTION AMENITIES

Youth action amenities include recreation features that appeal to youth. These amenities could contain a pump track, skateboard streetscape features, a bouldering wall, beach volleyball courts or parkour course elements.

**What would you like to see for youth action amenities in this location?**



**Skate course**

### Precedent Images



**Street skate features**



**Beach volleyball**



**Bouldering wall**



**Parkour course**



**Bouldering wall**



**Pump track**



**Pump track**



**Parkour course**





## BIKE SKILLS AREA

The City of Maple Ridge has been approached with a sponsorship opportunity to provide a bike skills park in the Silver Valley area. Bike skills parks provides opportunities to develop skills and increase experience for mountain bike riders, especially children and teens by facilitating learning and growth through a progression of features. Bike skills elements include features such as wooden bridges, progression trails, dirt pump tracks and teeter totters in the beginner and intermediate skill levels. Maple Ridge has one bike skills park, located in Albion Park, on 102 Avenue.

**Would you like to see a bike skills area to be part of this park development?**

**If yes, what are some features that you would like to see in a bike skills park?**



**Dirt pump track**

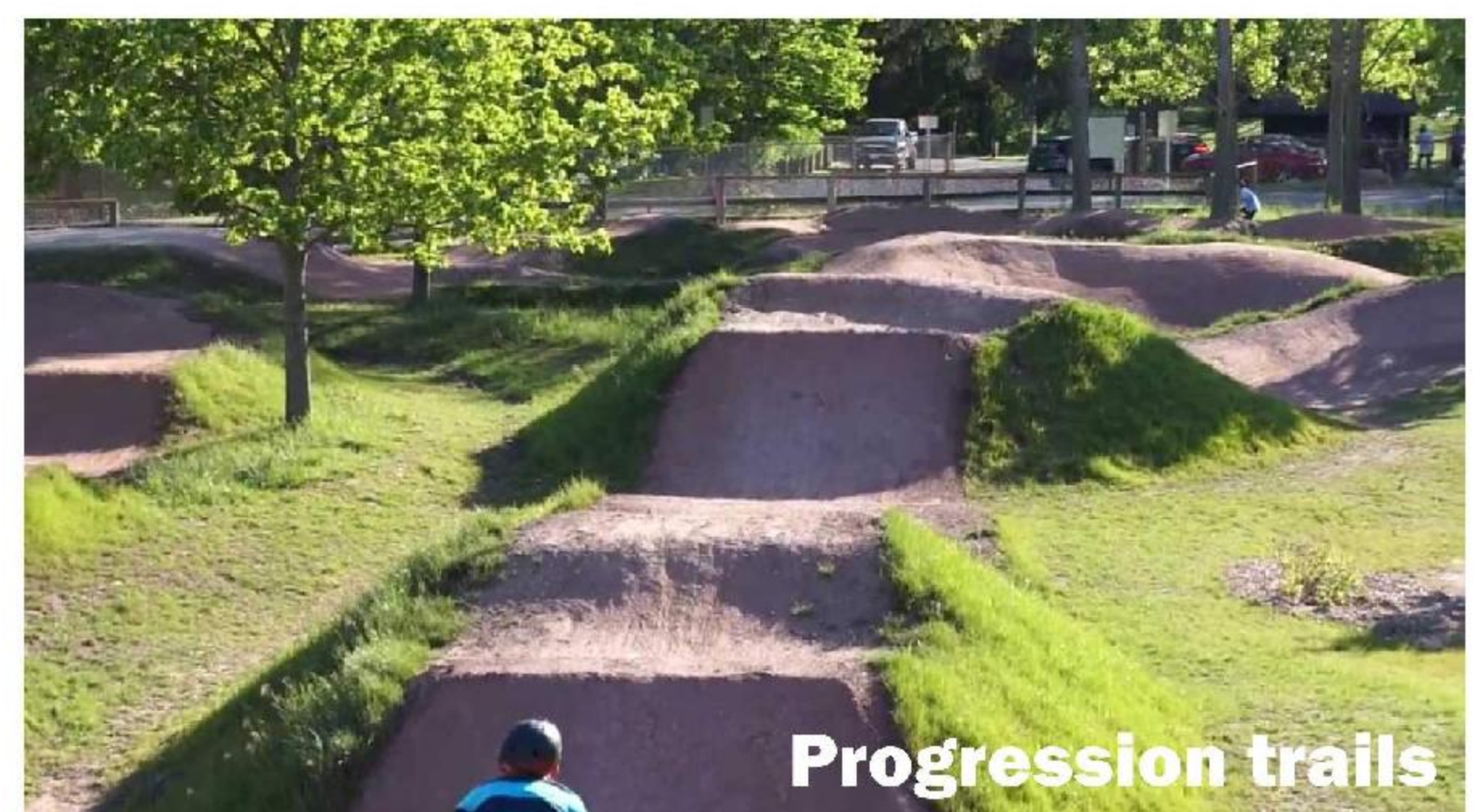
### Precedent Images



**Bridge features**



**Teeter totter**



**Progression trails**





## WE WOULD LIKE TO HEAR FROM YOU

Due to Covid-19, public consultation will be by way of online engagement through the webpage, online comment form and email, as well as select opportunities to meet in person with physical distancing protocols in place. Staff can answer questions through the phone or by email. Please see [www.mapleridge.ca/1441](http://www.mapleridge.ca/1441) to connect in person.

As first steps we will gather feedback from the community on the program of this gathering place.

### Project Timeline

<b>Phase 1:</b> <b>Public Engagement</b> Community Input    Summer 2020	<b>Phase 2:</b> <b>Concept Plan</b> Share with public, gather feedback  Sept/ Oct 2020	<b>Phase 3:</b> <b>Detailed Design</b> Design development  Fall 2020	<b>Phase 4:</b> <b>Park Construction</b>  Spring/Summer 2021
--	---	--	---

### Share Your Comments

Please take a moment to share your comments and thoughts with us by completing a comment form. Your comments will help us determine what amenities and the programing to include in the park concept plan.

### Next Steps

Your feedback will inform the conceptual design of the park. The park concept will be publicly shared in the Fall for the community to provide feedback on the concept plan. Check back at [www.mapleridge.ca/1441/Park-Development-Projects](http://www.mapleridge.ca/1441/Park-Development-Projects) for project updates.

