

What are We Trying to Achieve?

*Ensure that **citizens feel safe** and are not afraid to engage in their community, that **criminal activity is prevented or minimized**, that **people who need services can access them easily**, that agencies understand and are accountable for their role and that all of this occurs within the capacity of **local first responders and service providers**.*



Background

- **February 12, 2019**
 - Council Endorsed a High Level Process for Developing a Holistic Multi-disciplinary Community Safety Plan
- **May 7, 2019**
 - Council Endorsed Recommendations to Increase Security to Address Immediate Concerns
- **July 2, 2019**
 - Council Adopted a Framework, Identified Key Action Items and Endorsed Recommendations to
 - Fund Immediate Actions from Short and Medium Term Action Plan
 - Fund a Dedicated Resource to Support the Development of Community Safety Plan
 - Establish a Steering Committee and Develop Terms of Reference for Longer Term Initiatives



Community Social Safety Action Plan

Citizens Feel Safe and Are Engaged in the Community

- Clean Streets and Walkways
- Vibrant Downtown
- Enhanced Volunteer Programs

Citizens Are Protected

- Visibility and Response
- Protective Services

Citizens Well-Being is Supported

- Alternative Forms of Justice
- Housing
- Treatment and Recovery Options



**MAPLE RIDGE
BRITISH COLUMBIA**

Highlights

- **Clean Streets and Walkways**

- Additional Resources Dedicated to Clean Up Needles and Refuse in Town Centre

- **Enhanced Volunteer Programs**

- RCMP Volunteers Kicked Off Community Safety Tours
- Online Block Watch Information and Notifications

- **Vibrant Downtown**

- Programming Corridor Between Mall and GMYC
- Happenings in the Park – Wednesday, Thursday, Friday and Saturday





good
**VIBES
ONLY**

Highlights

- **Visibility and Response**

- Increased Security in the Town Centre
- Increased RCMP Visibility – Proactive Foot-beat file, Extended Onsite Visibility, UCRU Seasonal Bike Patrol
- Moving Forward on Coordinated and Tiered Approach to Enforcement and Engagement



Highlights

- **Coordinated/Tiered Approach to Enforcement & Engagement**
 - Bylaws, RCMP, Security and Parks, Recreation and Culture
 - Identifying Roles and Responsibilities For Response
 - Establishing Communications Protocol
 - Draft RFP - Enhance Security Approach by Integrating Ambassador Duties
 - Additional Bylaw Officers
 - Improved Radio Communications
 - Collecting and Collating Data





City of Maple Ridge Neighbourhood Safety Profile

Filters

Neighbourhood

Town Centre

Occurance Year

2019

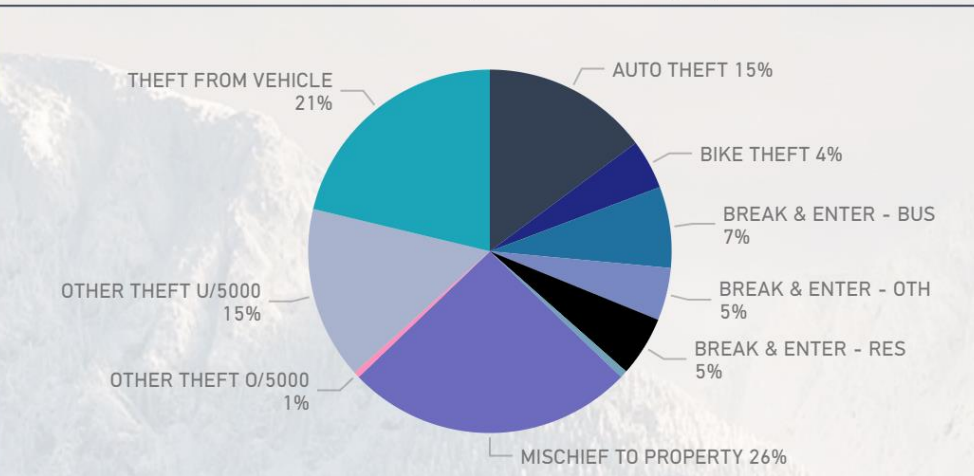
Offense Category

All

Offense

All

% of Incidents by Offense Category



By the Numbers

Total Number of Property Crimes for Neighbourhood

748

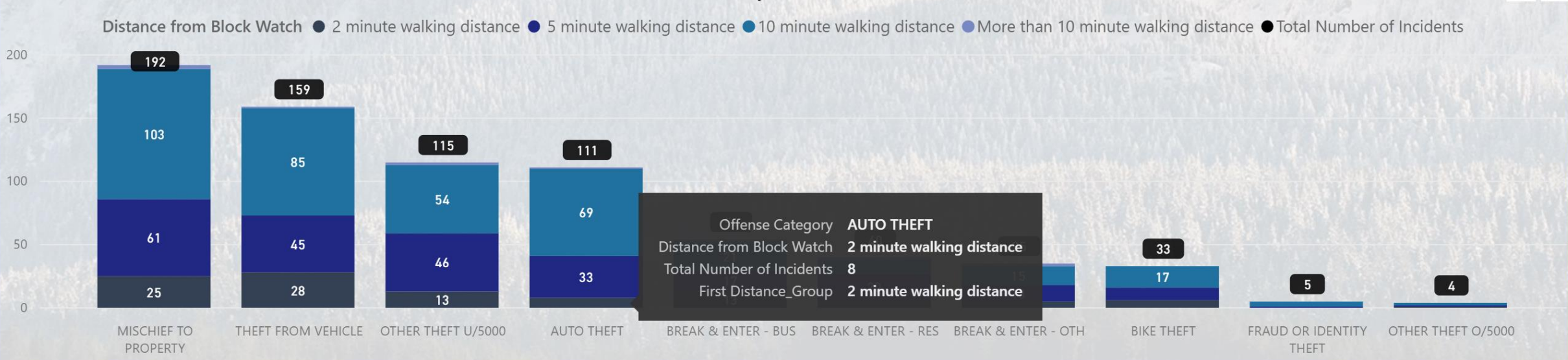
Total Number of Block Watch Areas for Neighbourhood

7

Related Links

- RCMP Block Watch Website
- Crime Map
- Neighbourhood Map

Number of Incidents By Distance from Block Watch





MAPLE RIDGE
BRITISH COLUMBIA

City of Maple Ridge Security Guard Incident Analysis

Month

Multiple selections



Week

Multiple selections



Weekday

All

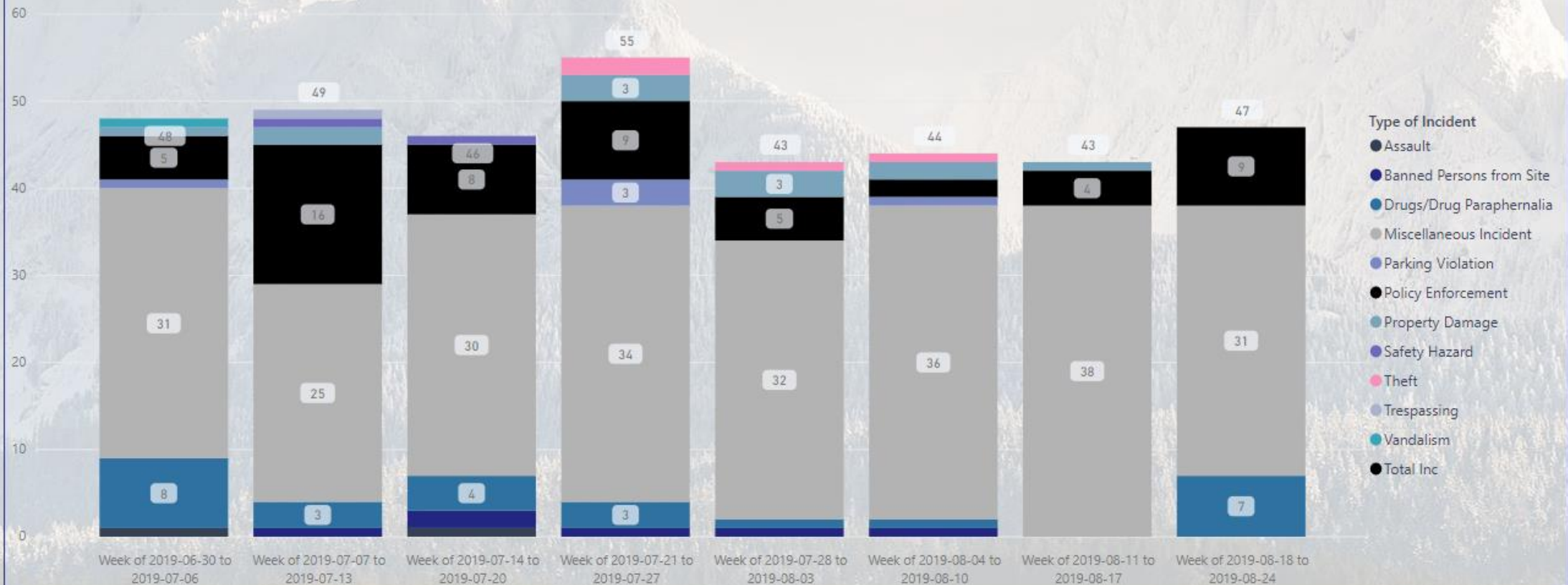


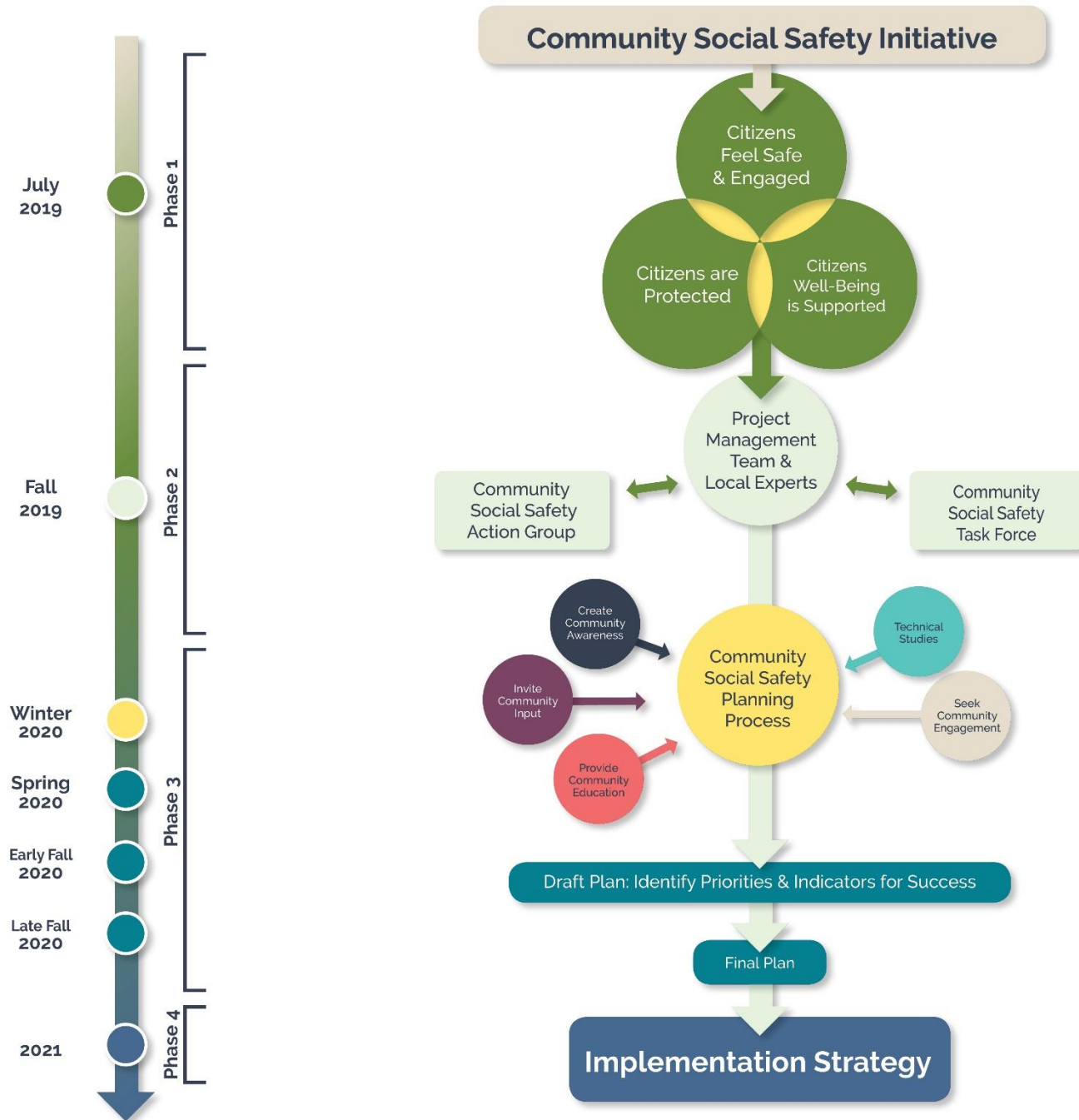
Type

All



Number of Incidents by Week and Type





COMMUNITY SOCIAL SAFETY INITIATIVE PROCESS

Community Social Safety Initiative

July 2019

Phase 1



Fall 2019

Phase 2



Fall 2019

Phase 2

Project
Management
Team &
Local Experts

Community
Social Safety
Task Force

Build
Partnerships

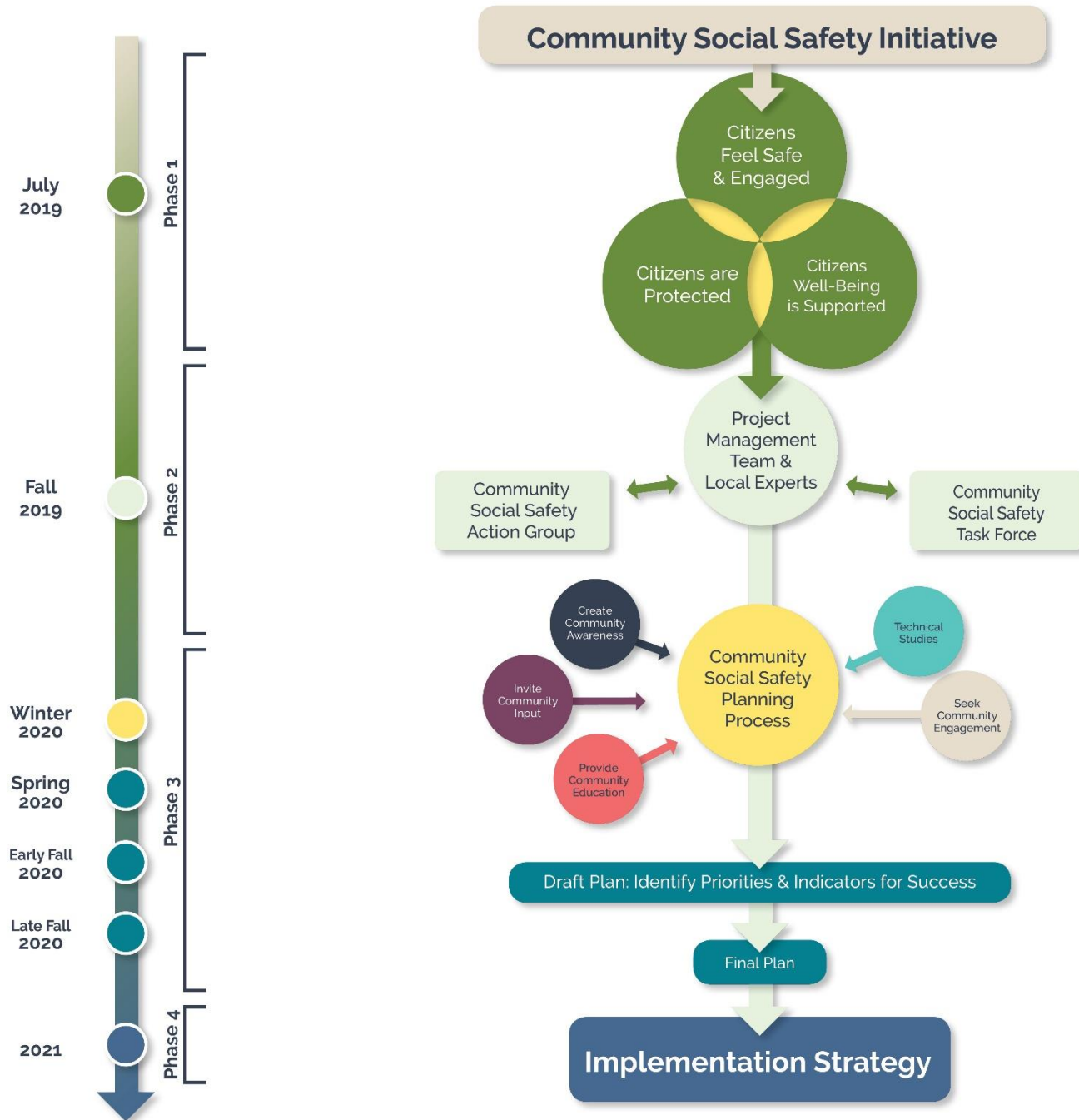
Share
Research &
Information

Identify
Opportunities
& Constraints

Work Better
on Common
Goals







COMMUNITY SOCIAL SAFETY INITIATIVE PROCESS