

NEIGHBOURHOOD AMENITIES

Visit mapleridge.ca/1676 for more information.

Email us at facilitytalk@mapleridge.ca with your questions.

4A | Silver Valley Neighbourhood Gathering Places

4B | Hammond Community Centre Improvements

4C | Ridge Canoe & Kayak Improvements

4D | Albion Neighbourhood Learning and Community Centre



**HAVE OPINIONS?
JOIN THE CONVERSATION.**

Use or download a QR Code app on your mobile device and scan this square.



4

SILVER VALLEY NEIGHBOURHOOD GATHERING PLACES



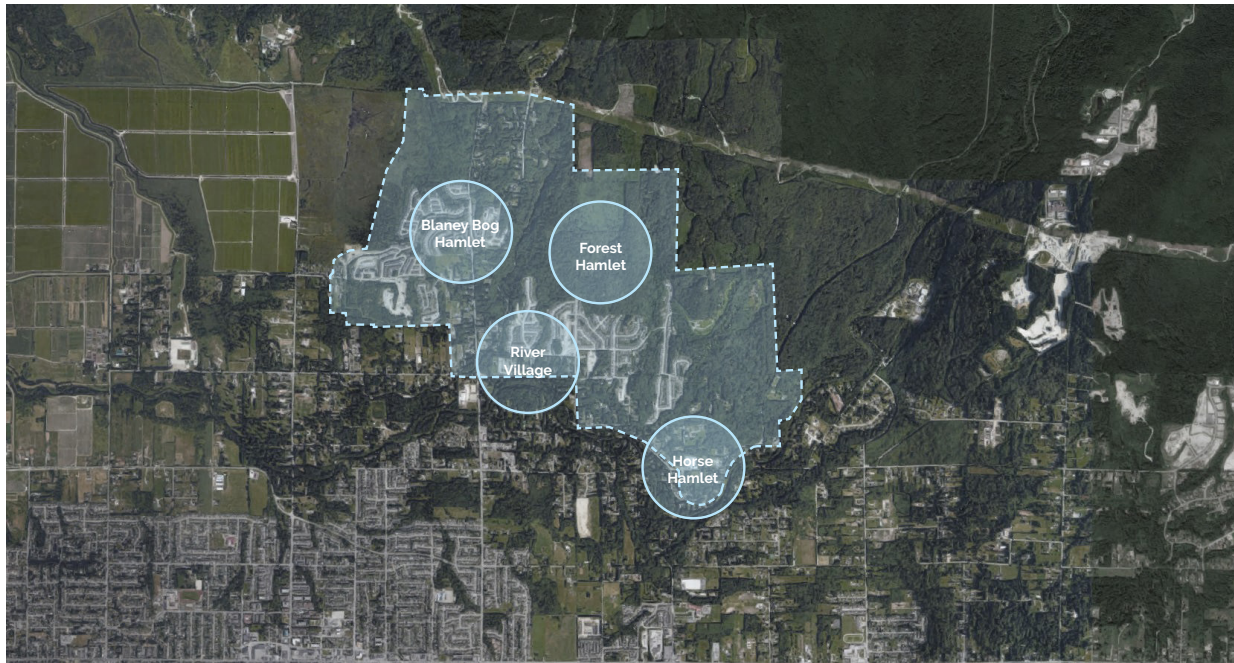
OVERVIEW

The Silver Valley Area lies at the outskirts of Maple Ridge, and is comprised of two larger, rapidly growing communities. To support growth in the area, and to connect these communities to Maple Ridge and each other, a series of amenity options were explored through a stakeholder workshop. The range of options included trail development, spray parks, community halls and park development. Key feedback from the workshop included the following:

- The two primary communities (Forest and Blaney) are unique, and separated by a small valley. While connected by a trail, it would not be feasible to expect an amenity located in one community to serve both.
- The community wants to avoid a destination amenity (like a spray park or large playground) that would attract outside users to their neighbourhood and create increased demand on an already congested road system.
- Community members expressed a strong desire for a place to gather that was connected to an outdoor space, and could serve as a community hub.

The workshop and discussions with staff resulted in a concept for two outdoor pavilions (one in each community), that would become a social heart for the community and would encourage BBQ's, community gardening, outdoor performances and gatherings. Each pavilion would be designed so that a multi-purpose community hall could be added at a later date.

SILVER VALLEY NEIGHBOURHOODS



GATHERING PLACES SITE PLAN

