

# SYNTHETIC SPORT FIELD & COVERED STADIUM

Visit [mapleridge.ca/1676](https://mapleridge.ca/1676) for more information.

Email us at [facilitytalk@mapleridge.ca](mailto:facilitytalk@mapleridge.ca) with your questions.

2A | Albion Sport Field Conversion

2B | Maple Ridge Secondary Track Facility Upgrade

2C | 5000 Capacity Stadium

## OVERVIEW

The original program brief for this project called for a 5,000 seat spectator facility at the Albion Sports Complex site. A closer review of the Albion site identified that space for parking was a significant issue for any future development. Discussions with stakeholders also identified other, more immediate needs related to existing facilities at Albion and Maple Ridge Secondary School [MRSS.] Additionally, organizers involved with large events currently hosted at the Albion Fairgrounds did not see a covered, 5,000 seat venue as supporting these events.

In response to this feedback and site constraints, this project has been presented as 3 different options. Option 2a provides seating, synthetic surface, field house and lighting upgrades to the Albion site that will allow for expanded use of the site by sports groups, and will increase the ability of the site to host tournaments. Option 2b provides lighting, seating, washroom and field upgrades at the MRSS site and an improved "throws" area to accommodate discus and hammer throw. These upgrades will allow athletics organizations to host larger scale meets and to train year round at this site. Option 2c describes the requirements for a 5,000 seat stadium, and assumes this would be located at a different site.



**HAVE OPINIONS?  
JOIN THE CONVERSATION.**

Use or download a QR Code app on your mobile device and scan this square.



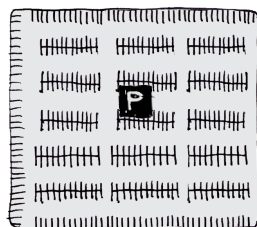
# 2

# ALBION SPORT FIELD CONVERSION PLAN

Upgrades include new change, washroom and officials building, 2 x 200 covered seating, one synthetic soccer pitch and additional lighting.

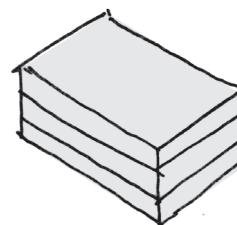


Additional parking is needed to support the spectator capacity. Similarly the loss of overflow parking for events through the upgrade of the soccer pitch to synthetic surface will need to be considered.



**Surface Parking**  
 +/- 500 stalls (17,500sm/187,500sf)  
 for spectator seating (100 stalls) and  
 replacement parking from conversion of  
 soccer fields to synthetic surface (+/-400  
 stalls)

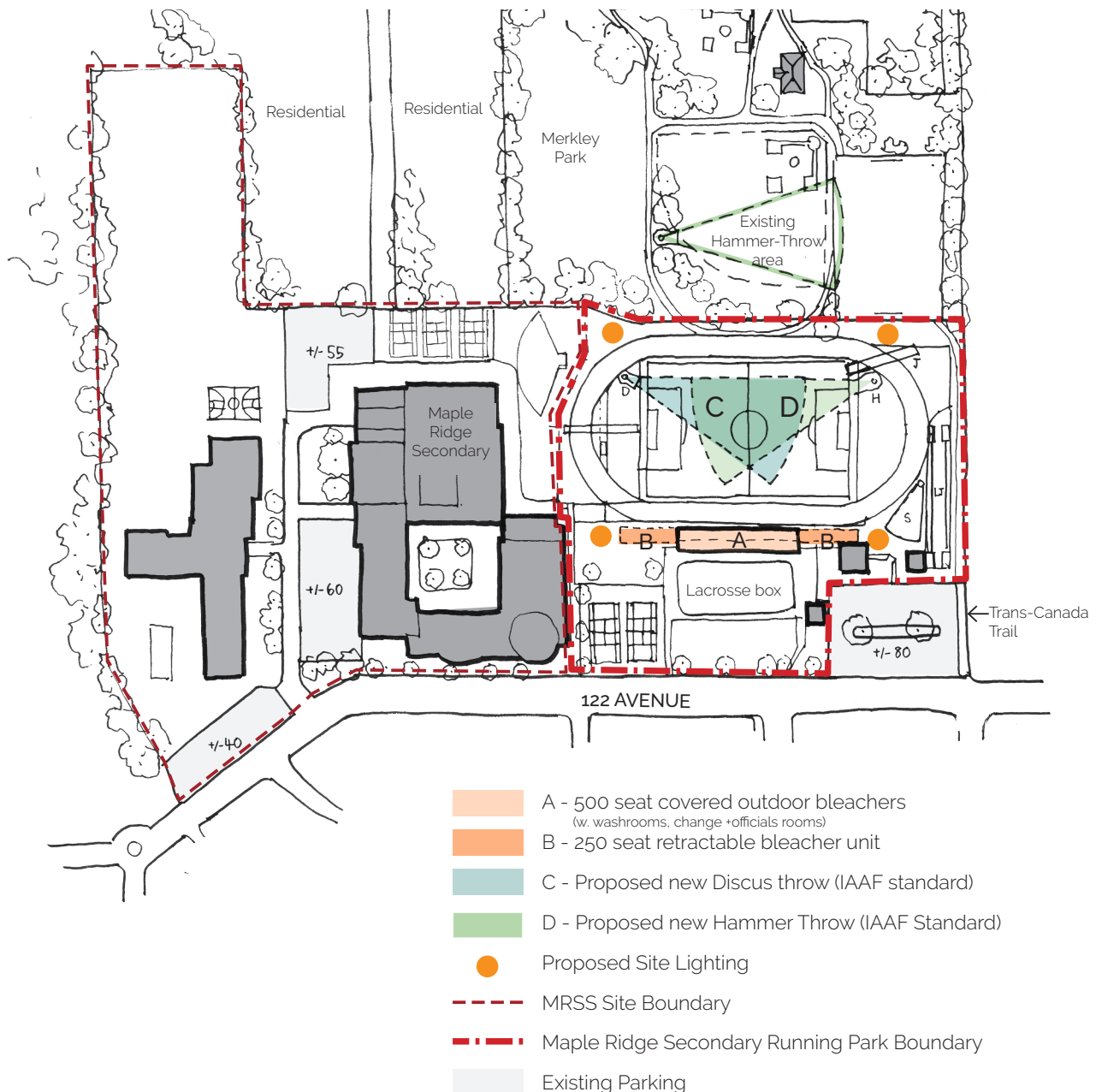
or



**Above grade  
structured parking**

# MAPLE RIDGE SECONDARY TRACK FACILITY UPGRADE PLANS

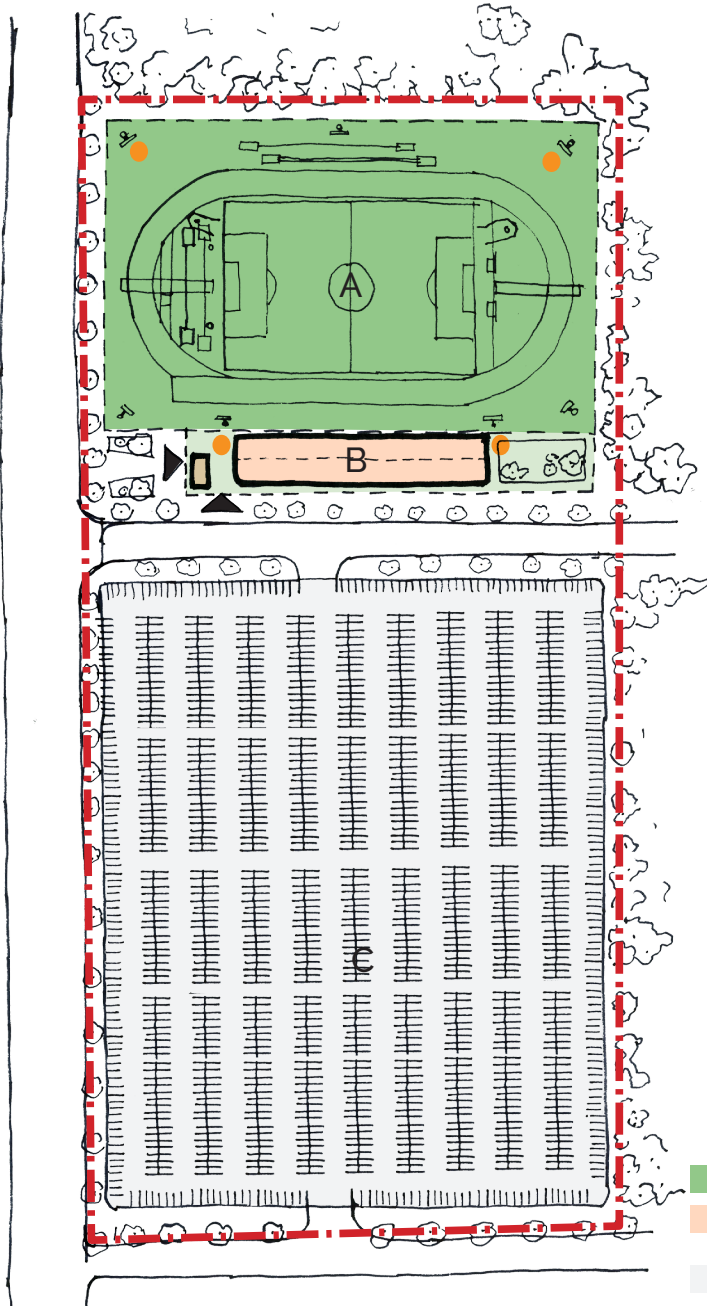
Upgrades include new change, washroom and officials building, 500 covered bleacher seating, 2 x 250 temporary bleacher seating, new discus and hammer throw areas and site, track & field lighting.





# 5000 CAPACITY STADIUM PLANS

New 5000 capacity stadium with IAAF competition and training standard track, jumping, throw areas and multi-use sport field for soccer and football. Facilities would also include changing, washroom, officials, administration offices, ticketing and concessions building, as well as surface parking.



- A - Sports Field Area
- B - Stadium w. fixed, covered seating  
(w. washrooms, change + officials rooms, offices  
+ concession beneath)
- C - Required Parking Area
- Site Landscaping
- Proposed Site Lighting



Above: Precedent images of IAAF standard Athletic and Sports Field Facilities & Stadium