

*Winter 2012*

# Heritage Here

Maple Ridge Community  
Heritage Commission Newsletter



## IN THIS ISSUE

The Commission .....1

In Appreciation...2

On Going Projects .....2

Future Events ....2

BC Heritage Conference 2011...3

The Sparling Residence...5

CHC Networking Conference 2011...6

Heritage Resources ...7



## Community Heritage Commission

Michael Cook – Member At Large

Faye Isaac – Historical Society

Michael Morden – Council Liaison

Jacqueline Mulcahy – Acting Chair

Brenda Smith – Historical Society

Lisa Zosiak – Staff Liaison

Tracey Camire – Committee Clerk

### Newsletter Subcommittee

Jacqueline Mulcahy

Lisa Zosiak

### Photo Credits

Maple Ridge Museum and Archives  
Heritage BC

The Land Conservancy  
Donald Luxton and Associates Ltd

### Published Quarterly By

Maple Ridge Community Heritage Commission  
11995 Haney Place,  
Maple Ridge, B.C. Canada V2X 6A9

Tel 604-467- 7341

Fax: 604-467-7329

<http://www.mapleridge.ca>

### Mandate of the Heritage Commission

The Community Heritage Commission (CHC) advises Municipal Council on matters relating to heritage conservation

### Heritage Funding

Financial support provided by the municipality as well as provincial and federal programs

### Community Awareness

Heritage Plaques, Heritage Awards, Adaptive Re-Use of Heritage Buildings; Partnerships with individuals and community groups interested in community heritage

### Community Heritage Context Planning

Identify the community's heritage values and establish a values-based foundation for building on a heritage planning and management program

### Heritage Strategic Plan

Utilizing the Heritage Context Study and building on existing foundation of heritage conservation, the Heritage Strategic Plan will guide the work of the Community Heritage Commission for the next 5 to 10 years

### Community Heritage Register Program

Guided by BC Register of Historic Places, and Standards and Guidelines for the Conservation of Historic Places in Canada

## Appreciation...

Recently, **Lynne Probyn, Chair of the Maple Ridge Heritage Commission** announced she was moving to New Westminster and therefore, resigning from her position. Sad news for the Commission and for our community, for Lynne has been a tireless advocate of heritage conservation.

Having moved to Maple Ridge in 2005, Lynne demonstrated her commitment to citizenship by joining the Santa Claus Parade Board as secretary. She also volunteered at the Maple Ridge Museum, using her skills as an office administrator, researcher, and educator to assist in conservation and public history programs.

In 2006, Lynne joined the Maple Ridge Historical Society, acting as secretary to the Board. A year later, she was nominated as the Society's liaison to the Maple Ridge Heritage Commission. In 2010, she was elected Chair.

As a member of the Commission, Lynne has been instrumental in developing the Heritage Plaque Program, and providing research and management of the Annual Heritage Awards. Always ready to work in any capacity, Lynne has been a stalwart member of the commission.

While we wish Lynne all the best in her new hometown, she will be greatly missed.

Similarly, we are sad to announce the departure of **Jeremy Laity, Youth Representative**. Jeremy joined the Commission last year and demonstrated his commitment to heritage conservation and research by maintaining the Maple Ridge Community Heritage Commission's Face Book Page.

Jeremy's participation at regular monthly meetings will be greatly missed. We wish him well, but know he has a wonderful future ahead.

## Ongoing Projects

### *Community Heritage Register*

Members continue to source sites that are deemed significant to the community. The registry verifies origins, as well as provides written and visual description to support a Statement of Significance.

### *Heritage Plaque Program*

We were recently made aware that the condition of some plaques was suffering due to design flaws. We hope to address this issue very soon.

## Future Events

### *Cemetery Tour*

Community Member At Large, Michael Cook is heading this subcommittee. Members are investigating how other communities undertake this opportunity to share the historical landscape. It is our hope that this project will be delivered in 2012.

### *North Vancouver/Abbotsford Museum Field Trip*

The Commission is planning a field trip in 2012 to explore how museums in other communities address their heritage artifacts and archival needs.

## Heritage BC – Annual Conference

### September 30 2011 – October 1 2011

Maple Ridge Heritage Commission members, Jacqueline Mulcahy, Brenda Smith, and Michael Cook as well as Planning Liaison Representative, Lisa Zosiak attended the annual Heritage BC conference held at the Shadbolt Centre for the Arts in Burnaby.

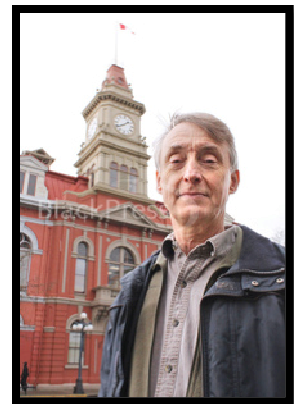
This year's theme, "**Forging Our Future,**" provided a descriptive of heritage challenges as well as a call to action. As **Rick Goodacre, Executive Director of Heritage BC** outlined in his opening remarks, since the adoption of the Heritage Conservation Act (1977), policy and funding of heritage has undergone massive change. In 2010, in response to the funding crisis, Heritage BC issued a "Call to Renew." The five- point proposal called for a provincial heritage strategy, the heritage branch, strengthening local support for heritage, consideration of the competition between heritage properties and the heritage branch, and finally, enhancement of operational and project funding.

Illustrating the challenges facing local communities, presenters from around the province demonstrated that adaptive approaches do render some success. For example, **Mike Dragani of the Revelstoke Community Heritage Commission** observed that the decision by the province to sell the local courthouse to the city resulted in ownership of an historic landmark without adequate funding for a copper roof. While rental space provided some revenue, there were insufficient funds to take on the project. Ultimately, funding was realized through the Columbian Basin Trust, a foundation established under the Columbian Basin River Treaty. While funding is often seen as the primary challenge, Dragani also pointed out that the value of preserving the original integrity of a building is sometimes not understood.

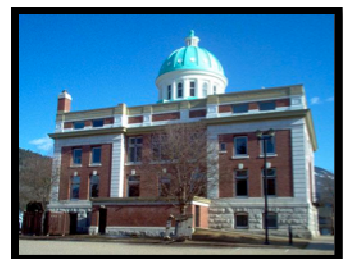
## Heritage BC Quarterly



**Rick Goodacre**



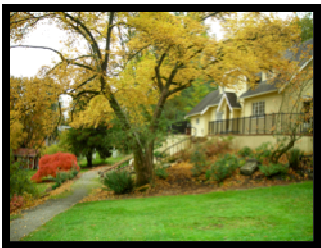
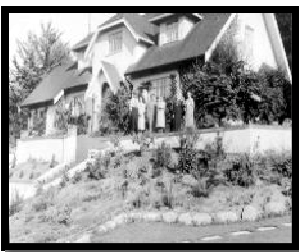
**Revelstoke Courthouse**



2011  
Conference Theme



Eagles Estate, Burnaby, B.C.



## Solutions, Leadership, & Strategies...

Lead by past executive director, Larry Foster as well as Rick Goodacre, two afternoon sessions examined the financial sources and program tools currently available to Heritage BC, Community Heritage Commissions, and Heritage Planners.

Three primary challenges were outlined:

- Allocation for heritage funding relies on the public's belief that heritage is relevant. Without public interest, heritage conservation will be undermined.
- The Heritage Legacy Fund, which provides grants to BC communities, will be eroded if adequate funding to Heritage BC is not provided.
- Heritage BC can effectively respond to current circumstances if a new strategy is developed.

At the local level, leadership can be shown by:

- Requesting municipal councils endorse Heritage BC 2009 strategy and the "Call to Renewal."
- Providing information of cost/benefits to homeowners, planners, and developers.
- Developing partnerships in support of heritage through skills development, marketing, and strategic cost sharing programs.

## A Significant Announcement...

Before ending the day, the Honourable Steve Thomson announced that a \$35,000 contribution was being made to Heritage BC to develop a new strategic plan.

While participants applauded this as a much needed respite, many stakeholders commented that Heritage BC and the Heritage Legacy Fund will continue to suffer unless full funding is restored.

## Grateful for what we have accomplished...

Despite concerns, our optimism for the future extended to Saturday when participants enjoyed a **Tour and Tea of the Eagles Estate Heritage Gardens**. Knowing the challenges facing heritage, the effort of past projects inspires and strengthens dedication.



## Statement of Significance: Sparling Residence

### Report on Draft, November 2011

Don Luxton of **Donald Luxton and Associates** presented a draft statement of significance to the CHC on November 28, 2011. The Sparling Residence, located at 11350 Anderson Place, has often been admired for its vernacular Arts and Craft architecture. Verifiable research and documentation of its significance will allow the property to be included on **Maple Ridge's Heritage Inventory**.

According to Mr. Luxton, the Sparling home is a valuable record of the urban and social development in the Ridge neighbourhood. Originally part of **John McIver's** 1859 pre-emption, William J. Sparling purchased the 6-acre parcel in 1918, and in 1928 commissioned construction of the home.

While land transfer records associated with the property demonstrate the evolution of a rural community and Maple Ridge's economic recovery following **World War I**, the building also provides insight into the cultural and social values of its owners and their neighbours.

Mr. Luxton observed that the typical A & C residence of the period expresses a commitment to rationalism defined by symmetry of windows, doors, as well as porch locations. Although the Sparling home mirrors a late example of the vernacular, its wrap around porch, inconsistent adjacencies, window styles, and river focal point replicate elements of a farmhouse.

Subsequent owners have largely maintained the unique characteristics of the home and as a result, strengthened its current heritage value. The **final draft** will be submitted in the early part of 2012, and we believe it will contribute greatly to our understanding of Maple Ridge's development.



## **CHC Annual Networking Conference 2011**

### **Surrey, BC**

There are many challenges facing community heritage commissions today. Primarily, representatives want to educate and advocate on all matters relating to heritage conservation and preservation. To do so effectively is always a concern. To address this, the first annual Community Heritage Commission networking conference was hosted in Mission, BC in 2009. The following year, Maple Ridge organized the event.

This year's conference was hosted by Surrey's commission and reports provided by Brenda Smith and Michael Cook offer invaluable insight and potential for community heritage commissions throughout the province.

Program highlights included:

- Don Luxton. "Energy in BC – a Power Past, a Sustainable Future." Emphasis on holistic sustainability; inclusion of human capital.
- Central BC Railway/Forestry Industry Museum, Prince George CHC. "Cultural Tourism and P3 Projects"
- Rick Hart, Surrey Heritage Advisory Commission. "Review and Revision of Heritage Initiatives Programs."
- Karen Hovestad, Nanaimo CHC. Program and grant review.
- Rick Goodacre, Heritage BC. "The Job of CHCs."
- Ursula Plahler, BC Heritage Branch. "Marketing & Heritage Tourism."
- Julie Schuek, City of New Westminster. "Management of Registered Heritage properties, and Heritage Registry."

Next year's conference will be hosted by the Nanaimo Community Heritage Commission.

Overall, commission members reported that the event was helpful and encouraging. It is hoped that we can further develop not only our knowledge but help formulate a strong framework for heritage planning in Maple Ridge.

### Why Heritage Resources?

Are you curious about the role of heritage commissions in British Columbia and Canada?  
Do you wonder what standards are applied to heritage sites?  
Do you want to understand how heritage conservation applies to your own home?

### Begin by Exploring Local Heritage Resources

Maple Ridge Community Heritage Commission:

<http://www.mapleridge.ca/EN/main/municipal/728/chc.html>

Maple Ridge Museum and Archives:

<http://www.mapleridgemuseum.org>

Maple Ridge Historical Society

[http://www.mapleridgemuseum.org/05\\_historical\\_society.html](http://www.mapleridgemuseum.org/05_historical_society.html)

### Go Beyond the Local

BC Heritage Branch

<http://www.jti.gov.bc.ca/heritage/>

The Land Conservancy

<http://blog.conservancy.bc.ca/>

Heritage Legacy Fund

<http://www.heritagelegacyfund.ca/>

BC Historical Foundation

<http://www.bchistory.ca/>

### Heritage Planning: Why the Local Matters

BC Ministry of Community, Sport, and Cultural Development

[http://www.cscd.gov.bc.ca/lgd/planning/community\\_planning.htm](http://www.cscd.gov.bc.ca/lgd/planning/community_planning.htm)

Canadian Tourism Commission

<http://en-corporate.canada.travel/>

### Become an Expert

Vancouver Heritage Foundation Old School

<http://www.vancouverheritagefoundation.org/oldschool.html>

University of Victoria Cultural Resources Management Program

<http://www.uvcs.uvic.ca/cultural/>