

**Proposed River Road and Carshill
storm main and road works
Local Area Service project
Meeting**

Andrew Wood

July 26, 2007

Agenda

- Purpose of meeting
- Background
 - Capital Works program and history
 - Proposed Local Area Service project
- Next steps
- Questions

Background

Escarpment subject to historic landslides

BC Ministry of Environment Studies in 1979, 1983 and 1986

- Based on science of the day and data
- Monitoring
- Policies established

Maple Ridge Study by Golder Associates (2002-2004)

Policies updated

Background

District of Maple Ridge's Capital Works program

Projects are scheduled within 2 time periods

- a) Short term (within 5 years)
- b) beyond 5 years

Funded by various sources, e.g. General Revenue, Development Cost Charges, Monies in Trust, Utility customers, Local Area Services (LAS).

Projects of large scope (and costs) typically phased; e.g. 232 street bridge, Dewdney Trunk road, Culvert repairs, River road).



River Road Capital Works

Basis for capital works program - phased construction

1997 - Road reconstruction project on River road between 207 Street and Laity Street to install curb, road drainage and sidewalks.

2000 – Road and drainage improvements on River road between Laity and 216 Street designed and tendered. Tenders exceeded budget and the tender was “collapsed”.

2000 - 2001 – Project contemplated for 2000 was re-scoped to between Laity and Darby (instead of 216 Street). Storm sewer constructed as Phase 2. Road works constructed as Phase 3.

River Road Capital Works

2002 – 2004 – Golder Associates review

2006 - Drainage pre-design identified

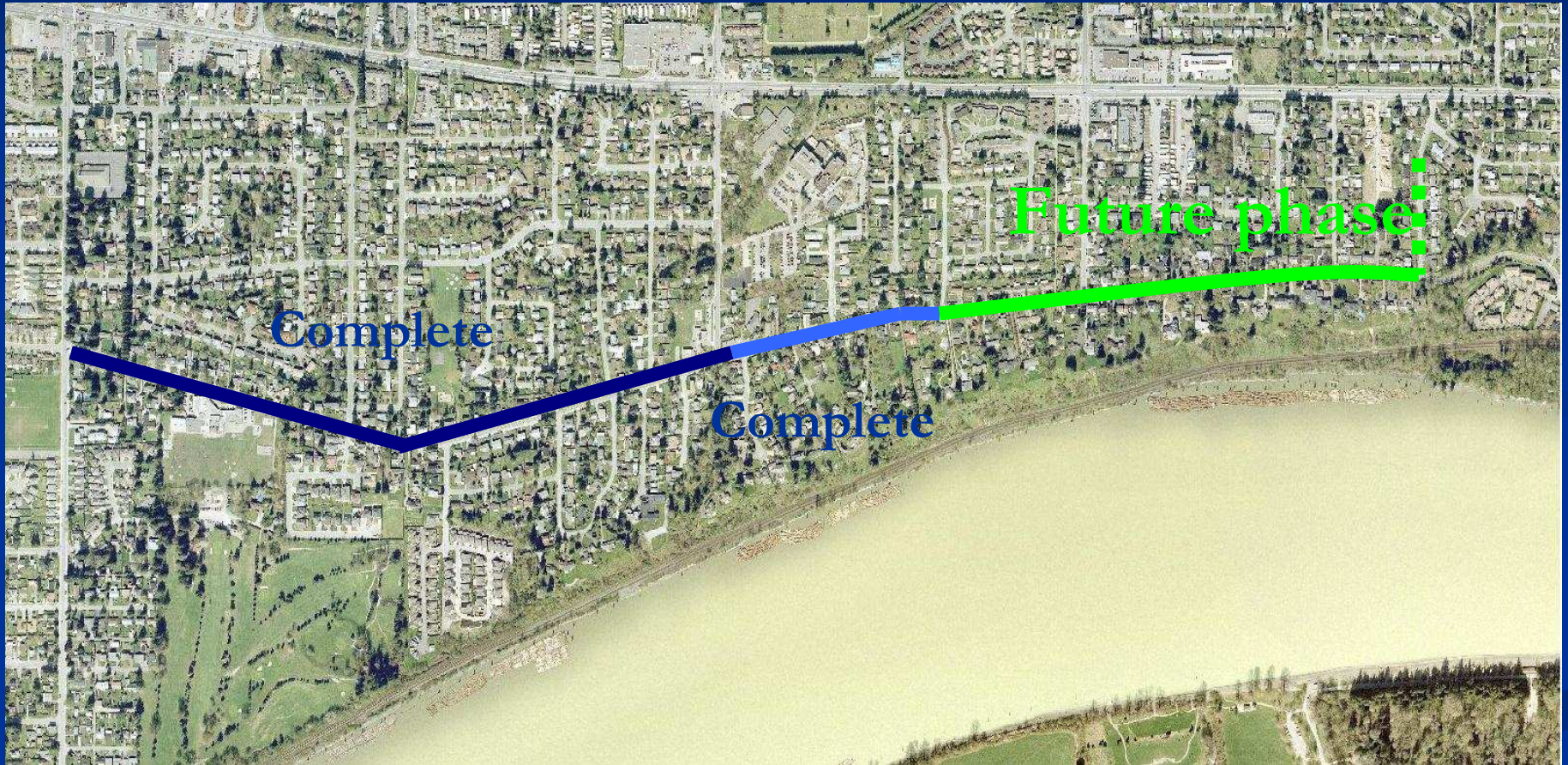
2007 – Geotechnical investigation (CPT) of Escarpment

2010 (scheduled) – Next phase of River road improvements
(Darby to Carshill)

- Water main \$0.3M
- Storm main \$1.6M

2012 (scheduled) – Road improvements River road (Darby
to Carshill)

Phasing plan (2006)



Accelerating the construction

Council submitted a grant application for \$5.6 M for drainage and road improvements to advance the construction.

Application based on 2/3 contribution from Federal and Provincial governments and LAS for municipal portion.

Staff commenced the detailed design process for both drainage and road improvements



Accelerating the construction

Council received a petition on June 18, 2007

- 75 percent of Local Area Service area residents
- requests the District to allocate municipal funds to implement the construction of storm sewer, drainage and road improvements

A formal negative response was received from Province was received on the status of the grant application.

Reviewing the construction program

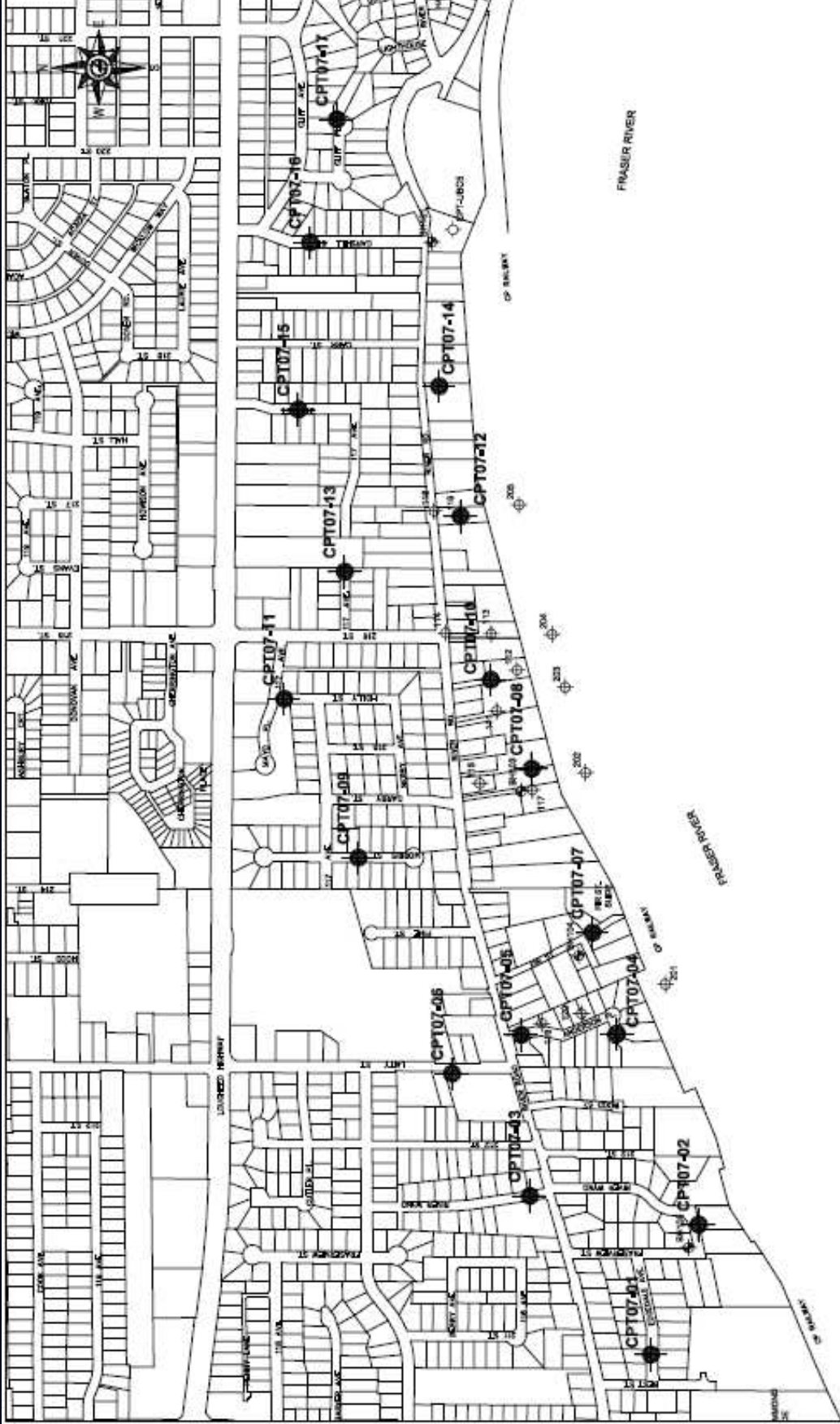
Council passed the following resolutions:

- *That upon receipt of a formal response from the Provincial Government in regard to a infrastructure grant request for River Road, staff is to hold a public information meeting for residents; and*
- *That the local improvement process previously directed by Council not be pursued; and*
- *That the results of the Golder Associates study currently underway be used as input to address future priorities for the area; and*
- *That the recommendations from the Golder Associates study be brought forward as part of the 2008 business planning process; and further*
- *That this information be released to the public in the correspondence informing the residents of the proposed meeting.*

Next steps

Geotechnical investigation work is underway





LEGEND:

-  CPT07-xx
Cone Penetration Test by Golder (2007)
-  BHxxx
Boring by Golder (1976)
-  xxx
Stantipe Piezometer Installations by Golder (1982)
-  CPT-UJCS
Cone Penetration Test by University of British Columbia (1984)



Next steps

- CPT work scheduled to be complete fall 2007
- Confirm soil characteristics in more detail
- Public Open House to report results
- Potential future work and assessments
- Capital program update and prioritization
- Continued discussions with CP Rail

http://www.mapleridge.ca/EN/main/municipal/893/neighbourhood_improvements.html#Fraser_River_Escarpment_-_Core_Penetration_Testing_Field_Work

Questions?