



Upcoming Construction

We're working in your neighbourhood to improve clean, fresh water delivery

Construction along Abernethy Way and 128 Avenue

The Ridge Water Utility Projects

November 1, 2011

This notice contains important information that may affect you. Please ask someone to translate it for you.

Ce document contient des renseignements importants qui pourraient vous concerner. Veuillez demander à quelqu'un de vous le traduire.

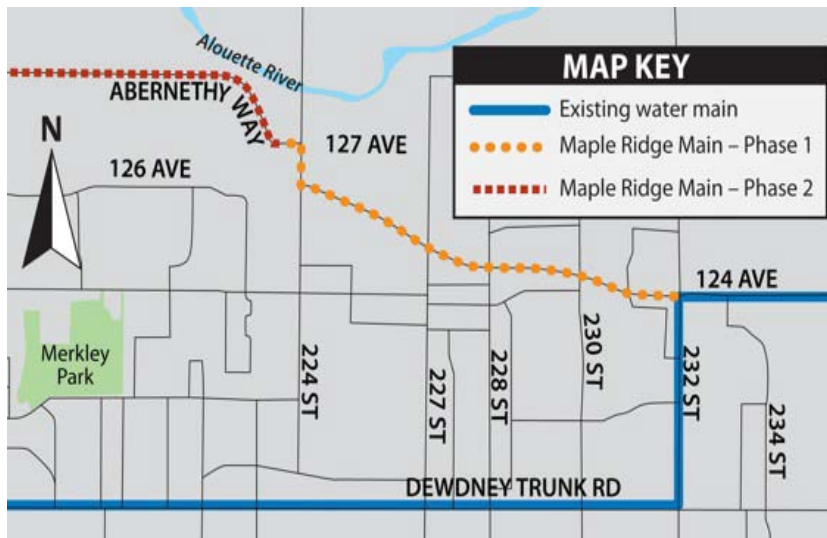
此通告刊載有可能影響閣下的重要資料。請找人為你翻譯。

ਇਸ ਨੋਟਿਸ ਵਿਚ ਮਹੱਤਵਪੂਰਨ ਜਾਣਕਾਰੀ ਹੈ ਜੋ ਕਿ ਤੁਹਾਡੇ ਲਈ ਜ਼ਰੂਰੀ ਹੋ ਸਕਦੀ ਹੈ। ਕਿਰਪਾ ਕਰਕੇ ਕਿਸੇ ਨੂੰ ਇਸ ਦਾ ਉਲੱਥਾ ਕਰਨ ਲਈ ਆਖੋ।

Thông báo này có tin tức quan trọng có thể ảnh hưởng đến quý vị. Xin nhờ người phiên dịch hộ.

Este aviso contiene información importante que puede afectarle personalmente. Pídale a alguien que se lo traduzca.

Metro Vancouver, working in cooperation with the District of Maple Ridge, is undertaking a major water utility infrastructure project, called The Ridge Water Utility Projects. These projects consist of a pump station near Lougheed Highway with associated pipe installation nearby, and a new water main that extends the existing water distribution system along 128 Avenue/Abernethy Way. When complete, these projects will help meet the growing water demands for Maple Ridge, Surrey and Langley.



Maple Ridge Main – Phase 1 alignment

Construction activities

Starting in mid-November 2011, a Metro Vancouver contractor will be installing a new water main on Abernethy Way between 232 Street and 224 Street (see map for location details).

Water main installation is expected to take approximately two-to-three weeks per 300 metre section; however, more time will be required in certain areas due to complex intersection crossings. As installation progresses, the affected areas will be backfilled and temporarily restored. Final restoration for this first phase is scheduled for spring 2012.

Once the water mains have been installed, crews will return to certain locations to connect the new pipes into Metro Vancouver's existing water distribution system.

Preliminary schedule*

Water mains	Active construction	Connections & restoration
Phase 1: Abernethy Way (232 St. – 224 St.)	Mid-Nov. 2011 – March 2012	Restoration: spring 2012 Connections: 2013 – 2014
Phase 2: 128 Avenue (210 St. – 224 St.)	2013 – 2014	2013 – 2014
Pump station construction	Spring 2012 – fall 2013	Late 2012 – late 2013

*Please note that the construction schedule is subject to change.

Hours of work

- Construction work will generally occur between 7 a.m. and 6 p.m. from Monday to Friday.
- There may be occasions when the contractor needs to work later, or on a Saturday, to complete a specific task and maintain the construction schedule.
- Work will comply with municipal noise bylaws, and granted bylaw variances.

Noise and dust

There will be construction noise associated with this project, due to machinery and large trucks working next to the roadway. All work will comply with municipal noise bylaws, and granted bylaw variances. Noise mitigation measures will be put in place whenever possible.

There will be dust associated with this project. Metro Vancouver's contractor will conduct street watering as required to reduce dust and dirt on local roads. Trucks hauling materials to and from the construction site will be covered.

Safety and security

During construction heavy equipment such as excavators and trucks delivering pipe and removing excavated material will be on site. Trucks will travel on designated truck routes and will use mandatory safety precautions such as back-up beepers. The construction site will be fenced off after-hours for safety purposes. Metro Vancouver will work with the contractor to ensure safe pedestrian, and, where required, equestrian, crossings around active construction zones. Please use caution when in the area.

Traffic and parking

During construction, access for local traffic will be maintained with major street crossings remaining open. Residents are asked to use designated detour routes when required, which will be clearly marked by signage. Flag personnel will be on site to direct vehicle and pedestrian traffic. Please allow for extra travel time or plan an alternate route to avoid delays.

Thank you for your patience and understanding during construction of the Ridge Water Utility Projects.



Did you know?

There are over 500 kilometres of Metro Vancouver water mains. That's about the driving distance from Vancouver, British Columbia to Portland, Oregon!



metro
vancouver

CONTACT US

Community Liaison Officer: 604-436-6986
(Monday to Friday from 8 a.m. to 4:30 p.m.)

Metro Vancouver Information Centre: 604-432-6200
(Monday to Friday from 8 a.m. to 4:30 p.m.)

After-Hours Emergency: 604-451-6610

Email: icentre@metrovancouver.org
(Please include "Ridge Utility Projects" in the subject line)

Fax: 604-432-6297

WEB UPDATES

For additional information on this project, or to sign up for project updates, please visit www.metrovancouver.org and search: "The Ridge Water Utility Projects."

To provide written comments, please send mail to:

Public Involvement Division,
Engineering & Construction Department,
Metro Vancouver, 4330 Kingsway, Burnaby, BC
V5H 4G8

Visit the project web page by scanning
this QR code with your mobile device.
(Requires a QR code scanning application)

