



Upcoming Survey Work

We're working in your neighbourhood to improve clean, fresh water delivery

Archaeological Digs along 203 Street, between 126 Avenue and 124B Avenue

The Ridge Water Utility Projects

November 18, 2011

This notice contains important information that may affect you. Please ask someone to translate it for you.

Ce document contient des renseignements importants qui pourraient vous concerner. Veuillez demander à quelqu'un de vous le traduire.

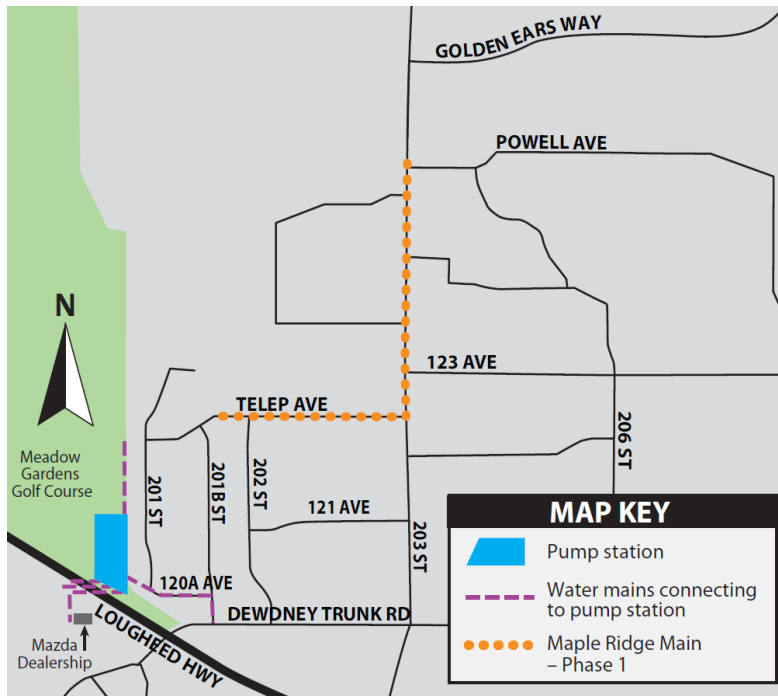
此通告刊載有可能影響閣下的重要資料。請找人為你翻譯。

ਇਸ ਨੋਟਿਸ ਵਿਚ ਮਹੱਤਵਪੂਰਨ ਜਾਣਕਾਰੀ ਹੈ ਜੋ ਕਿ ਤੁਹਾਡੇ ਲਈ ਜ਼ਰੂਰੀ ਹੋ ਸਕਦੀ ਹੈ। ਕਿਰਪਾ ਕਰਕੇ ਕਿਸੇ ਨੂੰ ਇਸ ਦਾ ਉਲੱਥਾ ਕਰਨ ਲਈ ਆਖੋ।

Thông báo này có tin tức quan trọng có thể ảnh hưởng đến quý vị. Xin nhờ người phiên dịch hộ.

Este aviso contiene información importante que puede afectarle personalmente. Pídale a alguien que se lo traduzca.

Metro Vancouver, working in cooperation with the District of Maple Ridge and the City of Pitt Meadows, is undertaking a major water utility infrastructure project, called The Ridge Water Utility Projects. These projects consist of a new water main along Telep Avenue and 203rd Street, a pump station and a series of water mains that will connect the new pump station to the existing water distribution system. When complete, these projects will help meet the growing water demands for Maple Ridge, Surrey and Langley.



Ridge Water Utility Projects

Archaeological digs

During the week of November 21, Metro Vancouver's contractor, Matcon, will mobilize on 203rd Street, between 126 Avenue and 124B Avenue to conduct archaeological test digs. These digs are required by the Province of BC Archaeological Branch, as part of the Archaeological Impact Assessment. These digs will take place on the west side of 203rd Street in the gravel shoulder or along the edge of the road. This work will involve digging holes approximately two to three metres deep, two metres wide and three to four metres long. The excavated material will be screened and raked, and sediment sampling will take place to look for any signs of archaeological materials. This work will require approximately five working days. An archaeologist and two representatives from First Nations groups will be present during this survey work.

Once the digs are complete, the shoulder and any disturbed road will be restored.

Continued on reverse ...

Hours of work

- Digs will generally occur between 7 a.m. and 6 p.m. from Monday to Friday.
- There may be occasions when the contractor needs to work later to complete a specific task and maintain the construction schedule.
- Work will comply with municipal noise bylaws, and granted bylaw variances.

Traffic

Due to the space needed to conduct these archaeological digs, a single-lane alternating traffic pattern may be required in certain locations. Flag personnel will be on site to direct vehicle and pedestrian traffic. Please allow for extra travel time or plan an alternate route to avoid delays.

Holiday working hours

With the holiday season upon us, Matcon's crews will be shutting down construction activities from December 24th, 2011 to January 2nd, 2012. During this time, all open excavations will be fenced off for safety purposes and current street closures will remain in place. Metro Vancouver offices will be closed on December 26, 27 and January 2. During this time, the after-hours emergency phone number, indicated below, will be active.

Metro Vancouver's role in water supply

Metro Vancouver provides a reliable source of safe, high-quality drinking water to its member municipalities at a reasonable cost. This includes acquiring and maintaining supply, as well as treating, testing and delivering water to the municipalities. In turn, the municipalities are responsible for conveying water to residents and businesses.

Metro Vancouver uses a system of watersheds, dams, reservoirs, pump stations and water mains. To maintain the quality and reliability of these systems and of the supply, improvements are constantly underway.

Thank you for your patience and understanding during construction of the Ridge Water Utility Projects.



metro
vancouver

Hand Delivery: 5613814

CONTACT US

Community Liaison Officer: 604-436-6986
(Monday to Friday from 8 a.m. to 4:30 p.m.)

Metro Vancouver Information Centre: 604-432-6200
(Monday to Friday from 8 a.m. to 4:30 p.m.)

After-Hours Emergency: 604-451-6610

Email: icentre@metrovancover.org
(Please include "Ridge Utility Projects" in the subject line)

Fax: 604-432-6297

**To provide written comments,
please send mail to:**

Public Involvement Division,
Engineering & Construction Department,
Metro Vancouver, 4330 Kingsway, Burnaby, BC
V5H 4G8

WEB UPDATES

For additional information on this project, or to sign up for project updates, please visit www.metrovancover.org and search: "The Ridge Water Utility Projects."

Visit the project web page by scanning this QR code with your mobile device.
(Requires a QR code scanning application)

