

# Sanitary Sewer Extension to Correctional Centres



## Welcome to our Open House

### Project Location

- Fern Crescent from 237 Street to 128 Avenue
- 128 Avenue from Fern Crescent to 256 Street
- Alouette Road from 128 Avenue to The Alouette Correctional Centre for Women (ACCW)
- 256 Street from 128 Avenue to Fraser Regional Correctional Centre (FRCC)

### Objectives

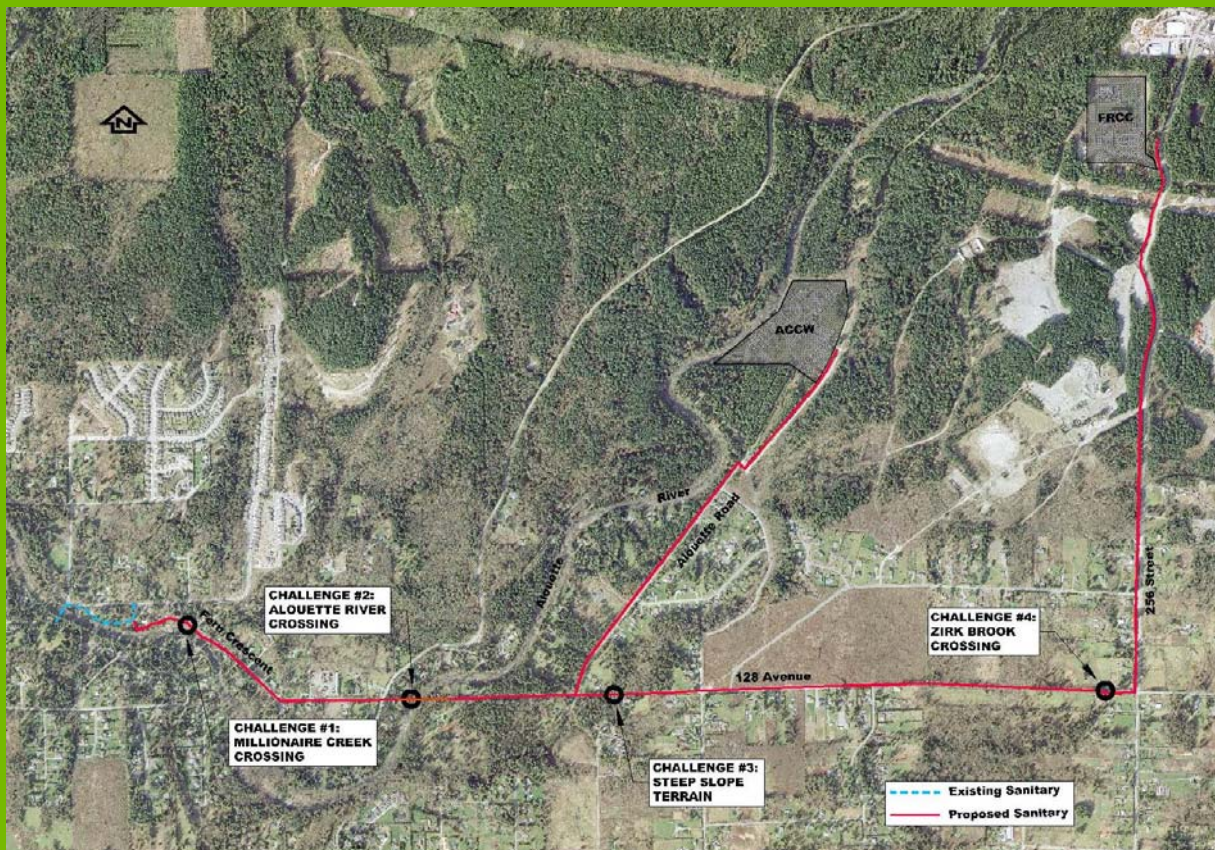
- To provide sanitary service to the Fraser Regional Correctional Centre
- To provide sanitary service to the Alouette Correctional Centre for Women



# Sanitary Sewer Extension to Correctional Centres



## Selected Route



- Utilizes existing municipal Right-Of-Way minimizing property impacts
- Provides gravity service to 256 Street servicing study area; does not require pumping

## Challenges

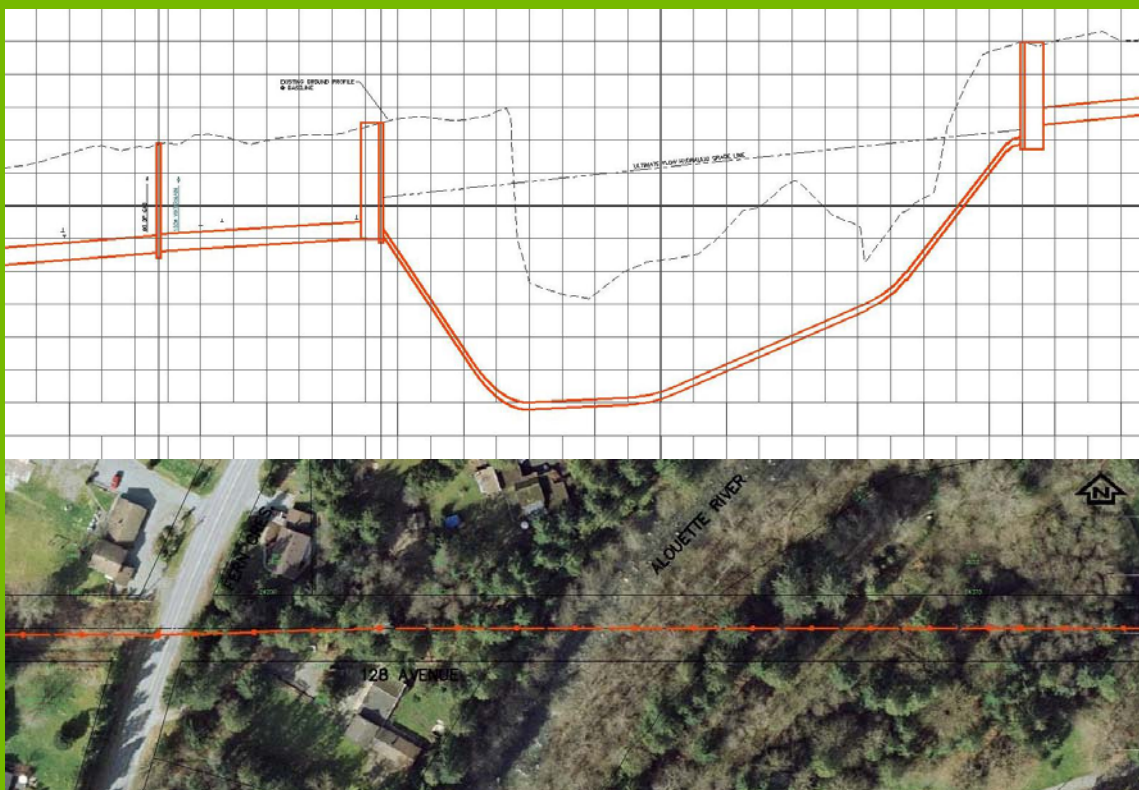
1. Aerial crossing of Millionaire Creek at 239 Street
2. Inverted Siphon crossing under the Alouette River east of Fern Crescent
3. Traverse of steep embankment east of Alouette Road, west of 248 Street
4. Aerial crossing of Zirk Brook west of 256 Street



# Sanitary Sewer Extension to Correctional Centres



## Alouette River Crossing



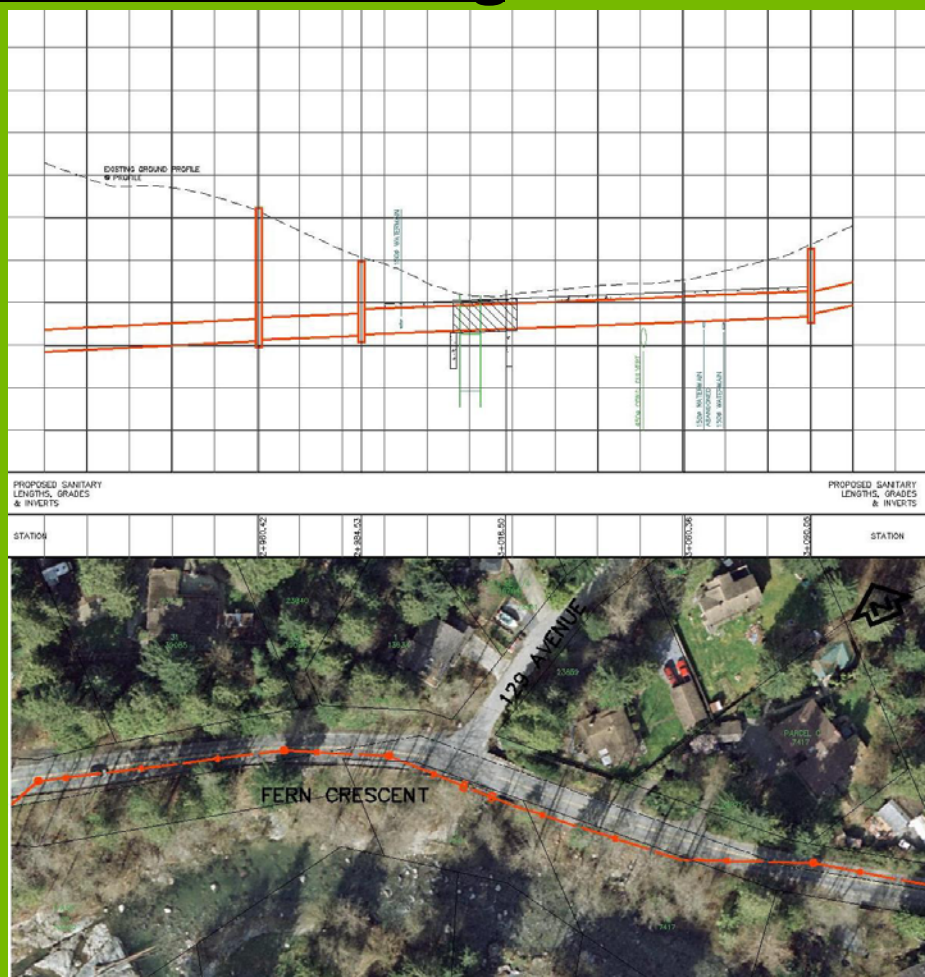
- River crossing location is an environmentally sensitive area through which the 'Maggie and Jiggs' equestrian trail currently runs
- Steep embankment on the western bank
- Crossing will be installed using 'Directional Drilling' methodology to minimize disturbance to river bed and surrounding area
- Crossing will function through siphon action, eliminating the need for a pumped system
- Crossing will be sized to function with today's sewage flows, as well as future sewage flows, so no future upgrade works should be required. Siphon will be a 3-pipe design



# Sanitary Sewer Extension to Correctional Centres



## Millionaire Creek Crossing



- Proposed sanitary main will cross over Millionaire Creek, beside the existing vehicle bridge
- Aerial crossing will minimize disruptions to environmentally sensitive area during construction
- Sanitary sewer main will be pressure rated ductile iron pipe at crossing
- Sanitary main will be installed inside a steel casing pipe



# Sanitary Sewer Extension to Correctional Centres



## Zirk Brook Crossing



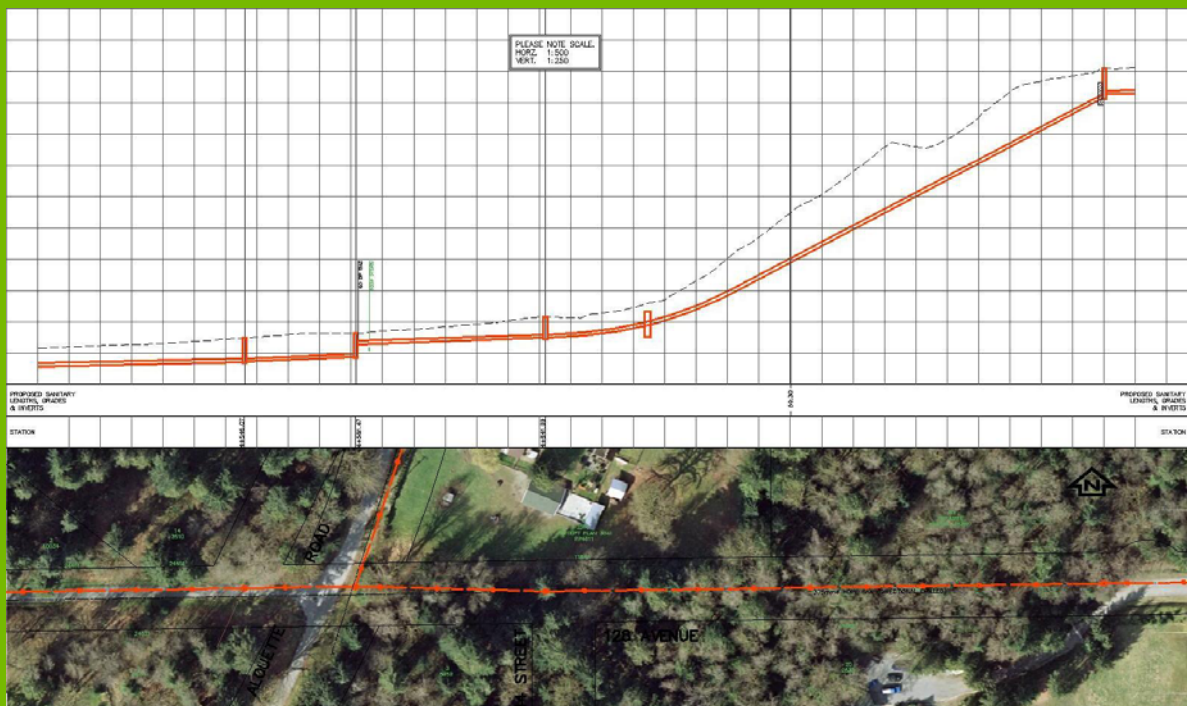
- Proposed sanitary main will cross over Zirk Brook, adjacent to the existing driveway bridge at the north side of the Road allowance
- The existing equestrian trail and bridges on the south side of the road allowance will remain intact and undisturbed



# Sanitary Sewer Extension to Correctional Centres



## Steep Embankment at Alouette Road



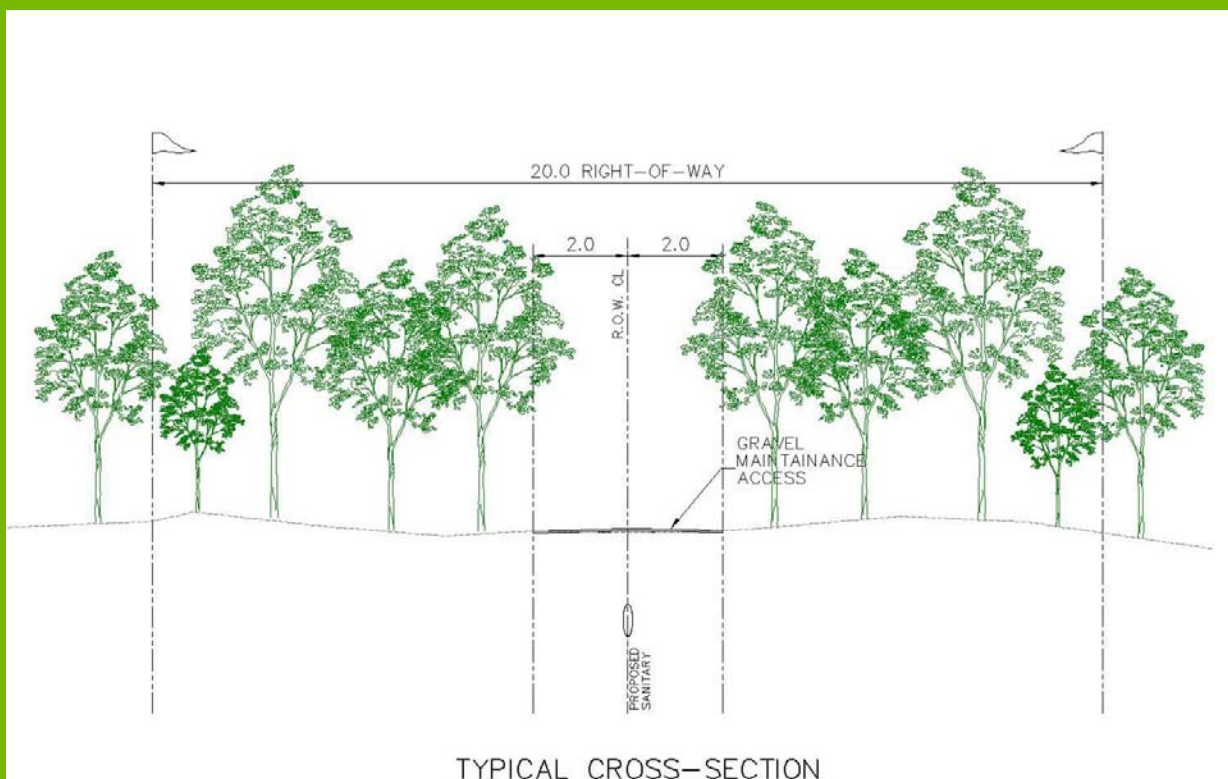
- There is a steep embankment along the 128 Avenue corridor immediately east of Alouette Road. Currently, 'killer hill' equestrian trail meanders up the embankment.
- To avoid disturbance to the equestrian trails and environmentally sensitive areas, it is proposed to install the sanitary sewer utilizing 'Directional Drilling' methodology.
- The existing equestrian trail up 'killer hill' will remain unaltered during and following construction of this section of sewer main



# Sanitary Sewer Extension to Correctional Centres



## Equestrian Trails



- During construction, equestrian trails will be impacted
- The District of Maple Ridge requires a maintenance access trail above the proposed sanitary main, which will replace the current equestrian trails in many locations
- The maintenance access will be 4.0m (13 feet) wide and will be finished with a gravel surface
- Access gates will be installed at the entrance to all maintenance access trails to prevent unauthorized vehicle access
- Where equestrian trails are located outside of the construction corridor, they will remain intact and unaltered



# Sanitary Sewer Extension to Correctional Centres



## Schedule

- Completion of detailed design March 2010
- Issued for Tender April 2010
- Start of Construction June 2010
- Completion of Construction before March 2011

## Please voice your opinion

Thank you for attending the District of Maple Ridge's Open House

