

RIDGE MEADOWS RCMP



2017 LOOKING BACK

OPENING COMMENTS

A message from our Chief
[Click here to read more](#)



MODERN CONNECTIONS

Getting with the times & telling
our story
[Click here to read more](#)



MEET THE TEAM

Where every individual is a leader
[Click here to read more](#)



GIVING BACK

Community events & fundraising
[Click here to read more](#)



BIG MOMENTS

Moments & events that tell
our story
[Click here to read more](#)



GOOD WORK

Police work which does not go
unnoticed
[Click here to read more](#)



ROAD SAFETY

In the job of saving lives
[Click here to read more](#)



BY THE NUMBERS

What went up, what went down
[Click here to read more](#)



KIDS ARE COOL

Future generations are powerful
[Click here to read more](#)



LOOKING AHEAD

One team, stronger together
[Click here to read more](#)



RCMP



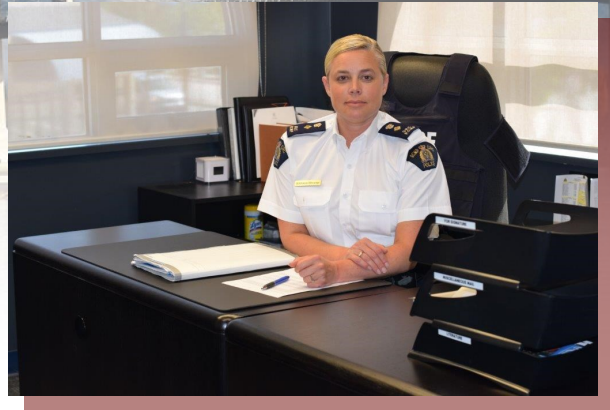
ROYAL CANADIAN MOUNTED POLICE

RIDGE MEADOWS RCMP - *ONE TEAM, STRONGER TOGETHER*

OPENING COMMENTS

Superintendent Jennifer Hyland

Welcome to our 2017 Year in Review. I am proud of our team of committed police officers, civilian staff, and volunteers and their efforts to keep our community safe. We all play a role in community safety and we are tremendously fortunate to have many passionate and caring community partners and active citizens. I hope you enjoy the new digital format of looking back. In 2017 we embraced new methods of connecting with our citizens in a more modern and relatable way via social media and our revised website. We also focused on connecting with youth and strengthening those relationships so that we are on the pulse of what is happening with the young people in our community. It has been many years since we had active police officers working directly with each and every school in Maple Ridge and Pitt Meadows and we are so happy to have brought that involvement back to the communities in 2017. We believe strongly that this is an important investment. Looking forward, we are excited about 2018 knowing that we are a stronger community when we work together.



SENIOR MANAGEMENT TEAM



Inspector Aaron Paradis Operations Officer

As the Operations Officer I have been engaged with everyone from both City halls to general citizens and I feel very welcomed in this community by all who I have encountered. I am very encouraged by the support we as a police agency receive and I look forward to further strengthening these relationships!



Staff Sergeant Roxanne Dowden Operations Support NCO

I am thrilled with the training, wellness and development we have achieved this past year. It is paramount we ensure our officers are trained in the most up to date tactics and provide the necessary equipment to do their job. Most importantly, we strive to promote wellness and support for our members and their families.



Staff Sergeant Kevin O'Donnell Plain Clothes Commander

As the Plain Clothes Commander I am excited to lead a dedicated group of police officers within a number of specialized units which include the General Investigation Section, the Street Enforcement Unit and the Uniform Community Response Unit. The support and cooperation from all citizens has been outstanding in making our communities an engaged and safe place to live.



Maureen Jones Senior Manager, Police Services

Police Services staff are proud to work alongside the RCMP to help deliver policing services to our citizens. We take great pride in the accomplishments made in 2017 by our detachment and continuously look for innovative, creative and efficient ways to deliver our services. Civilian staff care about our communities and are committed to making a difference every day.

RCMP

ROYAL CANADIAN MOUNTED POLICE

RIDGE MEADOWS RCMP - *ONE TEAM, STRONGER TOGETHER*

MEET THE TEAM

Where every individual is a leader

DID YOU KNOW?

We have a total of 101 officers assigned to Maple Ridge, 23 officers for Pitt Meadows, 3 inter-provincial officers and 45 FTE civilian support staff positions. Our team proudly serves the citizens of [Maple Ridge](#), [Pitt Meadows](#) & the [Katzie First Nation](#). We believe leadership is valued at all levels within our organization.



General Duty

General Duty (GD) police officers are typically the first responders when police are called. They serve our communities 24 hours a day, seven days a week.

Serious Crimes & General Investigations (GIS)

Members within the General Investigation Section conduct investigations involving serious criminal offences which occur in our communities. Support from our citizens during these investigations is paramount to a successful outcome and community safety.

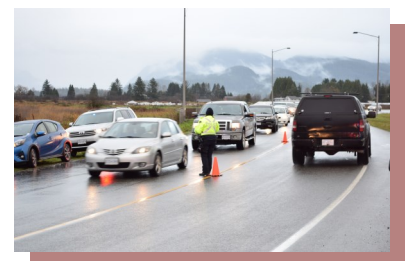


Street Enforcement (SEU)

The Street Enforcement Unit investigates property related and illegal drugs & substance act offences through a targeted team based approach. Targets are identified to decrease criminal activity on our streets.

Traffic Services

Ridge Meadows Traffic Services consists of two teams, providing 7 day per week coverage. They are responsible for the enforcement of all Provincial traffic offences as well as investigations associated to motor vehicles, serious crashes and vehicle related fatalities.



RCMP

ROYAL CANADIAN MOUNTED POLICE

RIDGE MEADOWS RCMP - *ONE TEAM, STRONGER TOGETHER*

MEET THE TEAM

Where every individual is a leader

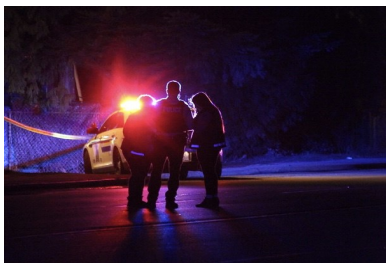
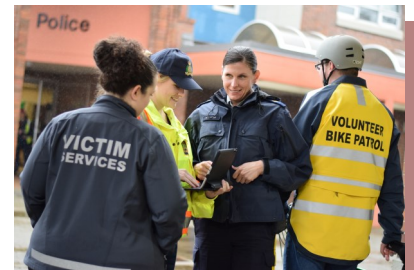


Uniformed Community Response Unit (UCRU)

The UCRU section has four main pillars that substantiate the majority of its work. These responsibilities include Youth and Young Adults, Mental Health, The Downtown core, and the Katzie First Nation. Visibility in the community and building partnerships through community events is a key element the sections mandate.

Crime Prevention & Volunteer Services

The Crime Prevention Unit recruits and motivates volunteers and implements a variety of crime prevention programs. Examples include Block Watch, Crime Free Multi-Housing, Speed Watch and the Auxiliary Constable Program. Utilizing volunteers, these programs contribute to an engaged and safer community.



Victim Services

Victim Services provides support, information and referrals to individuals who have been impacted by crime or trauma. Services are tailored to meet the individual needs of each client with the goal of ensuring clients are connected with appropriate resources in the community and enhancing the client's understanding of police and court procedures.

Support Services

Civilian staff provide support and assistance to the RCMP in a variety of roles ranging from customer service, clerical support, cell guard duties to other specialized services, many of which operate 7 days a week. We augment that support with approximately 105 volunteers who actively engage in RCMP Crime Prevention programs that link to police strategic focus areas.



RCMP



ROYAL CANADIAN MOUNTED POLICE

RIDGE MEADOWS RCMP - *ONE TEAM, STRONGER TOGETHER*

BIG MOMENTS

Moments & events that tell our story

DID YOU KNOW?

One of our significant investigations culminated in the seizure of 2 luxury cars, a hand gun, a semi-automatic rifle, over \$140,000 dollars in cash and more than 21,000 doses of Fentanyl was taken off our streets.

Moments In Our Community

Click on each link for more

- [PINK SHIRT DAY](#)
- [ROAMIN THE GNOME](#)
- [PULLING TOGETHER CANOE JOURNEY](#)
- [BC WILD FIRES](#)
- [MUSICAL RIDE](#)
- [CABER IN COURT](#)



Big Busts & Major Investigations

Click on each link for more



- [FIVE CHARGED WITH DRUG TRAFFICKING](#)
- [POLICE RECOVER STOLEN ITEMS, MAKING A FAMILY'S DAY](#)
- [TEAMWORK CREDITED WITH RECOVERY OF STOLEN ITEMS](#)
- [MAN CHARGED IN AGGRAVATED ASSAULT](#)
- [DRUG BUST](#)
- [BREAK & ENTER RESULTS IN ARREST](#)
- [LUXURY VEHICLES, DRUGS, CASH & GUNS SEIZED](#)
- [RIDGE MEADOWS RCMP GET THEIR MAN](#)
- [ASSAILANT CAPTURED](#)
- [GOOD OLD-FASHIONED POLICE WORK NABS SUSPECT](#)
- [DRUG LAB BUSTED](#)
- [PROLIFIC ARMED ROBBERY SUSPECT ARRESTED](#)

RCMP



ROYAL CANADIAN MOUNTED POLICE

RIDGE MEADOWS RCMP - *ONE TEAM, STRONGER TOGETHER*

ROAD SAFETY

In the job of saving lives

DID YOU KNOW?

Excessive speeding is driving 39 km/h over the posted speed limit. If you are caught you will receive a minimum \$396 fine, 3 points on your record and your vehicle will be impounded for at least 7 days. In 2017, our Traffic Unit impounded 457 vehicles due to excessive speeding.

Click on picture for more



A vehicle impounded for excessive speeding

ALEXA AWARD

In 2017 Ridge Meadows RCMP Constable Josh Brushett became a member of [Alexa's Team](#). To qualify as a member of the Team each officer has to complete at least 12 impaired driving investigations in the year. Cst Brushett excelled in getting impaired drivers off the road and received the Alexa award in recognition of his efforts. Alexa's Team was founded in 2008 following the death of four-year-old, Alexa Middelaer, who was struck and killed by an impaired driver.



Cst Brushett with his Alexa Award

RCMP

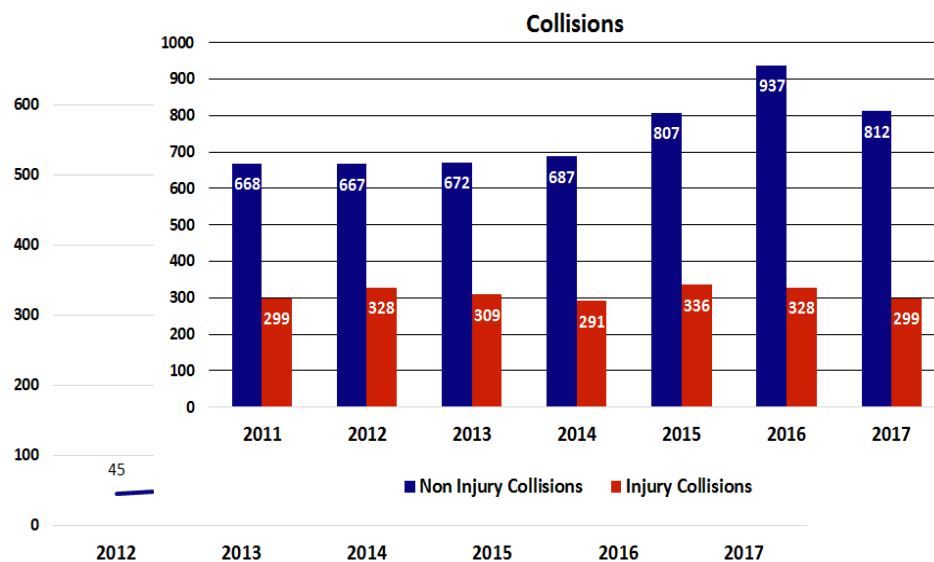


ROYAL CANADIAN MOUNTED POLICE

RIDGE MEADOWS RCMP - ONE TEAM, STRONGER TOGETHER

ROAD SAFETY

In the job of saving lives

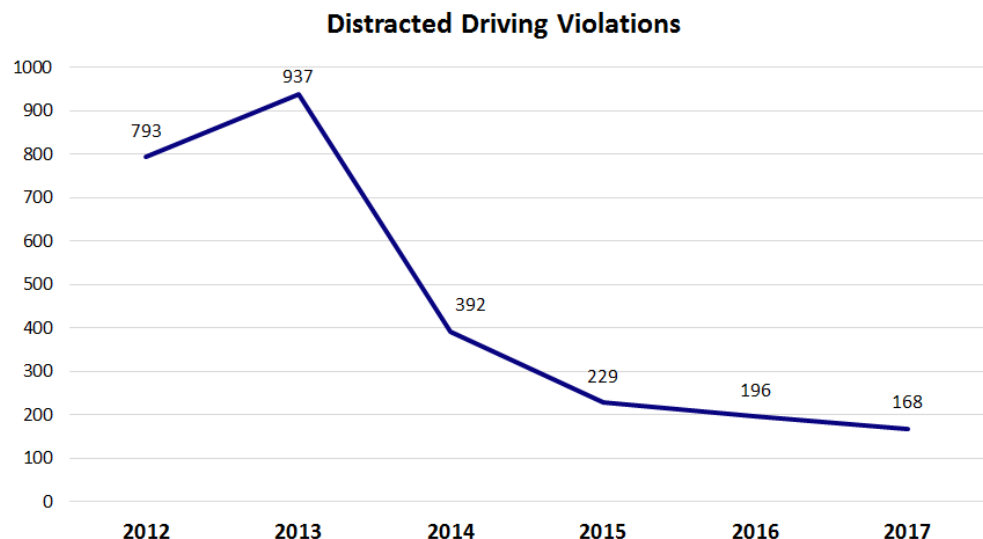


2017 COLLISIONS

In 2017 both non-injury and injury collisions decreased from 2016. Top accident locations are identified and monitored by our Traffic Unit members.

2017 DISTRACTED DRIVING VIOLATIONS

Distracted driving violations are trending downwards and have been since 2014. This is a direct result of ticketing penalties as well as a change in social norms.



RCMP



ROYAL CANADIAN MOUNTED POLICE

RIDGE MEADOWS RCMP - *ONE TEAM, STRONGER TOGETHER*

KIDS ARE COOL

Future generations are powerful

DID YOU KNOW?

In 2017 we revitalized the way we connect with our schools and assigned 2 police officers to every school in School District 42. What this means is that every school has 2 Officers who provide consistent police interaction with children and youth in our communities.



Cst Baboulas speaking with a local student

Click on each link & picture for more

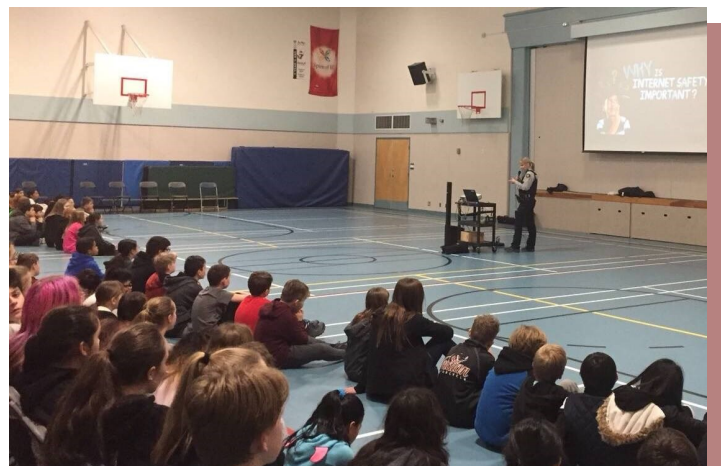
- [CANDY CANE INITIATIVE](#)
- [SCHOOL VISITS](#)
- [SNAKES IN SCHOOL](#)



Cst Van Delft playing soccer



Cst's Brushett & Irwin at a local school presentation



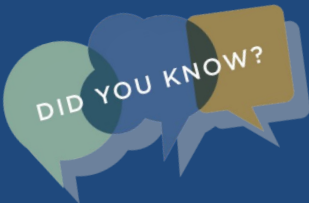
Cst Hillis presents at a school assembly

RCMP

ROYAL CANADIAN MOUNTED POLICE



RIDGE MEADOWS RCMP - *ONE TEAM, STRONGER TOGETHER*



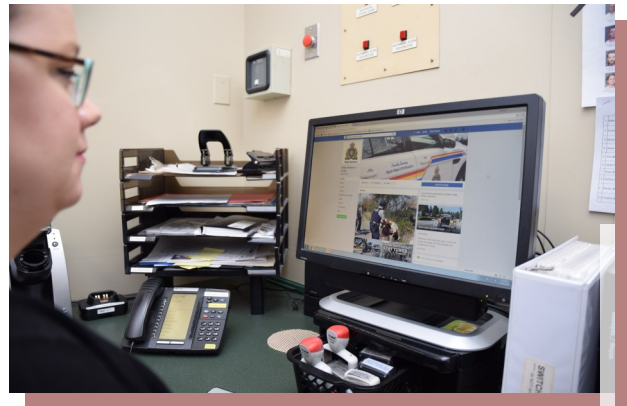
MODERN CONNECTIONS

Getting with the times & telling our story

In 2017 we redesigned our website to have a modern look making it easier to find information. We also had over 122,000 Social Media engagements through Facebook and Twitter. Check out our 'Pink Shirt Day' and 'Logan Lay Chief for a Day' videos for inspiration.

Click on each link & picture for more

- [PINK SHIRT DAY VIDEO](#)
- [LOGAN LAY CHIEF FOR A DAY VIDEO](#)
- [WEBSITE REDESIGN](#)
- [FROM THE DESK SERIES](#)
- [TWITTER](#)
- [FACEBOOK](#)



City staff managing our Facebook page



Follow our Twitter feed for the latest updates

RCMP



ROYAL CANADIAN MOUNTED POLICE

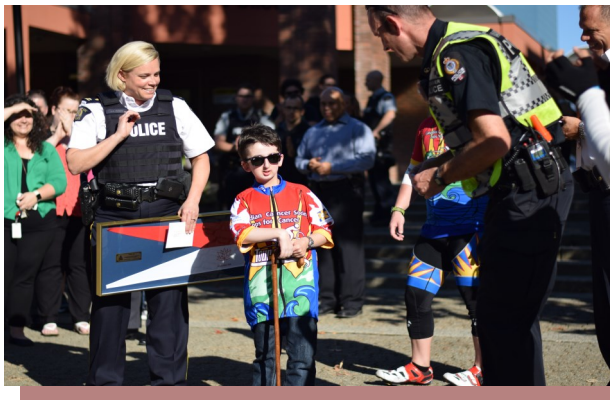
RIDGE MEADOWS RCMP - *ONE TEAM, STRONGER TOGETHER*

GIVING BACK

Community events & fundraising

DID YOU KNOW?

Throughout the year our team is engaged and committed to helping others in our communities. In 2017 we raised more than \$35,000 to directly support local charities.



Cops for Cancer

Click on each link & picture for more

- [COPS FOR CANCER](#)
- [LAW ENFORCEMENT TORCH RUN](#)
- [McHAPPY DAY](#)
- [LOGAN LAY CHIEF FOR A DAY](#)
- [TIP-A-COP](#)



Logan Lay Chief for a Day

RCMP



ROYAL CANADIAN MOUNTED POLICE

RIDGE MEADOWS RCMP - ONE TEAM, STRONGER TOGETHER

GIVING BACK

Click on each picture for more



McHappy Day



Red Robin Tip-a-Cop event



Law Enforcement Torch Run

RCMP



ROYAL CANADIAN MOUNTED POLICE

RIDGE MEADOWS RCMP - *ONE TEAM, STRONGER TOGETHER*

DID YOU KNOW?

GOOD WORK

Police work that does not go unnoticed

Police work is always performed in the spirit of helping others without expectation of recognition. In 2017 we humbly received several awards for the work we do including community and Provincial accolades. We are sincerely grateful for these tokens of appreciation.

Click on each link & picture for more

- [BC POLICE HONOURS AWARD](#)
- [ST. JOHN LIFE SAVING AWARD](#)
- [ALEXIS TEAM AWARD](#)
- [GOLDEN WHISTLE AWARD](#)



BC Police Honours Award Recipients



St. John Life Saving Award Recipients

RCMP

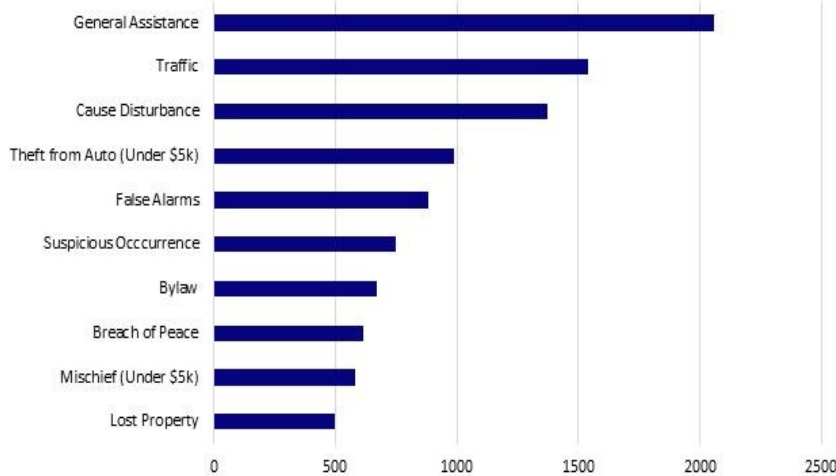
ROYAL CANADIAN MOUNTED POLICE

RIDGE MEADOWS RCMP - *ONE TEAM, STRONGER TOGETHER*

BY THE NUMBERS What went up, What went down

MAPLE RIDGE

2017 Top 10 Service Calls



2017 Police Budget

For policing costs in Maple Ridge please [click on this link](#)

[BUDGET INFO](#)

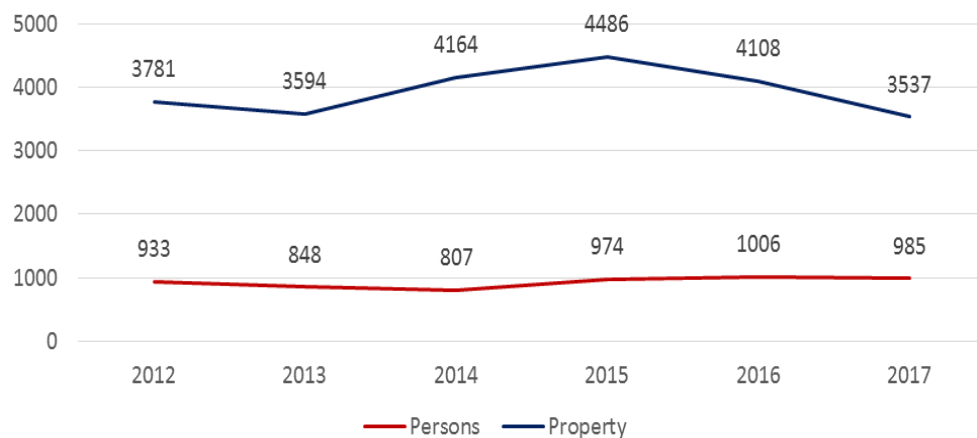
2017 Quarterly Reports

For Crime stats, quarterly reports and an interactive crime map [click on these links](#)

[QUARTERLY REPORTS](#)

[CRIME MAP](#)

Yearly Persons & Property Crimes Comparison



RCMP

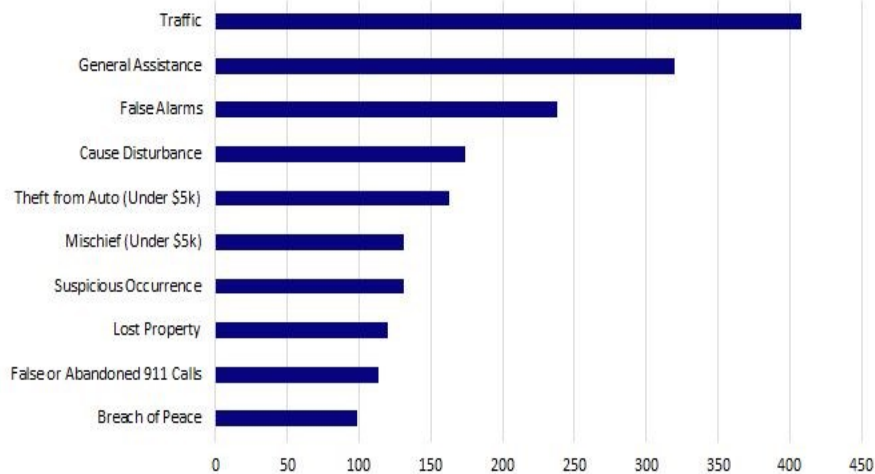
ROYAL CANADIAN MOUNTED POLICE

RIDGE MEADOWS RCMP - ONE TEAM, STRONGER TOGETHER

BY THE NUMBERS What went up, What went down

PITT MEADOWS

2017 Top 10 Service Calls



2017 Police Budget

For policing costs in Pitt Meadows
[click on this link](#)

[BUDGET INFO](#)

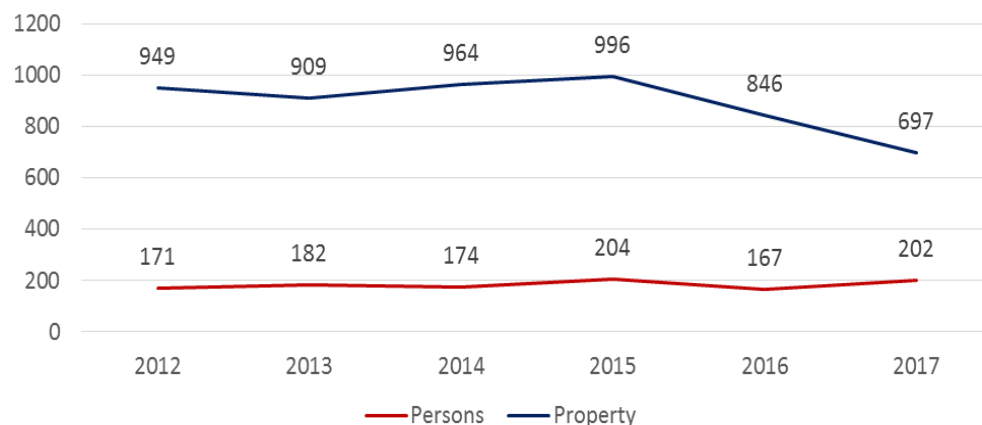
2017 Quarterly Reports

For Crime stats, quarterly reports and an interactive crime map
[click on these links](#)

[QUARTERLY REPORTS](#)

[CRIME MAP](#)

Yearly Persons & Property Crimes Comparison



RCMP



ROYAL CANADIAN MOUNTED POLICE

RIDGE MEADOWS RCMP - *ONE TEAM, STRONGER TOGETHER*

LOOKING AHEAD

Community Safety

Our service delivery model, both local and contracted, is integral to keeping our cities safe. We focus on issues that put our communities at most risk as well as those that have the most personal safety impact to our citizens.



2018 Action Highlights

- INCREASE EXCESSIVE SPEED ENFORCEMENT
- FOCUS ON TARGETED DRUG & PROPERTY ENFORCEMENT
- INCREASE VISIBILITY

Effective & Efficient Performance

It is our responsibility to emphasize getting the most from our resources, processes and policies. We commit to refine and seek business improvements and best practices to continue improving our return on investment both for now and in the future.

2018 Action Highlights

- MANDATORY & FORMALIZED OFFICER TRAINING
- IMPLEMENTATION OF NEW CRIME PREVENTION AND VOLUNTEER MODEL
- PLAN FOR FACILITY GROWTH



Communications & Public Relations

We commit to engage our citizens with relevant and interesting information, providing insight into police issues and policing in general, as well as sharing knowledge and education.



2018 Action Highlights

- INCREASE ONLINE PRESENCE INCLUDING ENHANCED USE OF SOCIAL MEDIA
- FURTHER PUBLISHING OF OFFICER OP-ED PIECES
- ENHANCE CRIME MAP & VISUAL TOOLS