

City of Maple Ridge

***ACTIVE TRANSPORTATION ADVISORY COMMITTEE
AGENDA***

*July 25, 7:00 pm
Blaney Room, Maple Ridge City Hall*

1. **CALL TO ORDER**
2. **APPROVAL OF THE AGENDA**
3. **ADOPTION OF MINUTES – March 28, 2018**
4. **NEW AND UNFINISHED BUSINESS**
 - 4.1. **2018 Chair and Vice Chair Elections**

Notes: The floor will be open for nominations;
It is possible for the positions to be voted by acclamation;
The Chair will take control of running the meeting immediately after the election concludes.
 - 4.2. **Bicycles on sidewalks – 224 Street from North Avenue to 122 Avenue**

Review of Council discussion regarding extending the area where bicycles are not permitted on sidewalks. Also, consideration of forbidding not only bicycles but roller skates, skateboards or other means of transportation.
 - 4.3. **Speed limit consideration on Dewdney Trunk Road from 222 Street to 227 Street**
 - 4.4. **2018 ATAC Work Plan**
 - 4.5. **Communities on the Move –Request for Endorsement**
5. **CORRESPONDENCE**
6. **QUESTION PERIOD**
7. **ROUNDTABLE**
8. **ADJOURNMENT**

QUESTION PERIOD

Question Period provides the public with the opportunity to ask questions or make comments on subjects that are of concern to them. Each person will be given 2 minutes to speak. Up to ten minutes in total is allotted for Question Period.

City of Maple Ridge
ACTIVE TRANSPORTATION ADVISORY COMMITTEE
MEETING MINUTES

The Minutes of the Regular Meeting of the Active Transportation Advisory Committee, held in
Blaney Room at Maple Ridge City Hall, 11995 Haney Place, Maple Ridge, British Columbia, on
March 28, 2018 at 7:07 pm

COMMITTEE MEMBERS PRESENT

Councillor Duncan	Council Liaison
Paul Yeoman, Chair	Member at Large
Kino Roy, Vice-Chair	Member at Large, Youth Representative
Dave Rush	Cycling Representative
Franklin Salguero	Member at Large
Ineke Boekhorst	Downtown Maple Ridge Business Improvement Association
Kim McLennan	Municipal Advisory Committee on Accessibility and Inclusiveness Representative
Susan Carr	School District No. 42

STAFF MEMBERS PRESENT

David Pollock	Municipal Engineer / Staff Liaison
Amanda Allen	Committee Clerk

ABSENT

Cpl. Steven Martin	Ridge Meadows RCMP – Traffic Services
Wayne Stevens	Seniors Community Representative
Bijan Naghipour	Member at Large

1. ***CALL TO ORDER***

2. ***APPROVAL OF THE AGENDA***

R/2018-001

It was moved and seconded

That the agenda for the March 28, 2018 Active Transportation Advisory Committee be
approved as circulated

CARRIED

3. ***ADOPTION OF MINUTES***

R/2018-002

It was moved and seconded

That the minutes of the Maple Ridge Active Transportation Advisory Committee meeting
dated November 29, 2017 be adopted.

CARRIED

Note: Ineke Boekhorst joined the meeting at 7:13 pm

4. ***NEW AND UNFINISHED BUSINESS***

4.1. **Maple Ridge Pitt Meadows Area Transport Plan – Public Advisory Committee**

- Brian Soland, Senior Planner, TransLink
- Bal Purewal, Public Affairs Coordinator, TransLink

The Senior Planner and Public Affairs Coordinator gave a presentation on the Maple Ridge Pitt Meadows Area Transport Plan (ATP) and the consultation strategy for the sub-regional plan. The Senior Planner provided an overview of the TransLink mandate and the Mayors' Council 10 Year Vision. The Public Affairs Coordinator provided an outline of the consultation methods and key stakeholder engagement. Discussion was held on how best to reach the community to seek feedback for the ATP. Additional feedback or questions can be sent to mrpm@translink.ca.

Note: Councillor Duncan left the meeting at 7:33 pm and returned at 7:39 pm.

5. ***QUESTION PERIOD*** - Nil

6. ***ADJOURNMENT*** – 8:41 pm.

P. Yeoman, Chair

/aa

THE FOLLOWING DOCUMENT HAS BEEN REPRODUCED FOR CONVENIENCE ONLY and is a consolidation of the following:

1. Maple Ridge Committee Appointments – Alternates: Amending Bylaw No. 7311-2017

Individual copies of any of the above bylaws can be obtained by contacting the Clerk's Department.

THE CITY OF MAPLE RIDGE

BYLAW NO. 7201-2016

A Bylaw to establish an Active Transportation Advisory Committee

WHEREAS Council is authorized to establish an Active Transportation Advisory Committee pursuant to the Community Charter;

AND WHEREAS Council considers that it is in the public interest to establish an Active Transportation Advisory Committee to advise Council on strategic priorities, planning, policies and mobility issues relating to transportation in Maple Ridge, using the Transportation Plan as a guide;

AND WHEREAS the Committee shall work towards creating, promoting, and improving an efficient, affordable, and safe transportation network that supports a variety of transportation choices;

NOW THEREFORE, the Municipal Council of the City of Maple Ridge enacts as follows:

CITATION

1. This Bylaw shall be cited for all purposes as "Maple Ridge Active Transportation Advisory Committee Bylaw No. 7201-2016."

DEFINITIONS

2. For the purposes of this Bylaw, unless the context otherwise requires,

"Maple Ridge" means the City of Maple Ridge;

"Committee" means Active Transportation Advisory Committee established under Section 3;

COMMITTEE COMPOSITION

3. The Committee shall be comprised of the following voting members:
 - One Council liaison, one alternate Council liaison
 - One member nominated by the Municipal Advisory Committee on Accessibility Issues
 - One member nominated by School District No. 42
 - One member at large with a cycling interest appointed by Council
 - One member representing the business community appointed by Council

- One member representing the seniors' community appointed by Council
- One member nominated by the Ridge Meadows RCMP
- Three members from the community at large appointed by Council
- One member at large (aged 25 years or under) representing the youth community appointed by Council

7311-2017

- Council may choose to appoint members in a different configuration than that listed here if an applicant meeting the specific membership description cannot be found to fill a vacancy and an application is received from an alternate applicant without the specific membership description but who would be an asset to the Committee
4. The members at large shall be appointed by resolution of Council and shall serve for a term of two years commencing on January 1st and terminating two years later on December 31st. In order to stagger the terms of appointment to the Committee, two of the members-at-large will be appointed for a term of one year commencing on January 1st and terminating on December 31st of the same year. Subsequent appointments shall be for a term of two years.
 5. Council may choose to remove a member from the Committee for consecutive non-attendance at three meetings (unless previously approved by the Committee) or for any other reason Council believes warrants such removal.
 6. The Chairperson shall advise Council immediately in writing of any member who has been absent from meetings of the Committee for three consecutive meetings without prior leave of absence having been granted by the Committee. Leaves of Absence greater than three consecutive meetings may, by a majority vote of the Committee, be granted when the request for the leave of Absence is received in writing, prior to the said leave taking place.
 7. The members of the Committee shall serve without remuneration.

PROCEDURES

8. The Committee shall:
 - a) appoint one of their number to act as Chair of the Committee and another member to act as Vice-Chair of the Committee on an annual basis; and
 - b) hold quarterly meetings, with additional meetings called at the discretion of the Chair;
 - c) hold subcommittee meetings between regular committee meetings;
 - d) operate in accordance with the standard operating procedures applicable to all Maple Ridge Committees and Commissions with regard to records keeping, holding closed meetings, conflict of interest, financial management and such other practices, policies and procedures which may be established by Council from time to time.
9. The presence of a majority of voting members shall constitute a quorum.

DUTIES

10. The Committee will:
 - a) Support the promotion of public education and awareness on the benefits, necessities and safety aspects of active transportation facilities.

- b) Advise on matters related to active transportation as it relates to: active workplace travel, active commuting, active recreation, and active destination-oriented trips.
- c) Support the promotion of improved pedestrian and multi-modal path networks for all ages and ranges of mobility throughout their daily activities within the community and with connectivity to neighbouring communities.
- d) Encourage regulations and policy changes that support and strengthen multi-modal active transportation and transit.
- e) Review and consider active transportation policy in a regional context as it affects Maple Ridge, and provide options on how to advance, promote, and improve the movement of people and goods within the region.
- f) Review and make recommendations to Council with regards to active transportation initiatives proposed by other levels of government and/or agencies.

SUBCOMMITTEES

- 11. Time-duration subcommittees may be established by the Chair or Council focused on a specific purpose and be inclusive of individuals and representatives that bring an informed voice (local and external experts) to the subject matter being explored. The subcommittees will be designed to support specific bodies of work of the Committee and will report to the Committee on a regular basis.

MEDIA CONTACT

- 12. The Chairperson or other person appointed by the Committee shall be the spokesperson for the media and other public information sources.

READ a first time the 12th day of January, 2016.

READ a second time the 12th day of January, 2016.

READ a third time the 12th day of January, 2016.

ADOPTED the 26th day of January, 2016.

PRESIDING MEMBER

CORPORATE OFFICER

Active Transportation Advisory Committee

January 2016

Terms of Reference

Annual Budget:

\$2,000, any additional budget requirements to be submitted through Business Planning

Number of Meetings Per Year:

Quarterly meetings of the Committee, additional meetings may be called by the Chair
Sub-committee meetings between main meetings

Meeting Date, Time and Location:

Third Wednesday of the month, 7:00 pm in the Blaney Room

Membership:

The Committee is comprised of the following 11 members:

- One Council liaison, one alternate Council liaison
- One member from Municipal Advisory Committee on Accessibility Issues
- One member from School District No. 42
- Three members from the community-at-large
- One member at large with a cycling interest
- One member representing the business community
- One member representing the seniors' community
- One youth representative (aged 25 years or under)
- One member from Ridge Meadows RCMP

Mandate:

The Active Transportation Advisory Committee is appointed for the purpose of advising Council on strategic priorities, planning, policies and mobility issues relating to transportation in Maple Ridge, using the Transportation Plan as a guide. The Committee shall work towards creating, promoting, and improving an efficient, affordable, and safe transportation network that supports a variety of transportation choices.

About the Committee:

The Active Transportation Advisory Committee will:

- Support the promotion of public education and awareness on the benefits, necessities and safety aspects of active transportation facilities.
- Advise on matters related to active transportation as it relates to; active workplace travel, active commuting, active recreation, and active destination-oriented trips.
- Support the promotion of improved pedestrian and multi-modal path networks for all ages and ranges of mobility throughout their daily activities within the community and with connectivity to neighbouring communities.
- Encourage regulations and policy changes that support and strengthen multi-modal active transportation and transit.

- Review and consider active transportation policy in a regional context as it affects Maple Ridge, and provide options on how to advance, promote, and improve the movement of people and goods within the region.
- Review and make recommendations to Council with regards to active transportation initiatives proposed by other levels of government and/or agencies.

Quorum:

50% + 1



Your **Cycling** Connection

604.558.2002
info@bikehub.ca
bikehub.ca



March 17, 2018

To: Maple Ridge Active Transportation Advisory Committee
<clerks@mapleridge.ca>

Re: ***Communities on the Move;***
request for endorsement

Dear Active Transportation Advisory Committee members,

I'm writing to you today about *Communities on the Move*.

[Communities on the Move](#) is a vision of active, connected, complete and healthy communities across British Columbia. This vision, with its underlying goals and supporting recommendations for increased funding and supportive public policies, is an initiative of the BC Alliance for Healthy Living. It aims to support British Columbians around the province in choosing healthier modes of transportation such as transit, walking, cycling, and ride-sharing.

Please find attached as well as in the link the [Communities on the Move Declaration](#). It explains in more detail the underlying values, and that the goal is to, within ten years, make it safe, easy and enjoyable for everyone to get around through active transportation, which includes the use of wheelchairs.

Health benefits of active transportation

The British Medical Journal last year published the results of a large [study](#)¹ that showed overwhelming evidence that active transportation - especially cycling - has a significant positive impact on public health. A good summary of the study can be found [here](#)².

[Maple Ridge's Community Health Profile](#)³ shows that the health of Maple Ridge's population is worse than average in the Metro Vancouver region (especially with regard to obesity and mental health). These health outcomes correlate with the modes of transportation used: communities with higher rates of active transportation tend to have on average better health outcomes.

¹ Association between active commuting and incident cardiovascular disease, cancer, and mortality: prospective cohort study, Carlos A Celis-Morales et al, Institute of Cardiovascular and Medical Sciences, University of Glasgow

² PubMed Health article: Cycling commuters have lower rates of heart disease and cancer

³ www.myhealthmycommunity.org

Equitable transportation for all

A strong commitment to equitable transportation for all benefits certain segments of the population that face barriers to physical activity, such as Aboriginal peoples, new immigrants, people with disabilities, and those with low incomes and low levels of education. For many within these groups, the availability of low cost transportation options can also mean the difference between being employed or unemployed.

Vision Zero

Safer roads and improved options for active transportation will help us work towards British Columbia's goal to have the safest roads in North America by 2020: [Moving to Vision Zero: Road Safety Strategy](#).

Climate change: reduction of greenhouse gas emissions

By 2020, the BC Government has committed to reduce its greenhouse gas emissions by 33%, compared to 2007 levels. This target has been adopted by the City of Maple Ridge. The latest available data for [Maple Ridge](#) (2012) show that our community is on track to see increasing rather than decreasing greenhouse gas emissions. While emissions from buildings and solid waste are showing a downward trend, this is not the case for emissions from transportation. About 60% of total emissions in Maple Ridge originates from transportation. A strong commitment to supporting and encouraging active transportation will help achieve the required reduction in greenhouse gas emissions.

Supporting OCP policies

The Communities on the Move Declaration aligns with various Maple Ridge OCP policies that demonstrate a commitment to place an emphasis on non-automobile travel, such as:

- 7 - 1 *Maple Ridge will encourage the development of a safe, integrated, multi-modal transportation system based on the long-term interests of the community, the economy, and the environment.*
- 7 - 4 *Maple Ridge will place an emphasis on increasing choice for non-automobile transportation modes.*
- 7 - 11 *Maple Ridge will support initiatives that reduce traffic demand and automobile trips such as:
f) encouraging transit use, bicycle use, and pedestrian travel;*
- 7 - 14 *Maple Ridge will make road safety a priority in the planning, operation and maintenance of the road network through programs and institutionalized approaches to transportation.*

Transit:

- 7 - 20 *Maple Ridge will consult and work in cooperation with the appropriate government authorities:
a) in planning for new urban areas to ensure provision of convenient routing and appropriate facilities;
b) to promote efficient transit services;
c) to provide safe pedestrian access to transit facilities;*

d) to support an increased range of bus services to meet the needs of Maple Ridge residents;

Request for recommendation to endorse

Many municipalities in B.C. already [endorse](#) Communities on the Move.

Our Maple Ridge/Pitt Meadows HUB Cycling Committee kindly requests the Active Transportation Committee to submit the following recommendation to Maple Ridge Mayor and Council:

That Maple Ridge City Council adopt two resolutions:

1. That the City of Maple Ridge endorses the Communities on the Move Declaration published on the BC Alliance for Healthy Living's website.
2. That the City of Maple Ridge adds its name to the growing list of endorsers of the Communities on the Move Declaration.

With kind regards,

Jackie Chow
HUB Cycling
Maple Ridge/Pitt Meadows Chapter

JC/IC/BB/JL/AC

Attached: *Communities on the Move Declaration*

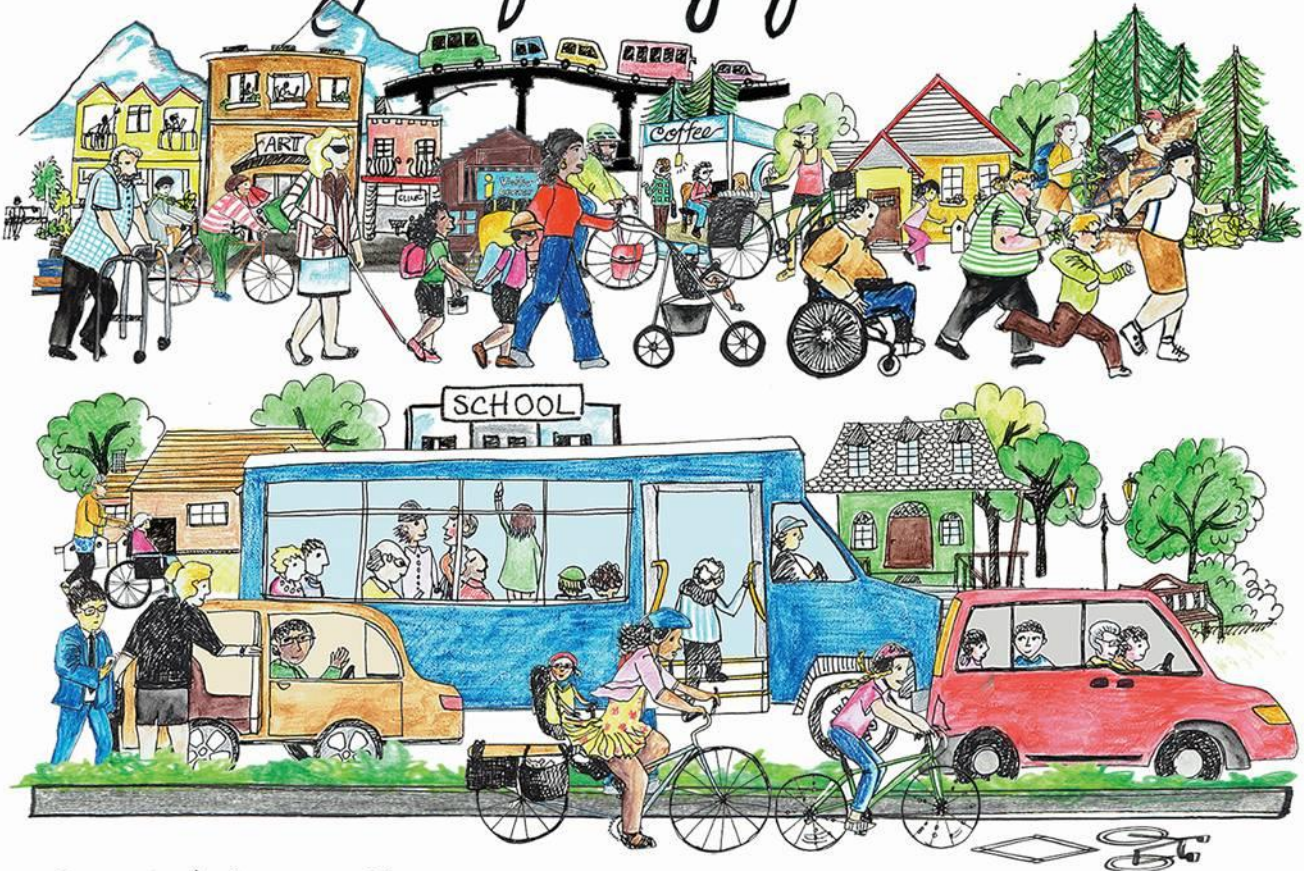
Communit[>]es
ON THE MOVE



**BC Alliance
for Healthy Living**



We envision that in **10** years
neighbourhoods across BC
will be **connected** by transportation systems that make it
easy, safe & enjoyable to get around.





***COMMUNITIES ON THE MOVE* DECLARATION: CREATING SMART, FAIR AND HEALTHY TRANSPORTATION OPTIONS FOR ALL BC COMMUNITIES**

VISION

We envision that in 10 years, across BC - in communities small and large, it will be easy, safe and enjoyable to get around, whether by walking, biking, ride-sharing, by public transit or in a wheelchair. We want to see the provincial government making progressive investments that support active, connected and healthy communities.

This vision is guided by the following VALUES:

- Healthy Communities: Safe biking and walking routes, good street design and regular transit should be available to all British Columbians so that it's easy to be active and healthy. This can also make it easier for people to be socially connected which is important for good mental health.
- Mobility for All: A range of transportation options should be available to all British Columbians – including those who live in smaller communities, and vulnerable groups such as children, older adults and those with disabilities or low incomes, as well as non-drivers – so that everyone can have access to education, employment, shopping, healthcare, recreation, cultural events and social connections.
- Clean Air and Environment: Public transit and active modes of transportation should be available to all British Columbians as these can reduce local air pollution and carbon emissions that contribute to climate change.
- Economic Opportunities and Cost Savings: Active and public transportation facilities are smart investments as they can stimulate local business and tourism in communities of all sizes. These investments can also control rising healthcare costs because regular physical activity keeps people healthier and out of the healthcare system.
- Consideration of Community Needs: All BC communities should have a range of convenient, affordable transportation options that are tailored to their context – whether urban or remote, dense or dispersed, small or suburban.
- Safety for All Road Users: The design and rules of the road should ensure that all British Columbians can arrive at their destination safely.

How do we get there?

- **A Provincial Active Transportation Strategy**

- Invest \$100M per year over the next 10 years to support the development of local cycling and walking infrastructure within a larger provincial network. Prioritize the completion of connected cycling and walking transportation networks.
- Develop an Active Transportation unit within the Ministry of Transportation and Infrastructure to provide professional planning and policy expertise at the provincial level.
- Invest in Active School Travel Planning and standardized cycling education for healthy, active children.

- **Investment in Transit**

- Invest in the full implementation of the BC Transit Strategic Plan 2030 and local governments' 'Transit Future Plans' to grow transit service and meet local needs.
- Ensure a fair share of capital funding and secure, predictable revenue tools for the full implementation of the TransLink Mayors' Council 10-Year Vision.
- Continue and expand the universal bus pass (UPASS) program to students and employees of post-secondary institutions.
- Invest in public transportation systems that serve small, rural, remote and isolated communities such as the use of school buses and bus services that feed into regional centres.

- **Commitment to Equity**

- Ensure transit accessibility for people on disability assistance by increasing the affordability of transit passes.
- Improve handyDART service to meet demand and to expand accessibility to evenings, Sundays and holidays.
- Ensure funding is allocated geographically and equitably across the province. Recognize infrastructure deficits for pedestrian, cycling and transit modes as well as limitations faced by rural, remote, geographically isolated and small communities as part of funding criteria.

- **Consideration of Regional Needs**

- Work with local governments to establish a Rural Transportation Strategy. Develop and invest in innovative community transportation systems, ride-sharing, tele-services and telecommuting options that can serve rural and remote British Columbians.
- Develop and support the implementation of Winter City Guidelines that give residents the opportunity to be active all year long. This should include operational measures such as snow-clearing for active transportation networks and improved winter road maintenance.
- Support the Metro Vancouver Mayor's Council to pursue alternative funding mechanisms.

- **Commitment to Safety**

- Support the BC Road Safety Strategy Vision Zero: work with partners to create safer streets and to eliminate fatalities and serious injuries on the roads of BC. Speed limits should be reduced and strictly enforced, including through the use of cameras and other proven safety measures.
- Prioritize safety measures for vulnerable road users such as pedestrians, cyclists and those in wheelchairs and mobility devices.